

REV.NO.	REVISION DESCRIPTION	DRAWN / DATE	REVIEWED / DATE	APPROVED / DATE
△	Issue for approval	KCH/20141029	JCS/20141029	LYH/20141029
△	Drawing arrangement	OSS/20191014	KCH/20191014	KTJ/20191014
△	Drawing updated	KCH/20250117	JCS/20250117	KTJ/20250117

**Specifications**

Acting Type	<input type="checkbox"/> Single <input type="checkbox"/> Double
Input Signal	4-20 mA DC
Impedance	Max. 500 Ohm/20 mA DC
Supply Pressure	0.14 to 0.7MPa (1.4 to 7bar)
Explosion Protection	<input type="checkbox"/> Non-Explosion proof <input type="checkbox"/> Ex ia IIC T5/T6 ...
Stroke	55 to 110'
Feedback connection type	<input type="checkbox"/> M6x34L <input type="checkbox"/> M6x63L <input type="checkbox"/> NAMUR <input type="checkbox"/> M8x34L <input type="checkbox"/> M8x63L
Operating Temp.	<input type="checkbox"/> -30 to 85 °C (-22 to 185 °F) <input type="checkbox"/> -40 to 85 °C (-40 to 185 °F) <input type="checkbox"/> -55 to 85 °C (-67 to 185 °F) : Only Non-Explosion
Ambient Temp. of Explosion proof	-40 to 60 °C(T5) / -40 to 40 °C(T6)
Linearity	± 0.5 % F.S.
Hysteresis	± 0.5 % F.S.
Sensitivity	± 0.2 % F.S.
Repeatability	± 0.3 % F.S.
Air Connection	1/4 NPT
Gauge Connection	1/8 NPT
Conduit	G 1/2
Air consumption	Below 2 LPM (Sup. = 0.14 MPa, 1.4 bar)
Flow Capacity	70 LPM (Sup. = 0.14 MPa, 1.4 bar)
Ingress Protection	IP66, Type 4X(FM), (excluding the pressure gauges)
Main Board	MPU: 16 bit Micro Controller A/D Converter: 12 bit D/A Converter: 12 bit
Output Characteristics	Linear, EQ%, Quick Open, User set
Communication	<input type="checkbox"/> None <input type="checkbox"/> HART Communication (HART 7)
Analog Output	<input type="checkbox"/> None <input type="checkbox"/> 4-20 mA (DC 9-28 V)
Housing material	Stainless steel 316
Weight	5.1 kg (11.2 lb)

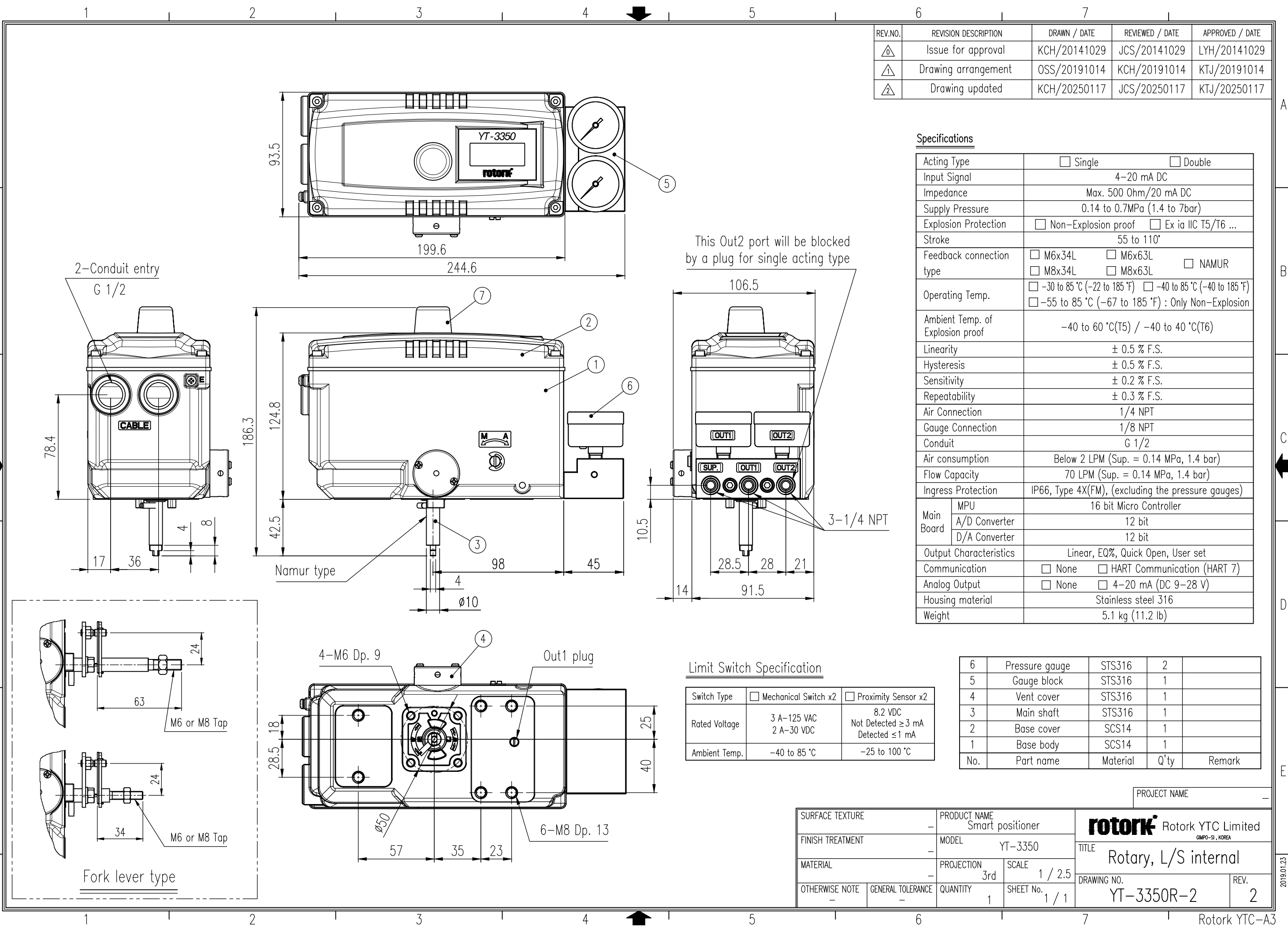
This Out2 port will be blocked by a plug for single acting type

3-1/4 NPT

**Limit Switch Specification**

Switch Type	<input type="checkbox"/> Mechanical Switch x2	<input type="checkbox"/> Proximity Sensor x2
Rated Voltage	3 A-125 VAC 2 A-30 VDC	8.2 VDC Not Detected ≥ 3 mA Detected ≤ 1 mA
Ambient Temp.	-40 to 85 °C	-25 to 100 °C

No.	Part name	Material	Q'ty	Remark
6	Pressure gauge	STS316	2	
5	Gauge block	STS316	1	
4	Vent cover	STS316	1	
3	Main shaft	STS316	1	
2	Base cover	SCS14	1	
1	Base body	SCS14	1	



SURFACE TEXTURE	PRODUCT NAME	PROJECT NAME	
-	Smart positioner	Rotork YTC Limited	
FINISH TREATMENT	MODEL	GMP0-SI, KOREA	
-	YT-3350	TITLE	
MATERIAL	PROJECTION	Rotary, L/S internal	
-	3rd	DRAWING NO.	
OTHERWISE NOTE	SCALE	YT-3350R-2	
-	1 / 2.5	REV.	
GENERAL TOLERANCE	QUANTITY	2	
-	1	SHEET No.	
-	1 / 1	2	