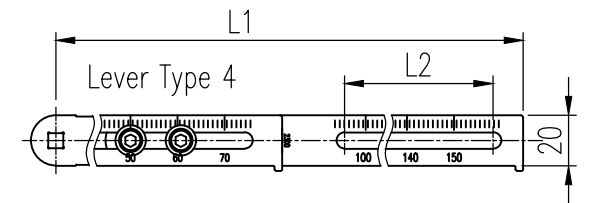
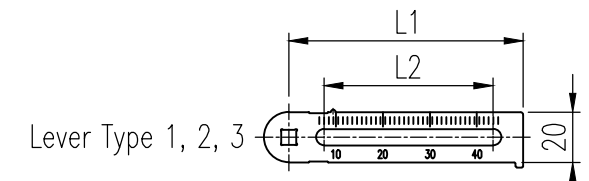
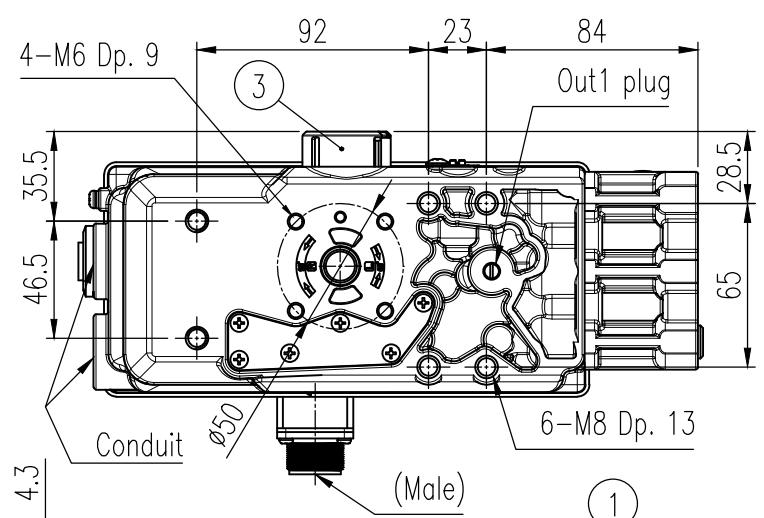
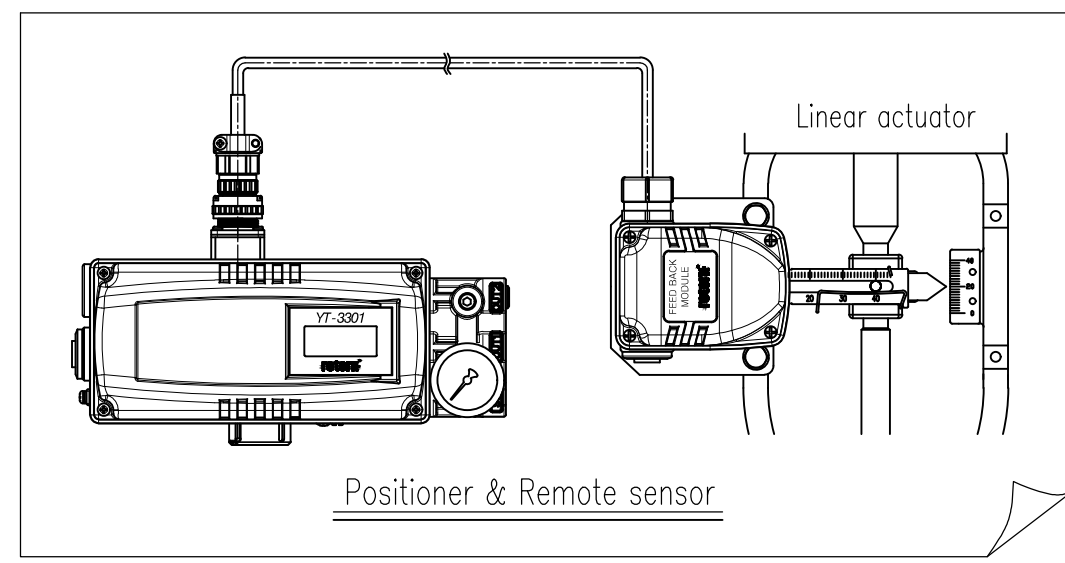


No.	Part name	Material	Q'ty	Remark
1	Base body	ALDC12	1	Positioner
2	Base cover	ALDC12	1	
3	Vent cover	PC	1	
4	Connector (Male)	AL, NBR	1	Remote sensor
5	Pressure gauge	STS304	1 or 2	
6	Base body	ALDC12	1	
7	Base cover	ALDC12	1	
9	Connector (Female)	AL, NBR	1	

REV.NO.	REVISION DESCRIPTION	DRAWN / DATE	REVIEWED / DATE	APPROVED / DATE
	Previous versions omitted			
3	To remote sensor ...	KCH/20241002	JCS/20241002	KTJ/20241002
4	Drawing updated	KCH/20250116	JCS/20250116	KTJ/20250116

Specifications

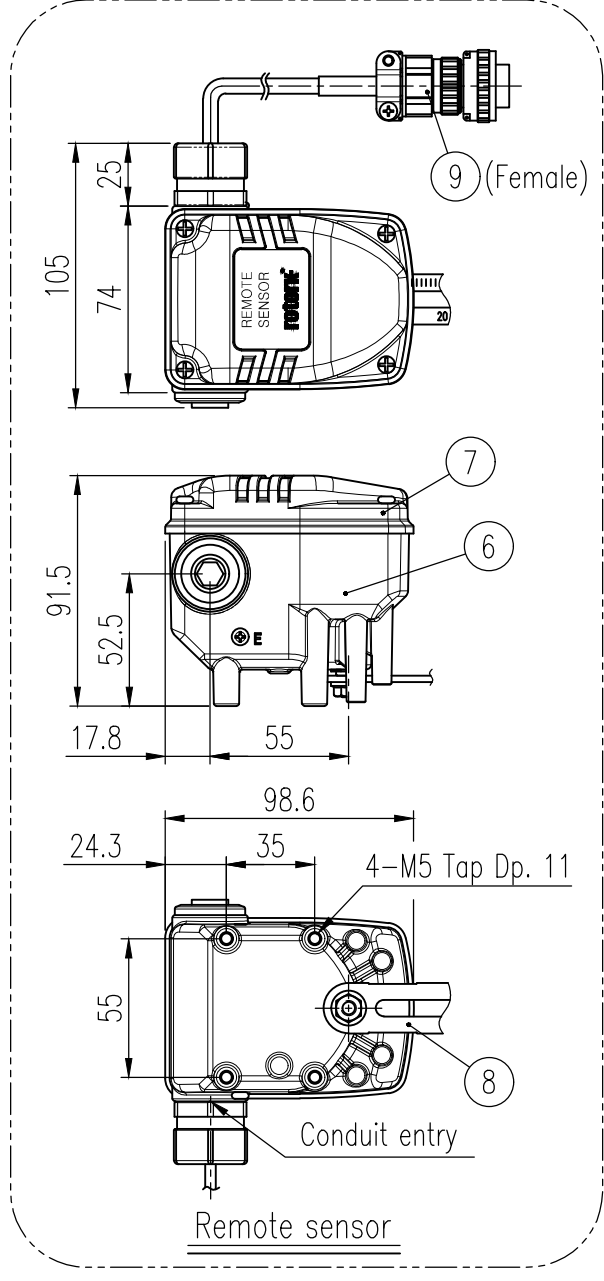
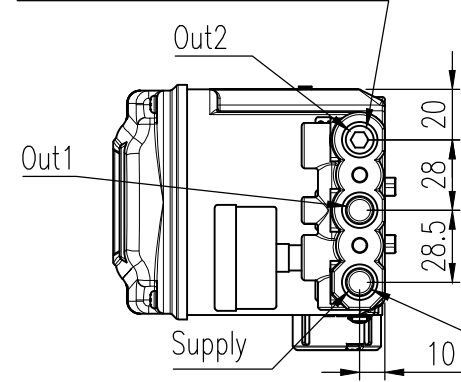
Motion Type	Linear
Housing Material	Aluminum
Acting Type	<input type="checkbox"/> Single <input type="checkbox"/> Double
Input Signal	4-20 mA DC
Minimum Current Signal	3.2 mA (Standard), 3.6 mA (Analog Output), 3.8 mA (HART or Analog Output+HART)
Noise Range	50 mVp.p
Supply Pressure	0.14 to 0.7 MPa (1.4 to 7 bar, 20 to 102 psi)
Stroke	10 to 150 mm (0.4" to 6")
Lever Type	<input type="checkbox"/> 10 to 40 mm <input type="checkbox"/> 20 to 70mm <input type="checkbox"/> 50 to 100mm <input type="checkbox"/> 100 to 150mm
Cable length	<input type="checkbox"/> 5 m <input type="checkbox"/> 10 m <input type="checkbox"/> 15 m <input type="checkbox"/> 20 m
Impedance	Max. 500 Ohm @ 20 mA DC
Conduit entry, Air Connection	<input type="checkbox"/> G 1/2, Rc 1/4 <input type="checkbox"/> G 1/2, 1/4 NPT <input type="checkbox"/> G 1/2, 1/4 NPT <input type="checkbox"/> M20x1.5P, 1/2 NPT, 1/4 NPT
Gauge Connection	1/8 NPT
Explosion Protection	<input type="checkbox"/> Non-Explosion proof <input type="checkbox"/> Ex ia IIC T5/T6 ...
Operating Temp.	Positioner
	<input type="checkbox"/> Standard : -30 to 85 °C (-22 to 185 °F)
	<input type="checkbox"/> Low temp. : -40 to 85 °C (-40 to 185 °F)
Sensor	<input type="checkbox"/> Arctic temp. : -55 to 85 °C (-67 to 185 °F) (only Non-Explosion)
Ambient Temp. of Explosion proof	-55 to 120 °C (-67 to 248 °F)
Linearity	± 0.5 % F.S.
Hysteresis	± 0.5 % F.S.
Sensitivity	± 0.2 % F.S.
Repeatability	± 0.3 % F.S.
Air consumption	Below 2 LPM (Sup. = 0.14 MPa, 1.4 bar)
Flow Capacity	70 LPM (Sup. = 0.14 MPa, 1.4 bar)
Ingress Protection	Positioner
	IP54, Type 4X(FM) (excluding the pressure gauges)
Sensor	IP66
Output Characteristics	Linear, EQ%, Quick Open, User set
Vibration	No Resonance up to 100 Hz @ 6 G
Humidity	5 to 95 % RH @ 40 °C
Main Board	MPU
	A/D Converter
	D/A Converter
Communication	<input type="checkbox"/> None <input type="checkbox"/> HART Communication (HART 7)
Analogue Output	<input type="checkbox"/> None <input type="checkbox"/> 4-20 mA (DC 9 to 28 V)
Weight	Positioner
	2.2 kg (4.9 lb)
	Sensor
0.6 kg (1.2 lb)	
Cable (5 m)	0.6 kg (1.3 lb)



Lever Type	Stroke (mm)	L1 (mm)	L2 (mm)
1	10 to 40	93.0	67.0
2	20 to 70	153.5	106.5
3	50 to 100	214.0	117.0
4	100 to 150	307.3	117.0

This plug will be replaced with a pressure gauge for double acting type.

This plug will not be attached for double acting type



**NOTE**  
1. Conduit M20x1.5P and 1/2 NPT are adapter type.

SURFACE TEXTURE		PRODUCT NAME		PROJECT NAME	
FINISH TREATMENT		Smart positioner		-	
MATERIAL		MODEL		TITLE	
OTHERWISE NOTE		PROJECTION		rotork® Rotork YTC Limited	
GENERAL TOLERANCE		SCALE		GIMPO-SI, KOREA	
-		3rd		Linear type	
-		1 / 3		DRAWING NO.	
-		SHEET No.		YTC-3301L-01	
-		1 / 1		REV.	
-		1		4	