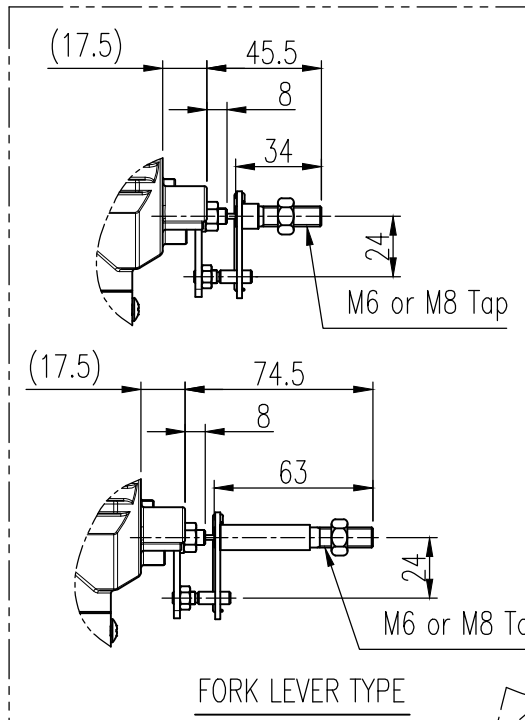
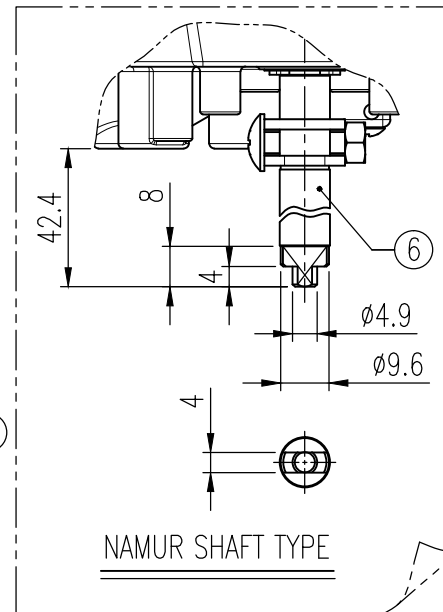
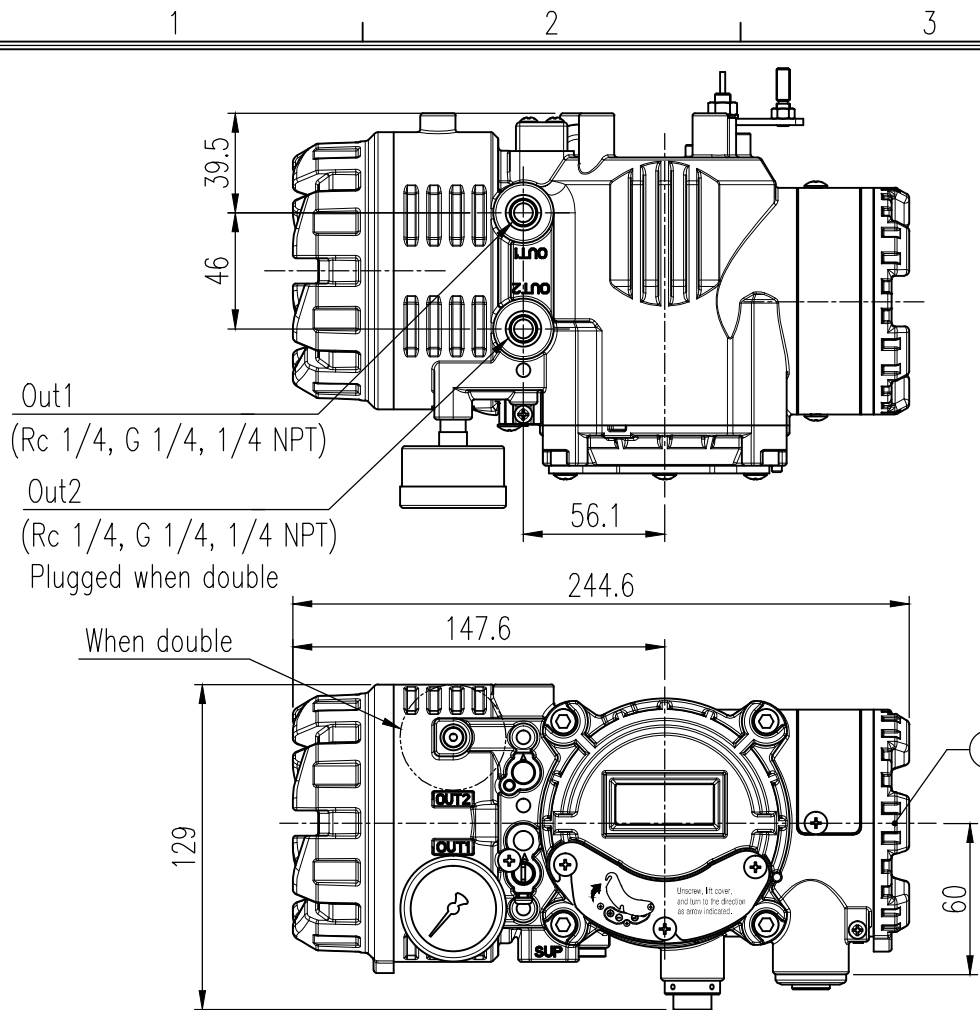


REV.NO.	REVISION DESCRIPTION	DRAWN / DATE	REVIEWED / DATE	APPROVED / DATE
	Previous versions omitted			
△	Reflect modified dimensions	OSS/20200310	JCS/20200310	KTJ/20200310
△	Drawing updated	KCH/20250116	JCS/20250116	KTJ/20250116



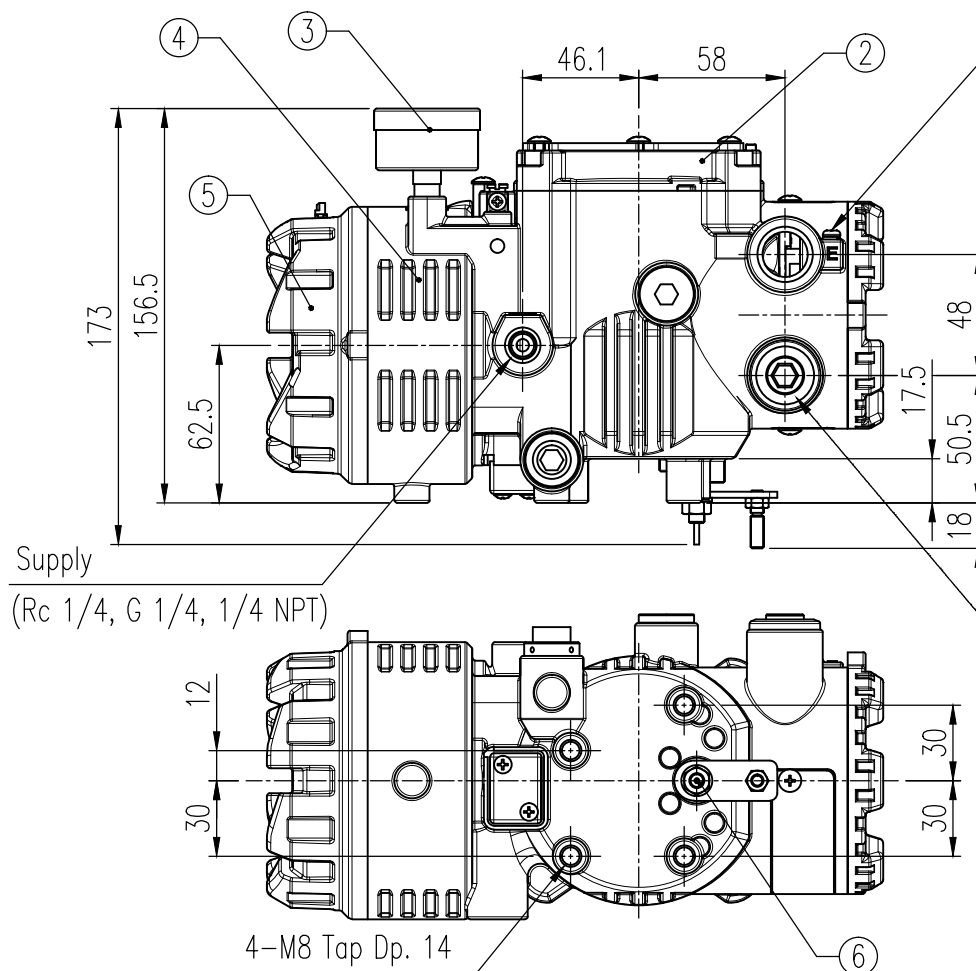
SPECIFICATIONS

Acting Type	<input type="checkbox"/> Single <input type="checkbox"/> Double
Explosion Protection	Ex db IIC T5/T6, Ex tb IIC T85°C/T100°C
Operating Temp.	-30 to 80 °C (-22 to 176 °F)
Ambient Temp. of Explosion proof	-30 to 80 °C(T5) / -30 to 70 °C(T6)
Feedback Connecting Type	<input type="checkbox"/> Fork Lever Type <input type="checkbox"/> M6 x 34L <input type="checkbox"/> M6 x 63L <input type="checkbox"/> M8 x 34L <input type="checkbox"/> M8 x 63L <input type="checkbox"/> NAMUR
Input Signal	4-20mA DC
Supply Pressure	0.14 to 0.7 MPa (1.4 to 7 bar, 20 to 102 psi)
Stroke	55 to 110°
Impedance	Max. 500 Ohm @ 20 mA DC
Conduit entry, Air Connection	<input type="checkbox"/> G 1/2, Rc 1/4 <input type="checkbox"/> G 1/2, 1/4 NPT <input type="checkbox"/> G 1/2, G 1/4 <input type="checkbox"/> M20x1.5P, 1/4 NPT <input type="checkbox"/> 1/2 NPT, 1/4 NPT
Gauge Connection	1/8 NPT
Linearity	± 0.5 % F.S.
Hysteresis	± 0.5 % F.S.
Sensitivity	± 0.2 % F.S.
Repeatability	± 0.3 % F.S.
Main Board MPU	16 bit Micro Controller
Main Board A/D Converter	12 bit
Main Board D/A Converter	12 bit
Communication	<input type="checkbox"/> None <input type="checkbox"/> HART Communication
Option	<input type="checkbox"/> None <input type="checkbox"/> Analog Output
Fail Option(Power)	<input type="checkbox"/> Fail Freeze <input type="checkbox"/> Fail Safe
Air consumption	Fail Freeze: 0.01 LPM (Sup. = 0.14 MPa) Fail Safe: 0.06 LPM (Sup. = 0.14 MPa)
Flow Capacity	Fail Freeze: 60 LPM (Sup. = 0.14 MPa) Fail Safe: 40 LPM (Sup. = 0.14 MPa)
Output Characteristics	Linear, EQ%, Quick Open, User set
Housing Material	Aluminum
Ingress Protection	IP66 (excluding the pressure gauges)
Weight	3.0 kg (6.61 lb)

- Earth (External, Internal)
1. Minimum Size Wire 1mm or 18AWG.
 2. M4x6L, 0.7P Round Head Screw
 3. M4 Spring washer

NO.	PART NAME	MATERIAL	Q'TY		REMARK
			SINGLE	DOUBLE	
1	TERMINAL COVER	ALDC12	1		
2	BASE COVER	ALDC12	1		
3	PRESSURE GAUGE	STS304	1	2	
4	BASE BODY	ALDC12	1		
5	PILOT COVER	ALDC12	1		
6	MAIN SHAFT	STS303, 304P	1		FORK LEVER, NAMUR

2-Conduit entry (G 1/2, 1/2 NPT, M20x1.5P)
 During connecting cable or conduits, it is necessary to follow flame-proof certified procedure or flame-proof certified cable gland or flexible coupling.



SURFACE TEXTURE	PRODUCT NAME	SMART POSITIONER		PROJECT NAME	-
FINISH TREATMENT	MODEL	YT-2600R			
MATERIAL	PROJECTION	SCALE	1 / 3	TITLE	
OTHERWISE NOTE	GENERAL TOLERANCE	QUANTITY	1	Rotary Positioner drawing	
		SHEET No.	1 / 1	DRAWING NO.	REV.
				YT-2600R-01	6