

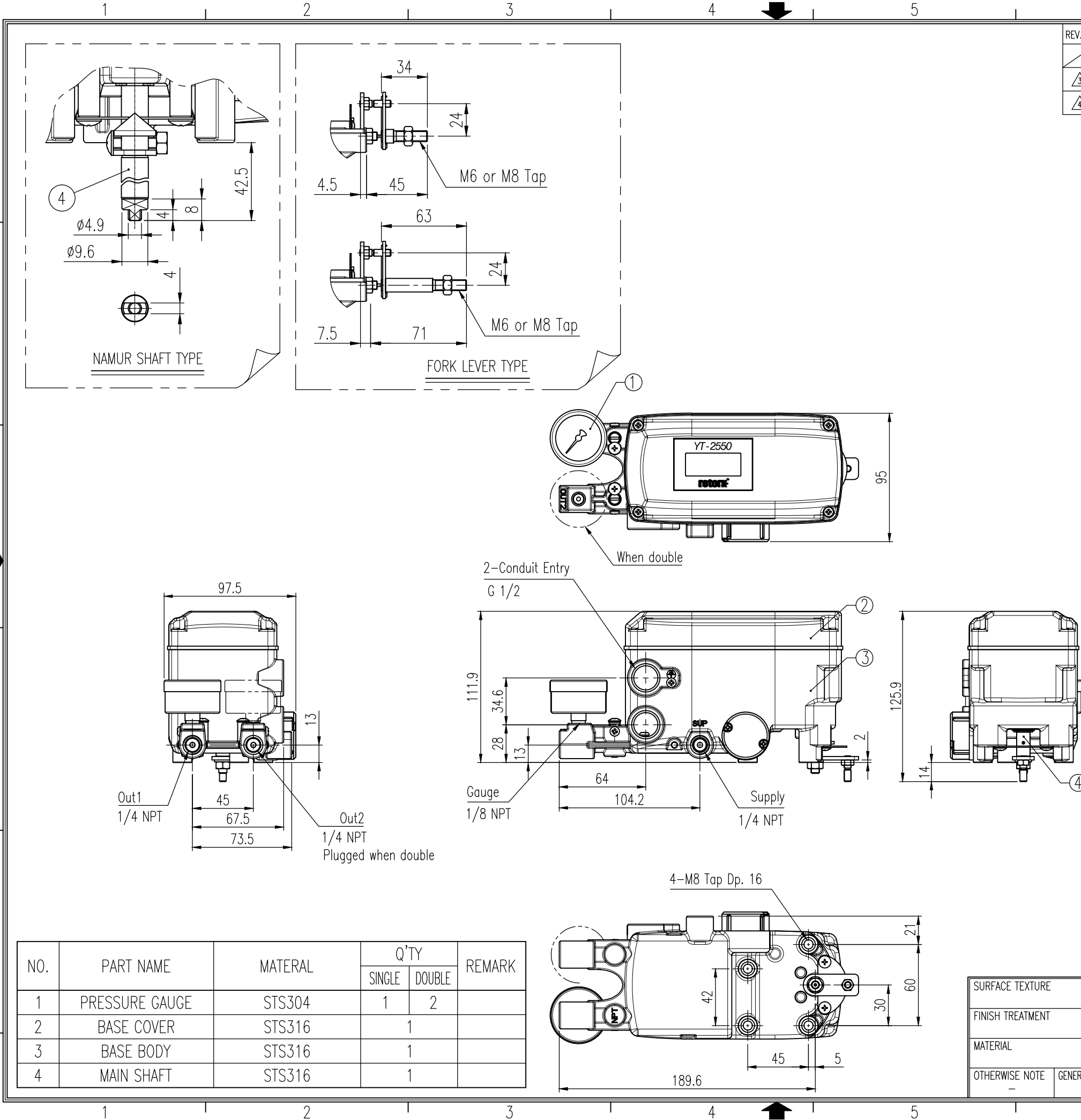
REV.NO.	REVISION DESCRIPTION	DRAWN / DATE	REVIEWED / DATE	APPROVED / DATE
	Previous versions omitted			
③	Drawing arrangement	KBJ/20190903	KCH/20190903	KTJ/20190903
④	Drawing updated	KCH/20250116	JCS/20250116	KTJ/20250116

SPECIFICATIONS

Acting Type	<input type="checkbox"/> Single	<input type="checkbox"/> Double
Explosion Protection	<input type="checkbox"/> Non-Explosion proof	<input type="checkbox"/> Ex ia IIC T5/T6 ...
Operating Temp.	-30 to 80 °C (-22 to 176 °F)	
Ambient Temp. of Explosion proof	-30 to 60 °C(T5) / -30 to 40 °C(T6)	
Feedback Connecting Type	Fork Lever Type	<input type="checkbox"/> M6 x 34L <input type="checkbox"/> M6 x 63L <input type="checkbox"/> M8 x 34L <input type="checkbox"/> M8 x 63L <input type="checkbox"/> NAMUR
Input Signal	4-20mA DC	
Supply Pressure	0.14 to 0.7 MPa (1.4 to 7 bar, 20 to 102 psi)	
Stroke	55 to 110°	
Impedance	Max. 500 Ohm @ 20 mA DC	
Conduit entry	G 1/2	
Air Connection	1/4 NPT	
Gauge Connection	1/8 NPT	
Linearity	± 0.5 % F.S.	
Hysteresis	± 0.5 % F.S.	
Sensitivity	± 0.2 % F.S.	
Repeatability	± 0.3 % F.S.	
Main Board	MPU	16 bit Micro Controller
	A/D Converter	12 bit
	D/A Converter	12 bit
Communication	<input type="checkbox"/> None	<input type="checkbox"/> HART Communication
Option	<input type="checkbox"/> None	<input type="checkbox"/> Analog Output
Fail Option(Power)	<input type="checkbox"/> Fail Freeze	<input type="checkbox"/> Fail Safe
Air consumption	Fail Freeze	0.01 LPM (Sup. = 0.14 MPa)
	Fail Safe	0.06 LPM (Sup. = 0.14 MPa)
Flow Capacity	Fail Freeze	60 LPM (Sup. = 0.14 MPa)
	Fail Safe	40 LPM (Sup. = 0.14 MPa)
Output Characteristics	Linear, EQ%, Quick Open, User set	
Housing Material	Stainless steel 316	
Ingress Protection	IP66 (excluding the pressure gauges)	
Weight	2.9kg (6.4 lb)	

PROJECT NAME

SURFACE TEXTURE	PRODUCT NAME	SMART POSITIONER		rotork Rotork YTC Limited <small>GMP0-SI, KOREA</small>
FINISH TREATMENT	MODEL	YT-2550R		
MATERIAL	PROJECTION	SCALE	TITLE	
OTHERWISE NOTE	GENERAL TOLERANCE	QUANTITY	SHEET No.	DRAWING NO.
		1	1 / 1	YT-2550R-01
				REV. 4



NO.	PART NAME	MATERIAL	Q'TY		REMARK
			SINGLE	DOUBLE	
1	PRESSURE GAUGE	STS304	1	2	
2	BASE COVER	STS316		1	
3	BASE BODY	STS316		1	
4	MAIN SHAFT	STS316		1	

2019.01.23