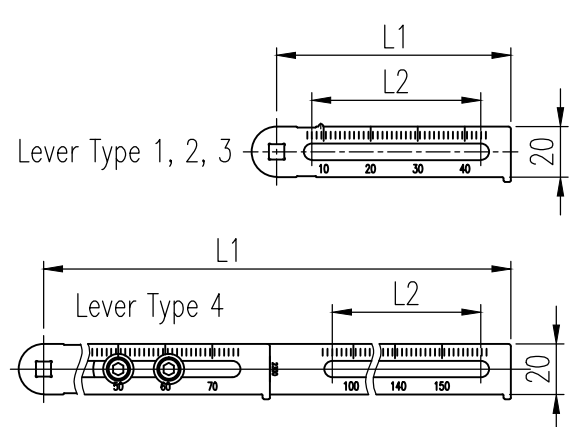


REV.NO.	REVISION DESCRIPTION	DRAWN / DATE	REVIEWED / DATE	APPROVED / DATE
	Previous versions omitted			
△3	To remote sensor ...	KCH/20241002	JCS/20241002	KTJ/20241002
△4	Drawing updated	KCH/20250204	JCS/20250204	KTJ/20250204

Specifications

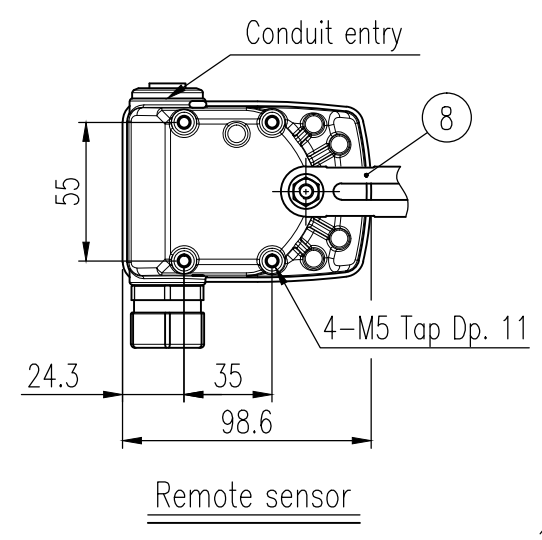
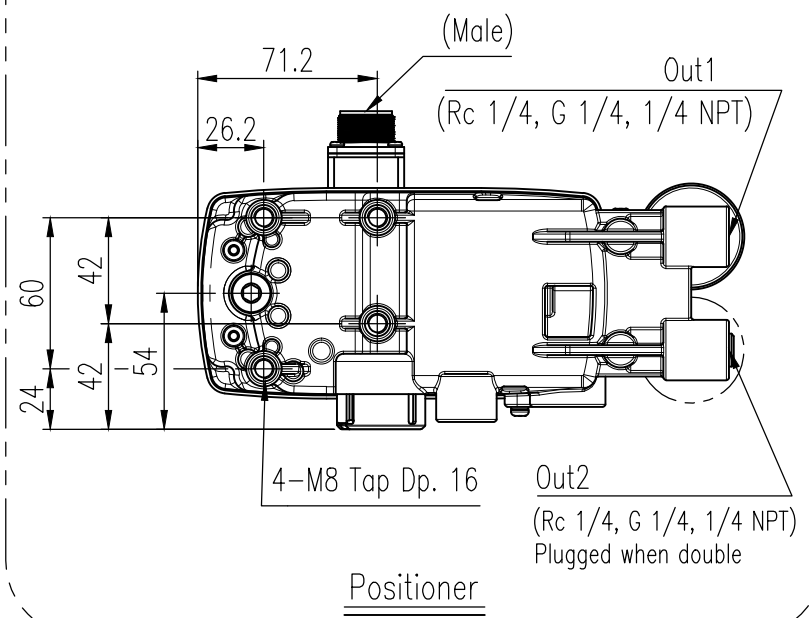
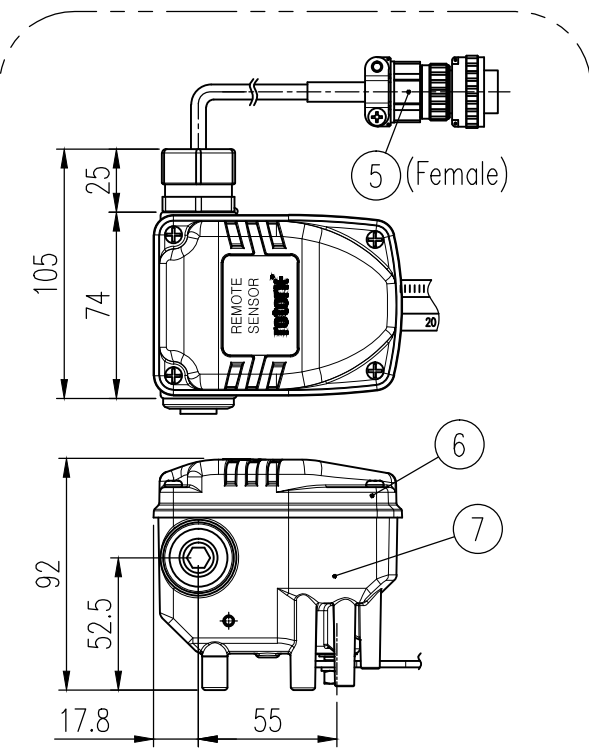
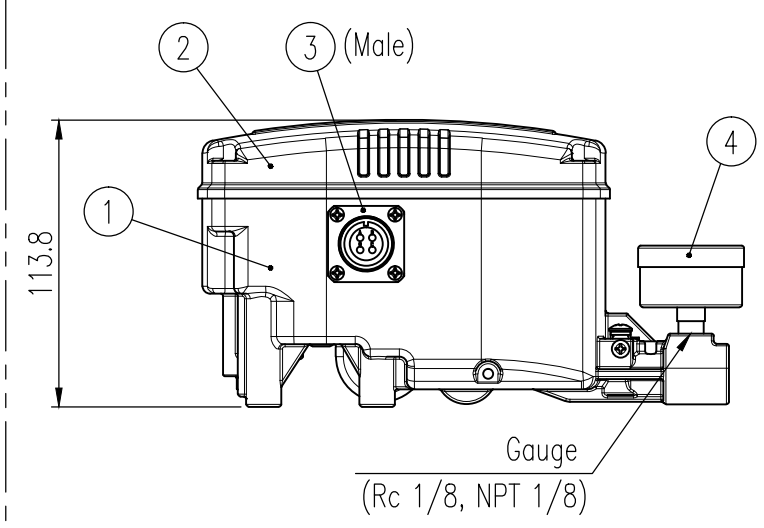
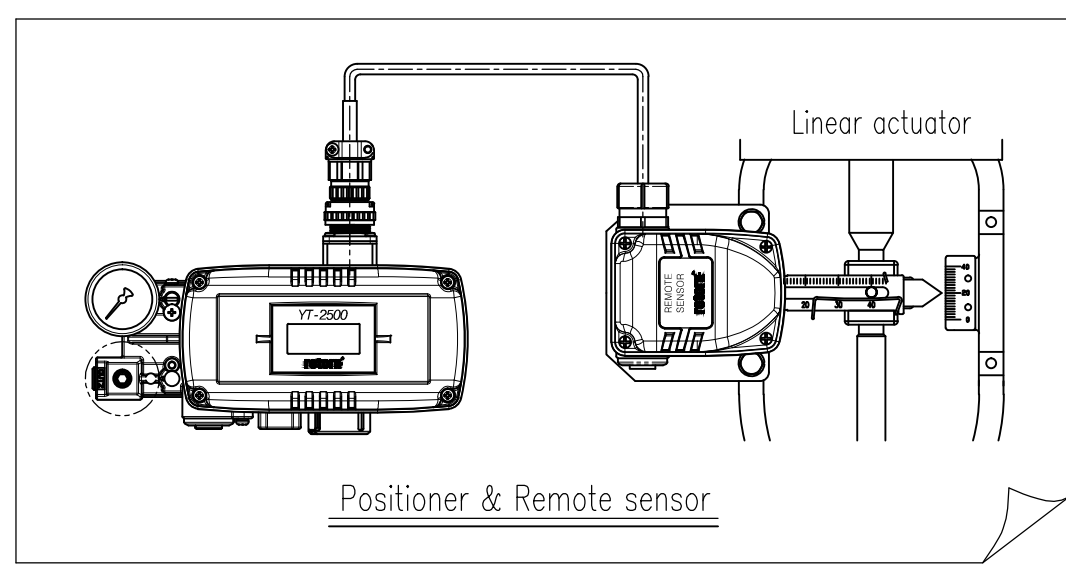
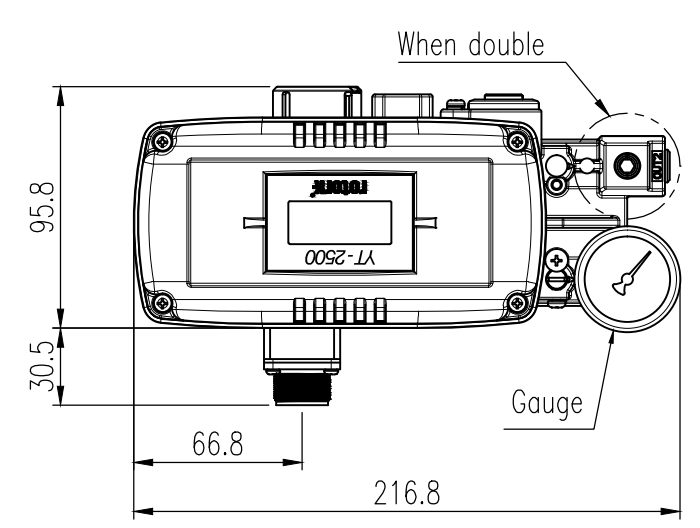
Motion Type	Linear	
Housing Material	Aluminum	
Acting Type	<input type="checkbox"/> Single <input type="checkbox"/> Double	
Input Signal	4-20 mA DC	
Minimum Current Signal	3.5 mA(Standard), 3.8 mA(HART option)	
Noise Range	50 mVp.p	
Supply Pressure	0.14 to 0.7 MPa (1.4 to 7 bar, 20 to 102 psi)	
Stroke	10 to 150 mm (0.4" to 6")	
Lever Type	<input type="checkbox"/> 10 to 40 mm <input type="checkbox"/> 20 to 70mm <input type="checkbox"/> 50 to 100mm <input type="checkbox"/> 100 to 150mm	
Impedance	Max. 500 Ohm @ 20 mA DC	
Conduit entry, Air Connection, Gauge Connection	G 1/2, G 1/2, G 1/2, M20x1.5P, 1/2 NPT, <input type="checkbox"/> Rc 1/4, <input type="checkbox"/> 1/4 NPT, <input type="checkbox"/> G 1/4, <input type="checkbox"/> 1/4 NPT, <input type="checkbox"/> 1/4 NPT, Rc 1/8 1/8 NPT 1/8 NPT 1/8 NPT 1/8 NPT	
Ingress Protection	IP66 (excluding the pressure gauges)	
Explosion Protection	<input type="checkbox"/> Non-Explosion proof <input type="checkbox"/> Ex ia IIC T5/T6 ...	
Operating Temp.	Positioner	-30 to 80 °C (-22 to 176 °F)
	Sensor	-55 to 120 °C (-67 to 248 °F)
Ambient Temp. of Explosion proof	-30 to 60 °C(T5) / -30 to 40 °C(T6)	
Linearity	± 0.5 % F.S.	
Hysteresis	± 0.5 % F.S.	
Sensitivity	± 0.2 % F.S.	
Repeatability	± 0.3 % F.S.	
Fail Option (Power)	<input type="checkbox"/> Fail Freeze <input type="checkbox"/> Fail Safe	
Flow Capacity	Fail Freeze	60 LPM (Sup. = 0.14 MPa)
	Fail Safe	40 LPM (Sup. = 0.14 MPa)
Air consumption	Fail Freeze	0.01 LPM (Sup. = 0.14 MPa)
	Fail Safe	0.06 LPM (Sup. = 0.14 MPa)
Output Characteristics	Linear, EQ%, Quick Open, User set	
Vibration	No Resonance up to 100 Hz @ 6 G	
Humidity	5 to 95 % RH @ 40 °C	
Main Board	MPU	16 bit Micro Controller
	A/D Converter	12 bit
	D/A Converter	12 bit
Communication	<input type="checkbox"/> None <input type="checkbox"/> HART Communication (HART 5)	
Analog Output	<input type="checkbox"/> None <input type="checkbox"/> 4-20 mA (DC 9 to 28 V)	
Weight	Positioner	1.6 kg (3.4 lb)
	Sensor	0.6 kg (1.2 lb)
	Cable (5 m)	0.6 kg (1.3 lb)



Lever Type	Stroke (mm)	L1 (mm)	L2 (mm)
1	10 to 40	93.0	67.0
2	20 to 70	153.5	106.5
3	50 to 100	214.0	117.0
4	100 to 150	307.3	117.0

No.	Part Name	Material	Q'ty		Remark
			Single	Double	
1	Base Body	ALDC12	1		Positioner
2	Base Cover	ALDC12	1		
3	Connector (Male)	AL, NBR	1		
4	Pressure Gauge	STS304	1	2	Remote sensor
5	Connector (Female)	AL, NBR	1		
6	Base Cover	ALDC12	1		
7	Base Body	ALDC12	1		
8	Feed Back Lever	STS304	1		

SURFACE TEXTURE	PRODUCT NAME	rotork Rotork YTC Limited GIMPO-SI, KOREA
FINISH TREATMENT	SMART POSITIONER (REMOTE)	
MATERIAL	MODEL	TITLE
OTHERWISE NOTE	PROJECTION	Linear
GENERAL TOLERANCE	SCALE	DRAWING NO.
	3rd	YTC-2501L-01
	1 / 3	REV.
	QUANTITY	1 / 1
	1	4



2019.01.23