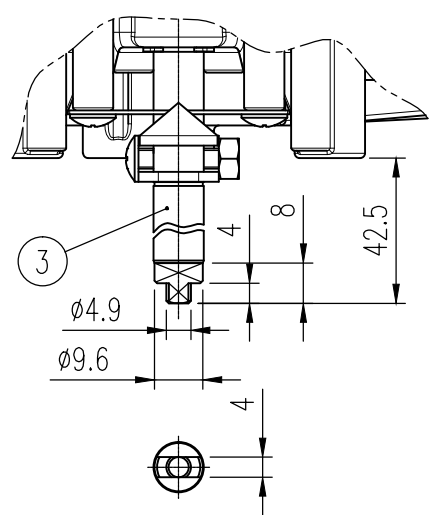


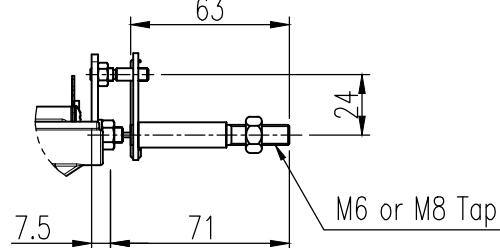
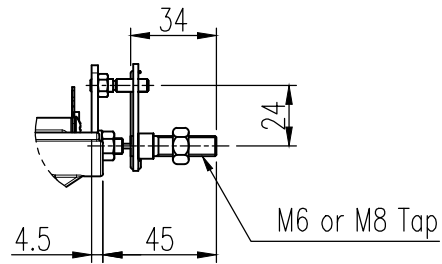
| REV.NO. | REVISION DESCRIPTION | DRAWN / DATE | REVIEWED / DATE | APPROVED / DATE |
|---------|---------------------------|--------------|-----------------|-----------------|
| | Previous versions omitted | | | |
| △ | Drawing arrangement | KBJ/20190903 | KCH/20190903 | KTJ/20190903 |
| △ | Drawing updated | KCH/20250116 | JCS/20250116 | KTJ/20250116 |

SPECIFICATIONS

| | |
|---|---|
| Acting Type | <input type="checkbox"/> Single <input type="checkbox"/> Double |
| Explosion Protection | <input type="checkbox"/> Non-Explosion proof <input type="checkbox"/> Ex ia IIC T5/T6 ... |
| Ambient Temp. of Explosion proof | -30 to 60 °C(T5) / -30 to 40 °C(T6) |
| Operating Temp. | -30 to 80 °C (-22 to 176 °F) |
| Feedback Connecting Type | <input type="checkbox"/> M6 x 34L <input type="checkbox"/> M6 x 63L <input type="checkbox"/> M8 x 34L <input type="checkbox"/> M8 x 63L <input type="checkbox"/> NAMUR |
| Input Signal | 4-20mA DC |
| Supply Pressure | 0.14 to 0.7 MPa (1.4 to 7 bar, 20 to 102 psi) |
| Stroke | 55 to 110° |
| Impedance | Max. 500 Ohm @ 20 mA DC |
| Conduit entry, Air Connection, Gauge Connection | G 1/2, G 1/2, G 1/2, M20x1.5P, 1/2 NPT, <input type="checkbox"/> Rc 1/4, <input type="checkbox"/> 1/4 NPT, <input type="checkbox"/> G 1/4, <input type="checkbox"/> 1/4 NPT, <input type="checkbox"/> 1/4 NPT, Rc 1/8 1/8 NPT 1/8 NPT 1/8 NPT 1/8 NPT |
| Linearity | ± 0.5 % F.S. |
| Hysteresis | ± 0.5 % F.S. |
| Sensitivity | ± 0.2 % F.S. |
| Repeatability | ± 0.3 % F.S. |
| Main Board | MPU 16 bit Micro Controller A/D Converter 12 bit D/A Converter 12 bit |
| Communication | <input type="checkbox"/> None <input type="checkbox"/> HART Communication |
| Option | <input type="checkbox"/> None <input type="checkbox"/> Analog Output |
| Fail Option(Power) | <input type="checkbox"/> Fail Freeze <input type="checkbox"/> Fail Safe |
| Air consumption | Fail Freeze 0.01 LPM (Sup. = 0.14 MPa) Fail Safe 0.06 LPM (Sup. = 0.14 MPa) |
| Flow Capacity | Fail Freeze 60 LPM (Sup. = 0.14 MPa) Fail Safe 40 LPM (Sup. = 0.14 MPa) |
| Output Characteristics | Linear, EQ%, Quick Open, User set |
| Housing Material | Aluminum |
| Ingress Protection | IP66 (excluding the pressure gauges) |
| Weight | 1.5 kg (3.3 lb) |



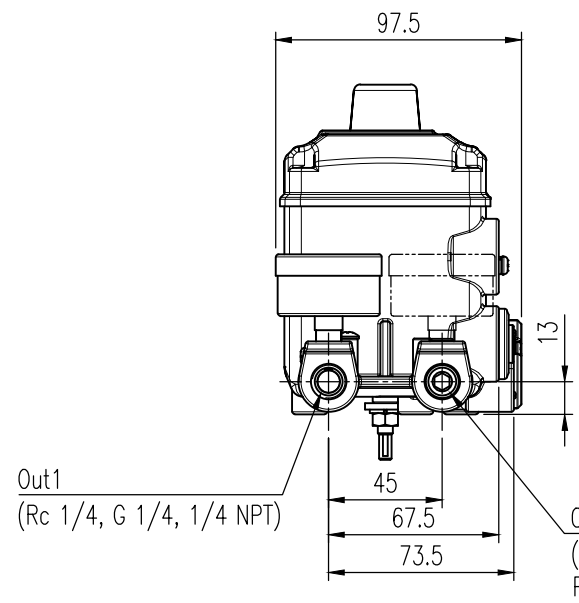
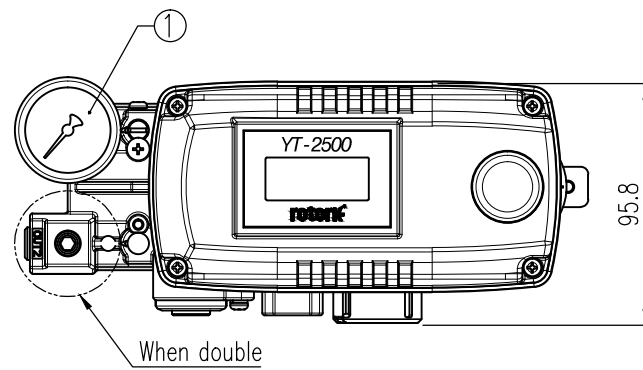
NAMUR SHAFT TYPE



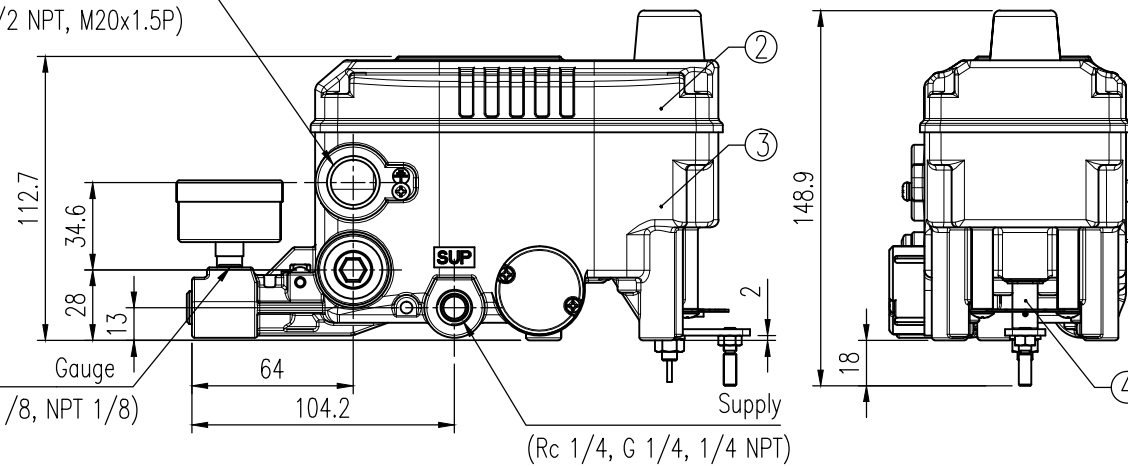
FORK LEVER TYPE

Limit switch specification

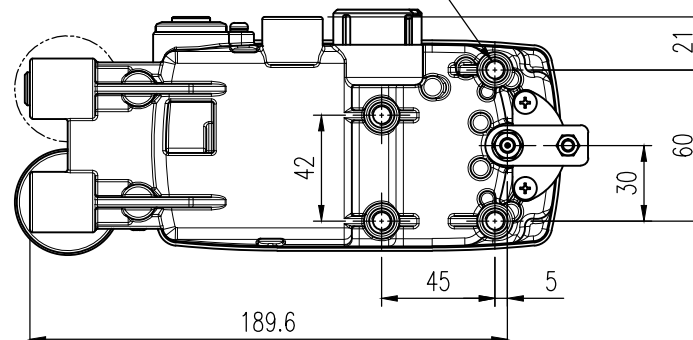
| Switch Type | Mechanical Switch x2 | Proximity Sensor x2 |
|---------------|-----------------------------|--|
| Voltage | AC 125 V 3 A DC 30 V 2 A | DC 8.2 V Not Detecting ≥ 3 mA Detecting ≤ 1 mA |
| Ambient Temp. | -40 to 85 °C | -25 to 100 °C |



2-Conduit Entry
(G 1/2, 1/2 NPT, M20x1.5P)



4-M8 Tap Dp. 16



| NO. | PART NAME | MATERIAL | Q'TY | | REMARK |
|-----|----------------|----------|--------|--------|--------|
| | | | SINGLE | DOUBLE | |
| 1 | PRESSURE GAUGE | STS304 | 1 | 2 | |
| 2 | BASE COVER | ALDC12 | | 1 | |
| 3 | BASE BODY | ALDC12 | | 1 | |
| 4 | MAIN SHAFT | STS303 | | 1 | |

| | | | |
|------------------|-------------------|------------------|-----------------|
| SURFACE TEXTURE | PRODUCT NAME | SMART POSITIONER | |
| FINISH TREATMENT | MODEL | YT-2500R | |
| MATERIAL | PROJECTION | SCALE | 1 / 3 |
| OTHERWISE NOTE | GENERAL TOLERANCE | QUANTITY | SHEET No. 1 / 1 |
| | | 1 | |

| | | | |
|---------------------------|--|----------------|--|
| PROJECT NAME | | - | |
| rotork Rotork YTC Limited | | GMP0-SI, KOREA | |
| TITLE | | | |
| Rotary, L/S internal | | | |
| DRAWING NO. | | REV. | |
| YT-2500R-02 | | 3 | |

2019.01.23