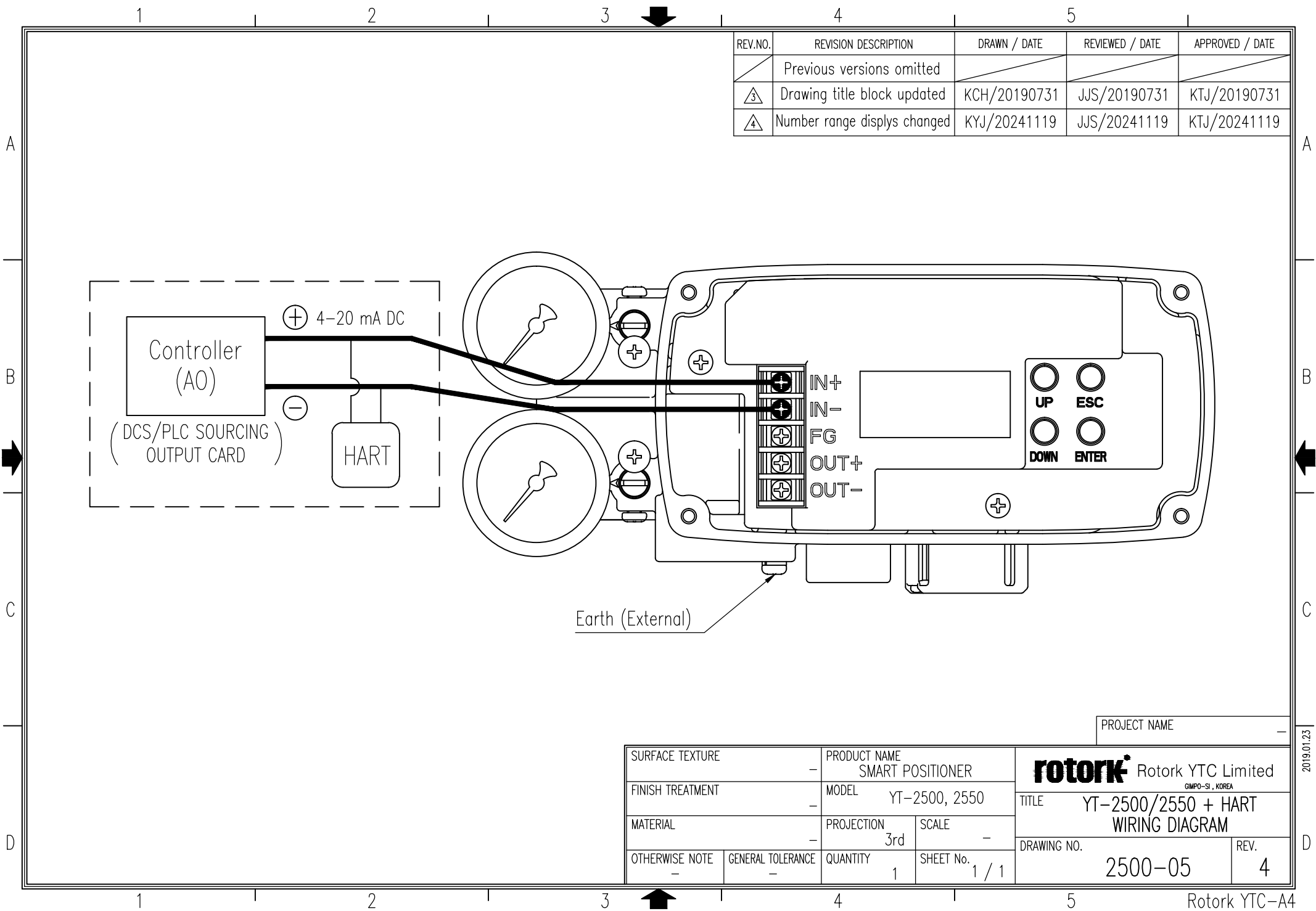



| REV.NO. | REVISION DESCRIPTION        | DRAWN / DATE | REVIEWED / DATE | APPROVED / DATE |
|---------|-----------------------------|--------------|-----------------|-----------------|
|         | Previous versions omitted   |              |                 |                 |
| 3       | Drawing title block updated | KCH/20190731 | JJS/20190731    | KTJ/20190731    |
| 4       | Number range dispys changed | KYJ/20241119 | JJS/20241119    | KTJ/20241119    |



PROJECT NAME \_\_\_\_\_

|                  |                   |          |           |                                  |            |
|------------------|-------------------|----------|-----------|----------------------------------|------------|
| SURFACE TEXTURE  |                   | -        |           | PRODUCT NAME<br>SMART POSITIONER |            |
| FINISH TREATMENT |                   | -        |           | MODEL<br>YT-2500, 2550           |            |
| MATERIAL         |                   | -        |           | PROJECTION<br>3rd                | SCALE<br>- |
| OTHERWISE NOTE   | GENERAL TOLERANCE | QUANTITY | SHEET No. | 1 / 1                            |            |
| -                | -                 | 1        | 1 / 1     |                                  |            |

|  |  |  |           |
|--|--|--|-----------|
|  Rotork YTC Limited<br>GIMPO-SI., KOREA |  | TITLE<br>YT-2500/2550 + HART<br>WIRING DIAGRAM |           |
|  |  | DRAWING NO.<br>2500-05                         | REV.<br>4 |