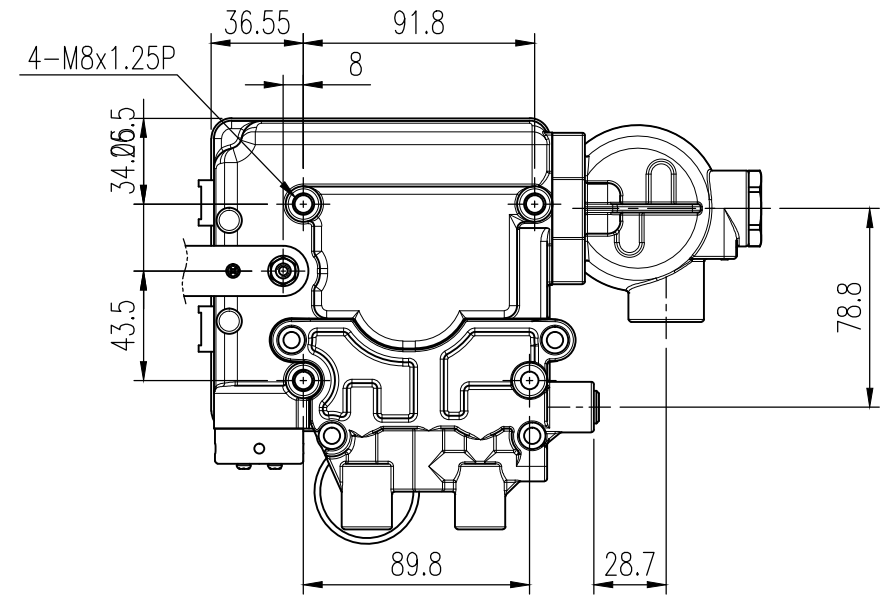
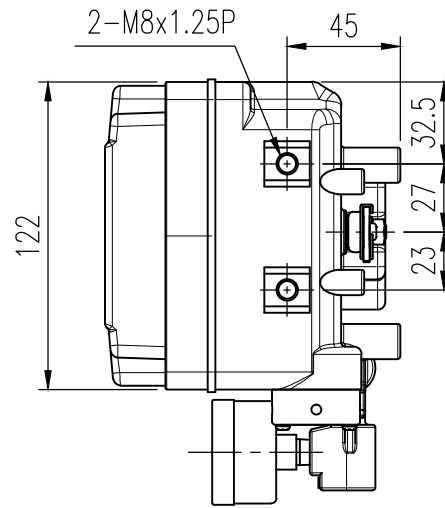
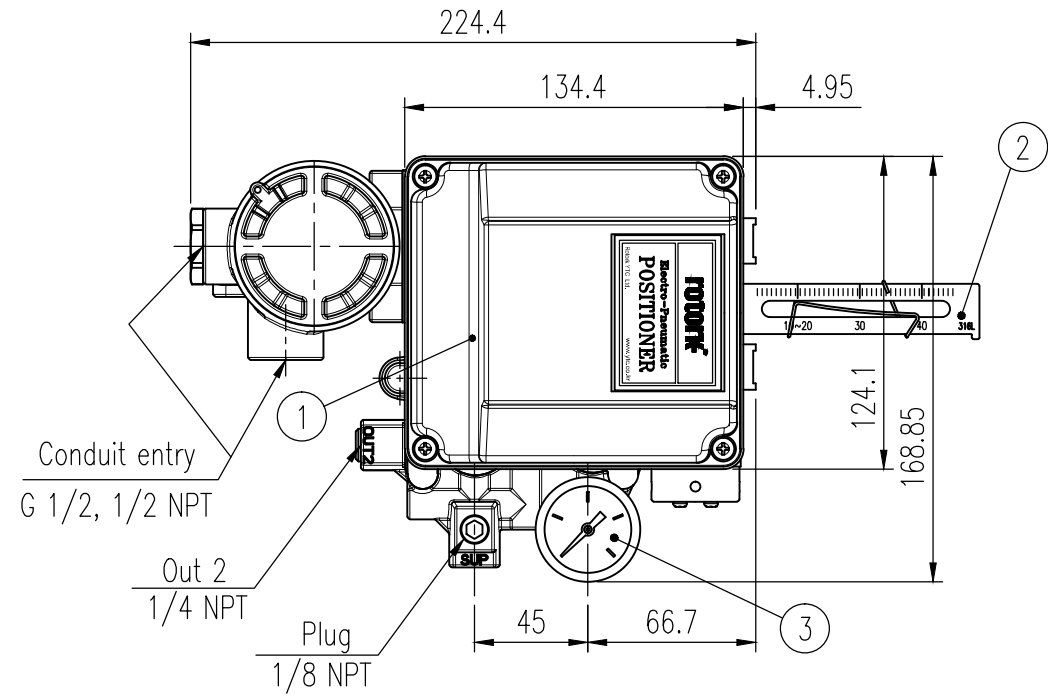


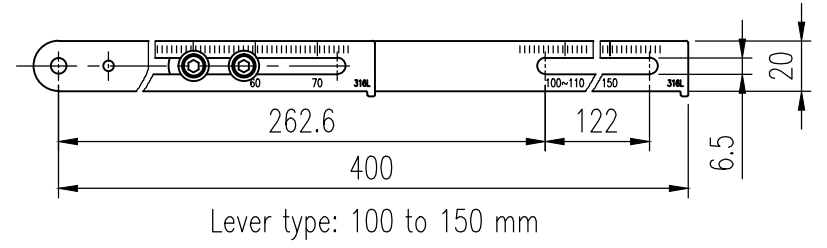
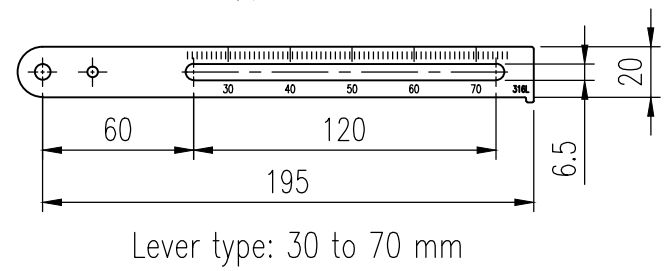
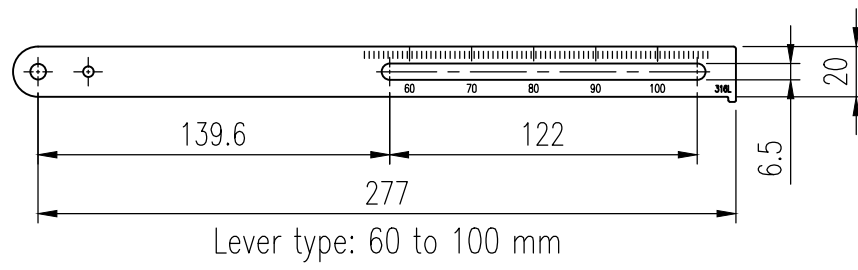
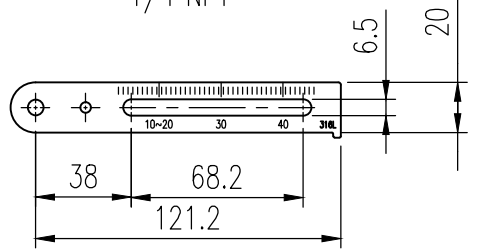
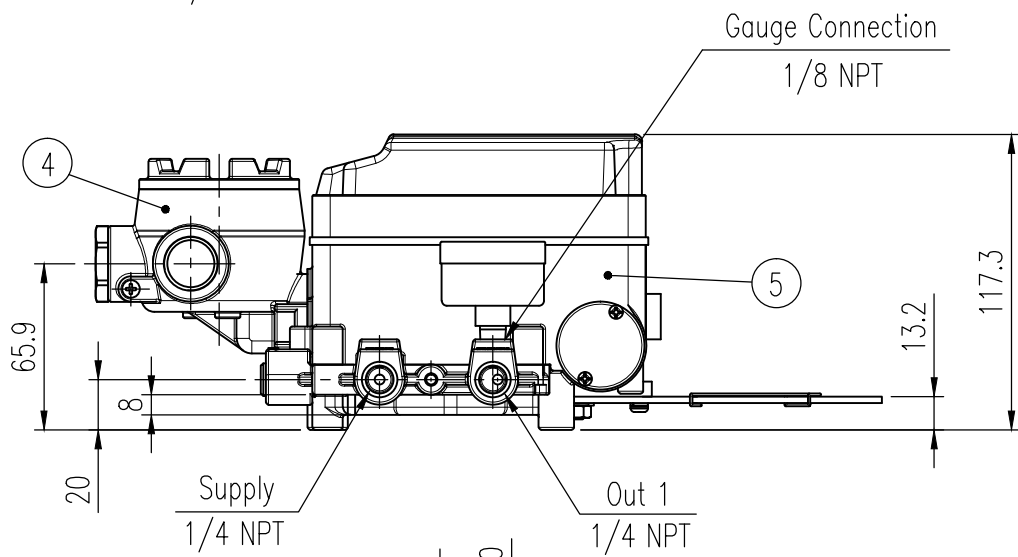
| REV.NO. | REVISION DESCRIPTION | DRAWN / DATE | REVIEWED / DATE | APPROVED / DATE |
|---------|------------------------------|--------------|-----------------|-----------------|
| | Previous versions omitted | | | |
| ③ | Company name changed | KCH/20191023 | JCS/20191023 | KTJ/20191023 |
| ④ | Gauge threads integrated ... | KCH/20250116 | JCS/20250116 | KTJ/20250116 |



Specification

| | |
|----------------------|--|
| Motion Type | Linear |
| Acting Type | <input type="checkbox"/> Single <input type="checkbox"/> Double |
| Input Signal | 4-20 mA DC |
| Impedance | Max. 250 ± 15Ω |
| Supply Pressure | 0.14 to 0.7 MPa (1.4 to 7 bar) |
| Stroke | 10 to 150 mm |
| Conduit entry, | <input type="checkbox"/> G 1/2 (N/A for CCC) <input type="checkbox"/> 1/2 NPT (only CCC) |
| Air Connection, | 1/4 NPT |
| Gauge Connection | 1/8 NPT |
| Explosion Protection | <input type="checkbox"/> Non-explosion proof <input type="checkbox"/> ATEX, IECEx, UKEX, PESO : Ex db mb IIB T5 Gb <input type="checkbox"/> KCs : Ex db mb IIB T5/T4 Gb <input type="checkbox"/> INMETRO : Ex db mb IIB T5 Gb <input type="checkbox"/> CCC, NEPSI : Ex db mb IIB T5 Gb |
| Orifice Type | <input type="checkbox"/> φ1 <input type="checkbox"/> φ2 <input type="checkbox"/> None |

| | | |
|--|---------------------------------------|--|
| Operating Temp. | Standard | <input type="checkbox"/> -20 to 70 °C (-4 to 158 °F) |
| | High | <input type="checkbox"/> -20 to 120 °C (-4 to 248 °F) |
| | Low | <input type="checkbox"/> -40 to 70 °C (-40 to 158 °F) |
| Ambient Temperature of Explosion Proof | | ATEX ... : -20 to 60 °C (-4 to 140 °F) KCs : (T5) -20 to 70 °C (-4 to 140 °F), (T4) -20 to 120 °C (-4 to 248 °F) |
| Linearity | Single | ± 1.0 % F.S. |
| | Double | ± 2.0 % F.S. |
| Hysteresis | | ± 1.0 % F.S. |
| Sensitivity | Single | ± 0.2 % F.S. |
| | Double | ± 0.5 % F.S. |
| Repeatability | | ± 0.5 % F.S. |
| Flow Capacity | | > 80 LPM (Sup. = 0.14 MPa, 1.4 bar) |
| Air Consumption | | < 2.5 LPM (Sup. = 0.14 MPa, 1.4 bar) |
| Ingress Protection | | IP66 (excluding the pressure gauges) |
| Weight | | 5.71 kg (12.6 lb) |
| Lever type | <input type="checkbox"/> 10 to 40 mm | <input type="checkbox"/> 30 to 70 mm |
| | <input type="checkbox"/> 60 to 100 mm | <input type="checkbox"/> 100 to 150 mm |
| Housing Material | | Stainless steel 316 |



| No. | Part name | Material | Q'ty | Remark |
|-----|----------------|----------------------|------|--------|
| 1 | Base cover | Stainless steel 316 | 1 | |
| 2 | Feedback lever | Stainless steel 316L | 1 | |
| 3 | Pressure gauge | Stainless steel 316 | 1 | |
| 4 | Junction box | Stainless steel 316 | 1 | |
| 5 | Base body | Stainless steel 316 | 1 | |

| | | | |
|------------------|-------------------|----------------|-----------------|
| SURFACE TEXTURE | PRODUCT NAME | E/P Positioner | |
| FINISH TREATMENT | MODEL | YT-1050L | |
| MATERIAL | PROJECTION | SCALE | 1 / 3 |
| OTHERWISE NOTE | GENERAL TOLERANCE | QUANTITY | SHEET No. 1 / 1 |
| | | 1 | |

| | | | |
|----------------------------|--|------------------------------------|--|
| PROJECT NAME | | - | |
| rotork® Rotork YTC Limited | | GIMPO-SI, KOREA | |
| TITLE | | Linear Standard Positioner drawing | |
| DRAWING NO. | | YT-1050L-01 | |
| REV. | | 4 | |