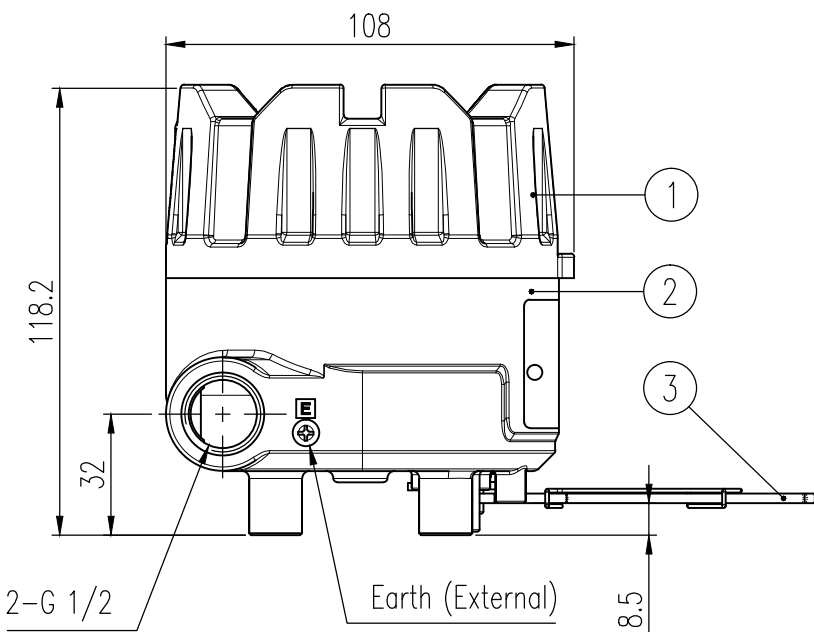
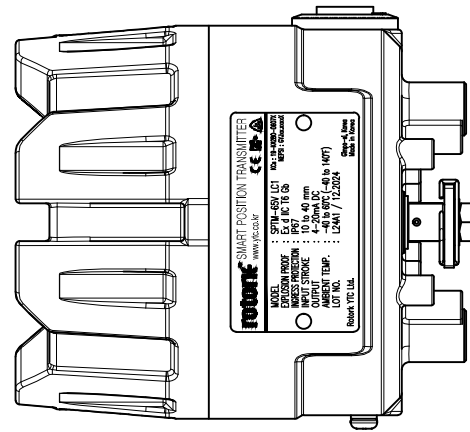
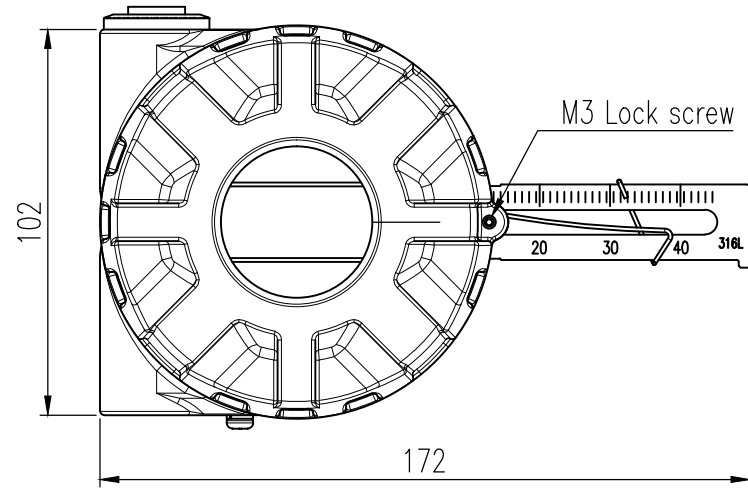
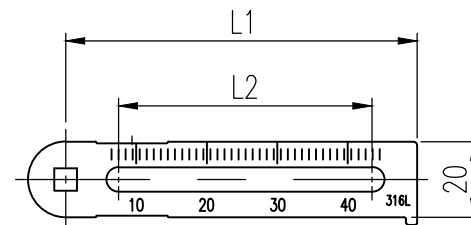


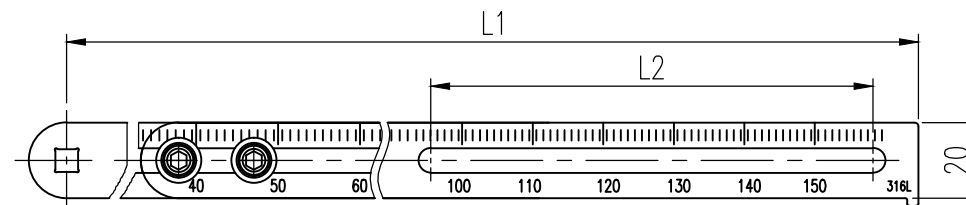
REV.NO.	REVISION DESCRIPTION	DRAWN / DATE	REVIEWED / DATE	APPROVED / DATE
△1	First issued	OSS/20141219	JCS/20141219	LYH/20141219
△2	Company name changed ...	KSH/20191007	KCH/20191007	KTJ/20191007
△3	Range display changed ...	KCH/20241220	JCS/20241220	KTJ/20241220



Lever type 1, 2, 3



Lever type 4

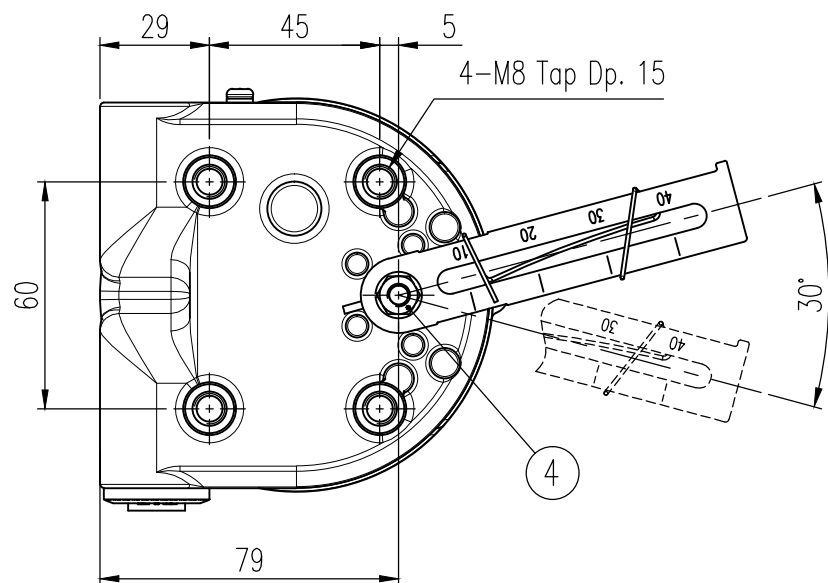


Lever type	Stroke(mm)	L1(mm)	L2(mm)
1	10 to 40	93.0	67.0
2	20 to 70	153.5	106.5
3	50 to 100	214.0	117.0
4	100 to 150	307.3	

Specifications

Connection Type	2 Wire	
Input Stroke	10 to 150 mm	
Lever Type	<input type="checkbox"/> 10 to 40 mm	<input type="checkbox"/> 20 to 70 mm
	<input type="checkbox"/> 50 to 100 mm	<input type="checkbox"/> 100 to 150 mm
Output Signal	4-20 mA DC	
External Load Resistance	$R_{ext} \leq (V_s - 9) / 20 \text{ mA}$, 750 ohms @ $V_s = 24 \text{ V}$	
Supply Voltage	9-28 V DC	
Conduit Entry	<input type="checkbox"/> G 1/2 (KCs only)	<input type="checkbox"/> 1/2 NPT (NEPSI only)
Explosion Protection	<input type="checkbox"/> KCs : Ex d IIC T6	<input type="checkbox"/> NEPSI : Ex d IIC T6 Gb
Ingress Protection	IP 67	
Ambient Temp.	Operating	-40 to 85°C (-40 to 185°F)
	Explosion Proof	KCs, NEPSI : -40 to 60 °C (-40 to 140°F)
Linearity	±1% F.S.	
Hysteresis	±0.2% F.S.	
Sensitivity	±0.2% F.S.	
Housing Material	Stainless steel 316	
Weight	2.8 kg (6.17 lb)	

No.	Part name	Material	Q'ty	Remark
1	Base cover	SCS14	1	
2	Base body	SCS14	1	
3	Feedback lever	STS316	1	
4	Main shaft	STS316	1	



PROJECT NAME

SURFACE TEXTURE	PRODUCT NAME Smart position transmitter	rotork Rotork YTC Limited GIMPO-SI, KOREA	
FINISH TREATMENT	MODEL SPTM-65VL	TITLE Linear type	
MATERIAL	PROJECTION 3rd	SCALE 1/2	DRAWING NO. SPTM-65VL-1
OTHERWISE NOTE	GENERAL TOLERANCE	QUANTITY 1	
		SHEET No. 1/1	