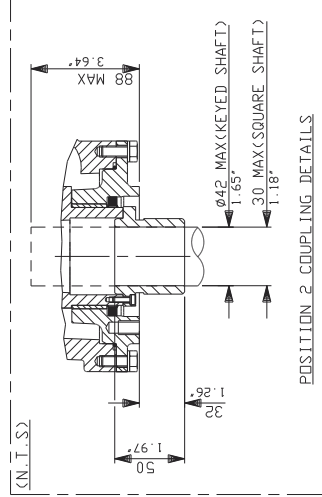
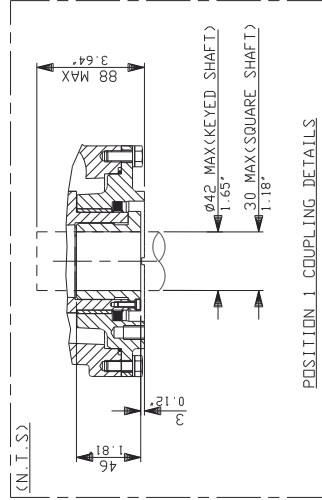
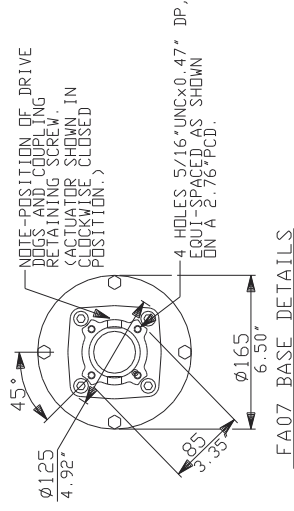
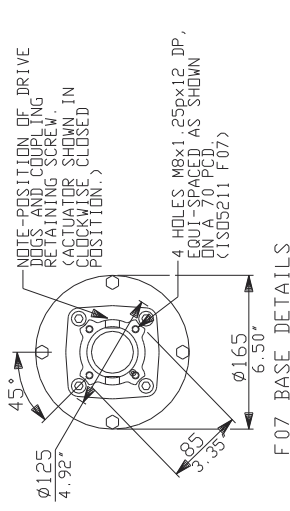
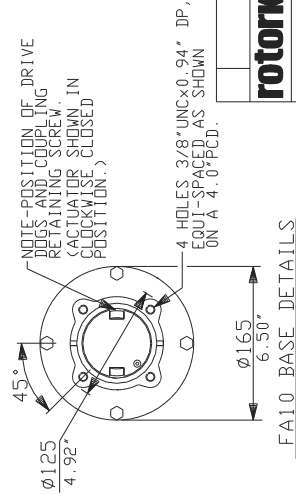
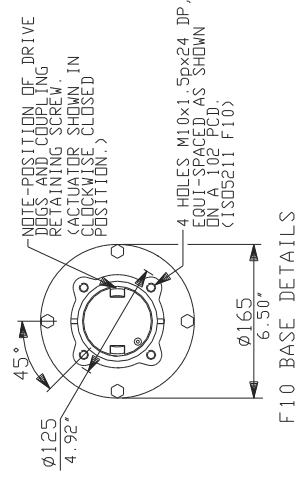
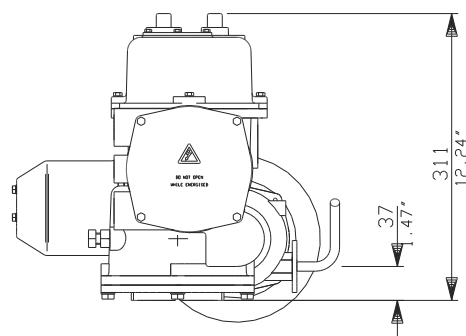
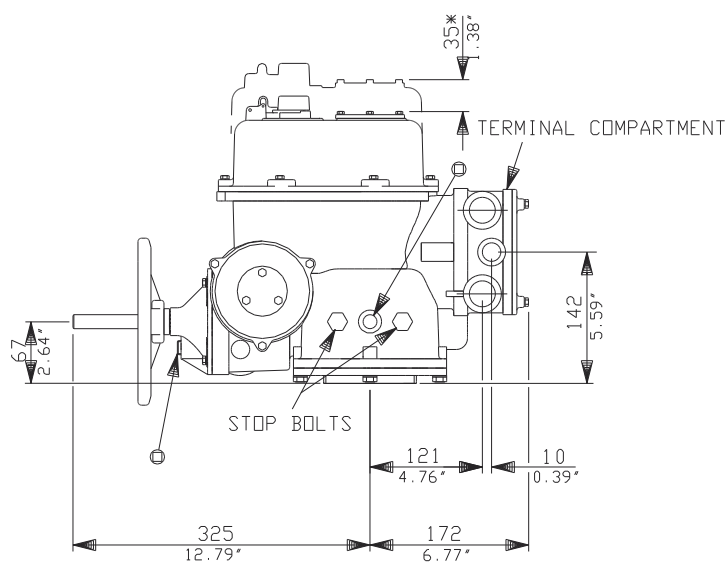
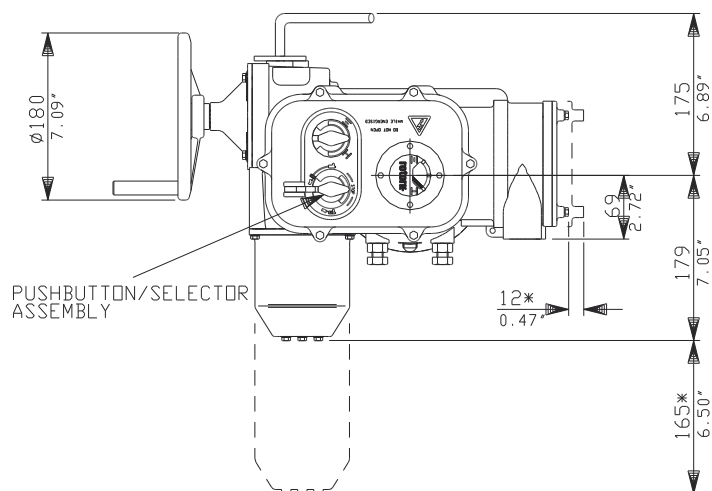


F07 & FA07 BASES



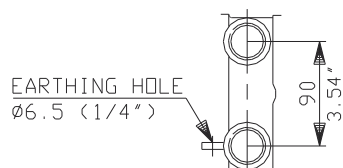
F10 & FA10 BASES





ACTUATOR SHOWN WITH F10 BASE.

CONDUIT ENTRIES (N.T.S)



TAPPED 2 X M32
STANDARD ALTERNATIVES IF SPECIFIED
2 X 1 1/4" NPT
2 X PG21

rotork	Rotork Controls Ltd.
	Bath, England BA1 3J0
	Bath (01225)733200
Q300 DATA	
Date 141097	

Q300D

A4