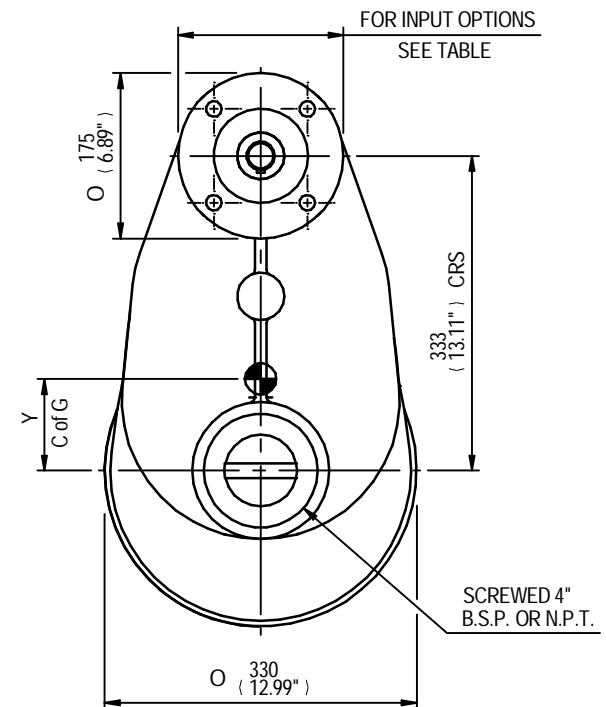
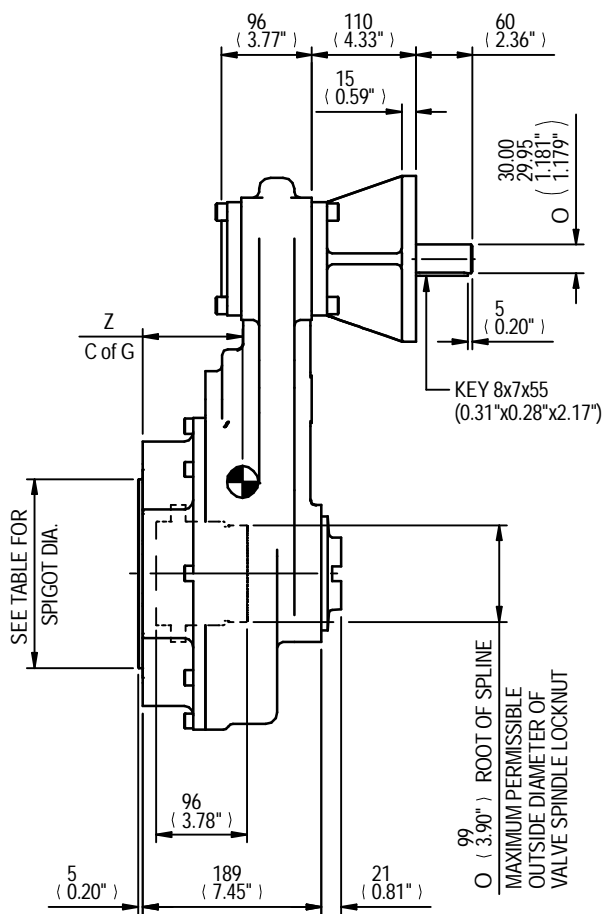


SEE TABLE FOR BORE & KEY DETAILS

SEE TABLE FOR BASEPLATE DETAILS

MOUNTING HOLES CAN BE POSITIONED ON CTRS BY REMOVING 8 BOLTS INDICATED AND REPOSITIONING



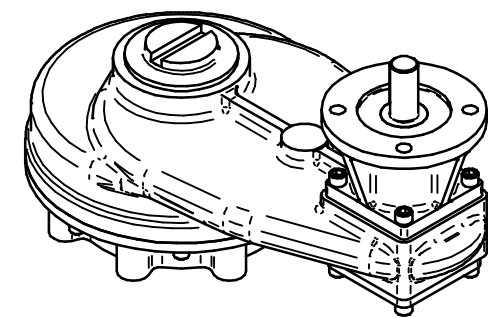
RATIO	M.A.	C.O.G.			MAX OUTPUT TORQUE Nm (lbs.ft)
		X	Y	Z	
4	3.600	0	97	106	2033 (1500)
6	5.490	0	96	106	2033 (1500)
8	7.156	0	95	106	2033 (1500)
10	9.180	0	95	106	2033 (1500)
12	11.030	0	95	106	2033 (1500)
15	13.520	0	95	106	2033 (1500)

MAX BORE SQ KEY			MAX BORE RECTANGULAR KEY		
STD	BORE	KEY	STD	BORE	KEY
BS4235	-	-	BS4235	76.0	22X14
BS46	2.750	3/4" SQ	BS46	3.000	3/4"X1/2"
ANSI B17.1	2.750	5/8" SQ	ANSI B17.1	3.000	3/4"X1/2"

MAX STEM SCREW ACCEPTANCE DIA.
86(3.375)

INPUT FLANGE DETAILS					
ISO F14	FLANGE	SHAFT	RECESS	RECESS	HOLE DETAILS
	O/DIA. & THICKNESS	DIA.	DIA.	DEPTH	45°(OFF CENTRES) DETAILS
ISO F14	Ø175 x 15 (Ø6.89" x 0.59")	Ø30.00-0.05 (Ø1.181"-0.002")	Ø100.05+0.05 (Ø3.939"+0.002")	5 (0.20")	4 HOLES Ø16.5 (Ø0.65") ON Ø140.0 (Ø5.51") P.C.
	Ø175 x 15 (Ø6.89" x 0.59")	Ø30.00-0.05 (Ø1.181"-0.002")	Ø95.27+0.05 (Ø3.751"+0.002")	5 (0.20")	4 HOLES Ø16.5 (Ø0.65") ON Ø140.0 (Ø5.51") P.C.

BASEPLATE DETAILS		
ISO F25	SPIGOT DIA.	HOLE DETAILS (22.5° OFF CENTRES)
ISO F25	Ø199.95-0.05 (Ø7.872"-0.002")	8 HOLES M16X20 (0.79") DEEP ON Ø254.0 (Ø10.00") P.C.
	Ø152.25-0.05 (Ø5.994"-0.002")	8 HOLES 5/8"UNCX20 (0.79") DEEP ON Ø254.4 (Ø10.00") P.C.



IS9 GEARBOX F14/FA14 INPUT F25/FA25 OUTPUT

DETAILS SUBJECT TO CHANGE WITHOUT PRIOR NOTICE

FOR UP TO DATE DETAILS VISIT www.rotork.com

APPROX WEIGHT 77.9 kg

DRAWING No	PUBIS9-F14-F25	Regina House Ring Road Bramley Leeds LS134ET United Kingdom
ISSUE	A	
DATE	03/06/2011	