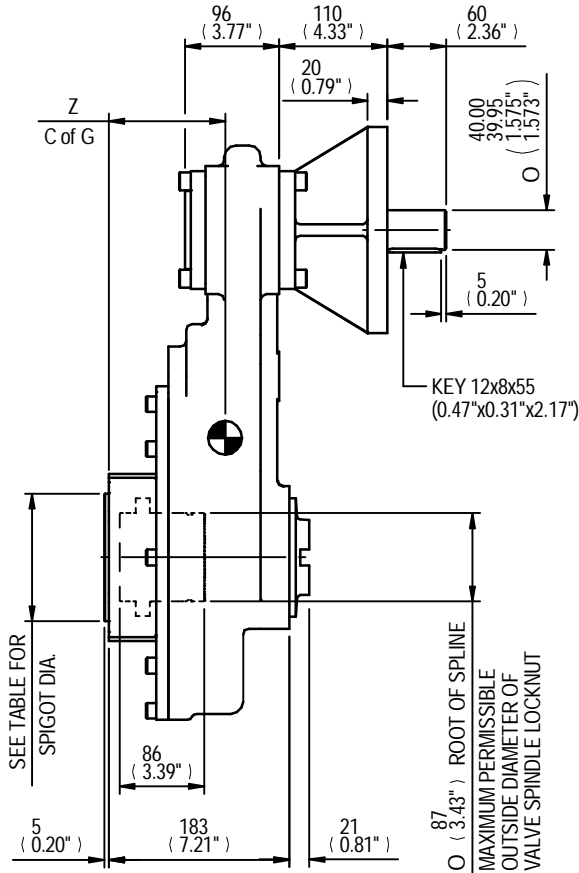


SEE TABLE FOR BORE & KEY DETAILS

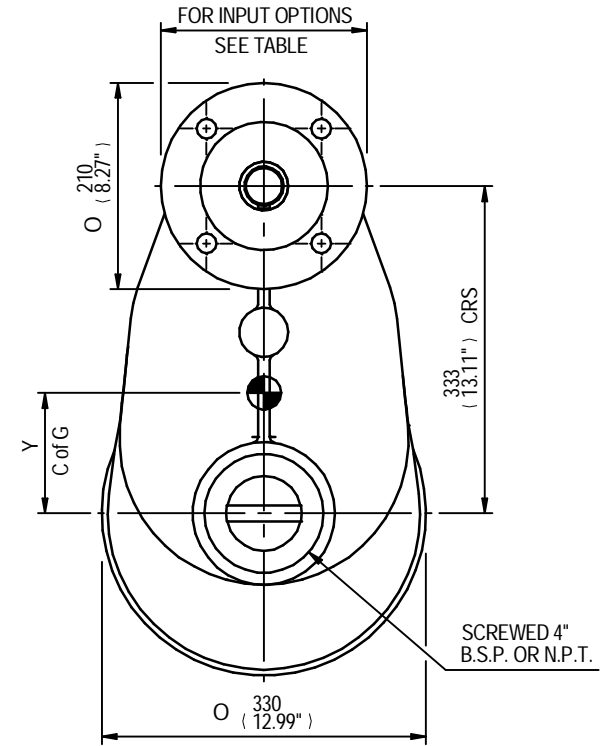
SEE TABLE FOR BASEPLATE DETAILS

MOUNTING HOLES CAN BE POSITIONED ON CTRS BY REMOVING 8 BOLTS INDICATED AND REPOSITIONING



SEE TABLE FOR SPIGOT DIA.

KEY 12x8x55 (0.47"x0.31"x2.17")
O (3.43") ROOT OF SPLINE
MAXIMUM PERMISSIBLE OUTSIDE DIAMETER OF VALVE SPINDLE LOCKNUT



FOR INPUT OPTIONS SEE TABLE

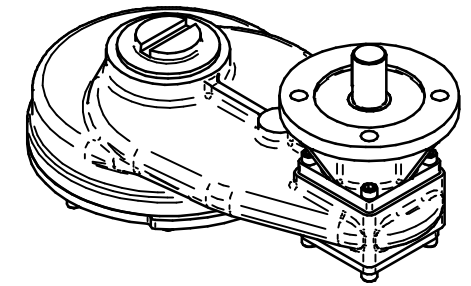
C of G

SCREWED 4" B.S.P. OR N.P.T.

RATIO	M.A.	C.O.G.			MAX OUTPUT TORQUE Nm (lbs.ft)
		X	Y	Z	
4	3.600	0	122	118	2033 (1500)
6	5.490	0	120	118	2033 (1500)
8	7.156	0	119	118	2033 (1500)
10	9.180	0	119	119	2033 (1500)
12	11.030	0	119	119	2033 (1500)
15	13.520	0	119	119	2033 (1500)

MAX BORE SQ KEY			MAX BORE RECTANGULAR KEY			MAX STEM SCREW ACCEPTANCE DIA
STD	BORE	KEY	STD	BORE	KEY	
BS4235	-	-	BS4235	68.0	20X12	73(2.750")
BS46	2.500"	5/8" SQ	BS46	2.625"	3/4"x1/2"	
ANSI B17.1	2.500"	5/8" SQ	ANSI B17.1	2.625"	5/8"x7/16"	

	INPUT FLANGE DETAILS					BASEPLATE DETAILS	
	FLANGE O/DIA. & THICKNESS	SHAFT DIA.	RECESS DIA.	RECESS DEPTH	HOLE DETAILS 45°(OFF CENTRES)	KEY DETAILS	BASEPLATE HOLE DETAILS (45° OFF CENTRES)
ISO F16	Ø210 x 20	Ø40.00-0.05	Ø130.05+0.05	5	4 HOLES Ø20.5 (Ø0.81")	12x8x55	Ø129.95-0.05 4 HOLES M20X25 (0.98") DEEP
	(Ø8.27" x 0.79")	(Ø1.575"-0.002")	(Ø5.120"+0.002")	(0.20")	ON Ø165.0 (Ø6.50") P.C	(0.47"x0.31"x2.17")	ON Ø165.0 (Ø6.50") P.C.
FA16	Ø210 x 20	Ø40.00-0.05	Ø126.92+0.05	5	4 HOLES Ø20.5 (Ø0.81")	12x8x55	Ø126.87-0.25 4 HOLES 3/4"UNCX25 (0.98") DEEP
	(Ø8.27" x 0.79")	(Ø1.575"-0.002")	(Ø4.997"+0.002")	(0.20")	ON Ø165.0 (Ø6.50") P.C	(0.47"x0.31"x2.17")	ON Ø165.1 (Ø6.50") P.C.



rotork gears

IS8 GEARBOX
F16/FA16 INPUT F16/FA16 OUTPUT

APPROX WEIGHT 69.5 kg

DETAILS SUBJECT TO CHANGE WITHOUT PRIOR NOTICE

FOR UP TO DATE DETAILS VISIT www.rotork.com

DRAWING No	PUBIS8-F16-F16	Regina House Ring Road Bramley Leeds LS134ET United Kingdom
ISSUE	A	
DATE	10/06/2011	