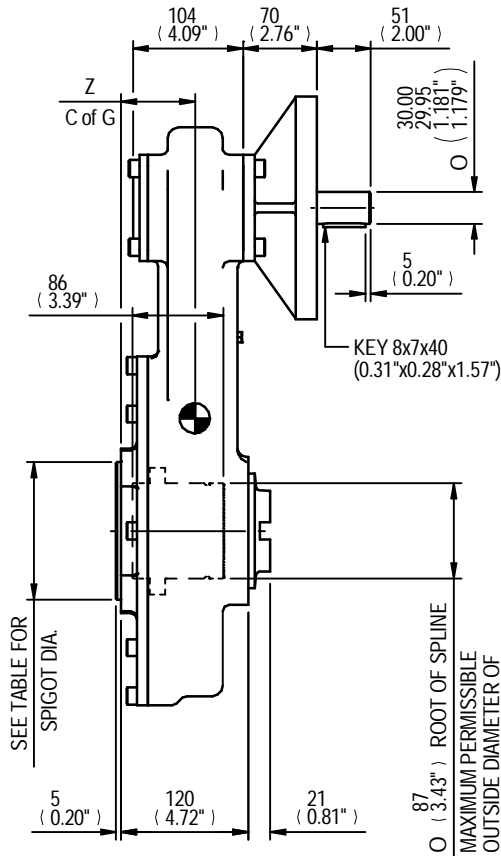


SEE TABLE FOR BORE & KEY DETAILS

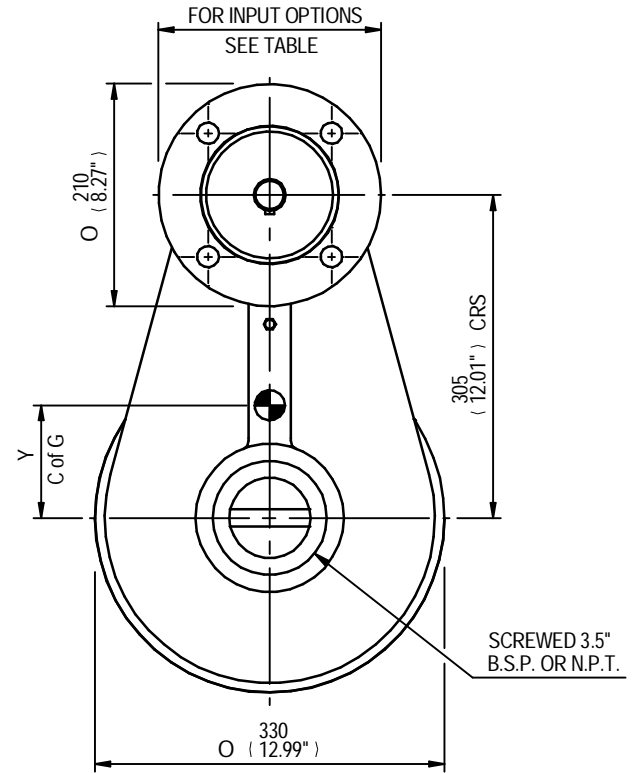
SEE TABLE FOR BASEPLATE DETAILS

MOUNTING HOLES CAN BE POSITIONED ON CTRS BY REMOVING 8 BOLTS INDICATED AND REPOSITIONING



SEE TABLE FOR SPIGOT DIA.

87 O (3.43") ROOT OF SPLINE  
MAXIMUM PERMISSIBLE OUTSIDE DIAMETER OF VALVE SPINDLE LOCKNUT



SCREWED 3.5" B.S.P. OR N.P.T.

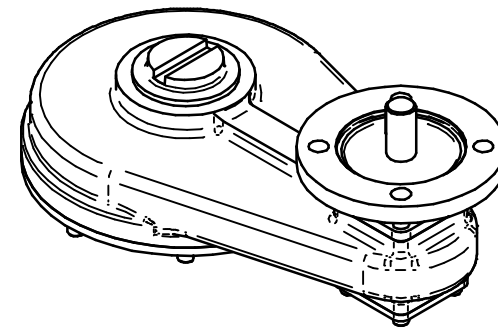
RATIO	M.A.	C.O.G.			MAX OUTPUT TORQUE Nm (lbs.ft)
		X	Y	Z	
2	1.800	0	106	70	1355 (1000)
3	2.700	0	102	70	1355 (1000)
4	3.600	0	100	70	1355 (1000)
6	5.400	0	100	70	1355 (1000)
8	7.200	0	96	70	1355 (1000)

MAX BORE SQ KEY			MAX BORE RECTANGULAR KEY		
STD	BORE	KEY	STD	BORE	KEY
BS4235	-	-	BS4235	68.0	20X12
BS46	2.500	5/8" SQ	BS46	2.625	3/4"X1/2"
ANSI B17.1	2.500	5/8" SQ	ANSI B17.1	2.625	5/8"X7/16"

MAX STEM SCREW ACCEPTANCE DIA
73(2.750")

	INPUT FLANGE DETAILS				
	FLANGE O/DIA. & THICKNESS	SHAFT DIA.	RECESS DIA.	RECESS DEPTH	HOLE DETAILS 45°(OFF CENTRES) DETAILS
ISO F16	Ø210 x 20	Ø30.00-0.05	Ø130.05+0.05	5	4 HOLES Ø20.5 (Ø0.81")
	(Ø8.27" x 0.79")	(Ø1.181"-0.002")	(Ø5.120"+0.002")	(0.20")	ON Ø165.0 (Ø6.50") P.C. (0.31"x0.28"x1.57")
FA16	Ø210 x 20	Ø30.00-0.05	Ø126.92+0.05	5	4 HOLES Ø20.5 (Ø0.81")
	(Ø8.27" x 0.79")	(Ø1.181"-0.002")	(Ø4.997"+0.002")	(0.20")	ON Ø165.0 (Ø6.50") P.C. (0.31"x0.28"x1.57")

	BASEPLATE DETAILS	
	SPIGOT DIA.	HOLE DETAILS (45° OFF CENTRES)
ISO F16	Ø129.95-0.05	4 HOLES M20X25 (0.98") DEEP
	(Ø5.116"-0.002")	ON Ø165.0 (Ø6.50") P.C.
FA16	Ø126.87-0.25	4 HOLES 3/4"UNCX25 (0.98") DEEP
	(Ø4.995"-0.010")	ON Ø165.1 (Ø6.50") P.C.



## IS7 GEARBOX F16/FA16 INPUT F16/FA16 OUTPUT

DETAILS SUBJECT TO CHANGE WITHOUT PRIOR NOTICE

FOR UP TO DATE DETAILS VISIT [www.rotork.com](http://www.rotork.com)

APPROX WEIGHT 51.6 kg

DRAWING No	PUBIS7-F16-F16	Regina House Ring Road Bramley Leeds LS134ET United Kingdom
ISSUE	A	
DATE	27/05/2011	