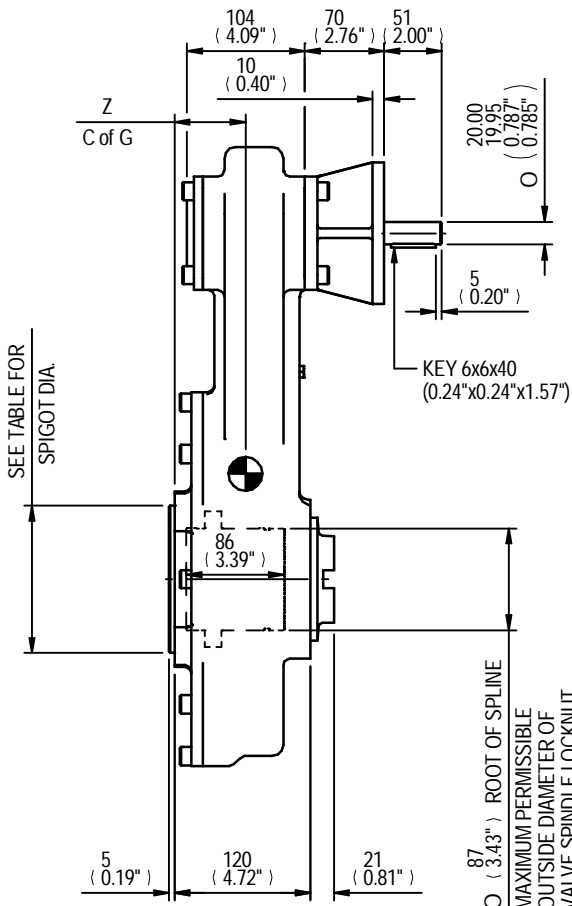


SEE TABLE FOR BORE & KEY DETAILS

SEE TABLE FOR BASEPLATE DETAILS

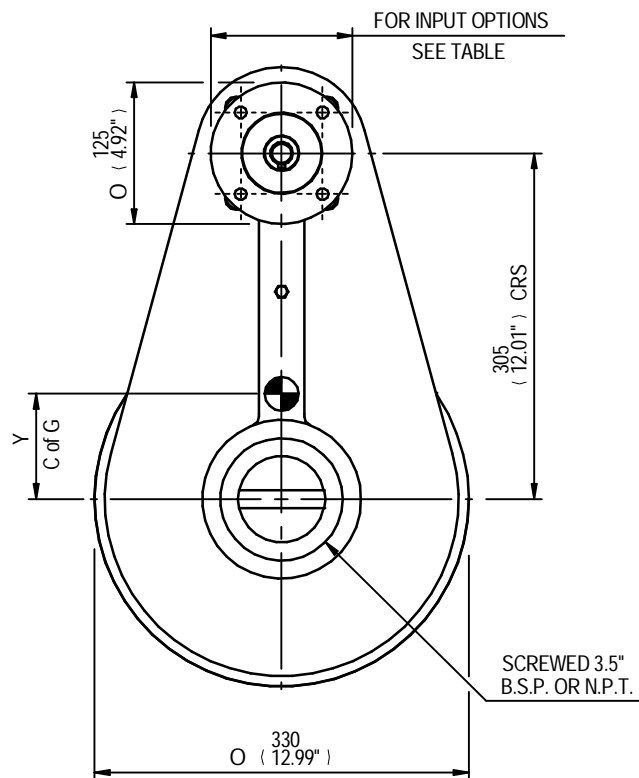
MOUNTING HOLES CAN BE POSITIONED ON CTRS BY REMOVING 8 BOLTS INDICATED AND REPOSITIONING



SEE TABLE FOR SPIGOT DIA.

KEY 6x6x40 (0.24"x0.24"x1.57")

87 (3.43") ROOT OF SPLINE
O (0.19") MAXIMUM PERMISSIBLE OUTSIDE DIAMETER OF VALVE SPINDLE LOCKNUT



FOR INPUT OPTIONS SEE TABLE

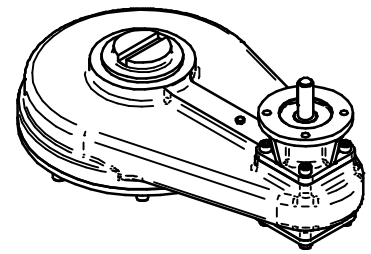
SCREWED 3.5" B.S.P. OR N.P.T.

RATIO	M.A.	C.O.G.			MAX. OUTPUT TORQUE Nm (lbs.ft)
		X	Y	Z	
2	1.800	0	93	63	1355 (1000)
3	2.700	0	88	62	1355 (1000)
4	3.600	0	97	63	1355 (1000)
6	5.400	0	86	62	1355 (1000)
8	7.200	0	82	63	1355 (1000)

MAX BORE SQ KEY			MAX BORE RECTANGULAR KEY			MAX STEM SCREW ACCEPTANCE DIA
STD	BORE	KEY	STD	BORE	KEY	
BS4235	-	-	BS4235	68.0	20X12	73(2.750")
BS46	2.500"	5/8" SQ	BS46	2.625"	3/4" X 1/2"	
ANSI B17.1	2.500"	5/8" SQ	ANSI B17.1	2.625"	5/8" X 7/16"	

	INPUT FLANGE DETAILS					
	FLANGE	SHAFT	RECESS	RECESS	HOLE DETAILS	KEY
	O/DIA. & THICKNESS	DIA.	DIA.	DEPTH	45°(OFF CENTRES)	DETAILS
ISO F10	Ø125 x 10	Ø20.00-0.05	Ø70.05+0.05	5	4 HOLES Ø10.5 (Ø0.41")	6x6x40
	(Ø4.92" x 0.39")	(Ø0.787"-0.002")	(Ø2.758"+0.002")	(0.20")	ON Ø102.0 (Ø4.02") P.C	(0.24"x0.24"x1.57")
FA10	Ø125 x 10	Ø20.00-0.05	Ø58.75+0.05	5	4 HOLES Ø10.5 (Ø0.41")	6x6x40
	(Ø4.92" x 0.39")	(Ø0.787"-0.002")	(Ø2.313"+0.002")	(0.20")	ON Ø102.0 (Ø4.02") P.C	(0.24"x0.24"x1.57")

	BASEPLATE DETAILS	
	SPIGOT DIA.	HOLE DETAILS (45° OFF CENTRES)
ISO F16	Ø129.95-0.05	4 HOLES M20X25 (0.98") DEEP
	(Ø5.116"-0.002")	ON Ø165.0 (Ø6.50") P.C.
FA16	Ø126.87-0.25	4 HOLES 3/4"UNCX25 (0.98") DEEP
	(Ø4.995"-0.010")	ON Ø165.1 (Ø6.50") P.C.



IS7 GEARBOX
F10/FA10 INPUT F16/FA16 OUTPUT

DETAILS SUBJECT TO CHANGE WITHOUT PRIOR NOTICE

FOR UP TO DATE DETAILS VISIT www.rotork.com

APPROX WEIGHT 48.4 kg

DRAWING No	PUBIS7-F10-F16	Regina House Ring Road Bramley Leeds LS134ET United Kingdom
ISSUE	A	
DATE	27/05/2011	