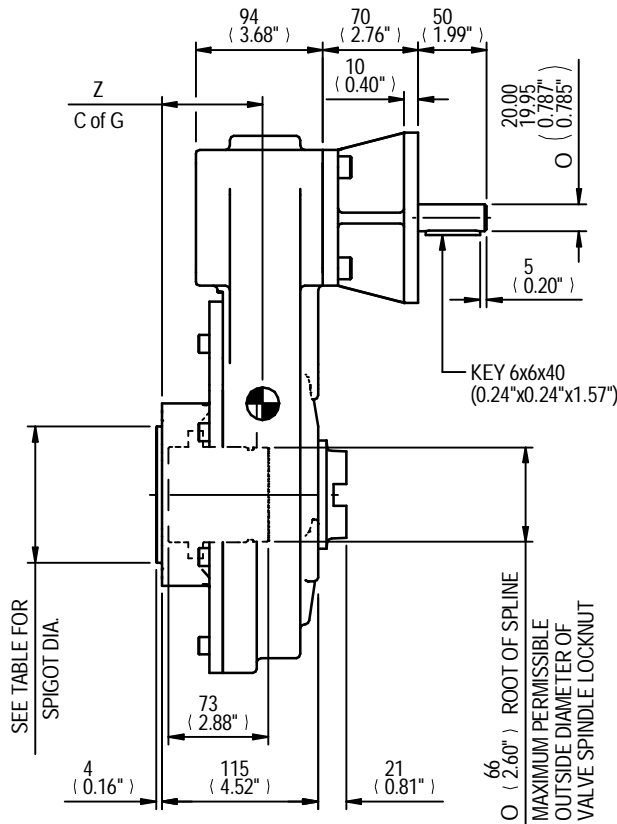


SEE TABLE FOR BORE & KEY DETAILS

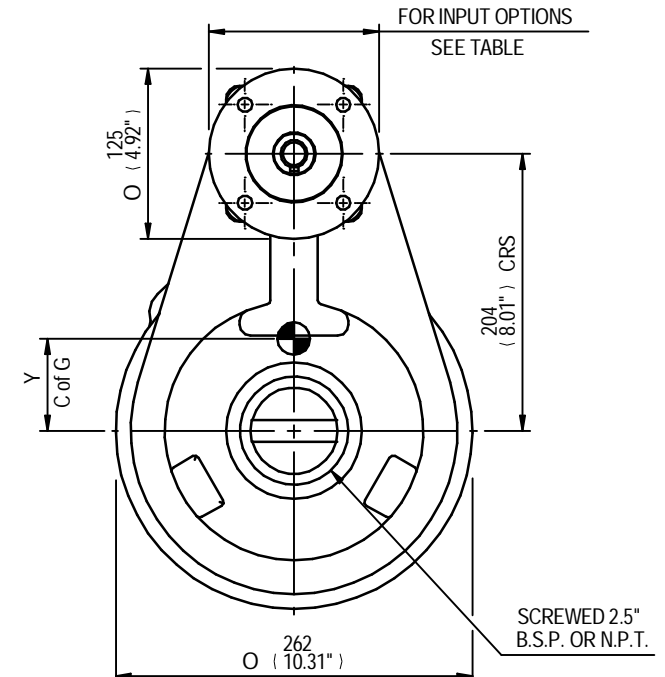
SEE TABLE FOR BASEPLATE DETAILS

MOUNTING HOLES CAN BE POSITIONED ON CTRS BY REMOVING 8 BOLTS INDICATED AND REPOSITIONING



SEE TABLE FOR SPIGOT DIA.

66 (2.60") ROOT OF SPLINE
MAXIMUM PERMISSIBLE OUTSIDE DIAMETER OF VALVE SPINDLE LOCKNUT



FOR INPUT OPTIONS SEE TABLE

SCREWED 2.5" B.S.P. OR N.P.T.

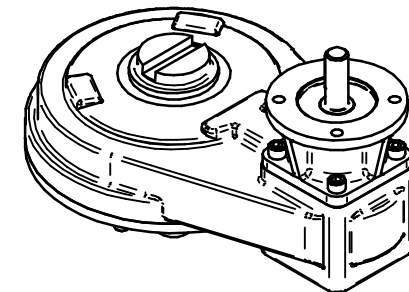
RATIO	M.A.	C.O.G.			MAX OUTPUT TORQUE Nm (lbs.ft)
		X	Y	Z	
2	1.900	0	67	74	678 (500)
3	2.700	0	65	74	678 (500)
4	3.690	0	60	74	678 (500)
6	5.400	0	59	74	678 (500)

MAX BORE SQ KEY			MAX BORE RECTANGULAR KEY		
STD	BORE	KEY	STD	BORE	KEY
BS4235	-	-	BS4235	52.0	16 x 10
BS46	1.875	1/2" SQ	BS46	2.000	1/2" x 5/16"
ANSI B17.1	1.875	1/2" SQ	ANSI B17.1	2.000	1/2" x 3/8"

MAX STEM SCREW ACCEPTANCE DIA
55 (2.125")

	INPUT FLANGE DETAILS				
	FLANGE O/DIA. & THICKNESS	SHAFT DIA.	RECESS DIA.	RECESS DEPTH	HOLE DETAILS 45°(OFF CENTRES)
ISO F10	Ø125 x 10	Ø20.00-0.05	Ø70.05+0.05	5	4 HOLES Ø10.5 (Ø0.41")
	(Ø4.92" x 0.39")	(Ø0.787"-0.002")	(Ø2.758"+0.002")	(0.20")	ON Ø102.0 (Ø4.02") P.C (0.24"x0.24"x1.57")
FA10	Ø125 x 10	Ø20.00-0.05	Ø58.75+0.05	5	4 HOLES Ø10.5 (Ø0.41")
	(Ø4.92" x 0.39")	(Ø0.787"-0.002")	(Ø2.313"+0.002")	(0.20")	ON Ø102.0 (Ø4.02") P.C (0.24"x0.24"x1.57")

	BASEPLATE DETAILS	
	SPIGOT DIA.	HOLE DETAILS (45° OFF CENTRES)
ISO F14	Ø99.95-0.05	4 HOLES M16x20 (0.79") DEEP
	(Ø3.935"-0.002")	ON Ø140.0 (Ø5.51") P.C.
FA14	Ø95.22-0.10	4 HOLES 5/8"UNCx20 (0.79") DEEP
	(Ø3.749"-0.004")	ON Ø139.7 (Ø5.50") P.C.



rotork gears

IS5 GEARBOX
F10/FA10 INPUT F14/FA14 OUTPUT

DETAILS SUBJECT TO CHANGE WITHOUT PRIOR NOTICE

FOR UP TO DATE DETAILS VISIT www.rotork.com

APPROX WEIGHT 30.1 kg

DRAWING No	PUBIS5-F10-F14	Regina House Ring Road Bramley Leeds LS134ET United Kingdom
ISSUE	A	
DATE	10/06/2011	