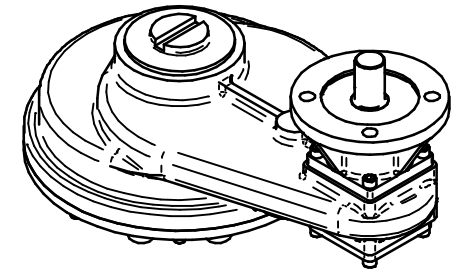
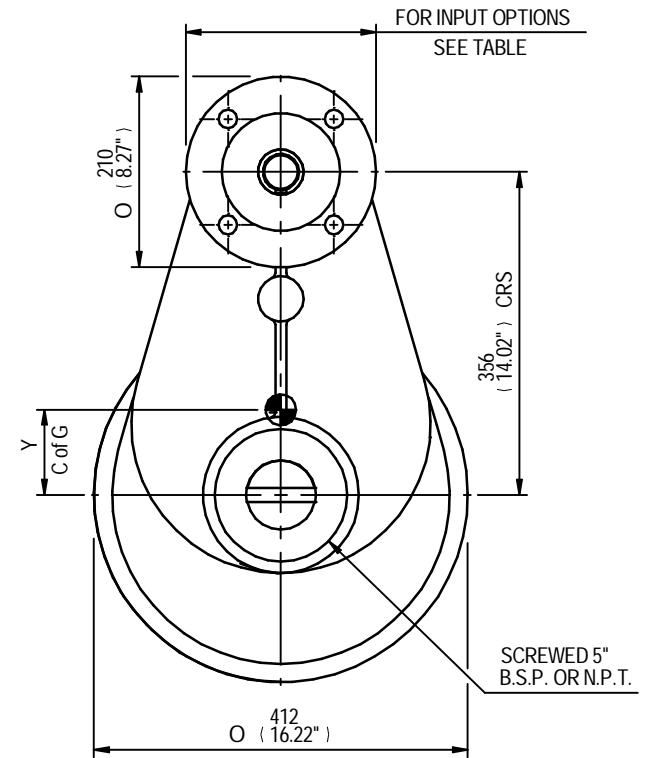
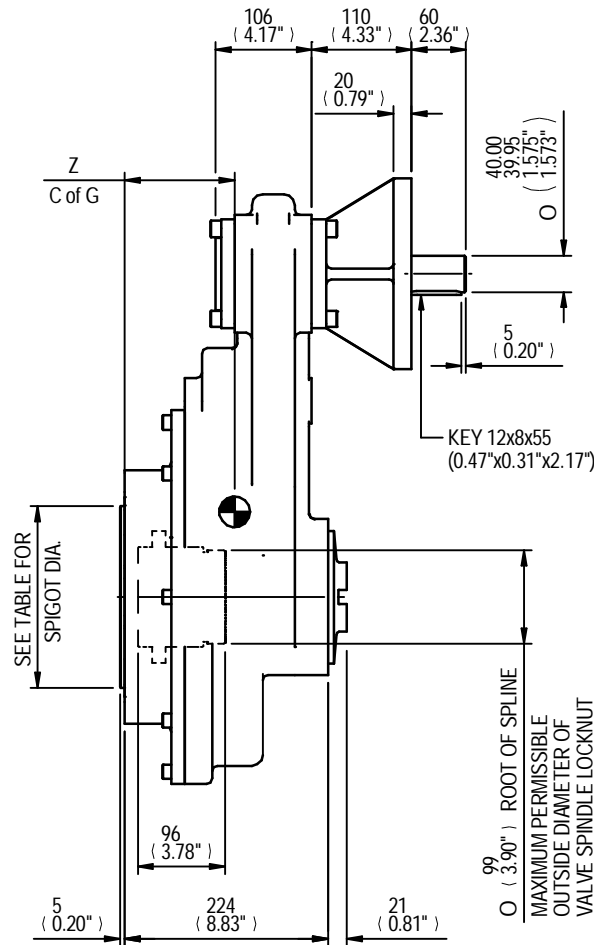


RATIO	M.A.	C.O.G.			MAX OUTPUT TORQUE Nm (lbs.ft)
		X	Y	Z	
4	3.633	0	94	121	4067 (3000)
6	5.500	0	93	121	4067 (3000)
8	7.025	0	92	121	4067 (3000)
10	8.156	0	92	121	4067 (3000)
12	10.900	0	92	122	4067 (3000)
15	13.194	0	92	122	4067 (3000)

MAX BORE SQ KEY			MAX BORE RECTANGULAR KEY			MAX STEM SCREW ACCEPTANCE DIA. 86 (3.375)
STD	BORE	KEY	STD	BORE	KEY	
BS4235	-	-	BS4235	76.0	22 x 14	
BS46	2.750	3/4" SQ	BS46	3.000	3/4" x 1/2"	
ANSI B17.1	2.750	5/8" SQ	ANSI B17.1	3.000	3/4" x 1/2"	

MOUNTING HOLES CAN BE POSITIONED ON CTRS BY REMOVING 8 BOLTS INDICATED AND REPOSITIONING



	INPUT FLANGE DETAILS				
	FLANGE O/DIA. & THICKNESS	SHAFT DIA.	RECESS DIA.	RECESS DEPTH	HOLE DETAILS 45°(OFF CENTRES) DETAILS
ISO F16	Ø210 x 20 (Ø8.27" x 0.79")	Ø40.00-0.05 (Ø1.575"-0.002")	Ø130.05+0.05 (Ø5.120"+0.002")	5 (0.20")	4 HOLES Ø20.5 (Ø0.81") ON Ø165.0 (Ø6.50") P.C. (0.47"x0.31"x2.17")
	Ø210 x 20 (Ø8.27" x 0.79")	Ø40.00-0.05 (Ø1.575"-0.002")	Ø126.92+0.05 (Ø4.997"+0.002")	5 (0.20")	4 HOLES Ø20.5 (Ø0.81") ON Ø165.0 (Ø6.50") P.C. (0.47"x0.31"x2.17")

	BASEPLATE DETAILS	
	SPIGOT DIA.	HOLE DETAILS (22.5° OFF CENTRES)
ISO F25	Ø199.95-0.05 (Ø7.872"-0.002")	8 HOLES M16X20 (0.79") DEEP ON Ø254.0 (Ø10.00") P.C.
FA25	Ø152.25-0.05 (Ø5.994"-0.002")	8 HOLES 5/8"UNCX20 (0.79") DEEP ON Ø254.4 (Ø10.00") P.C.

**rotork
gears**

IS10 GEARBOX
F16/FA16 INPUT F25/FA25 OUTPUT

DETAILS SUBJECT TO CHANGE WITHOUT PRIOR NOTICE

FOR UP TO DATE DETAILS VISIT www.rotork.com

APPROX WEIGHT 106.1 kg

DRAWING No	PUBIS10-F16-F25	Regina House Ring Road Bramley Leeds LS134ET United Kingdom
ISSUE	A	
DATE	03/06/2011	