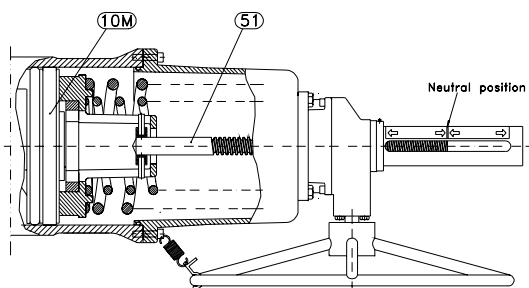


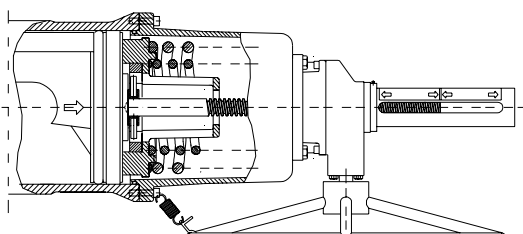
RCG90-100

With manual override unit M1



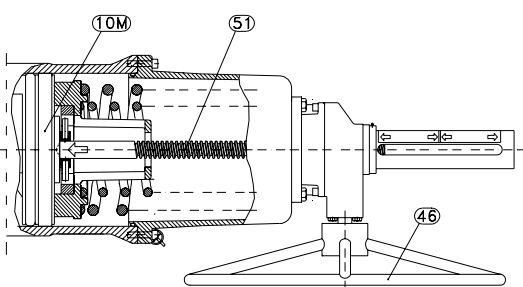
Neutral position

With the stem (51) in neutral position the piston (10M) can move freely and the actuator can be driven pneumatically. The picture shows a double-acting actuator RCG-DA in "open" position or a single-acting actuator RCG-SR in "closed" position.



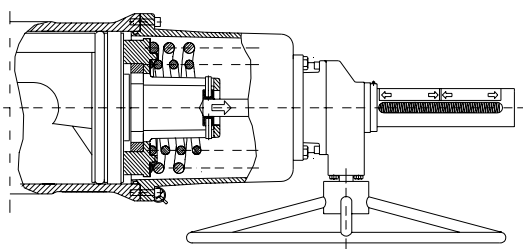
End position adjustment

M1 in neutral position works as an end position stop.
RCG-DA: Adjustment of "closed" valve position.
RCG-SR: Adjustment of "open" position.
Adjustment: $+3^\circ$ / -90° in relation to the end position.



Manual operation

RCG-DA: The handwheel (46) is turned anti-clockwise. The stem (51) and the piston (10M) are pressed inwards. The valve opens.
RCG-SR: The handwheel is turned clockwise. The stem and the piston are pressed inwards (by spring force or by handwheel force). The valve closes.



Manual operation

RCG-DA: The handwheel is turned clockwise. The stem and the piston are drawn outwards. The valve closes.
RCG-SR: The handwheel is turned anti-clockwise. The stem and the piston are drawn outwards. The valve opens.

WARNING!

When dismantling. Please see Instruction No 369.

The actuator drive shaft is thus turned in the same direction as the handwheel. When the actuator has been manually operated, a return to the neutral position must take place before remote operation can be performed again.

RCG-SR in "Fail open" design and RCG-DA actuators with "SR-mounted" pistons have reversed function compared to the above.

www.remotecontrol.se



Remote Control
www.remotecontrol.se
info@remotecontrol.se



Remote Control
www.remotecontrol.de
info@remotecontrol.de



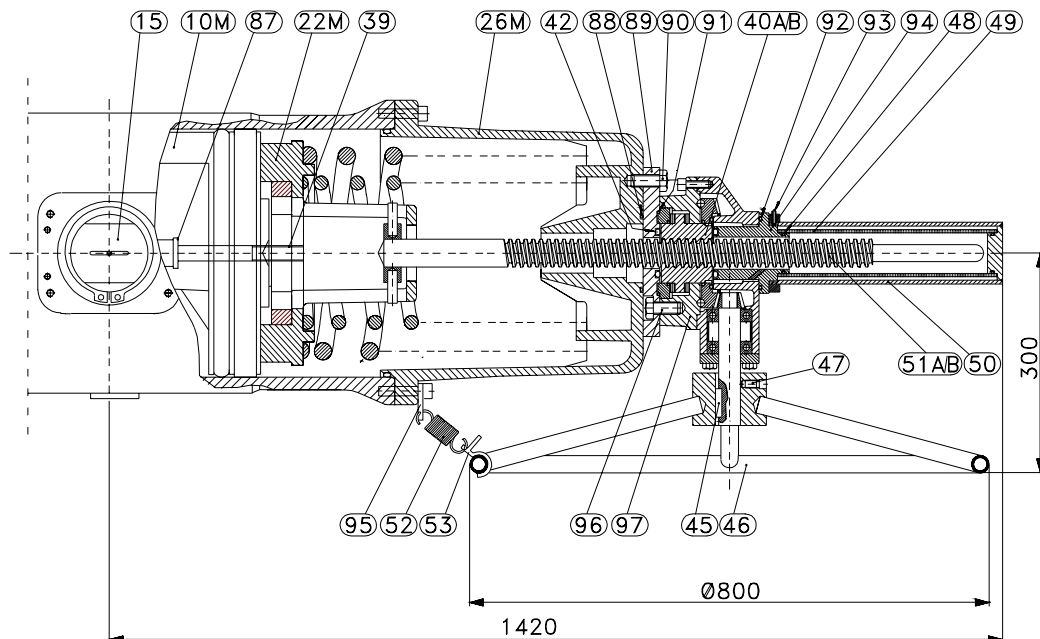
Remote Control
www.remotecontrol.co.uk
info@remotecontrol.co.uk



Remote Control
www.remotecontrol.com.sg
info@remotecontrol.com.sg



Remote Control
www.rciactuators.com
sales@rciactuators.com



Springs only in SR execution. Otherwise the drawing shows a DA actuator in "open" position.

Material table for M1 to RCG90-100

Pos	Description	Material
10M	Piston in manual operation design	Aluminium
15	Shaft (standard design)	Steel, yellow chromated
22M	Spring guide M	Ductile iron
26M	Housing for manual operation	Ductile iron
39	Retaining screw	Steel
40A	Stem nut for RCG-DA (right hand thread)	Aluminium bronze
40B	Stem nut for RCG-SR (left hand thread)	Aluminium bronze
42	O-ring (2 pcs)	Nitrile
45	Key	Key steel
46	Handwheel with hub	Steel, epoxy painted
47	Set screw	Stainless steel
48	O-ring (2 pcs)	Nitrile
49	Tube, transparent	Acrylic plastic
50	Protective tube	Steel, epoxy painted
51A	Stem for RCG-DA (right hand thread)	Steel
51B	Stem for RCG-SR (left hand thread)	Steel
52	Spring	Stainless spring steel
53	Fastening hook	Steel, zincified
87	Tredo-sealing (2 pcs)	Aluminium / nitrile
88	O-ring	Nitrile
89	Connection flange	Steel, epoxy painted
90	Screw (8 pcs)	Stainless steel
91	O-ring	Nitrile
92	O-ring	Nitrile
93	Set screw	Steel
94	Cuff sealing	Steel, zincified and yellow chromated
95	Spring fastener	Stainless steel
96	Screw (4 pcs)	Stainless steel
97	Bevel drive 4:1	Cast iron, epoxy painted

We reserve our right for modifications caused by technical development.



Remote Control
Kontrollvägen 15
SE-791 45 FALUN
Sweden
Tel +46 (0)23-587 00
Fax +46 (0)23-587 45
www.remotecontrol.se
info@remotecontrol.se



Remote Control
Gutenbergstr. 22
DE-41564 Kaarst-Büttgen
Germany
Tel +49 (0)2131-795 760
Fax +49 (0)2131-795 7615
www.remotecontrol.de



Remote Control
Unit 40, Trent Valley Works,
Station Road, Rugeley
Staffordshire WS15 3HB
England
Tel +44 (0)1889-576 888
Fax +44 (0)1889-577 676
www.remotecontrol.co.uk



Remote Control
67 Ubi Crescent, #01-07
Techniques Centre
Singapore 408560
Tel +65 6848 7150
Fax +65 6746 5815
www.remotecontrol.com.sg



Remote Control
PO Box 355
386 Dry Bridge Rd
North Kingstown, RI 02852
USA
Tel +1 (401) 294-1400
Fax +1 (401) 294-3388
www.rciactuators.com