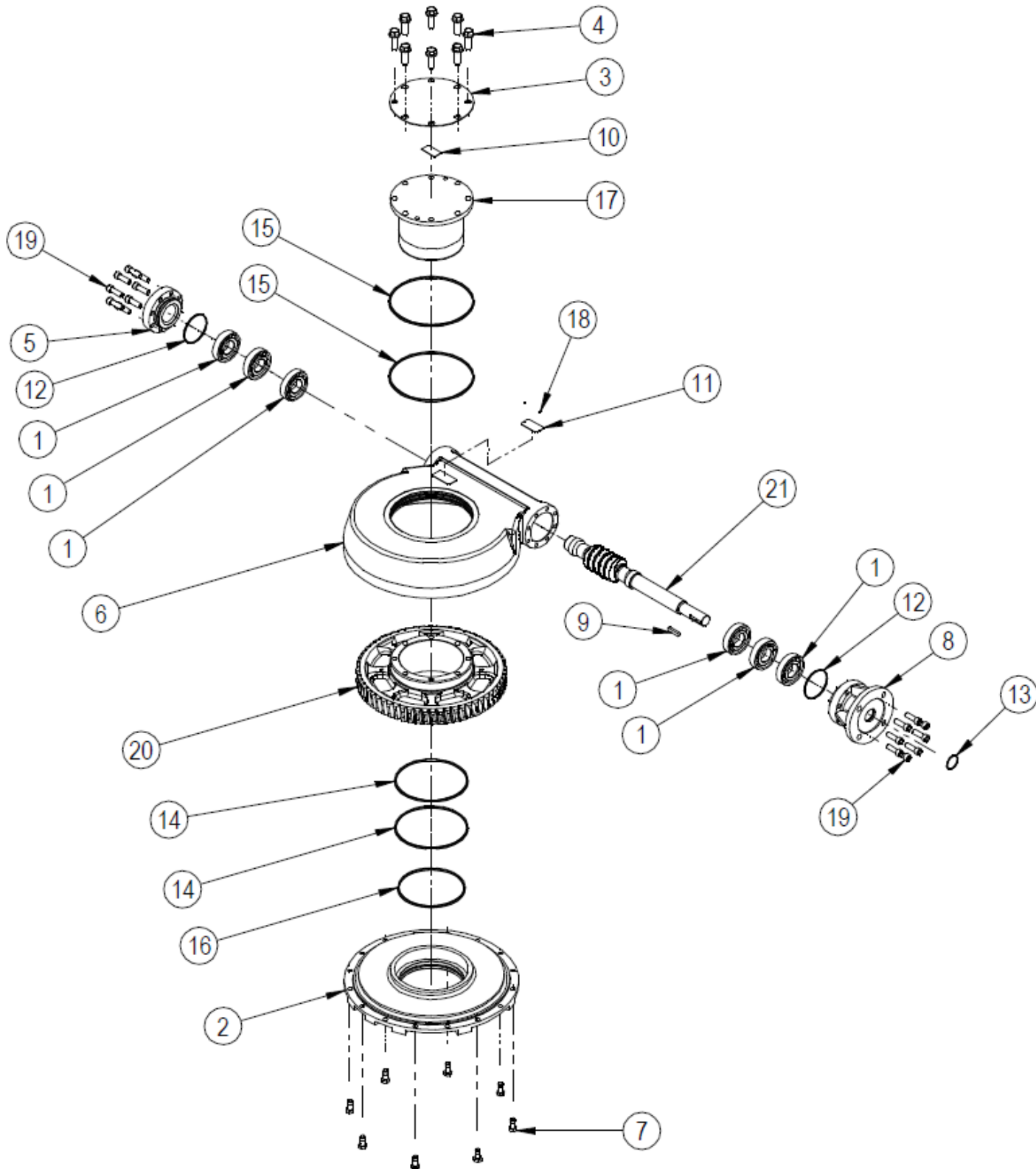


SPARE PARTS LIST FOR MTW9 RANGE OF WORM GEAR ACTUATORS



EXPLODED VIEW FOR MTW9 GEARBOX OPERATIONS

ITEM	DESCRIPTION	QUANTITY
*1	ANGULAR CONTACT BALL BEARING	6
2	BASEPLATE	1
3	INDICATOR PLATE	1
4	SCREW	8
5	ENDCAP	1
6	GEARCASE	1
7	SCREW	8
8	INPUT FLANGE	1
9	KEY	1
10	LABEL	1
11	NAMEPLATE	1
*12	O RING	2 (1 on IR units)
*13	O RING	1
*14	O RING	2
*15	O RING	2
*16	O RING	1
17	OUTPUT SLEEVE	1
18	RIVET (STAINLESS NAMEPLATE ONLY)	2
19	SCREW	16
20	WORMWHEEL	1
21	WORMSHAFT	1
22	GREASE	
23	SHIMS	

Note: Items marked * are the recommended spares holding for 5 years operation

Special solid worm wheels do not have output sleeves and screws but do have the same gearbox rating