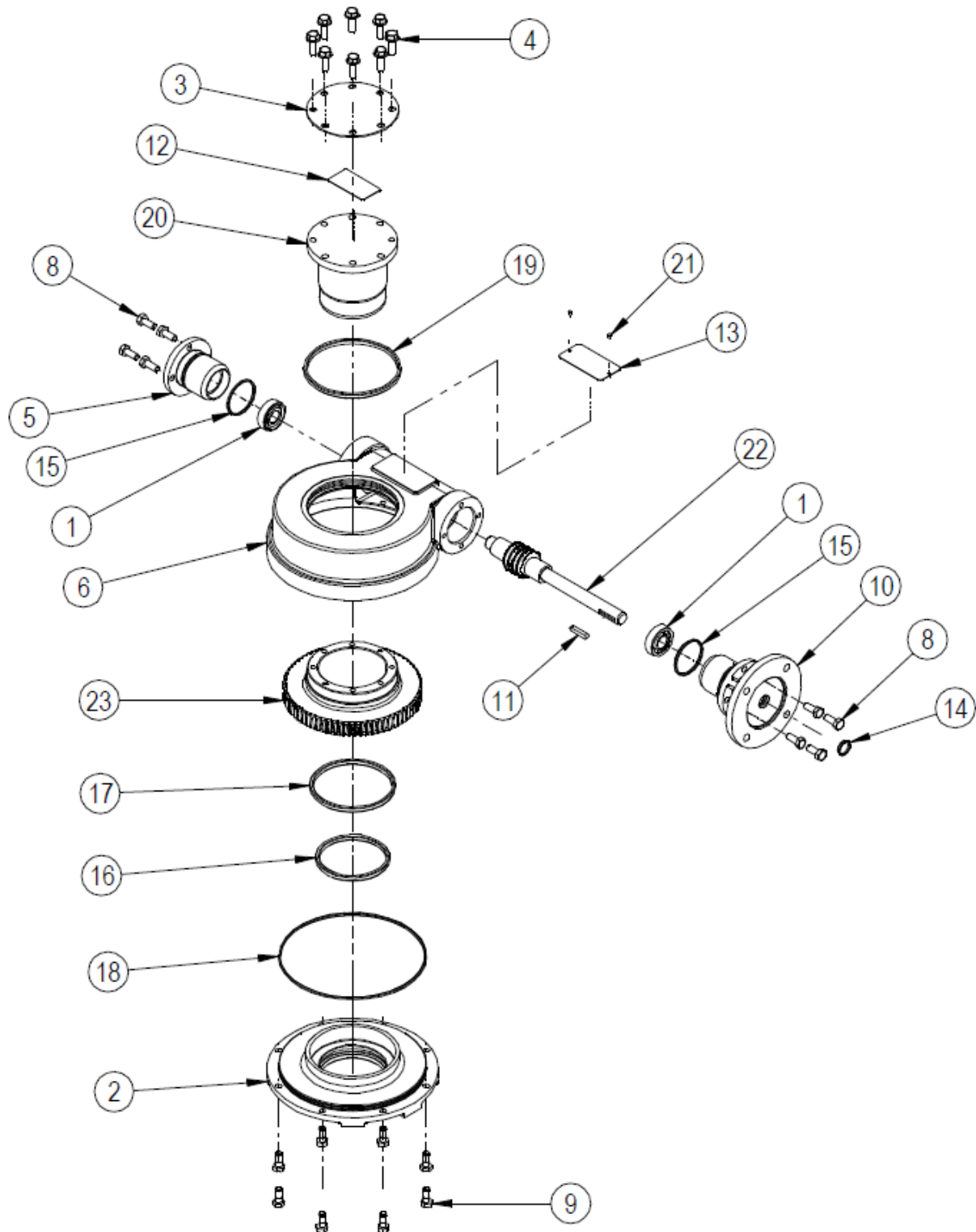


SPARE PARTS LIST FOR MTW (4, 5, 7 AND 8) RANGE OF WORM GEAR ACTUATORS



EXPLODED VIEW FOR MTW (4, 5, 7 AND 8) GEARBOX OPERATIONS

ITEM	DESCRIPTION	QUANTITY
*1	ANGULAR CONTACT BALL BEARING	2
2	BASEPLATE	1
3	INDICATOR PLATE	1
4	SCREW	8
5	ENDCAP	1
6	GEARCASE	1
7	GREASE	
8	SCREW	8
9	SCREW	8
10	INPUT FLANGE	1
11	KEY	1
12	LABEL	1
13	NAMEPLATE	1
*14	O RING	1
*15	O RING	2
*16	O RING	1
*17	O RING	1
*18	O RING	1
*19	O RING	1
20	OUTPUT SLEEVE	1
21	RIVET (STAINLESS NAMEPLATE ONLY)	2
22	WORMSHAFT	1
23	WORMWHEEL	1
24	SHIMS	

Note: Items marked * are the recommended spares holding for 5 years operation

Special solid worm wheels do not have output sleeves and screws but do have the same gearbox rating