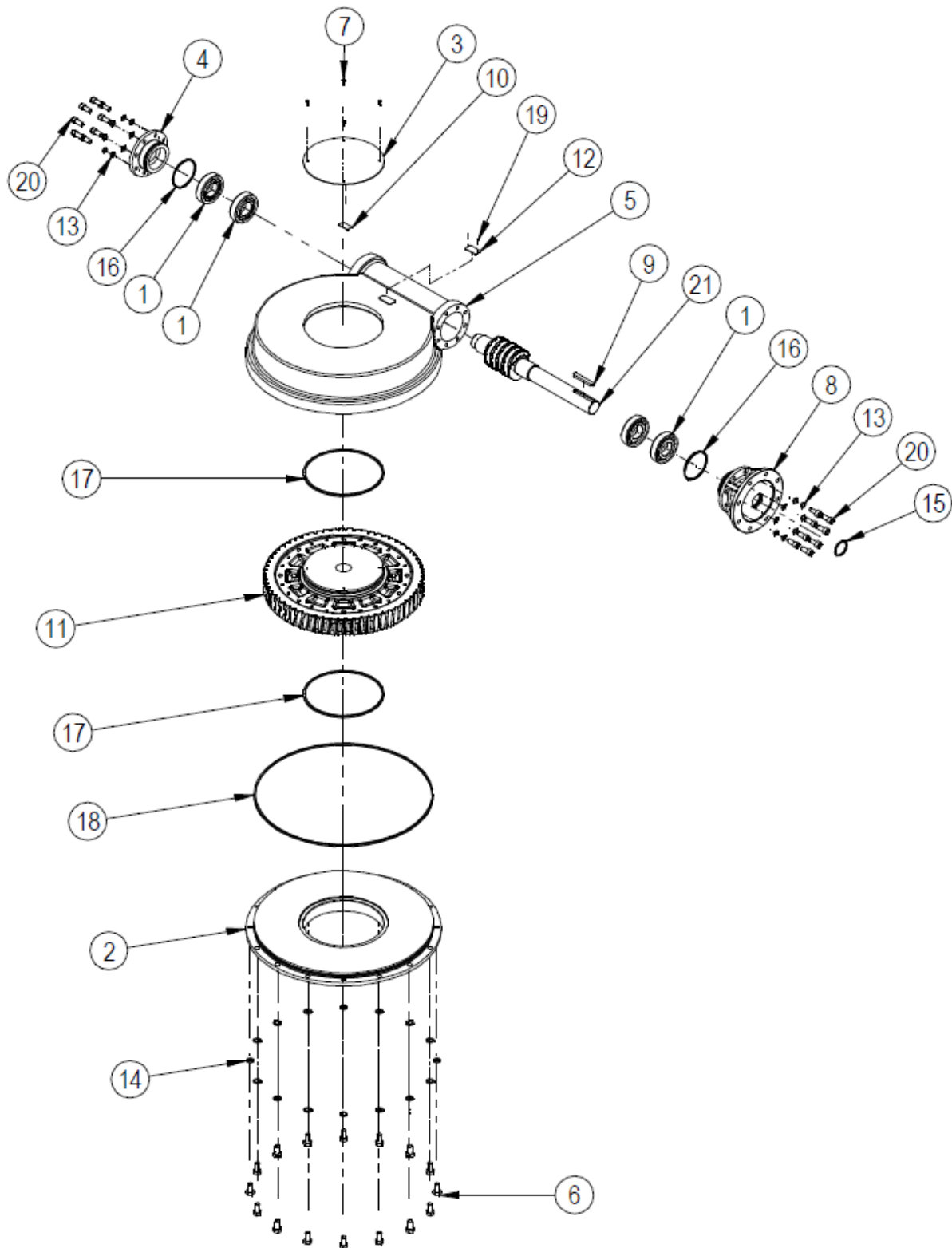


SPARE PARTS LIST FOR MTW12 AND 13 RANGE OF WORM GEAR ACTUATORS



EXPLODED VIEW FOR MTW12 AND MTW13 GEARBOX OPERATIONS

ITEM	DESCRIPTION	QUANTITY
*1	ANGULAR CONTACT BALL BEARING	4
2	BASEPLATE	1
3	INDICATOR PLATE	1
4	ENDCAP	1
5	GEARCASE	1
6	SCREW	16
7	SCREW	4
8	INPUT FLANGE	1
9	KEY	1
10	LABEL	1
11	WORMWHEEL	1
12	NAMEPLATE	1
13	WASHER	16
14	WASHER	16
*15	O RING	1
*16	O RING	2
*17	O RING	2
*18	O RING	1
19	RIVET (STAINLESS NAMEPLATE ONLY)	2
20	SCREW	16
21	WORMSHAFT	1
22	GREASE	
23	SHIMS	

Note: Items marked * are the recommended spares holding for 5 years operation

Special solid worm wheels do not have output sleeves and screws but do have the same gearbox rating