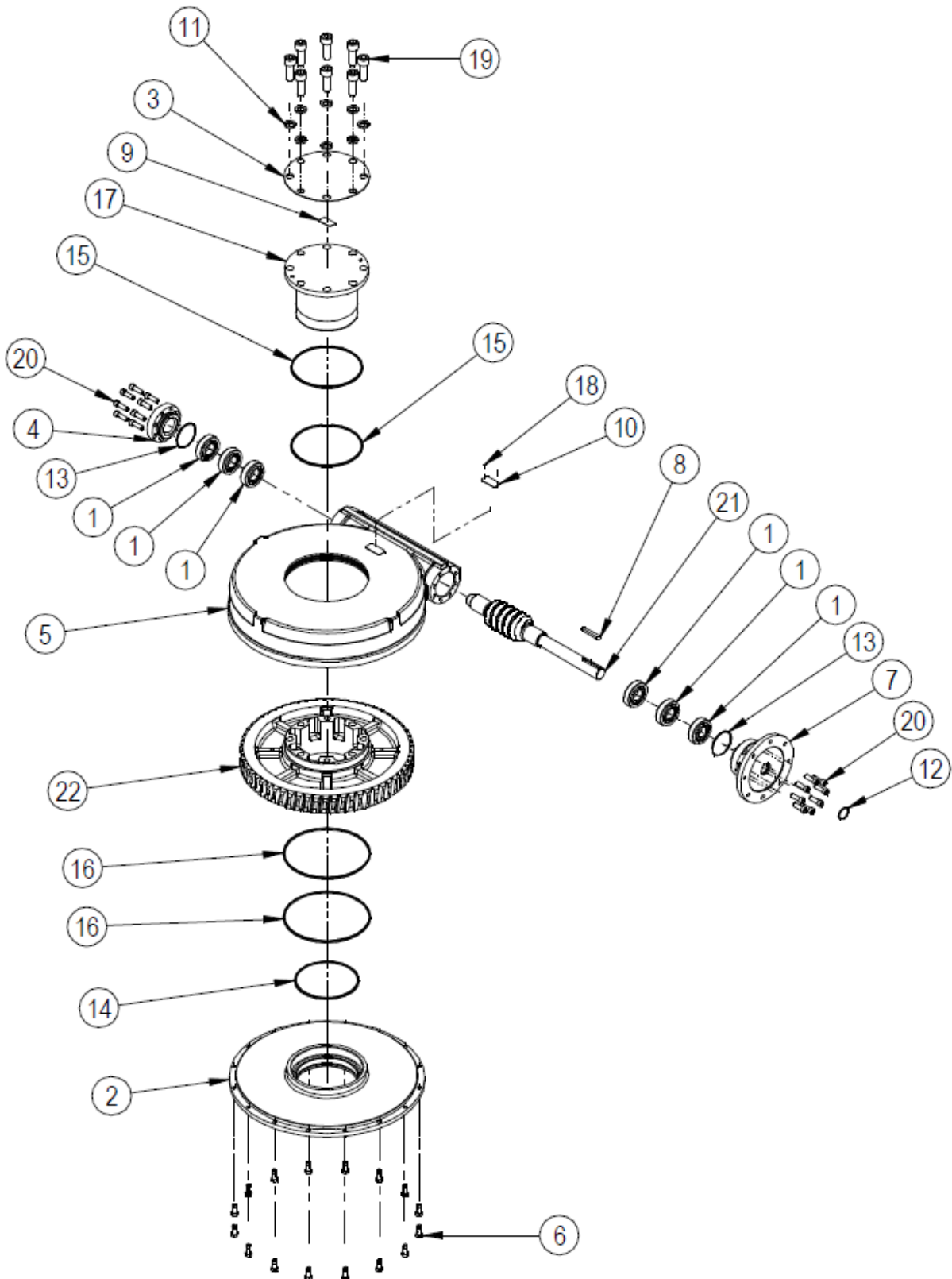


**SPARE PARTS LIST FOR MTW11 RANGE OF WORM GEAR ACTUATORS**



**EXPLODED VIEW FOR MTW11 GEARBOX OPERATIONS**

ITEM	DESCRIPTION	QUANTITY
*1	ANGULAR CONTACT BALL BEARING	6
2	BASEPLATE	1
3	INDICATOR PLATE	1
4	ENDCAP	1
5	GEARCASE	1
6	SCREW	16
7	INPUT FLANGE	1
8	KEY	1
9	LABEL	1
10	NAMEPLATE	1
11	WASHER	8
*12	O RING	1
*13	O RING	2
*14	O RING	1
*15	O RING	2
*16	O RING	2
17	OUTPUT SLEEVE	1
18	RIVET (STAINLESS NAMEPLATE ONLY)	2
19	SCREW	8
20	SCREW	16
21	WORMSHAFT	1
22	WORMWHEEL	1
23	GREASE	
24	SHIMS	

Note: Items marked \* are the recommended spares holding for 5 years operation

Special solid worm wheels do not have output sleeves and screws but do have the same gearbox rating