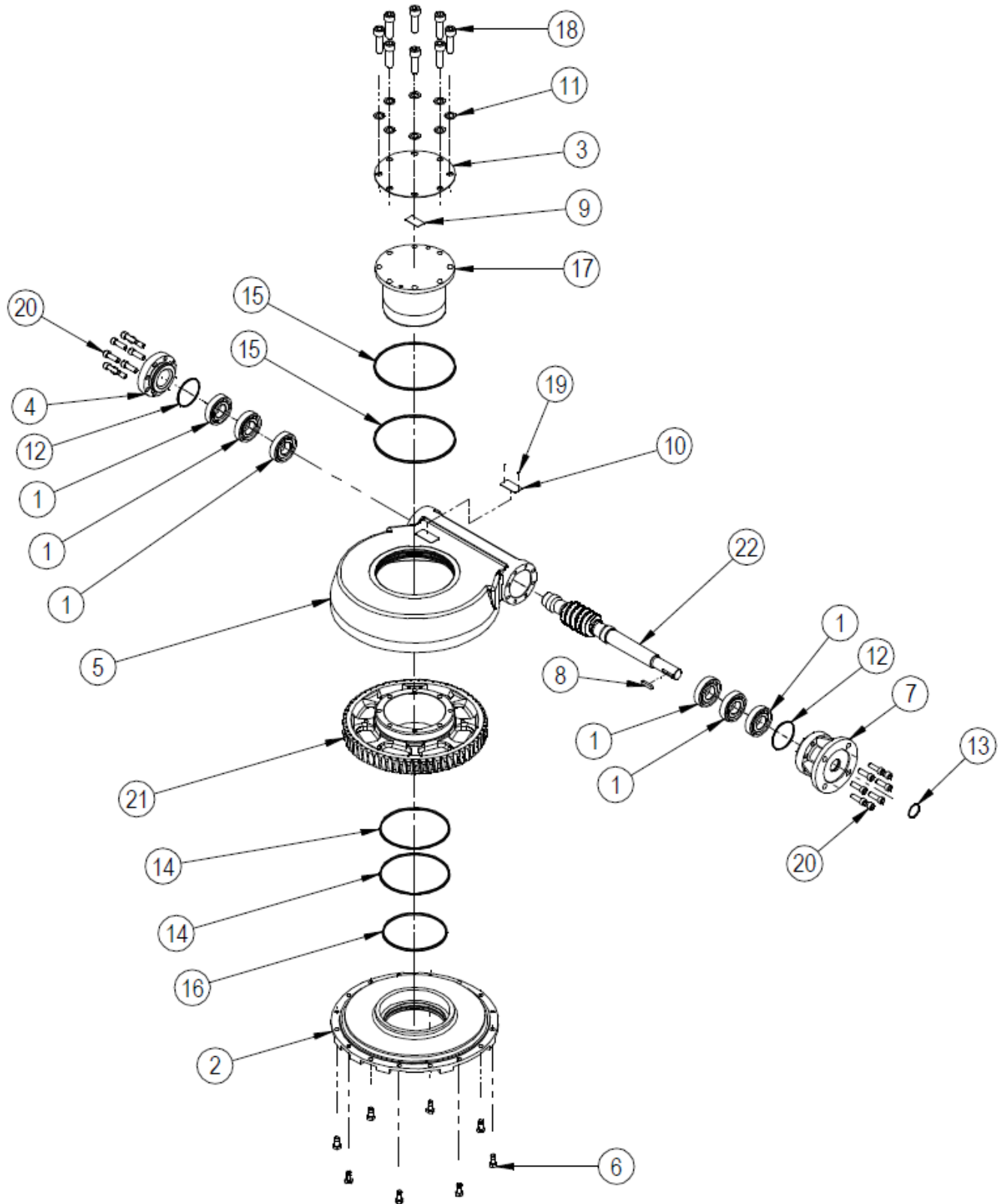


SPARE PARTS LIST FOR MTW10 RANGE OF WORM GEAR ACTUATORS



EXPLODED VIEW FOR MTW10 GEARBOX OPERATIONS

ITEM	DESCRIPTION	QUANTITY
*1	ANGULAR CONTACT BALL BEARING	6
2	BASEPLATE	1
3	INDICATOR PLATE	1
4	ENDCAP	1
5	GEARCASE	1
6	SCREW	8
7	INPUT FLANGE	1
8	KEY	1
9	LABEL	1
10	NAMEPLATE	1
11	WASHER	8
*12	O RING	2 (1 on IR units)
*13	O RING	1
*14	O RING	2
*15	O RING	2
*16	O RING	1
17	OUTPUT SLEEVE	1
18	SCREW	8
19	RIVET (STAINLESS NAMPLATE ONLY)	2
20	SCREW	16
21	WORMWHEEL	1
22	WORMSHAFT	1
23	GREASE	
24	SHIMS	

Note: Items marked * are the recommended spares holding for 5 years operation

Special solid worm wheels do not have output sleeves and screws but do have the same gearbox rating