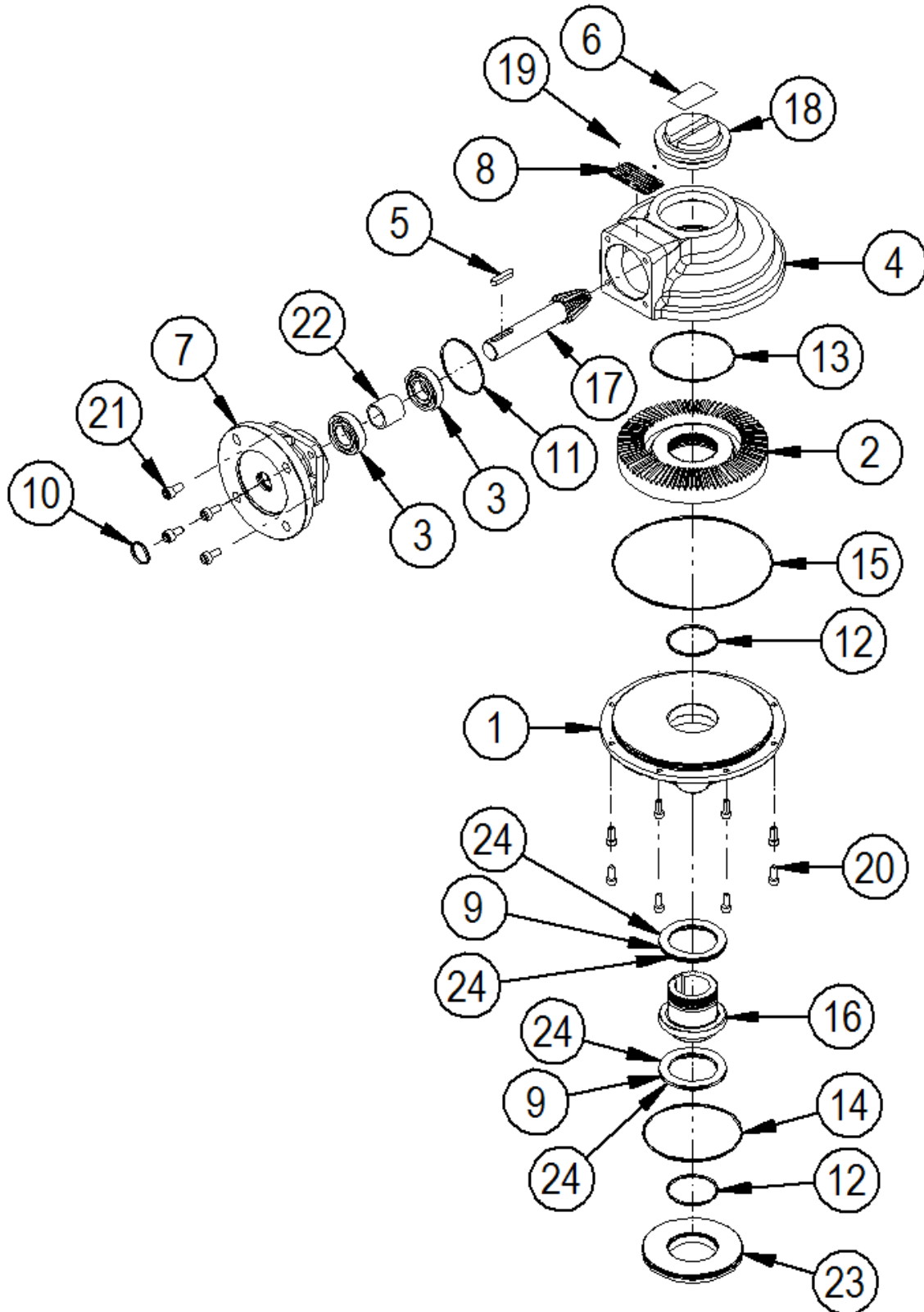


SPARE PARTS LIST FOR RANGE OF BEVEL GEAR OPERATORS



EXPLODED VIEW FOR BEVEL GEAR OPERATIONS

ITEM	DESCRIPTION	QUANTITY
1	BASEPLATE	1
2	BEVEL GEAR	1
*3	BALL BEARING/BUSH	2 for IB (1 for HOB4 to 14, 1 Bush for HOB3)
4	GEARCASE	1
5	KEY	1
6	LABEL	1
7	INPUT FLANGE	1
8	NAMEPLATE	1
*9	THRUST BEARING	2 (IB & HOB only)
*10	O-RING	1
*11	O-RING	1
*12	O-RING	2
*13	O-RING	1
*14	O-RING	1 (IB & HOB only)
*15	O-RING	1
16	OUTPUT SLEEVE	1 (IB & HOB only)
17	INPUT SHAFT	1
18	PLUG	1
19	RIVET (STAINLESS NAMPLATE ONLY)	2
20	SCREW	8
21	SCREW	4
22	SPACER	1 (IB only)
23	SPIGOT RING	1 (IB & HOB only)
*24	THRUST WASHER	4 (IB & HOB only)
25	GREASE	
26	ANTI-FRICTION COMPOUND	

Note: items marked * are the recommended spares holding for 5 years operation.