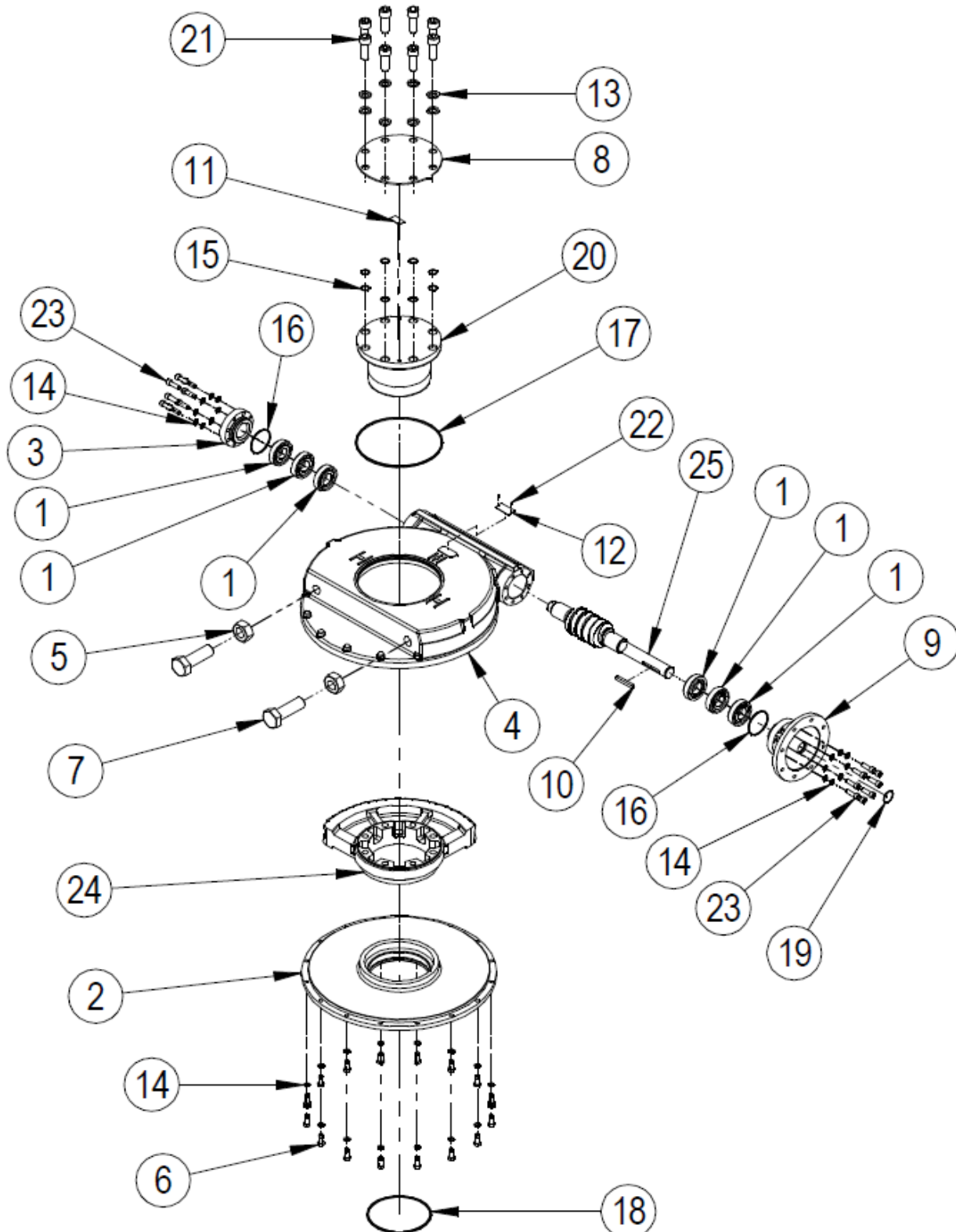


**SPARE PARTS LIST FOR IW115 WORM GEAR ACTUATORS**



**EXPLODED VIEW FOR IW115 GEARBOX OPERATIONS**

ITEM	DESCRIPTION	QUANTITY
*1	ANGULAR CONTACT BALL BEARING	6
2	BASEPLATE	1
*3	ENDCAP	1
4	GEARCASE	1
5	HEXAGON NUT	2
6	SCREW	16
7	SCREW	2
8	INDICATOR PLATE	1
9	INPUT FLANGE	1
10	KEY	1
11	LABEL	1
12	NAMEPLATE	1
13	WASHER	8
14	WASHER	32
*15	O RING	8
*16	O RING	2 (1 on IR units)
*17	O RING	1
*18	O RING	1
*19	O RING	1
20	OUTPUT SLEEVE	1
21	SCREW	8
22	RIVET (STAINLESS NAMPLATE ONLY)	2
23	SCREW	16
24	WORM QUADRANT	1
25	WORMSHAFT	1
26	GREASE	

Note: Items marked \* are the recommended spares holding for 5 years operation

Special solid worm wheels do not have output sleeves and screws but do have the same gearbox rating  
Confirm with Rotork for the correct number of item 16 needed.