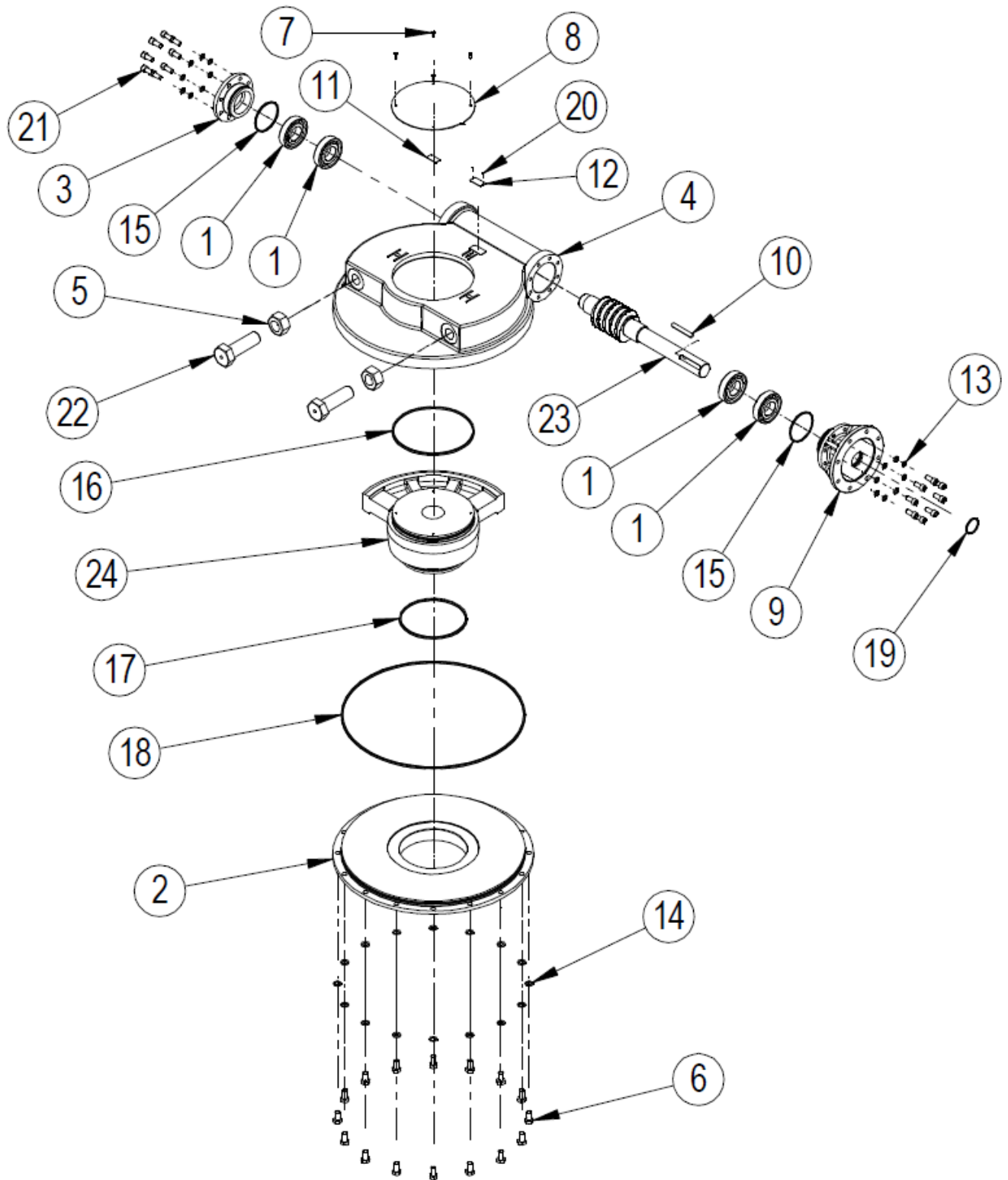


**SPARE PARTS LIST FOR IW/MOW 12 AND 13 RANGE OF WORM GEAR ACTUATORS**



**EXPLODED VIEW FOR IW/MOW 12 AND 13 GEARBOX OPERATIONS**

ITEM	DESCRIPTION	QUANTITY
*1	ANGULAR CONTACT BALL BEARING	4
2	BASEPLATE	1
3	ENDCAP	1
4	GEARCASE	1
5	HEXAGON NUT	2
6	SCREW	16
7	SCREW	4
8	INDICATOR PLATE	1
9	INPUT FLANGE	1
10	KEY	1
11	LABEL	1
12	NAMEPLATE	1
13	WASHER	16
14	WASHER	16
*15	O RING	2
*16	O RING	1
*17	O RING	1
*18	O RING	1
*19	O RING	1
20	RIVET	2
21	SCREW	16
22	SCREW	2
23	WORMSHAFT	1
24	QUADRANT	1
25	GREASE	
26	SHIMS	(MOW)

Note: Items marked \* are the recommended spares holding for 5 years operation

Special solid worm wheels do not have output sleeves and screws but do have the same gearbox rating