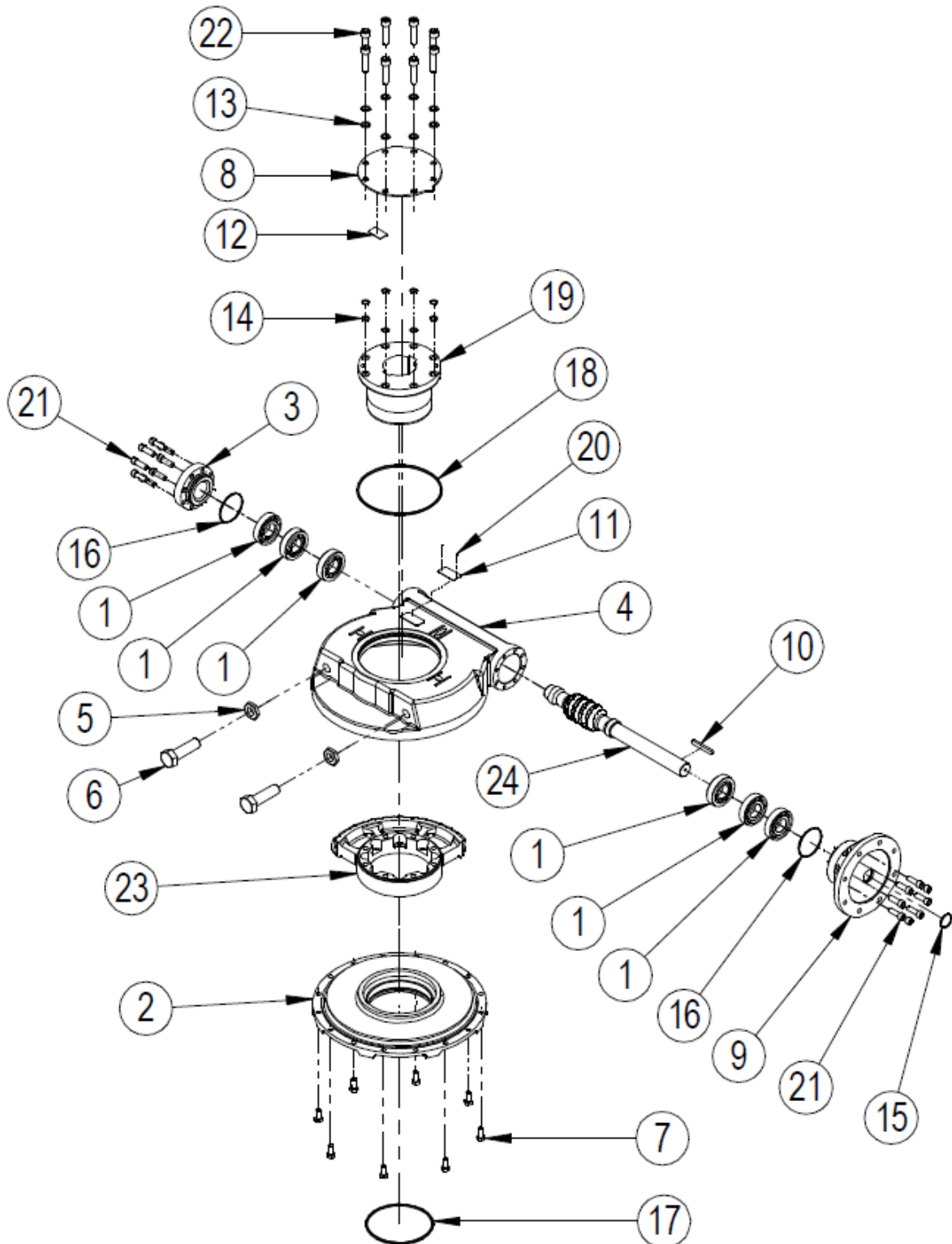


SPARE PARTS LIST FOR IW/MOW 9-11 RANGE OF WORM GEAR ACTUATORS



EXPLODED VIEW FOR IW/MOW 9 - 11 GEARBOX OPERATIONS

ITEM	DESCRIPTION	QUANTITY
*1	ANGULAR CONTACT BALL BEARING	6
2	BASEPLATE	1
3	ENDCAP	1
4	GEARCASE	1
5	HEXAGON NUT	2
6	SCREW	2
7	SCREW	8
8	INDICATOR PLATE	1
9	INPUT FLANGE	1
10	KEY	1
11	NAMEPLATE	1
12	LABEL	1
13	WASHER	8
*14	O RING	8
*15	O RING	1
*16	O RING	2 (1 on IR units)
*17	O RING	1
*18	O RING	1
19	OUTPUT SLEEVE	1
20	RIVET (STAINLESS NAMPLATE ONLY)	2
21	SCREW	16
22	SCREW	8
23	WORM QUADRANT	1
24	WORM SHAFT	1
25	GREASE	
26	SHIMS	(MOW)

Note: Items marked * are the recommended spares holding for 5 years operation

Special solid worm wheels do not have output sleeves and screws but do have the same gearbox rating
Confirm with Rotork for the correct number of item 16 needed.