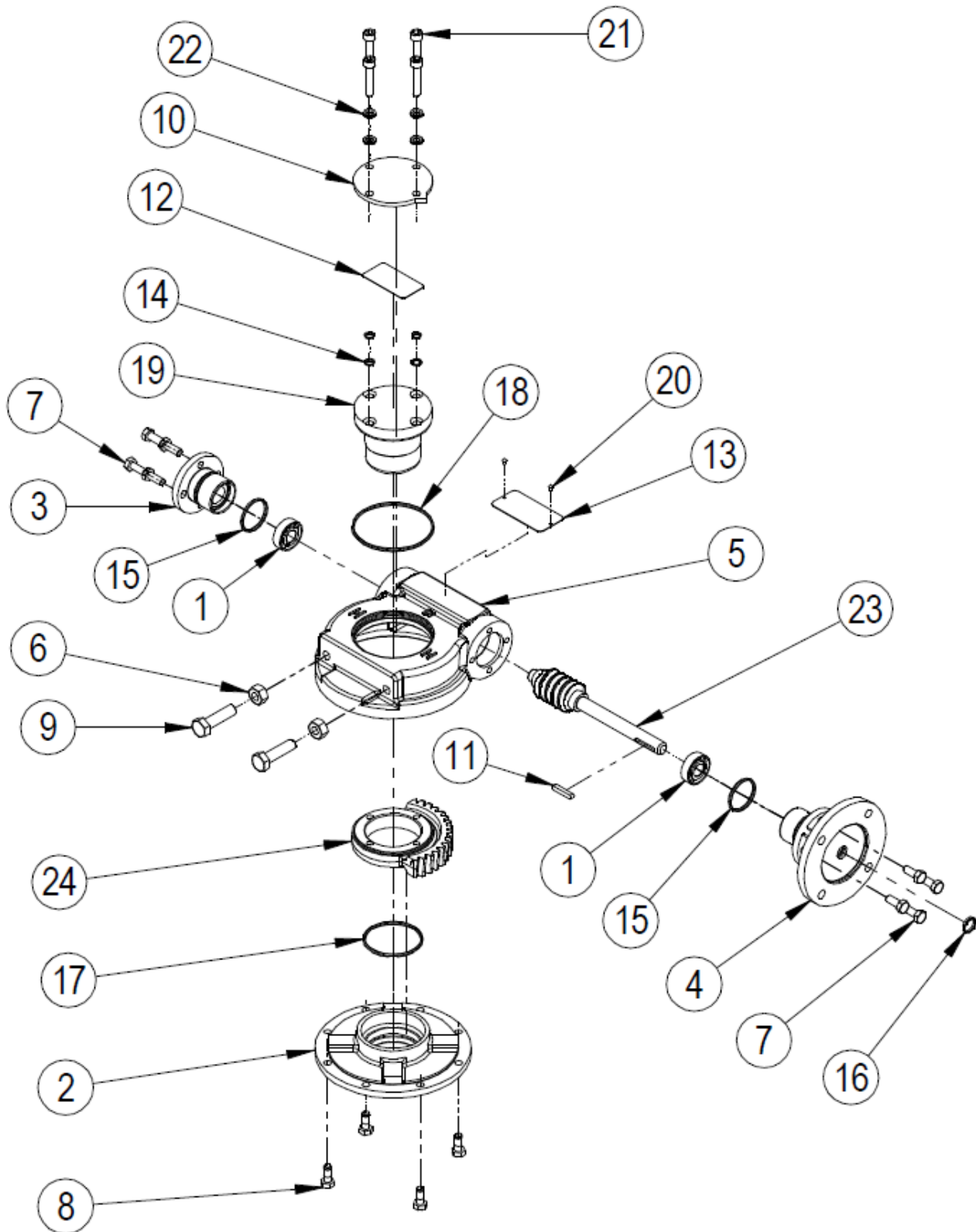


**SPARE PARTS LIST FOR IW/MOW 3 RANGE OF WORM GEAR ACTUATORS**



**EXPLODED VIEW FOR IW/MOW 3 GEARBOX OPERATIONS**

ITEM	DESCRIPTION	QUANTITY
*1	ANGULAR CONTACT BALL BEARING	2
2	BASEPLATE	1
3	ENDCAP	1
4	INPUT FLANGE	1
5	GEARCASE	1
6	HEXAGON NUT	2
7	SCREW	8
8	SCREW	4
9	SCREW	2
10	INDICATOR PLATE	1
11	KEY	1
12	LABEL	1
13	NAMEPLATE	1
*14	O RING	4 (8 for HT units)
*15	O RING	2
*16	O RING	1
*17	O RING	1
*18	O RING	1
19	OUTPUT SLEEVE	1
20	RIVET (FOR STAINLESS NAMPLATES)	2
21	SCREW	4 (8 for HT units)
22	WASHER	4 (8 for HT units)
23	WORM SHAFT	1
24	WORM WHEEL	1
25	GREASE	
26	SHIMS	(MOW)

Note: Items marked \* are the recommended spares holding for 5 years operation

Special solid worm wheels do not have output sleeves and screws but do have the same gearbox rating