

RCE4 Switch Box

Instruction

For RC210 - 280, RC88 and RCG90 - 100

1. Place the actuator in "closed valve position". If the actuator is of DA type, it closes with the aid of compressed air connected to the left connection port. An SR actuator of normal "Fail Close" type closes by venting.
2. Fasten the console to the E4 base plate (8) with 2 pcs M6 screws according to drawing No. 106893A.
3. Dismantle the cover (50) on the switch box with the screw (1). Twist the cover and lift it straight up when the screw is loosened.
4. Mount the E4 shaft through the hole in the E4 base plate. The shaft journal must go through the oil bronze bearings (23) and (21). Turn the E4 shaft so that it aligns with the groove on the shaft journal.
5. Mount the E4 and console with the shaft in the groove on the top side of the actuator stem.
6. Fasten the console with 4 pcs screws to the upper side of the actuator and centre the units with each other before tightening the screws.
7. Slide the two cams (24) over the shaft with the washers (35) between them. Refer to drawing No. 106893A how the cams should be turned.
8. Adjustment of the lower switch (12) indicating "closed valve position":
Turn the lower cam (24) clockwise so that the operating arm of the switch is effected. When a clicking noise is heard, the cam must be locked with socket screw (46).
9. Adjustment of the upper switch indicating "open valve position":
An actuator of DA type opens with the aid of compressed air connected to the right connection port. An SR actuator of normal "Fail Close" type opens with the aid of compressed air connected to the left connection port. The key handle on the shaft journal will now align with actuator longitude side. Turn the upper cam anticlockwise so that the operating arm of the switch is effected. When a clicking noise is heard, the cam must be locked with socket screw (46).
10. Fit suitable cable gland. If you want to connect the solenoid valve to the switch box, suitable cable gland must be fitted.
11. Connect cable inlets according to connection diagram (45) attached to the inside of the switch box cover.
12. Put the cover back on the switch box and tighten with screw (1). Tightening torque 1,5 Nm.

www.remotecontrol.se



Remote Control Sweden
Tel +46 (0)23 587 00
Fax +46 (0)23 587 45
www.remotecontrol.se
info@remotecontrol.se



Remote Control
Tel +49 (0)2131 795 760
Fax +49 (0)2131 795 7615
www.remotecontrol.de
info@remotecontrol.de



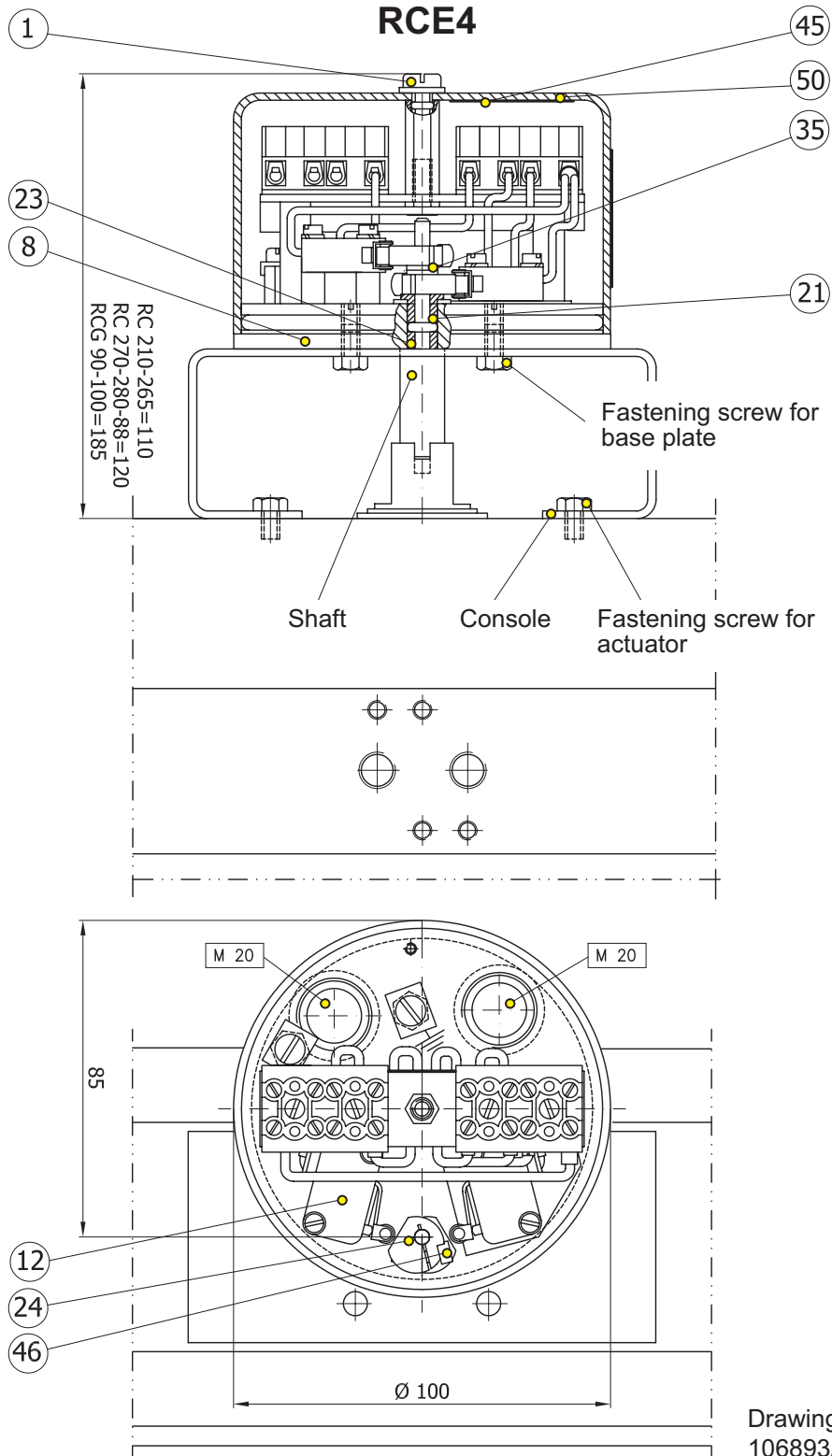
Remote Control Ltd
Tel +44 (0)1889 576 888
Fax +44 (0)1889 577 676
www.remotecontrol.co.uk
info@remotecontrol.co.uk



Remote Control Asia
Tel +65 6848 7150
Fax +65 6746 5815
www.remotecontrol.com.sg
info@remotecontrol.com.sg



Remote Control Inc
Tel +1 (0)401 294 1400
Fax +1 (0)401 294 3388
www.rcactuators.com
info@remotecontrol.us



Drawing No
106893A

We reserve the right to make changes without notice.

Ref No 553C / Art No 980553

www.remotecontrol.se



Remote Control Sweden
Box 80
Kontrollvägen 15
SE-791 22 Falun
Sweden
Tel +46 (0)23 587 00
Fax +46 (0)23 587 45
www.remotecontrol.se
info@remotecontrol.se



Remote Control
Gutenbergstr. 22
DE-41564 Kaarst-Büttgen
Germany
Tel +49 (0)2131 795 760
Fax +49 (0)2131 795 7615
www.remotecontrol.de
info@remotecontrol.de



Remote Control Ltd
Unit 40, Trent Valley Works
Station Road, Rugeley
Staffordshire WS15 3HB
England
Tel +44 (0)1889 576 888
Fax +44 (0)1889 577 676
www.remotecontrol.co.uk
info@remotecontrol.co.uk



Remote Control Asia
No. 9, Kaki Bukit Road 1
#03-03, Eunos Technolink
Singapore 415938
Tel +65 6848 7150
Fax +65 6746 5815
www.remotecontrol.com.sg
info@remotecontrol.com.sg



Remote Control Inc
PO Box 355
386 Dry Bridge Rd
North Kingstown, RI 02852
USA
Tel +1 (0)401 294 1400
Fax +1 (0)401 294 3388
www.rciactuators.com
info@remotecontrol.us