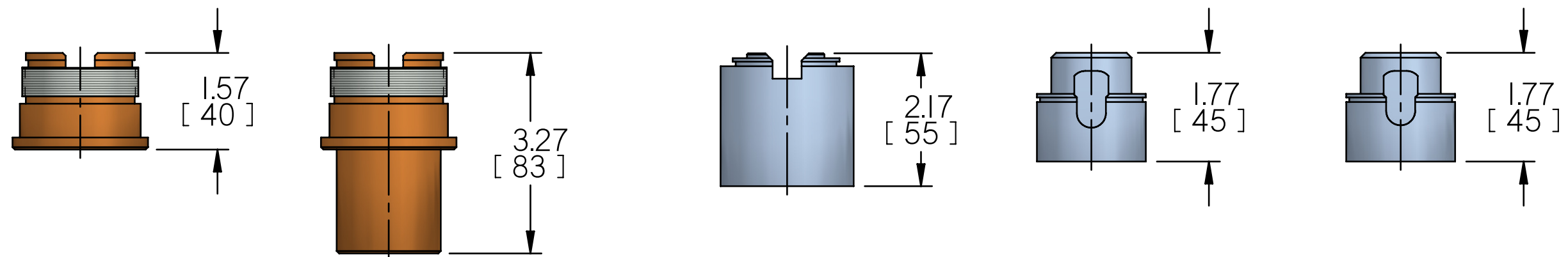
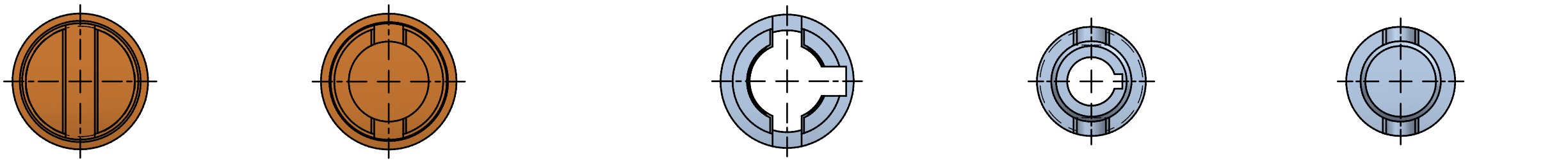
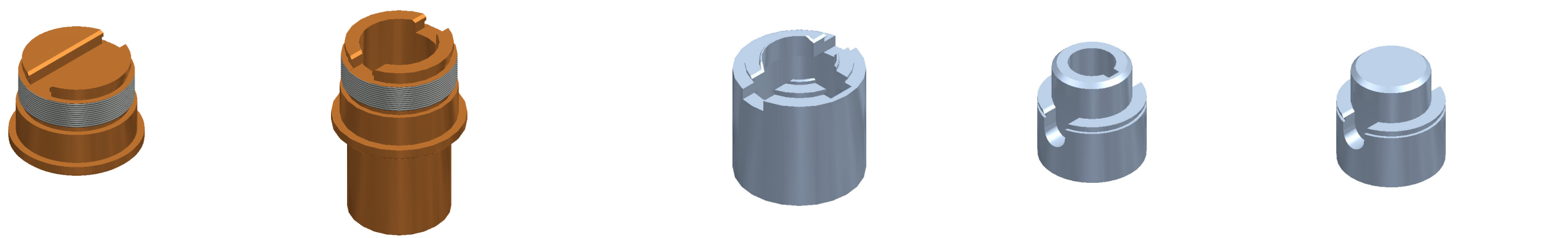


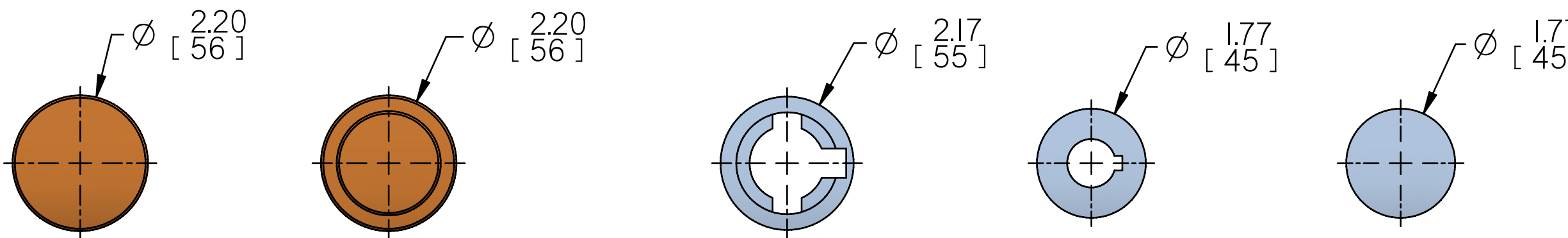
IQ Sizes:  
10, 12, 18

AWT Sizes:  
10A, 12A, 18A

B



A



'A' TYPE

'Z3' TYPE

'BI' TYPE

'B3' TYPE

'B4' TYPE

01	071609	RAR	First Issue.
Issue	Date	Initials	Modification Details

**rotork**  
Rotork Controls Inc  
Rochester, NY 14624  
Telephone (585) 247-2304  
Fax (585) 247-2308  
http://www.rotork.com

Title IQmk2 DRIVE BUSHING ID CHART		
Drawn R.RIOCH	Checked MT	Date 07/16/2009
Material & Spec. —		
Treatment —		

MANUFACTURING DIMENSIONS SPECIFIED IN INCHES.  
UNSPECIFIED DIMENSIONAL TOLERANCES:-  
MACHINED(.XX) = ±.010", MACHINED(.XXX) = ±.005", CAST = ±1/32", ANGULAR = ±1/2°  
UNSPECIFIED MACHINED RADII = 1/32" MAXIMUM.  
SURFACE FINISH INDICATED IN MICROMETERS.  
DIMENSIONING AND TOLERANCING IN ACCORDANCE WITH ASME Y14.5M-1994  
THREAD TOLERANCES- METRIC TO BS3643 CLASS 6H+6g, UNIFIED TO BS1580 CLASS 2A+2B.  
PART NUMBER TO BE PERMANENTLY MARKED ONTO COMPONENT AT POSITION MARKED THUS:- ☒  
REMOVE ALL BURRS AND SHARP EDGES.

Projection 	Scale DNS	<b>Do Not Scale</b>	PRE-PRODUCTION ISSUE INDICATED WITH LETTER. PRODUCTION ISSUE INDICATED WITH NUMERAL
B	Part Number DOC1683	Issue No 01	Sheet No 1 of 6

1

2

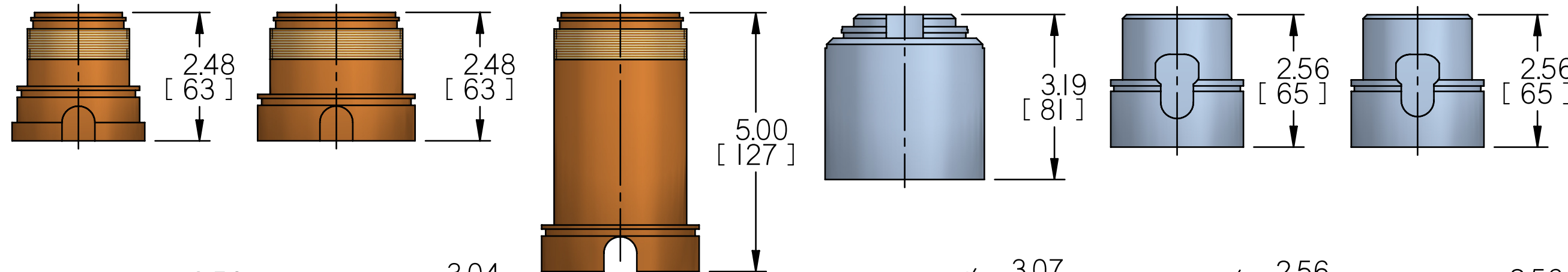
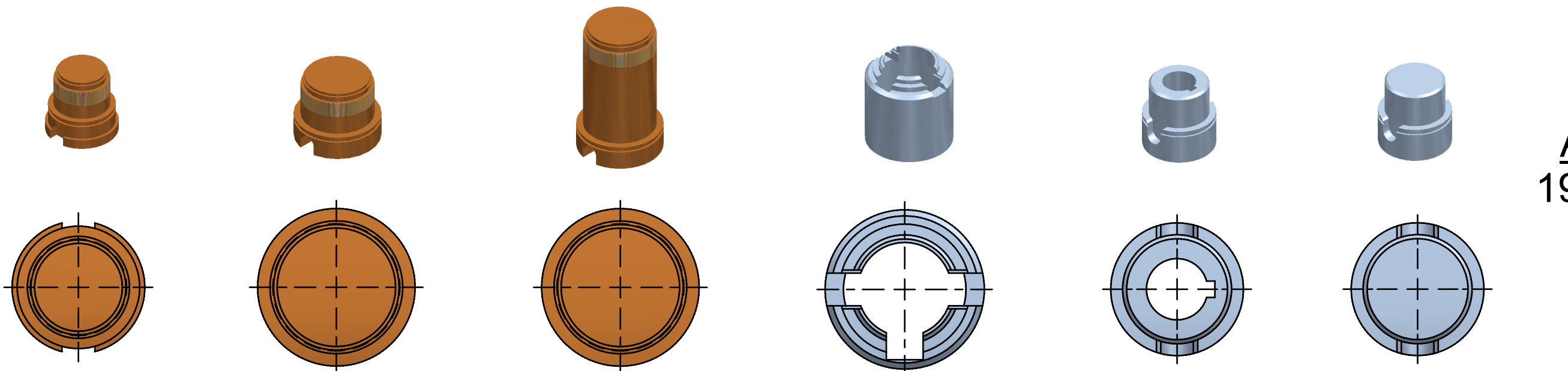
3

4

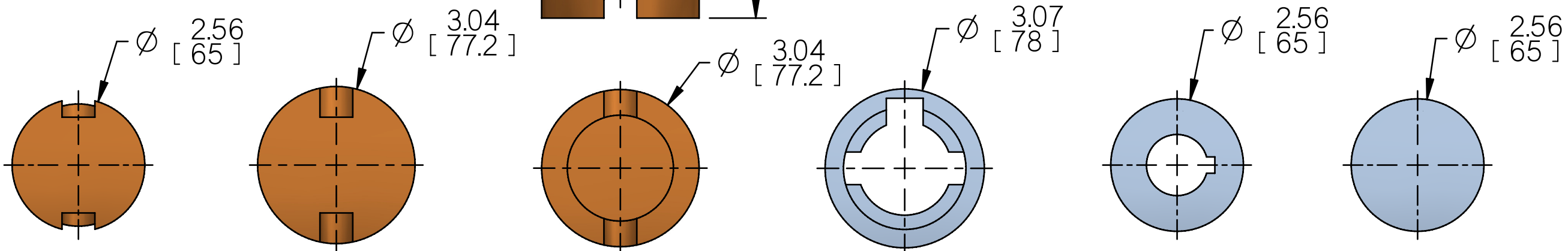
IQ Sizes:  
20, 25

AWT Sizes:  
19A, 20A, 25A

B



A



'A' TYPE

'Z' TYPE

'Z3' TYPE

'BI' TYPE

'B3' TYPE

'B4' TYPE

01 Issue	071609 Date	RAR Initials	First Issue. Modification Details
-------------	----------------	-----------------	--------------------------------------

**rotork**  
Rotork Controls Inc  
Rochester, NY 14624  
Telephone (585) 247-2304  
Fax (585) 247-2308  
<http://www.rotork.com>

Title IQmk2 DRIVE BUSHING ID CHART		
Drawn R.RIOCH	Checked MT	Date 07/16/2009
Material & Spec. —		
Treatment —		

MANUFACTURING DIMENSIONS SPECIFIED IN INCHES.  
UNSPECIFIED DIMENSIONAL TOLERANCES:-  
MACHINED(.XX) = ±.010", MACHINED(.XXX) = ±.005", CAST = ±1/32", ANGULAR = ±1/2°  
UNSPECIFIED MACHINED RADII = 1/32" MAXIMUM.  
SURFACE FINISH INDICATED IN MICROMETERS.  
DIMENSIONING AND TOLERANCING IN ACCORDANCE WITH ASME Y14.5M-1994  
THREAD TOLERANCES- METRIC TO BS3643 CLASS 6H+6g, UNIFIED TO BS1580 CLASS 2A+2B.  
PART NUMBER TO BE PERMANENTLY MARKED ONTO COMPONENT AT POSITION MARKED THUS:- ☒  
REMOVE ALL BURRS AND SHARP EDGES.

Projection 	Scale DNS	Do Not Scale	PRE-PRODUCTION ISSUE INDICATED WITH LETTER. PRODUCTION ISSUE INDICATED WITH NUMERAL
B	Part Number DOC1683	Issue No 01	Sheet No 2 of 6

1

2

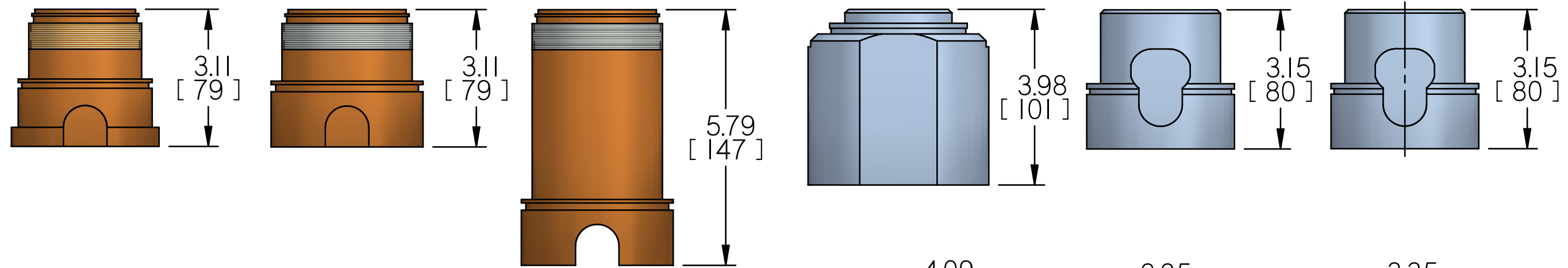
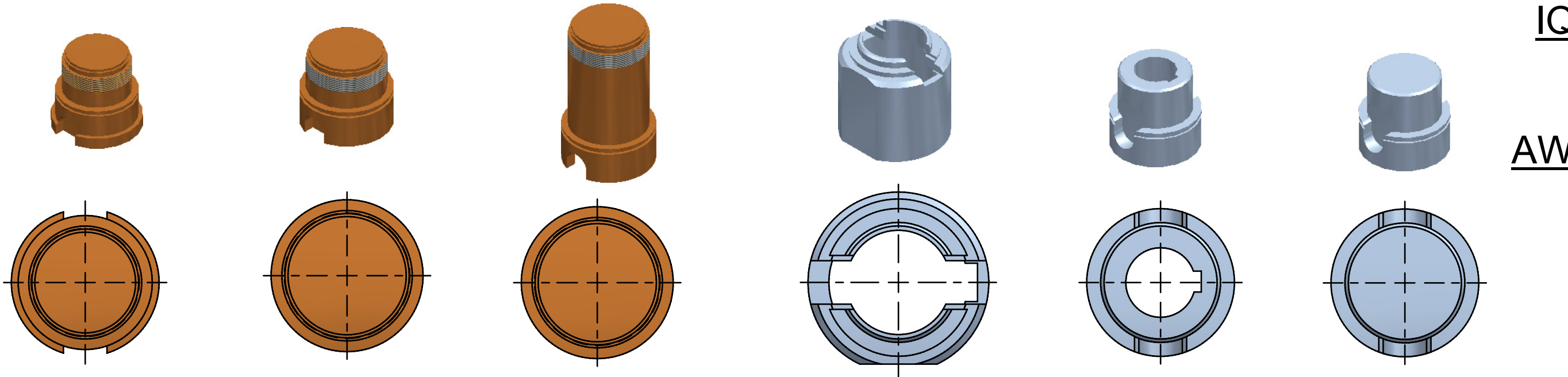
3

4

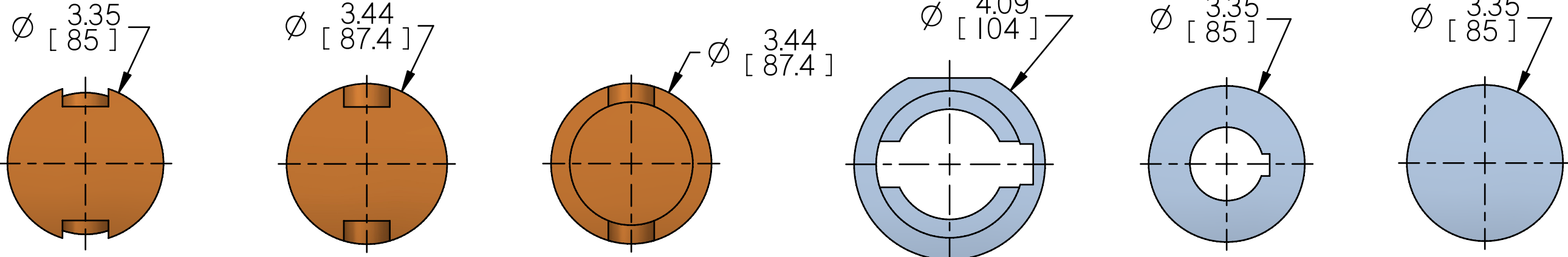
IQ Sizes:  
35

AWT Sizes:  
35A

B



A



'A' TYPE

'Z' TYPE

'Z3' TYPE

'BI' TYPE

'B3' TYPE

'B4' TYPE

01	071609	RAR	First Issue.
Issue	Date	Initials	Modification Details

**rotork**  
Rotork Controls Inc  
Rochester, NY 14624  
Telephone (585) 247-2304  
Fax (585) 247-2308  
http://www.rotork.com

Title IQmk2 DRIVE BUSHING ID CHART		
Drawn R.RIOCH	Checked MT	Date 07/16/2009
Material & Spec. —		
Treatment —		

MANUFACTURING DIMENSIONS SPECIFIED IN INCHES.  
UNSPECIFIED DIMENSIONAL TOLERANCES:-  
MACHINED(.XX) = ±.010", MACHINED(.XXX) = ±.005", CAST = ±1/32", ANGULAR = ±1/2°  
UNSPECIFIED MACHINED RADII = 1/32" MAXIMUM.  
SURFACE FINISH INDICATED IN MICROMETERS.  
DIMENSIONING AND TOLERANCING IN ACCORDANCE WITH ASME Y14.5M-1994  
THREAD TOLERANCES- METRIC TO BS3643 CLASS 6H+6g, UNIFIED TO BS1580 CLASS 2A+2B.  
PART NUMBER TO BE PERMANENTLY MARKED ONTO COMPONENT AT POSITION MARKED THUS:- ☒  
REMOVE ALL BURRS AND SHARP EDGES.

Projection B	Scale DNS	Do Not Scale	PRE-PRODUCTION ISSUE INDICATED WITH LETTER. PRODUCTION ISSUE INDICATED WITH NUMERAL
Part Number DOC1683		Issue No 01	Sheet No 3 of 6

1

2

3

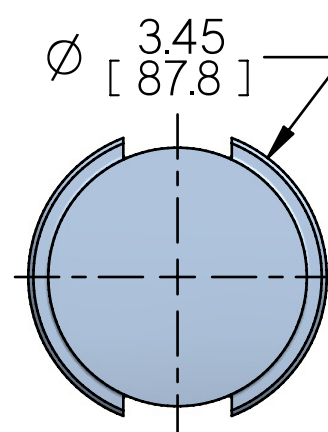
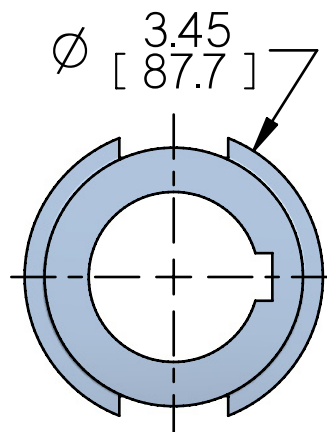
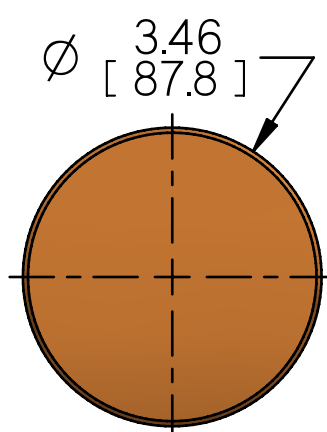
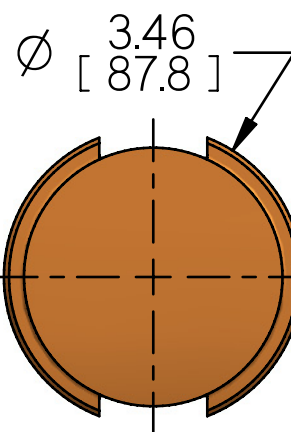
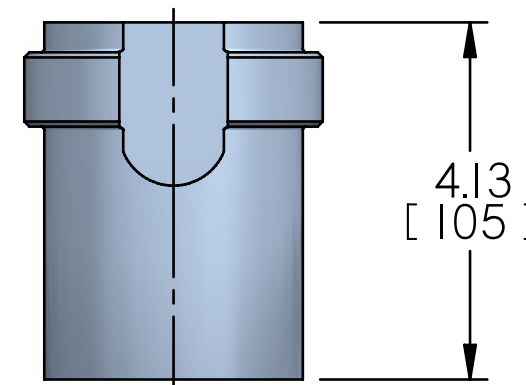
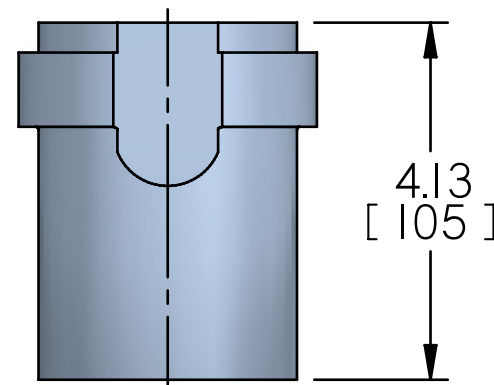
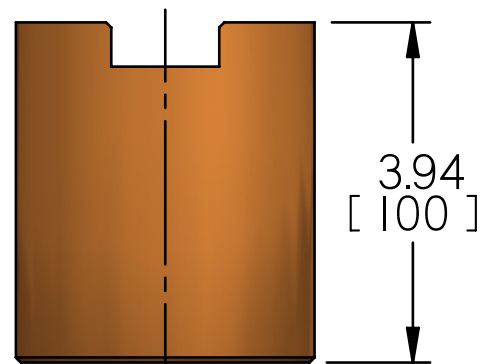
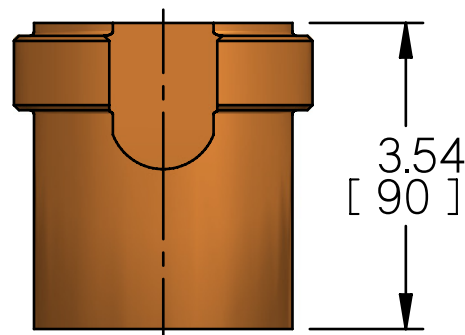
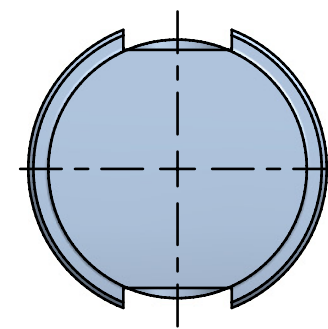
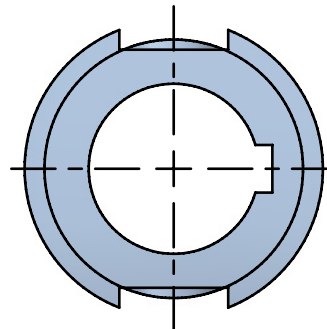
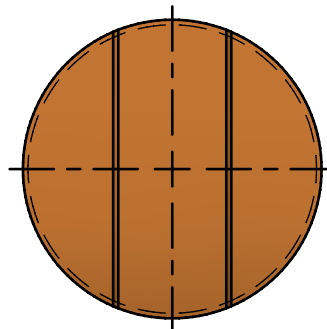
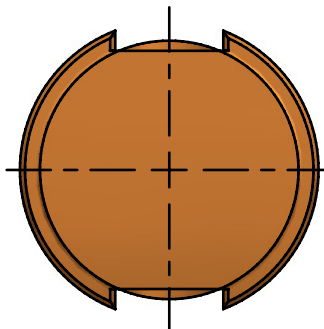
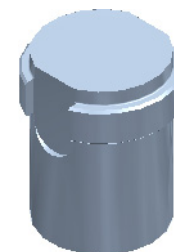
4

IQ Size:  
40

A-Range Size:  
40A

B

A



'A' TYPE

'73' TYPE

'B3' TYPE

'B4' TYPE

01	071609	RAR	First Issue.
Issue	Date	Initials	Modification Details

**rotork**  
Rotork Controls Inc  
Rochester, NY 14624  
Telephone (585) 247-2304  
Fax (585) 247-2308  
http://www.rotork.com

Title IQmk2 DRIVE BUSHING ID CHART		
Drawn R.RIOCH	Checked MT	Date 07/16/2009
Material & Spec. —		
Treatment —		

MANUFACTURING DIMENSIONS SPECIFIED IN INCHES.  
UNSPECIFIED DIMENSIONAL TOLERANCES:-  
MACHINED(.XX) = ±.010", MACHINED(.XXX) = ±.005", CAST = ±1/32", ANGULAR = ±1/2°  
UNSPECIFIED MACHINED RADII = 1/32" MAXIMUM.  
SURFACE FINISH INDICATED IN MICROMETERS.  
DIMENSIONING AND TOLERANCING IN ACCORDANCE WITH ASME Y14.5M-1994  
THREAD TOLERANCES- METRIC TO BS3643 CLASS 6H+6g, UNIFIED TO BS1580 CLASS 2A+2B.  
PART NUMBER TO BE PERMANENTLY MARKED ONTO COMPONENT AT POSITION MARKED THUS:- ☒  
REMOVE ALL BURRS AND SHARP EDGES.

Projection 	Scale DNS	<b>Do Not Scale</b>	PRE-PRODUCTION ISSUE INDICATED WITH LETTER. PRODUCTION ISSUE INDICATED WITH NUMERAL
B	Part Number DOC1683	Issue No 01	Sheet No 4 of 6

1

2

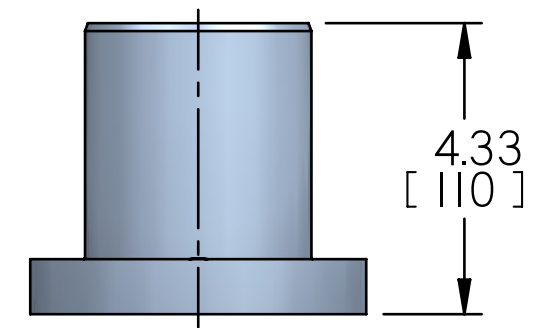
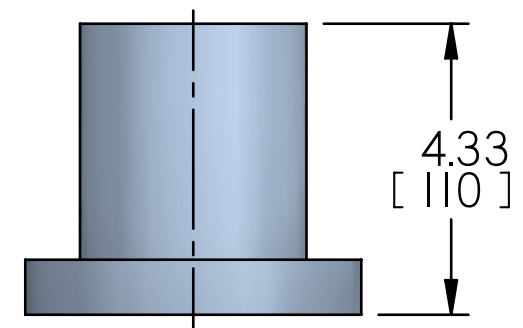
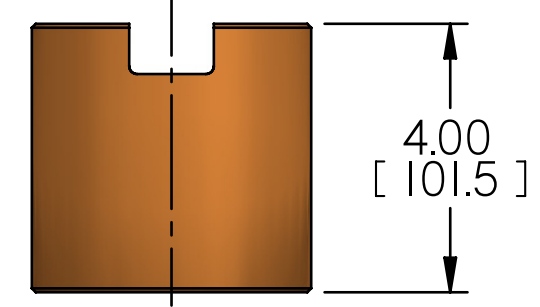
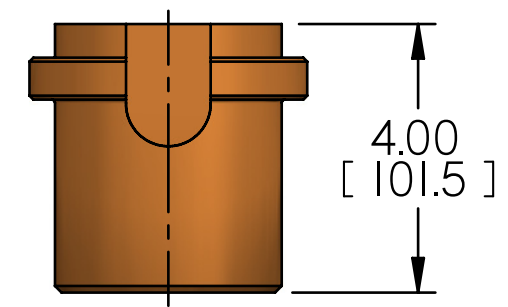
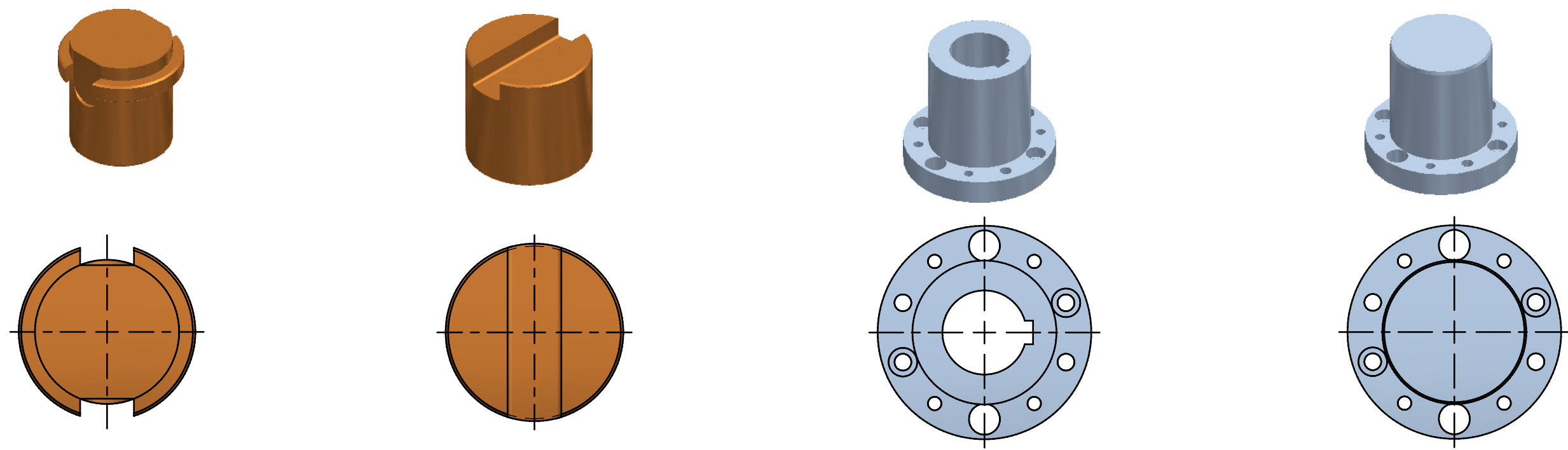
3

4

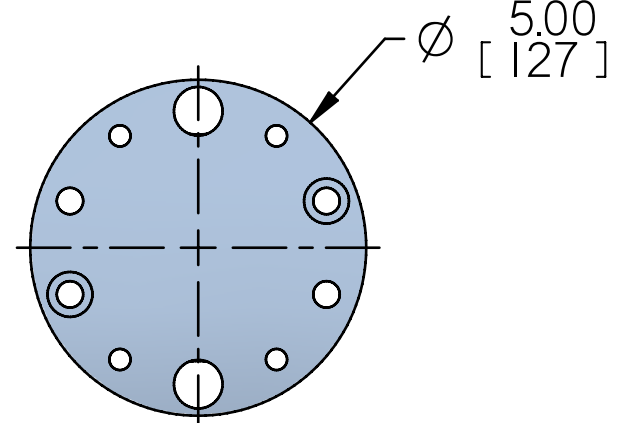
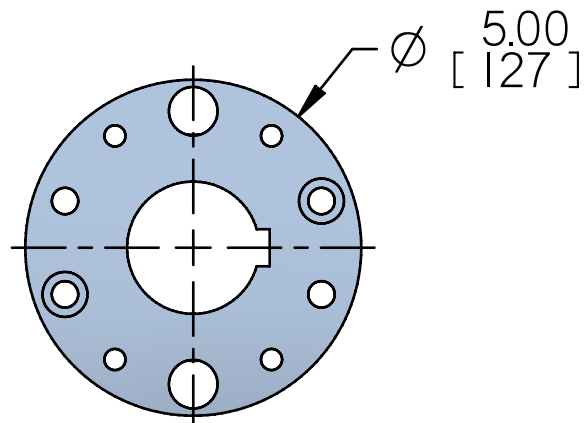
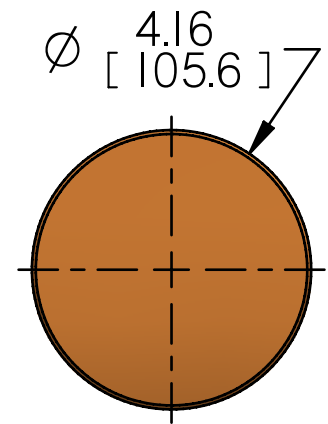
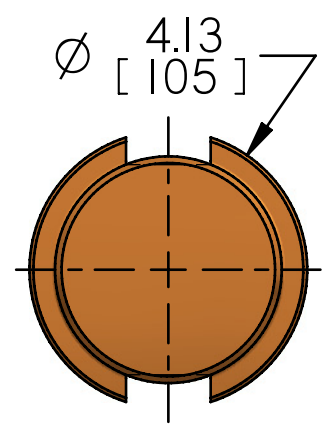
IQ Sizes:  
70, 90, 91, 95

A-Range Sizes:  
70, 90, 91, 95

B



A



'A' TYPE

'Z3' TYPE

'B3' TYPE

'B4' TYPE

01	071609	RAR	First Issue.
Issue	Date	Initials	Modification Details

**rotork**  
Rotork Controls Inc  
Rochester, NY 14624  
Telephone (585) 247-2304  
Fax (585) 247-2308  
http://www.rotork.com

Title IQmk2 DRIVE BUSHING ID CHART		
Drawn R.RIOCH	Checked MT	Date 07/16/2009
Material & Spec.	—	
Treatment	—	

MANUFACTURING DIMENSIONS SPECIFIED IN INCHES.  
UNSPECIFIED DIMENSIONAL TOLERANCES:-  
MACHINED(.XX) = ±.010", MACHINED(.XXX) = ±.005", CAST = ±1/32", ANGULAR = ±1/2°  
UNSPECIFIED MACHINED RADII = 1/32" MAXIMUM.  
SURFACE FINISH INDICATED IN MICROMETERS.  
DIMENSIONING AND TOLERANCING IN ACCORDANCE WITH ASME Y14.5M-1994  
THREAD TOLERANCES- METRIC TO BS3643 CLASS 6H+6g, UNIFIED TO BS1580 CLASS 2A+2B.  
PART NUMBER TO BE PERMANENTLY MARKED ONTO COMPONENT AT POSITION MARKED THUS:- ☒  
REMOVE ALL BURRS AND SHARP EDGES.

Projection 	Scale DNS	<b>Do Not Scale</b>	PRE-PRODUCTION ISSUE INDICATED WITH LETTER. PRODUCTION ISSUE INDICATED WITH NUMERAL
B	Part Number DOC1683	Issue No 01	Sheet No 5 of 6

1

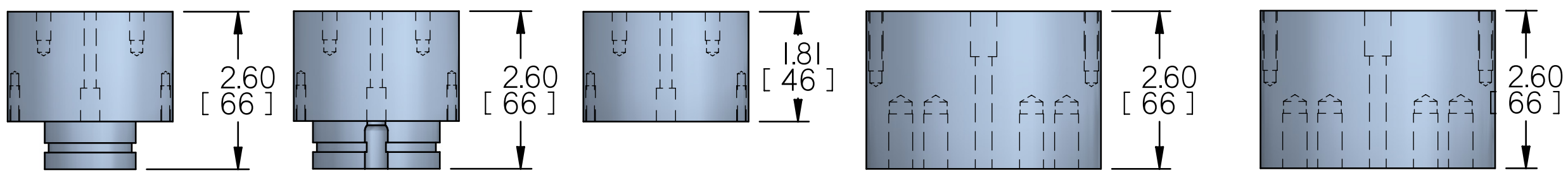
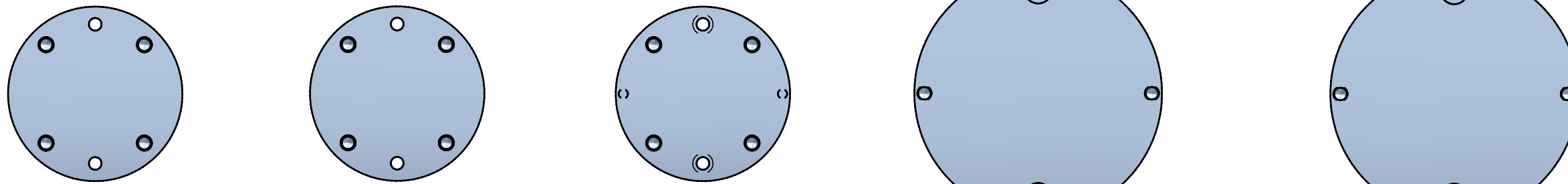
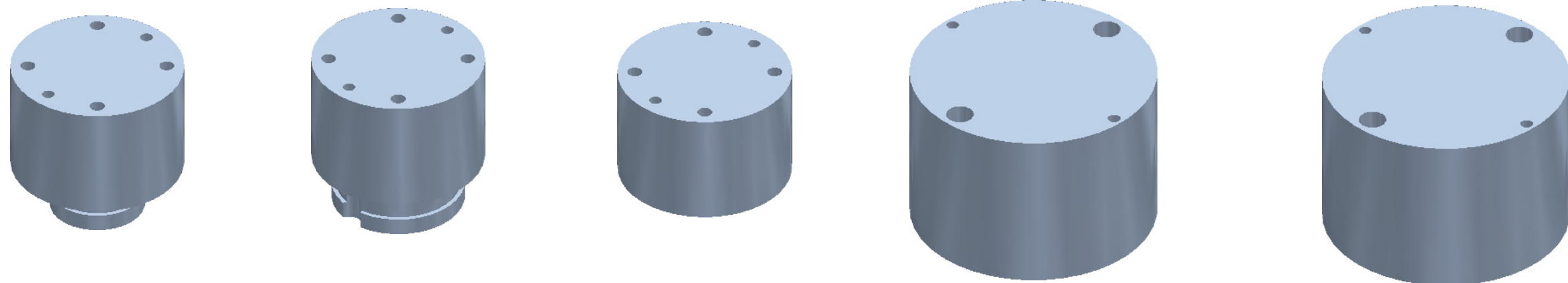
2

3

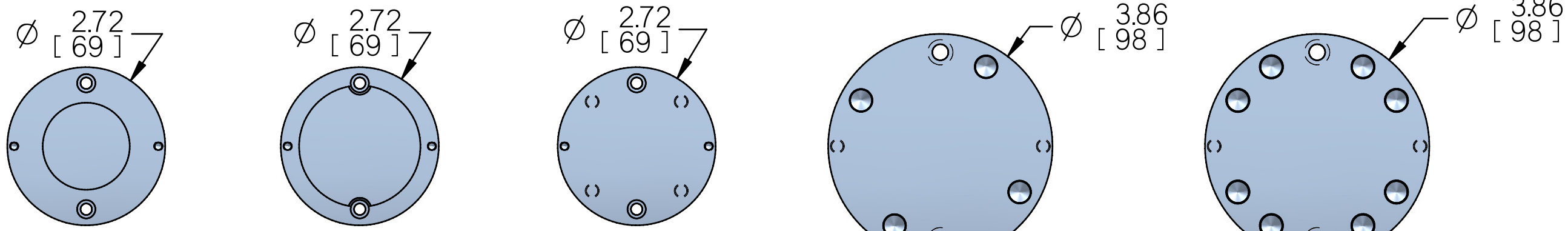
4

**IQT Sizes:**  
125,250,500  
1000,2000

B



A



F05 / FA05

F07 / FA07

F10 / FA10

F12 / FA12

F14 / FA14

01	071609	RAR	First Issue.
Issue	Date	Initials	Modification Details

**rotork**  
Rotork Controls Inc  
Rochester, NY 14624  
Telephone (585) 247-2304  
Fax (585) 247-2308  
<http://www.rotork.com>

Title IQmk2 DRIVE BUSHING ID CHART		
Drawn R.RIOCH	Checked MT	Date 07/16/2009
Material & Spec. —		
Treatment —		

MANUFACTURING DIMENSIONS SPECIFIED IN INCHES.  
UNSPECIFIED DIMENSIONAL TOLERANCES:-  
MACHINED(.XX) = ±.010", MACHINED(.XXX) = ±.005", CAST = ±1/32", ANGULAR = ±1/2°  
UNSPECIFIED MACHINED RADII = 1/32" MAXIMUM.  
SURFACE FINISH INDICATED IN MICROMETERS.  
DIMENSIONING AND TOLERANCING IN ACCORDANCE WITH ASME Y14.5M-1994  
THREAD TOLERANCES- METRIC TO BS3643 CLASS 6H+6g, UNIFIED TO BS1580 CLASS 2A+2B.  
PART NUMBER TO BE PERMANENTLY MARKED ONTO COMPONENT AT POSITION MARKED THUS:- ☒  
REMOVE ALL BURRS AND SHARP EDGES.

Projection 	Scale DNS	<b>Do Not Scale</b>	PRE-PRODUCTION ISSUE INDICATED WITH LETTER. PRODUCTION ISSUE INDICATED WITH NUMERAL
B	Part Number DOC1683	Issue No 01	Sheet No 6 of 6

1

2

3

4