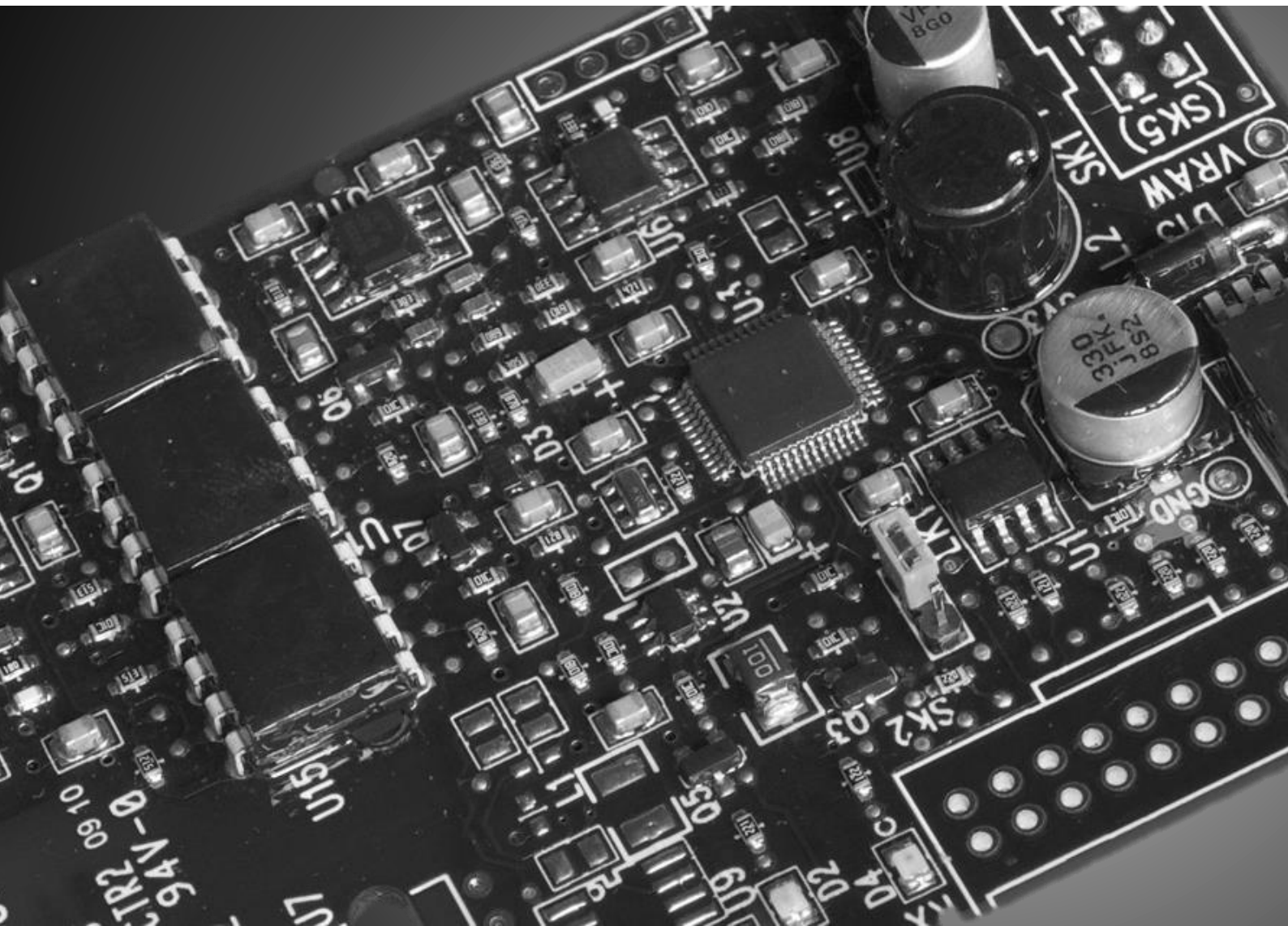


# rotork®

Keeping the World Flowing  
for Future Generations

## Enlight and Insight 2 Bluetooth® Compatibility



 Bluetooth®

## Contents

SUMMARY .....	2
ENLIGHT MINIMUM OPERATING REQUIREMENTS .....	2
INSIGHT 2 MINIMUM OPERATING REQUIREMENTS .....	2
<b>1.0 DETERMINE CURRENT BLUETOOTH DRIVERS .....</b>	<b>3</b>
1.1 OPEN CONTROL PANEL .....	5
1.2 OPEN DEVICE MANAGER.....	5
1.3 EXPAND THE BLUETOOTH DEVICE LIST .....	6
<b>2.0 INSTALL AN ALTERNATIVE BLUETOOTH RADIO .....</b>	<b>7</b>
2.1 DISABLE THE EXISTING BLUETOOTH DEVICE.....	7
2.2 INSTALL THE NEW BLUETOOTH DEVICE .....	7
2.3 CHECK CORRECT BLUETOOTH OPERATION .....	7

## Summary

Rotork provide PC software packages for use with *Bluetooth* enabled Rotork devices. This document covers the requirements for external *Bluetooth* USB adapters that have known compatibility with Rotork Enlight and Insight 2 programs. Integrated *Bluetooth* radios may work with Enlight and Insight 2 but due to PC/laptop variations, functionality is not guaranteed. Enlight and Insight 2 will only work with *Bluetooth* devices that utilise Microsoft *Bluetooth* Drivers.

## Enlight Minimum Operating Requirements

- Pentium class or equivalent processor
- 1GB RAM
- Minimum 1024 x 768 monitor resolution
- Microsoft Windows XP, Vista, 7, 8 or 10
- USB 1.0 or 2.0 port (if *Bluetooth* USB adaptor is required)

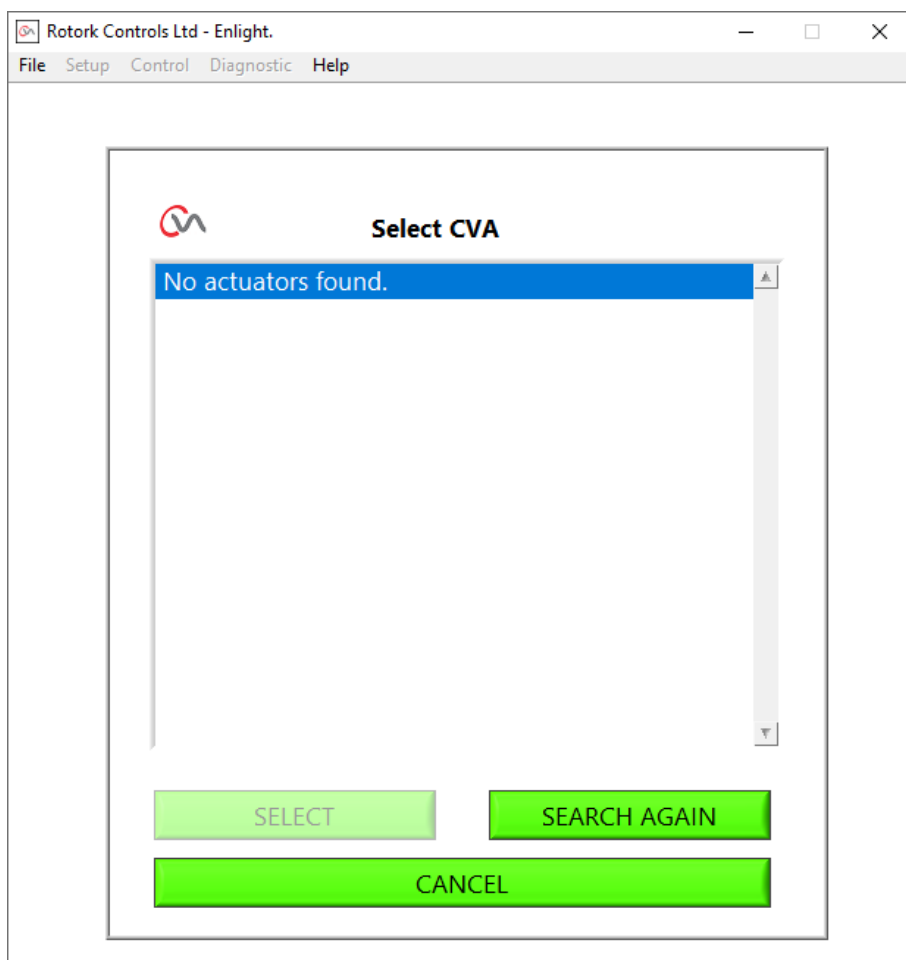
## Insight 2 Minimum Operating Requirements

- Pentium class or equivalent processor
- 1GB RAM
- Minimum 800 x 600 monitor resolution
- Microsoft Windows XP, Vista, 7, 8 or 10
- USB 1.0 or 2.0 port (if *Bluetooth* USB adaptor is required)

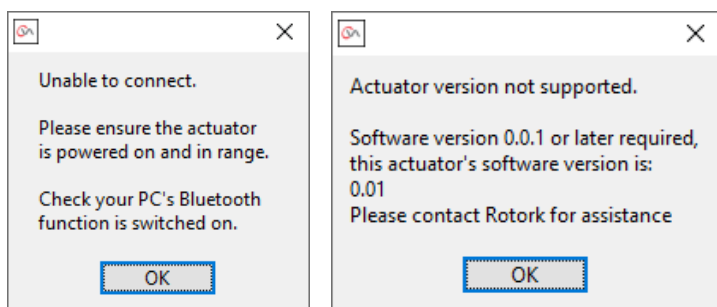
While every effort has been made to ensure that Enlight and Insight 2 work with these systems, individual operating system/PC set-up may affect operation. Enlight and Insight 2 operation cannot be guaranteed with other operating systems. Rotork cannot be held responsible if Enlight, Insight 2 or any part of either program does not work on any specific PC.

## 1.0 Determine Current *Bluetooth* Drivers

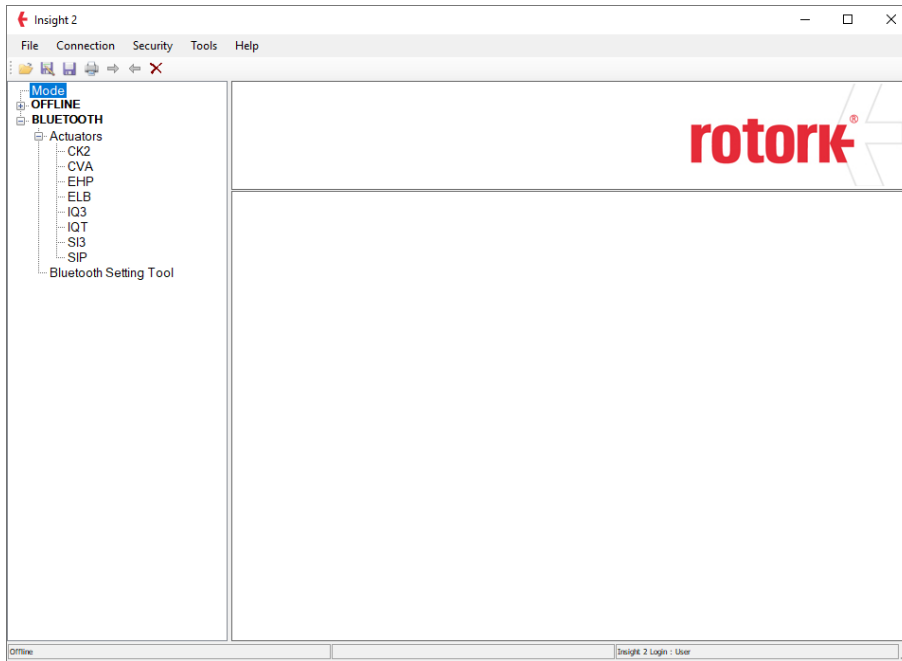
If Enlight immediately indicates 'No actuators found' (see image below) when searching for devices, there is an issue with the *Bluetooth* radio device and/or drivers.



Enlight may also show one of the following warnings if *Bluetooth* communication is not suitable for complete data transfer. The software version warning occurs if Enlight cannot validate the operating software version of the connected actuator.



If Insight 2 fails to populate devices in the BLUETOOTH section that are discoverable and within *Bluetooth* range, there is an issue with the *Bluetooth* radio device and/or drivers.

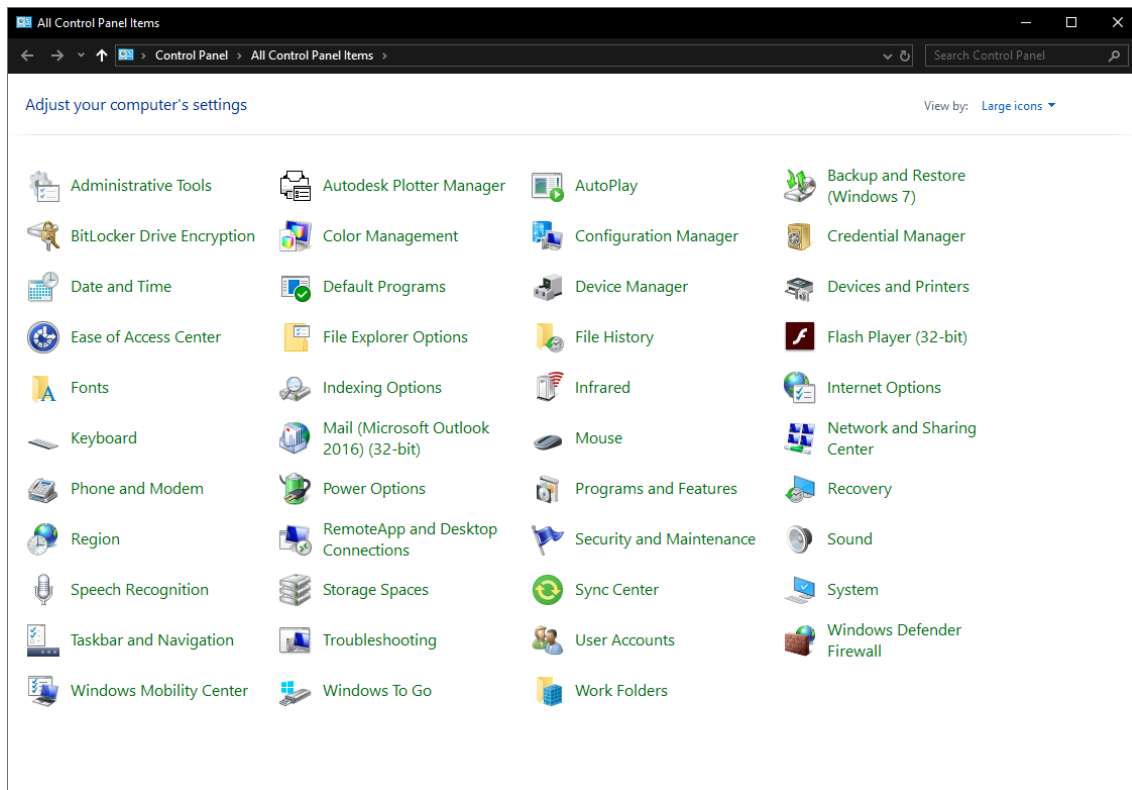


Insight 2 may also show the following warning if *Bluetooth* communication is not suitable for complete data transfer.

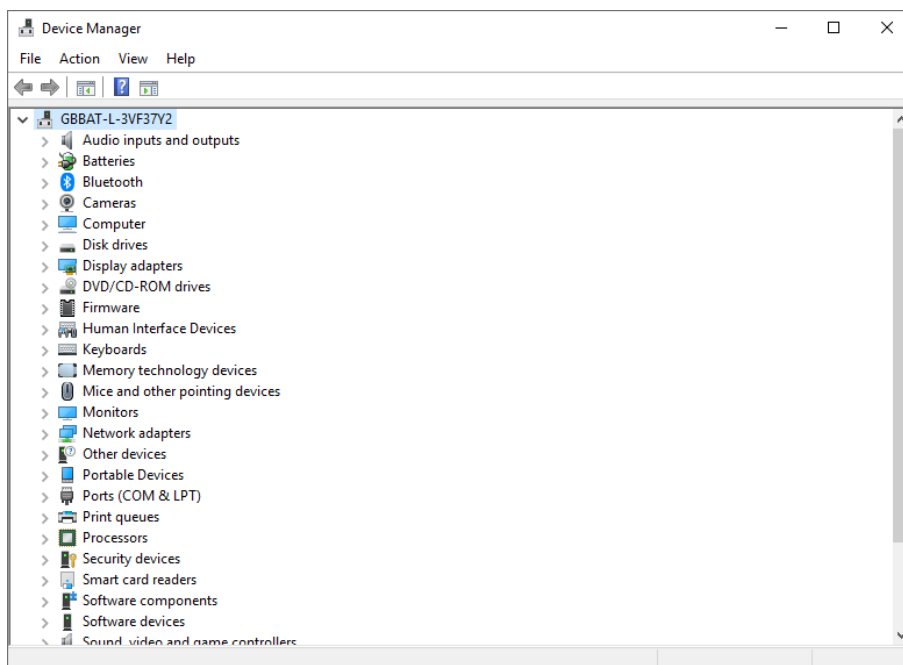


To confirm if your device is using the Microsoft drivers, follow the steps below (Admin rights required).

## 1.1 Open Control Panel

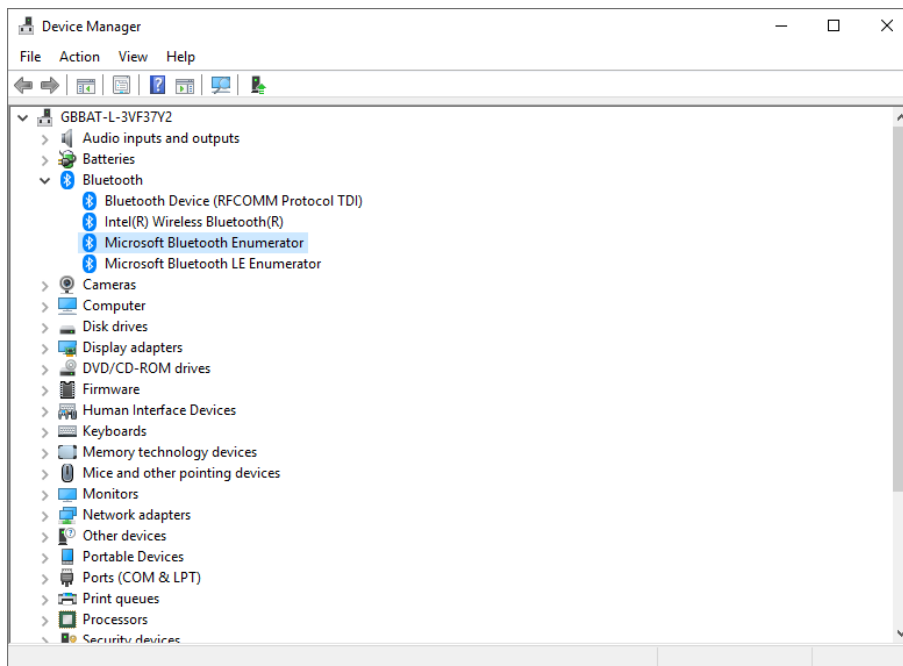


## 1.2 Open Device Manager



### 1.3 Expand the *Bluetooth* Device List

If the correct drivers are installed, Microsoft *Bluetooth* Enumerator should appear. Confirm there is not a warning icon on the Microsoft *Bluetooth* Enumerator as this could indicate a driver issue or disabled device.



If your PC does not have a suitable *Bluetooth* device present, a compatible *Bluetooth* USB adapter is required, refer to section 2.0. Below is a list of *Bluetooth* USB adapters that have been successfully tested by Rotork with Enlight and Insight 2 programs:

**Note – Do not install any of the software supplied with these devices, simply plug them into the USB port and allow Windows to configure them.**

Manufacturer	Model
Advent	ADE – C51 EDR
Asus	BT400
Laird Technologies	BRBLU03-101A0-02

## 2.0 Install an Alternative *Bluetooth* Radio

### Installation Procedure

#### 2.1 Disable the Existing *Bluetooth* Device

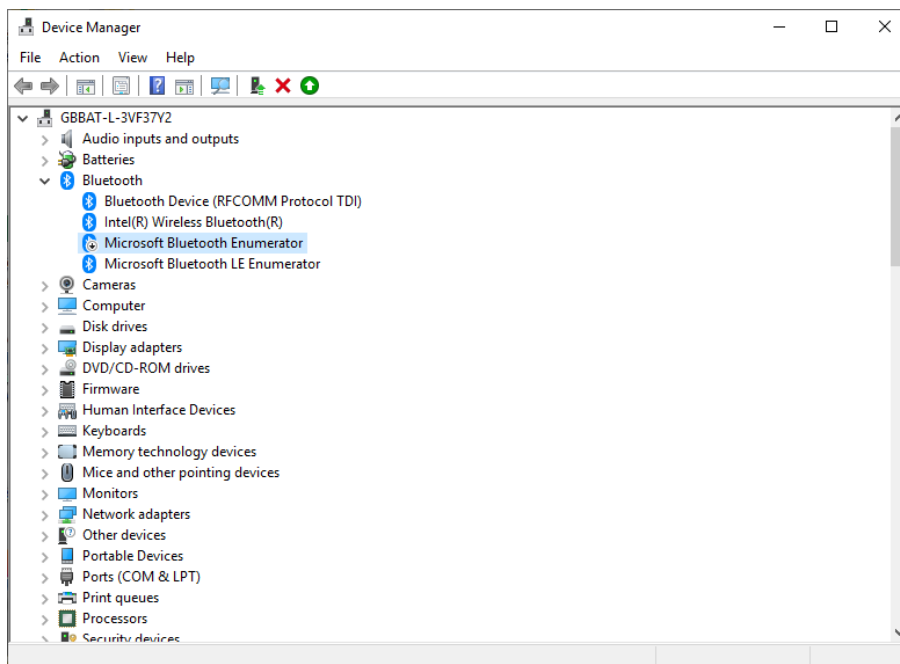
The existing *Bluetooth* device must be disabled. If the device is an external USB type then simply remove it. If it is a built in device then it must be disabled within Device Manager. Open Device Manager, refer to 1.1 to 1.3.

Expand the *Bluetooth* entry and disable any devices listed within this category (right click each device and choose 'Disable'). Listed devices will vary depending on the manufacturer. Restart the computer if prompted to do so.

#### 2.2 Install the New *Bluetooth* Device

Once the devices have been disabled and the computer restarted (if required), the new USB adapter can be inserted. Drivers for the adapter should install automatically without any user interaction. Verify the device is using the correct driver by checking the device status in Device Manager.

The device should appear without any icon against the *Bluetooth* logo. Consult your IT department if an icon is present.



#### 2.3 Check Correct *Bluetooth* Operation

Run Enlight or Insight 2 and perform a *Bluetooth* scan for new devices. Ensure devices within range are available for *Bluetooth* communication. If no actuators are found during the first scan, repeat the scan. If no actuators are found after the second scan, seek guidance from your IT department.

# rotork®

[www.rotork.com](http://www.rotork.com)

A full listing of our worldwide sales and service network is available on our website.

Rotork plc  
Brassmill Lane, Bath, UK  
*Tel* +44 (0)1225 733200  
*Fax* +44 (0)1225 333467  
*Email* mail@rotork.com

Rotork is a corporate member of the Institute of Asset Management



PUB000-122-00  
Issue 03/20

As part of a process of on-going product development, Rotork reserves the right to amend and change specifications without prior notice. Published data may be subject to change. For the very latest version release, visit our website at [www.rotork.com](http://www.rotork.com)  
The name Rotork is a registered trademark. Rotork recognizes all registered trademarks. The Bluetooth® word mark and logos are registered trademarks owned by Bluetooth SIG, Inc. and any use of such marks by Rotork is under license. Published and produced in the UK by Rotork. RDH0320.