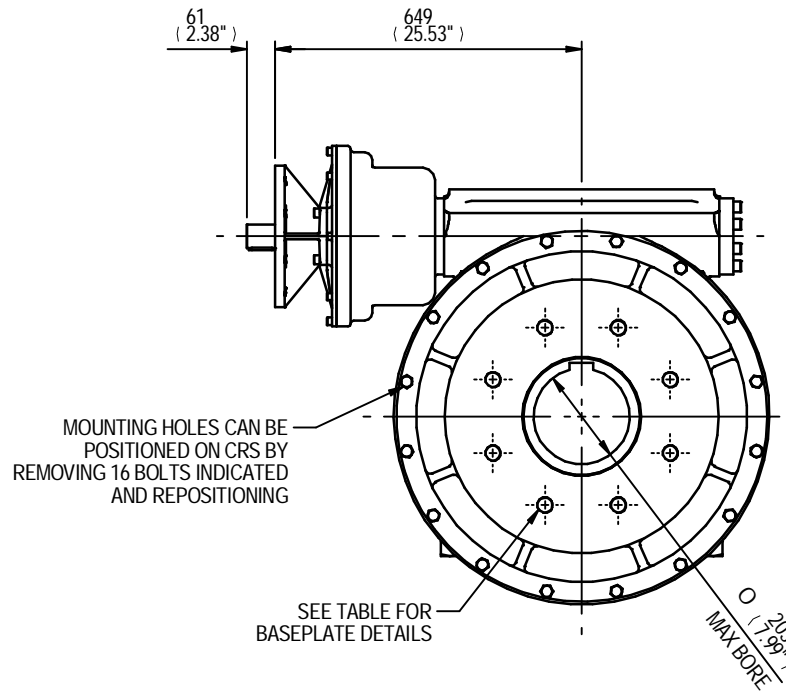
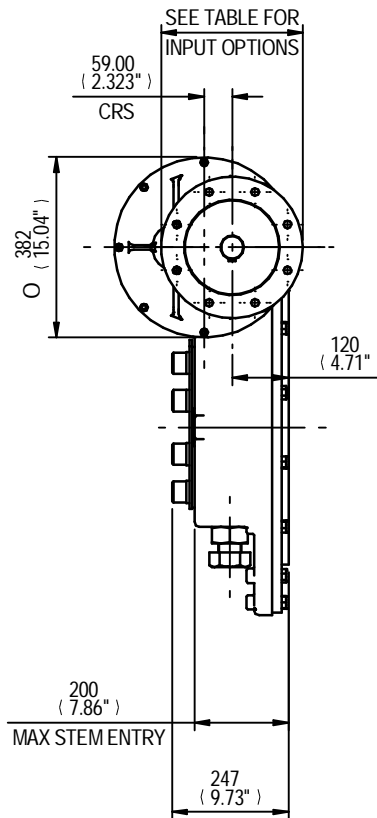
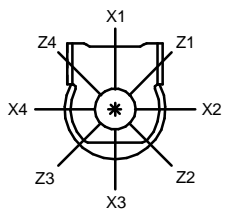


VIEW SHOWING MANUAL OPERATED UNIT RATIOS
180, 240, 360, 540, 720,
960, 1080, 1440, 2160, 2520 & 3000



VIEWS SHOWING MOTORISED OPERATED UNIT RATIOS
180, 240, 360, 540, 720,
960, 1080, 1440, 2160, 2520 & 3000

PLAN VIEW OF GEARBOX IN CLOSED POSITION SHOWING STANDARD KEYWAY POSITIONS. ALTERNATIVES AVAILABLE ON REQUEST.

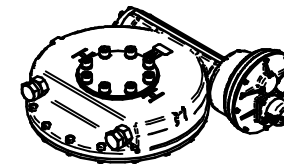


	INPUT FLANGE DETAILS (RATIO 180 TO 3000)					
	FLANGE O/DIA.	SHAFT DIA.	RECESS DIA.	RECESS DEPTH	HOLE DETAILS (OFF CENTRES)	KEY DETAILS
ISO F10	Ø125 (Ø4.92")	Ø20.00-0.05 (Ø0.787"-0.002")	Ø70.05+0.15 (Ø2.758"+0.006")	4 (0.16")	4 HOLES Ø10.5 (Ø0.41")	6X6X40
FA10	Ø125 (Ø4.92")	Ø20.00-0.05 (Ø0.787"-0.002")	Ø58.70+0.15 (Ø2.311"+0.006")	4 (0.16")	4 HOLES Ø10.5 (Ø0.41")	6X6X40
	Ø175 (Ø6.89")	Ø30.00-0.05 (Ø1.181"-0.002")	Ø100.05+0.15 (Ø3.939"+0.006")	5 (0.20")	4 HOLES Ø16.5 (Ø0.65")	8X7X55
ISO F14	Ø175 (Ø6.89")	Ø30.00-0.05 (Ø1.181"-0.002")	Ø95.25+0.15 (Ø3.750"+0.006")	4 (0.16")	4 HOLES Ø16.5 (Ø0.65")	8X7X55
FA14	Ø210 (Ø8.27")	Ø40.00-0.05 (Ø1.575"-0.002")	Ø130.05+0.15 (Ø5.120"+0.006")	5 (0.20")	4 HOLES Ø20.5 (Ø0.81")	12X8X55
	Ø210 (Ø8.27")	Ø40.00-0.05 (Ø1.575"-0.002")	Ø126.92+0.18 (Ø4.997"+0.007")	5 (0.20")	4 HOLES Ø20.5 (Ø0.81")	12X8X55
ISO F16	Ø210 (Ø8.27")	Ø40.00-0.05 (Ø1.575"-0.002")	Ø200.10+0.10 (Ø7.878"+0.004")	5 (0.20")	4 HOLES Ø16.5 (Ø0.65")	14X9X55
FA16	Ø300 (Ø11.81")	Ø50.00-0.05 (Ø1.969"-0.002")	Ø152.30+0.17 (Ø5.996"+0.007")	5 (0.20")	4 HOLES Ø16.5 (Ø0.65")	14X9X55
	Ø300 (Ø11.81")	Ø50.00-0.05 (Ø1.969"-0.002")	Ø152.30+0.17 (Ø5.996"+0.007")	5 (0.20")	4 HOLES Ø16.5 (Ø0.65")	14X9X55
ISO F25	Ø300 (Ø11.81")	Ø50.00-0.05 (Ø1.969"-0.002")	Ø254.0 (Ø10.00")	8 (0.20")	8 HOLES Ø20.5 (Ø0.81")	12X8X55
FA25	Ø300 (Ø11.81")	Ø50.00-0.05 (Ø1.969"-0.002")	Ø254.0 (Ø10.00")	8 (0.20")	8 HOLES Ø20.5 (Ø0.81")	12X8X55
	Ø300 (Ø11.81")	Ø50.00-0.05 (Ø1.969"-0.002")	Ø254.0 (Ø10.00")	8 (0.20")	8 HOLES Ø20.5 (Ø0.81")	12X8X55

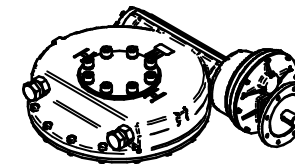
MAX BORE SQ KEY DETAILS		
STD	BORE	KEY
BS4235	-	-
BS46	-	-
ANSI B17.1	7.375"	1.3/4" SQ

BASEPLATE DETAILS (ALL RATIOS) (ALTERNATIVES AVAILABLE ON REQUEST)	
ISO	HOLE DETAILS (22.5" OFF CENTRES)
F35	8 HOLES M30X36 (1.42") DEEP ON Ø356.0 (Ø14.02") P.C.
FA35	8 HOLES 1"UNCx36 (1.42") DEEP ON Ø355.6 (Ø14.00") P.C.
	8 HOLES M36X36 (1.42") DEEP ON Ø406.0 (Ø15.98") P.C.
F40	8 HOLES 1.25"UNCx36 (1.42") DEEP ON Ø406.4 (Ø16.00") P.C.

MAX BORE RECTANGULAR KEY		
STD	BORE	KEY
BS4235	203.0	50X28
BS46	7.625"	2"X1.3/8"
ANSI B17.1	7.625"	2"X1.1/2"



MANUAL UNIT



MOTORISED UNIT

APPROX WEIGHT: 497.1 kg



IW/MOW11IR3 QUARTER TURN GEARBOX,
 180/ 240/ 360/ 540/ 720/ 960/ 1080/ 1440/ 2160/ 2520/ 3000:1 RATIOS
 MANUAL F10/ FA10/ F14/ FA14/ F16/ FA16/ F25/ FA25 INPUT
 F35/ FA35/ F40/ FA40 BASEPLATE

DETAILS SUBJECT TO CHANGE WITHOUT PRIOR NOTICE

FOR UP TO DATE DETAILS VISIT www.rotork.com

DRAWING No	PUB/IW11IR3	Regina House Ring Road Bramley Leeds LS134ET United Kingdom
ISSUE	2	
DATE	15/01/2013	