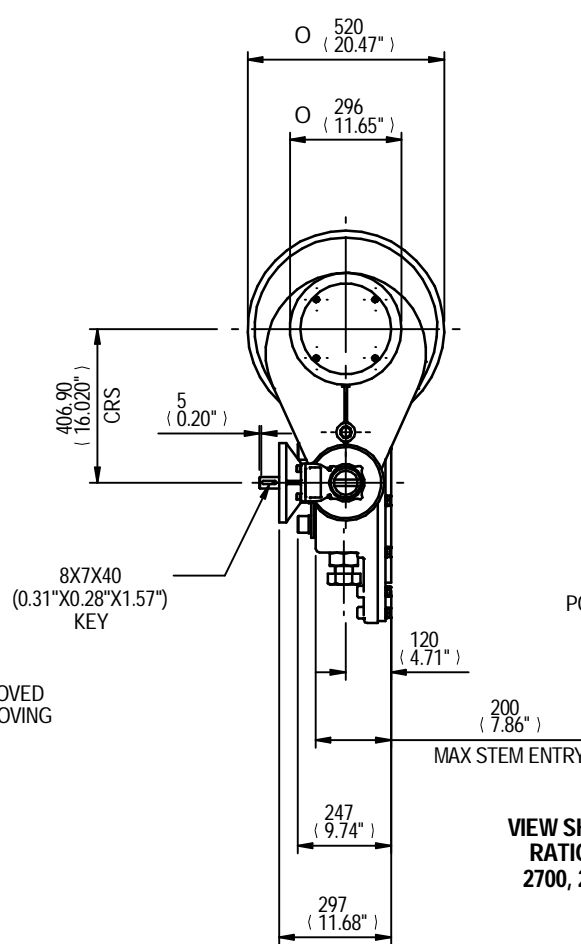
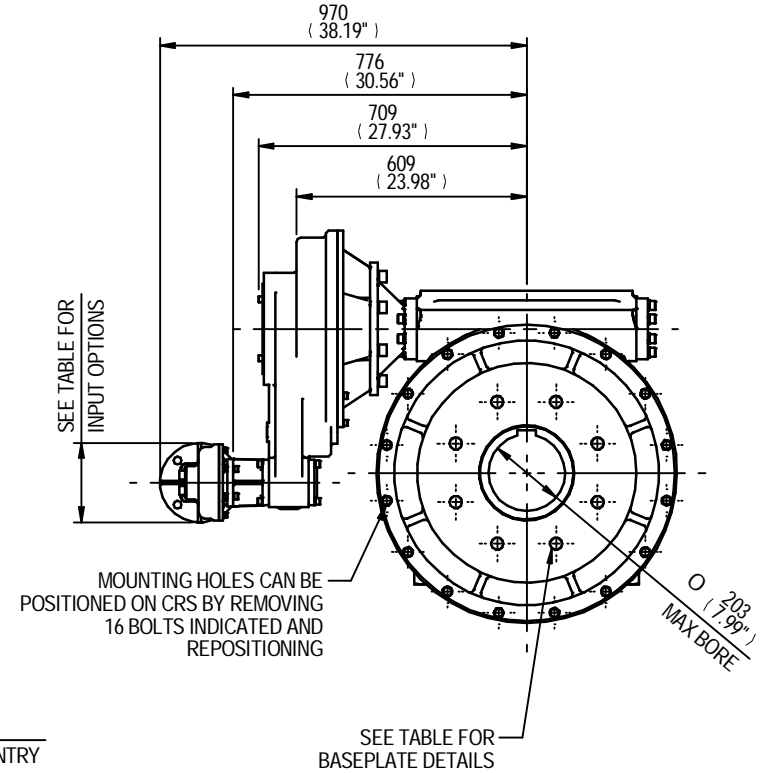


VIEW SHOWING MANUAL UNIT RATIOS 960, 1800, 2160, 2400, 2700, 2880, 3600, 4320 & 5400:1

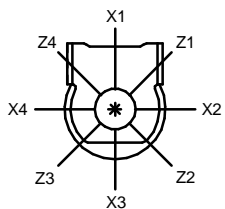
KEYWAY POSITION CAN BE MOVED THROUGH 45v STEPS BY REMOVING 8 SCREWS INDICATED AND ROTATING OUTPUT SLEEVE



VIEW SHOWING MOTORISED UNIT RATIOS 960, 1800, 2160, 2400, 2700, 2880, 3600, 4320 & 5400:1



PLAN VIEW OF GEARBOX IN CLOSED POSITION SHOWING STANDARD KEYWAY POSITIONS. ALTERNATIVES AVAILABLE ON REQUEST.

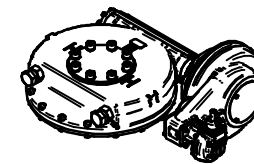


INPUT FLANGE DETAILS (RATIO 960/1800/2160/2400/2700/2880/3600/4320/5400)						
	FLANGE O/DIA.	SHAFT DIA.	RECESS DIA.	RECESS DEPTH	HOLE DETAILS (OFF CENTRES)	KEY DETAILS
ISO F10	Ø125 (Ø4.92)	Ø20.00-0.05 (Ø0.787"-0.002")	Ø70.05+0.15 (Ø2.758"+0.006")	4 (0.16")	4 HOLES Ø10.5 (Ø0.41") ON Ø102.0 (Ø4.02") P.C.	6X6X40 (0.24"X0.24"X1.57")
FA10	Ø125 (Ø4.92)	Ø20.00-0.05 (Ø0.787"-0.002")	Ø58.70+0.15 (Ø2.311"+0.006")	4 (0.16")	4 HOLES Ø10.5 (Ø0.41") ON Ø102.0 (Ø4.02") P.C.	6X6X40 (0.24"X0.24"X1.57")
ISO F14	Ø175 (Ø6.89)	Ø30.00-0.05 (Ø1.181"-0.002")	Ø100.05+0.15 (Ø3.939"+0.006")	5 (0.20")	4 HOLES Ø16.5 (Ø0.65") ON Ø140.0 (Ø5.51") P.C.	8X7X55 (0.31"X0.28"X2.17")
FA14	Ø175 (Ø6.89)	Ø30.00-0.05 (Ø1.181"-0.002")	Ø95.25+0.15 (Ø3.750"+0.006")	5 (0.20")	4 HOLES Ø16.5 (Ø0.65") ON Ø140.0 (Ø5.51") P.C.	8X7X55 (0.31"X0.28"X2.17")
ISO F16	Ø210 (Ø8.27)	Ø30.00-0.05 (Ø1.181"-0.002")	Ø130.05+0.15 (Ø5.120"+0.006")	5 (0.20")	4 HOLES Ø20.5 (Ø0.81") ON Ø165.0 (Ø6.50") P.C.	8X7X55 (0.31"X0.28"X2.17")
FA16	Ø210 (Ø8.27)	Ø30.00-0.05 (Ø1.181"-0.002")	Ø126.92+0.18 (Ø4.997"+0.007")	5 (0.20")	4 HOLES Ø20.5 (Ø0.81") ON Ø165.0 (Ø6.50") P.C.	8X7X55 (0.31"X0.28"X2.17")

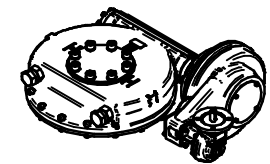
BASEPLATE DETAILS (ALL RATIOS) (ALTERNATIVES AVAILABLE ON REQUEST)	
	HOLE DETAILS (22.5° OFF CENTRES)
ISO F35	8 HOLES M30X36 (1.42") DEEP ON Ø356.0 (Ø14.02") P.C.
FA35	8 HOLES 1"UNCX36 (1.42") DEEP ON Ø355.6 (Ø14.00") P.C.
ISO F40	8 HOLES M36X36 (1.42") DEEP ON Ø406.0 (Ø15.98") P.C.
FA40	8 HOLES 1.25"UNCX36 (1.42") DEEP ON Ø406.4 (Ø16.00") P.C.

MAX BORE SQ KEY		
STD	BORE	KEY
BS4235	-	-
BS46	-	-
ANSI B17.1	7.375"	1.3/4"SQ

MAX BORE RECTANGULAR KEY		
STD	BORE	KEY
BS4235	203.0	50X28
BS46	7.625"	2"X1.3/8"
ANSI B17.1	7.625"	2"X1.1/2"



MANUAL UNIT



MOTORISED UNIT

APPROX WEIGHT: 625.2 kg



IW/MOW115IS12IB4 QUARTER TURN GEARBOX, 960/ 1800/ 2160/ 2400/ 2700/ 2880/ 3600/ 4320/ 5400:1 RATIOS

MANUAL F10/ FA10/ F14/ FA14/ F16/ FA16 INPUT: F35/ FA35/ F40/ FA40 BASEPLATE

DETAILS SUBJECT TO CHANGE WITHOUT PRIOR NOTICE

FOR UP TO DATE DETAILS VISIT www.rotork.com

DRAWING No	PUB/IW115IS12IB4	Regina House Ring Road Bramley Leeds LS134ET United Kingdom
ISSUE	2	
DATE	15/01/2013	