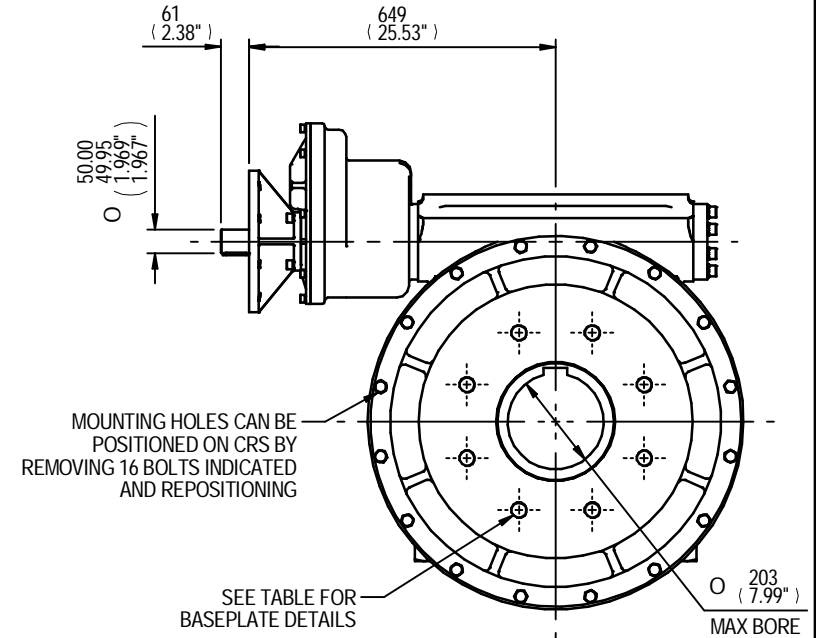
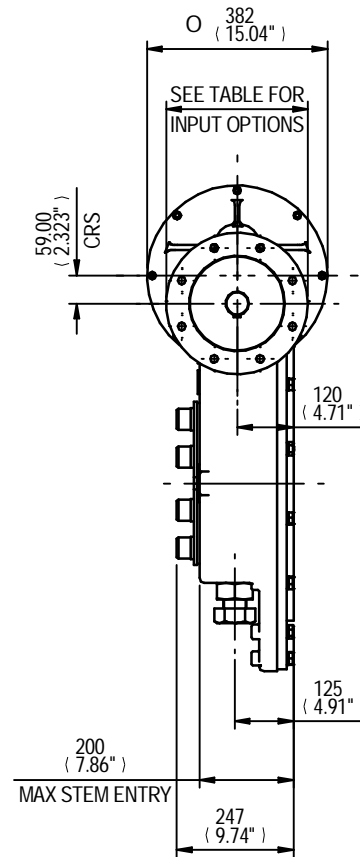
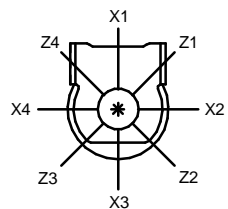


VIEW SHOWING MANUAL OPERATED UNIT RATIOS
360/ 490/ 560/ 650/ 760/ 900



VIEW SHOWING MOTORISED OPERATED UNIT RATIOS
360/ 490/ 560/ 650/ 760/ 900

PLAN VIEW OF GEARBOX IN CLOSED POSITION SHOWING STANDARD KEYWAY POSITIONS. ALTERNATIVES AVAILABLE ON REQUEST.

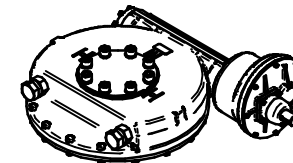


INPUT FLANGE DETAILS (RATIO 360/ 490/ 560/ 650/ 760/ 900)						
	FLANGE Ø/DIA.	SHAFT DIA.	RECESS DIA.	RECESS DEPTH	HOLE DETAILS (OFF CENTRES)	KEY DETAILS
ISO F14	Ø175 (Ø6.89")	Ø30.00-0.05 (Ø1.181"-0.002")	Ø100.05+0.15 (Ø3.939"+0.006")	5 (0.20")	4 HOLES Ø16.5 (Ø0.65") ON Ø140.0 (Ø5.51") P.C. (0.31"X0.28"X2.17")	8X7X55
FA14	Ø175 (Ø6.89")	Ø30.00-0.05 (Ø1.181"-0.002")	Ø95.25+0.15 (0.20")	5	4 HOLES Ø16.5 (Ø0.65") ON Ø140.0 (Ø5.51") P.C. (0.31"X0.28"X2.17")	8X7X55
ISO F16	Ø210 (Ø8.27")	Ø40.00-0.05 (Ø1.575"-0.002")	Ø130.05+0.15 (Ø5.120"+0.006")	5 (0.20")	4 HOLES Ø20.5 (Ø0.81") ON Ø165.0 (Ø6.50") P.C. (0.47"X0.31"X2.17")	12X8X55
FA16	Ø210 (Ø8.27")	Ø40.00-0.05 (Ø1.575"-0.002")	Ø126.92+0.18 (0.20")	5	4 HOLES Ø20.5 (Ø0.81") ON Ø165.0 (Ø6.50") P.C. (0.47"X0.31"X2.17")	12X8X55
ISO F25	Ø300 (Ø11.81")	Ø50.00-0.05 (Ø1.969"-0.002")	Ø200.10+0.10 (Ø7.878"+0.004")	5 (0.20")	8 HOLES Ø16.5 (Ø0.65") ON Ø254.0 (Ø10.00") P.C. (0.55"X0.35"X2.17")	14X9X55
FA25	Ø300 (Ø11.81")	Ø50.00-0.05 (Ø1.969"-0.002")	Ø152.30+0.17 (0.20")	5	8 HOLES Ø16.5 (Ø0.65") ON Ø254.0 (Ø10.00") P.C. (0.55"X0.35"X2.17")	14X9X55

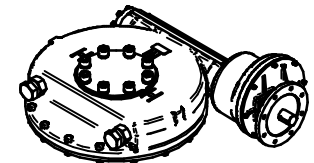
MAX BORE SQ KEY		
STD	BORE	KEY
BS4235	-	-
BS46	-	-
ANSI B17.1	7.375"	1.3/4" SQ

BASEPLATE DETAILS (ALL RATIOS) (ALTERNATIVES AVAILABLE ON REQUEST)	
HOLE DETAILS (22.5" OFF CENTRES)	
ISO F35	8 HOLES M30X36 (1.42") DEEP ON Ø356.0 (Ø14.02") P.C.
FA35	8 HOLES 1"UNCx36 (1.42") DEEP ON Ø355.6 (Ø14.00") P.C.
ISO F40	8 HOLES M36X36 (1.42") DEEP ON Ø406.0 (Ø15.98") P.C.
FA40	8 HOLES 1.25"UNCx36 (1.42") DEEP ON Ø406.4 (Ø16.00") P.C.

MAX BORE RECTANGULAR KEY		
STD	BORE	KEY
BS4235	203.0	50X28
BS46	7.625"	2"X1.3/8"
ANSI B17.1	7.625"	2"X1.1/2"



MANUAL UNIT



MOTORISED UNIT

APPROX WEIGHT: 502.2 kg



IW/MOW115IR35 QUARTER TURN GEARBOX,
360/ 490/ 560/ 650/ 760/ 900:1 RATIOS
F14/ FA14/ F16/ FA16/ F25/ FA25 INPUT
F35/ FA35/ F40/ FA40 BASEPLATE

DETAILS SUBJECT TO CHANGE WITHOUT PRIOR NOTICE

FOR UP TO DATE DETAILS VISIT www.rotork.com

DRAWING No	PUB-IW115IR35	Regina House Ring Road Bramley Leeds LS134ET United Kingdom
ISSUE	3	
DATE	31/03/2010	