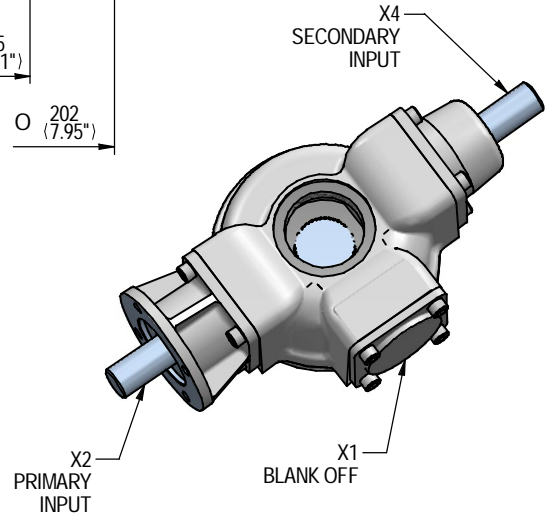
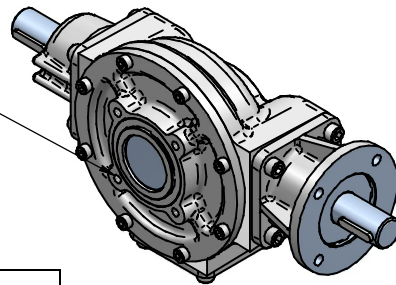


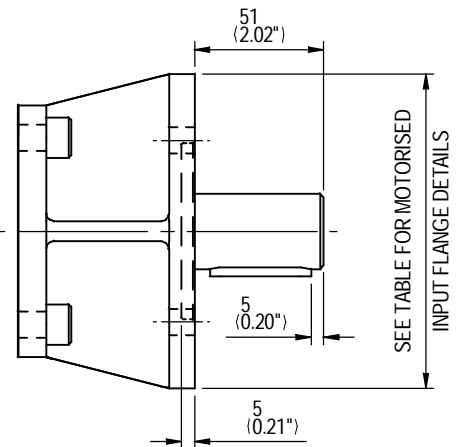
ADAPTOR PLATE FOR F07/FA07

SEE TABLE FOR BASEPLATE HOLE DETAILS



BASEPLATE DETAILS		
	SPIGOT DIA.	HOLE DETAILS (45° OFF CENTRES)
ISO F07	Ø54.95 -0.05 (Ø2.163" -0.002")	4 HOLES M8x15 (0.59") DEEP ON Ø70.0 (Ø2.76") P.C.
FA07	Ø54.95 -0.05 (Ø2.163" -0.002")	4 HOLES 5/16"UNCx15 (0.59") DEEP ON Ø69.9 (Ø2.75") P.C.
ISO F10	Ø69.95 -0.05 (Ø2.754" -0.002")	4 HOLES M10x15 (0.59") DEEP ON Ø102 (Ø4.02") P.C.
FA10	Ø69.95 -0.05 (Ø2.754" -0.002")	4 HOLES 3/8"UNCx15 (0.59") DEEP ON Ø101.6 (Ø4.00") P.C.

MOTORISED INPUT FLANGE DETAILS					
	FLANGE O/DIA. & THICKNESS	SHAFT DIA.	RECESS DIA.	HOLE DETAILS (OFF CENTRES)	KEY DETAILS
ISO F10	Ø125 (Ø4.92") x 10 (0.39")	Ø20.00 -0.05 (Ø0.787" -0.002")	Ø70.05 +0.05 (Ø2.758" +0.002")	4 HOLES Ø10.5 (Ø0.41") ON Ø102.0 (Ø4.02") P.C.	KEY 6x6x40 (0.24"x0.24"x1.57")
FA10	Ø125 (Ø4.92") x 10 (0.39")	Ø20.00 -0.05 (Ø0.787" -0.002")	Ø58.75 +0.05 (Ø2.313" +0.002")	4 HOLES Ø10.5 (Ø0.41") ON Ø102.0 (Ø4.02") P.C.	KEY 6x6x40 (0.24"x0.24"x1.57")
ISO F14	Ø175 (Ø6.89") x 15 (0.59")	Ø30.00 -0.05 (Ø1.181" -0.002")	Ø100.05 +0.05 (Ø3.939" +0.002")	4 HOLES Ø16.5 (Ø0.65") ON Ø140.0 (Ø5.51") P.C.	KEY 8x7x40 (0.31"x0.28"x1.57")
FA14	Ø175 (Ø6.89") x 15 (0.59")	Ø30.00 -0.05 (Ø1.181" -0.002")	Ø95.27 +0.05 (Ø3.751" +0.002")	4 HOLES Ø16.5 (Ø0.65") ON Ø140.0 (Ø5.51") P.C.	KEY 8x7x40 (0.31"x0.28"x1.57")



ROTORK GEARS
REGINA HOUSE
RING ROAD
BRAMLEY
LEEDS
WEST YORKSHIRE

IB4 DUAL INPUTS AT 180v BEVEL GEARCASE

DETAILS SUBJECT TO CHANGE WITHOUT PRIOR NOTICE

FOR UP TO DATE DETAILS VISIT www.rotork.com

ISSUE :-	A	SCALE :-	1 : 3 (A4)
DATE :-	12/11/2010		
DRAWING No :-	PUB-IB4-DUAL180		

