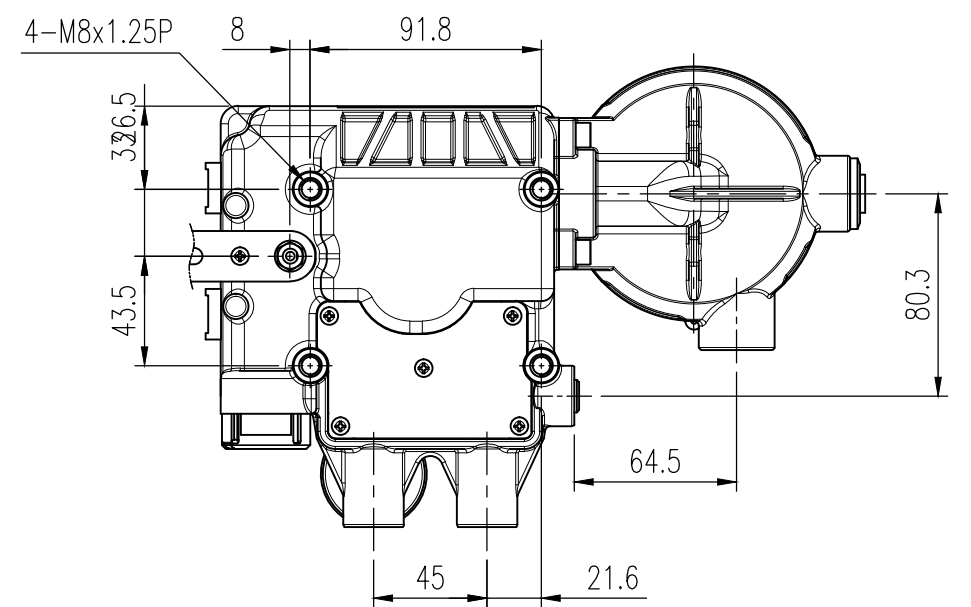
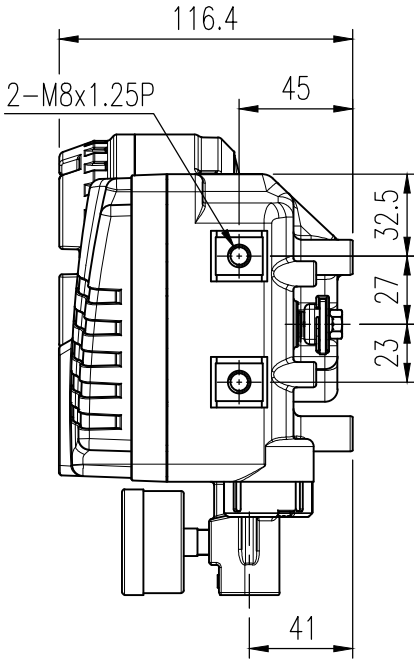
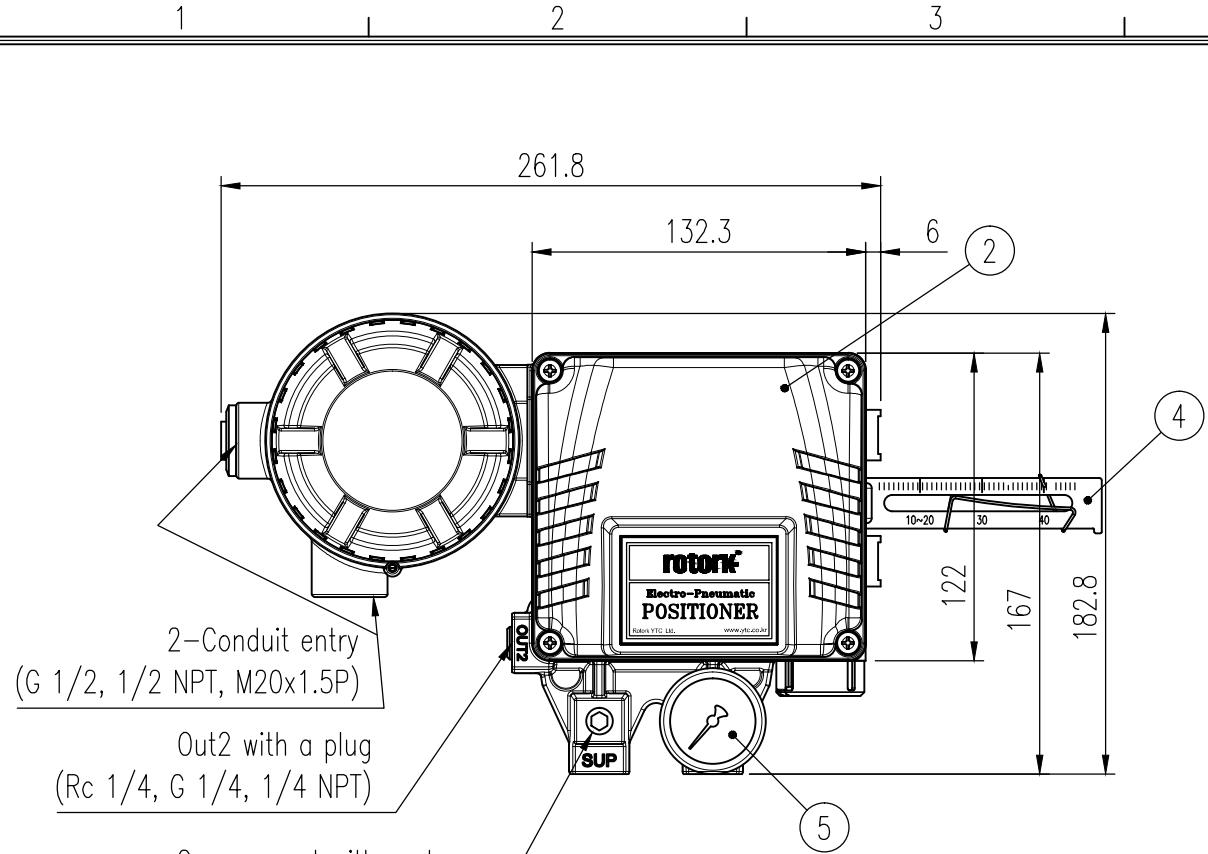


| REV.NO. | REVISION DESCRIPTION | DRAWN / DATE | REVIEWED / DATE | APPROVED / DATE |
|---------|------------------------------|--------------|-----------------|-----------------|
| | Previous versions omitted | | | |
| △ | Company name changed | KSH/20191016 | KCH/20191016 | KTJ/20191016 |
| △ | Gauge threads integrated ... | KCH/20250116 | JCS/20250116 | KTJ/20250116 |



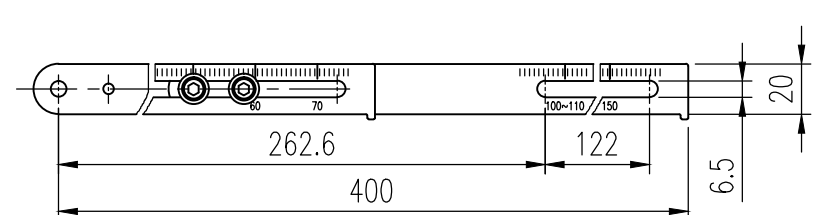
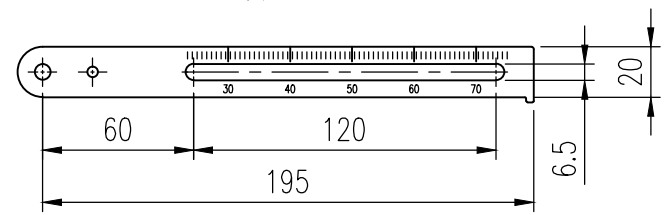
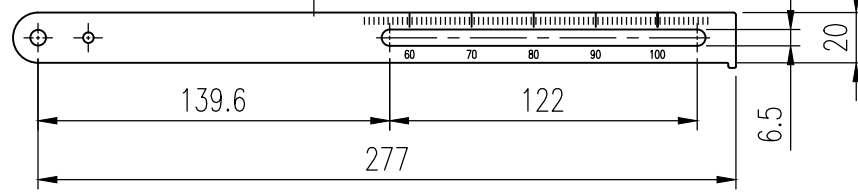
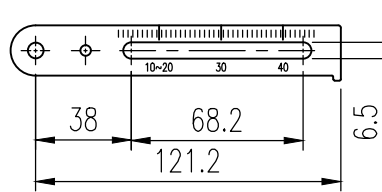
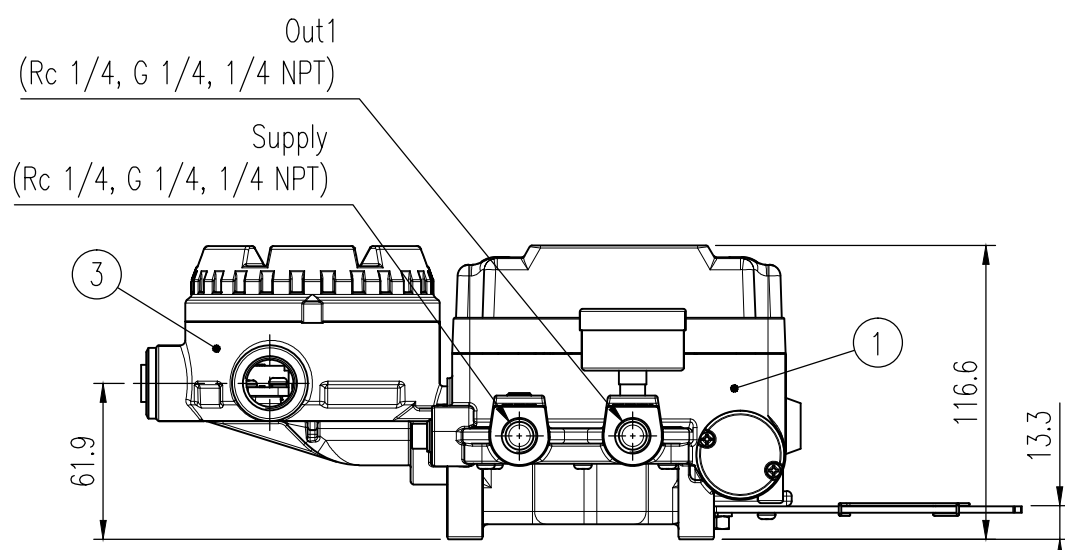
Specification(SPTM)

| Smart position transmitter | |
|----------------------------|---|
| Input Stroke | 10 to 150 mm |
| Output Signal | 4-20 mA DC |
| External load Resistance | $R_{ext} \leq (V_s - 9) / 20 \text{ mA}$, 750 ohms @ $V_s = 24 \text{ V}$ |
| Supply Voltage | $V_s : 9 \text{ to } 28 \text{ V DC}$ |
| Linearity | $\pm 1 \% \text{ F.S.}$ |
| Hysteresis | $\pm 0.2 \% \text{ F.S.}$ |
| Sensitivity | $\pm 0.2 \% \text{ F.S.}$ |

Specification(Positioner)

| | | |
|------------------------|---|---|
| Motion Type | Linear | |
| Acting Type | <input type="checkbox"/> Single | <input type="checkbox"/> Double |
| Input Signal | 4-20 mA DC | |
| Impedance | Max. $250 \pm 15 \Omega$ | |
| Supply Pressure | 0.14 to 0.7 MPa (1.4 to 7 bar) | |
| Stroke | 10 to 150 mm | |
| Conduit-Air Connection | <input type="checkbox"/> G 1/2-Rc 1/4 | <input type="checkbox"/> G 1/2-1/4 NPT |
| | <input type="checkbox"/> G 1/2-G 1/4 | <input type="checkbox"/> M20x1.5P-1/4 NPT |
| | <input type="checkbox"/> 1/2 NPT-1/4 NPT | |
| Explosion Protection | Non-Explosion proof | |
| Orifice Type | <input type="checkbox"/> $\phi 1$ | <input type="checkbox"/> $\phi 2$ <input type="checkbox"/> None |
| | Operating Temp. | Standard <input type="checkbox"/> -20 to 70 °C (-4 to 158 °F) |
| | Low <input type="checkbox"/> -40 to 70 °C (-40 to 158 °F) | |

| | | |
|--------------------|---------------------------------------|--|
| Linearity | Single | $\pm 1.0 \% \text{ F.S.}$ |
| | Double | $\pm 2.0 \% \text{ F.S.}$ |
| Hysteresis | | $\pm 1.0 \% \text{ F.S.}$ |
| Sensitivity | Single | $\pm 0.2 \% \text{ F.S.}$ |
| | Double | $\pm 0.5 \% \text{ F.S.}$ |
| Repeatability | | $\pm 0.5 \% \text{ F.S.}$ |
| Flow Capacity | | > 80 LPM (Sup. = 0.14 MPa, 1.4 bar) |
| Air Consumption | | < 2.5 LPM (Sup. = 0.14 MPa, 1.4 bar) |
| Ingress Protection | | IP66 (excluding the pressure gauges) |
| Weight | | 2.8 kg (6.2 lb) |
| Lever Type | <input type="checkbox"/> 10 to 40 mm | <input type="checkbox"/> 30 to 70 mm |
| | <input type="checkbox"/> 60 to 100 mm | <input type="checkbox"/> 100 to 150 mm |
| Housing Material | Aluminum | |
| Painting | Polyester Powder Coating | |



| No. | Part name | Material | Q'ty | Remark |
|-----|----------------|----------|------|--------------------------------|
| 1 | Base body | ALDC12 | 1 | |
| 2 | Base cover | ALDC12 | 1 | |
| 3 | Junction box | ALDC12 | 1 | |
| 4 | Feedback lever | STS304 | 1 | |
| 5 | Pressure gauge | STS304 | 1 | $\triangle 10/1/8 \text{ NPT}$ |

| | | | |
|-------------------|----------------|--------------|-------------------------------|
| SURFACE TEXTURE | PRODUCT NAME | PROJECT NAME | |
| FINISH TREATMENT | E/P Positioner | | |
| MATERIAL | MODEL | TITLE | |
| OTHERWISE NOTE | PROJECTION | SCALE | Linear, SPTM(No LCD) internal |
| GENERAL TOLERANCE | 3rd | 1 / 3 | |
| | QUANTITY | SHEET No. | DRAWING NO. |
| | 1 | 1 / 1 | YT-1000L-03 |
| | | | REV. 10 |