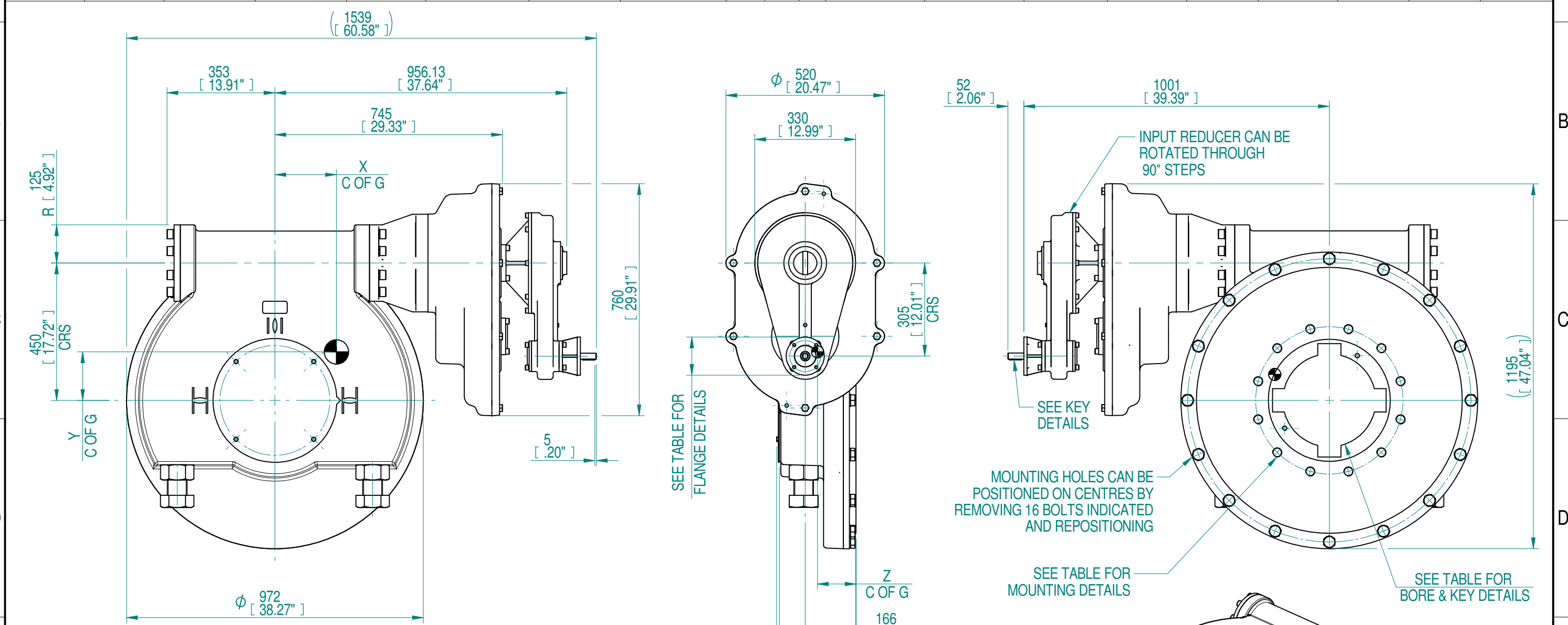
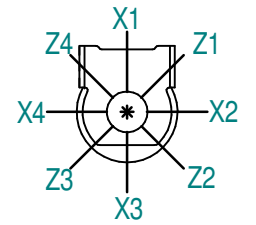


INPUT FLANGE DETAILS						MOUNTING HOLES - BOLT CIRCLE (OFF CENTRES)				STEM ACCEPTANCE IN ACCORDANCE TO STANDARD							
INPUT FLANGE	FLANGE O/DIA.	SHAFT DIA.	RECESS DIA.	RECESS DEPTH	HOLE DETAILS (OFF CENTRES)	KEY DETAILS	ISO 5211 / MSS SP-101 MOUNTING OPTION	HOLE DETAILS (OFF CENTRES)	MAX OUTSIDE DIA. INCLUDING DRILLED HOLES	MIN INSIDE DIA. INCLUDING DRILLED HOLES	SQ BORE MAX	STANDARD	MIN BORE	SQ KEY MAX BORE	SQ KEY SIZE	RECT. KEY MAX BORE	RECT KEY SIZE
ISO F10	Ø125 x 10 (Ø4.92" x 0.393")	Ø20-0.05 (Ø0.787"-0.002")	Ø70.05+0.15 (Ø2.758"+0.006")	4 (0.16")	4 x Ø10.5 ON Ø102.0 P.C. (4 x Ø0.41" ON Ø4.02" P.C.)	6x6x40 (0.23"x0.23"x1.57")	ISO F48*	12 x M36 x 36 (1.42") DEEP ON Ø483.0 (Ø19.02") P.C.	Ø835 (32.87")	Ø436 (17.16")	□ 229.5 (9.03")	BS4235	-	-	-	305	70 x 36
FA10			12 x 1.25" UNC x 36 (1.42") DEEP ON Ø482.6 (Ø19.00") P.C.				ANSI B17.1	-				11.75"	3" SQ.	12"	3" x 2"		
			Ø58.70+0.15 (Ø2.311"+0.006")				FA48*					DIN 6885	-	-	-	305	70 x 36



- NOTES:
- OTHER INPUT AND OUTPUT OPTIONS AVAILABLE - SEE 'IW GEARBOX BROCHURE' AT WWW.ROTORC.COM FOR FURTHER DETAILS.
 - CENTRE OF GRAVITY POSITION IS INDICATIVE FOR STANDARD BUILD WHEN IN POSITION SHOWN.
 - * THREAD DEPTH DOES NOT MATCH ISO STANDARD.
 - WEIGHT AND C OF G DIMENSIONS WILL VARY +/-1% DEPENDING ON RATIO.

PLAN VIEW OF GEARBOX IN CLOSED POSITION SHOWING STANDARD KEYWAY POSITIONS. ALTERNATIVES AVAILABLE ON REQUEST



6720	1680	2252			90			
5666	1417	1899			107			
4480	1120	1501			135			
3360	840	1126			180			
2833	708	949	1103	203000	214	202	159	126
2240	560	751			270			
1680	420	563			361			
1416	354	475			428			
RATIO	TURNS TO CLOSE	M.A. ± 10%	WEIGHT (KG)	MAX OUTPUT (Nm)	MAX INPUT (Nm)	X	Y	Z

Rev	ECN	Revised	Rev. Approved	Date	Change Description
0-0		S.Monish	J.Dickinson	2019-11-13	First issue

AS PART OF CONTINUOUS PRODUCT DEVELOPMENT, ALL DETAILS SUBJECT TO CHANGE WITHOUT PRIOR NOTICE. FOR UP TO DATE DETAILS PLEASE VISIT www.rotork.com

rotork Gears
LEEDS - UK
www.rotork.com

©2019 Rotork Group of Companies. All rights reserved. This document and its contents may not be reproduced, distributed, transmitted, displayed, published, or broadcast, in whole, or in part, without the prior, express written permission of Rotork Group of Companies.

Dimensions in mm
Scale 1:13

Title **IW13 IR4 AS6 QUARTER TURN GEAR BOX 12" BORE IR/AS RATIO**

Created S.Monish 2019-10-15
Checked V.G.Balaji 2019-10-15
Approved J.Dickinson 2019-11-13

Drawing Number **PUB-IW13-IR4-AS6-2**
Rev 0-0

Nominal Mass **SEE TABLE** Size A3 Sheet 1 of 1