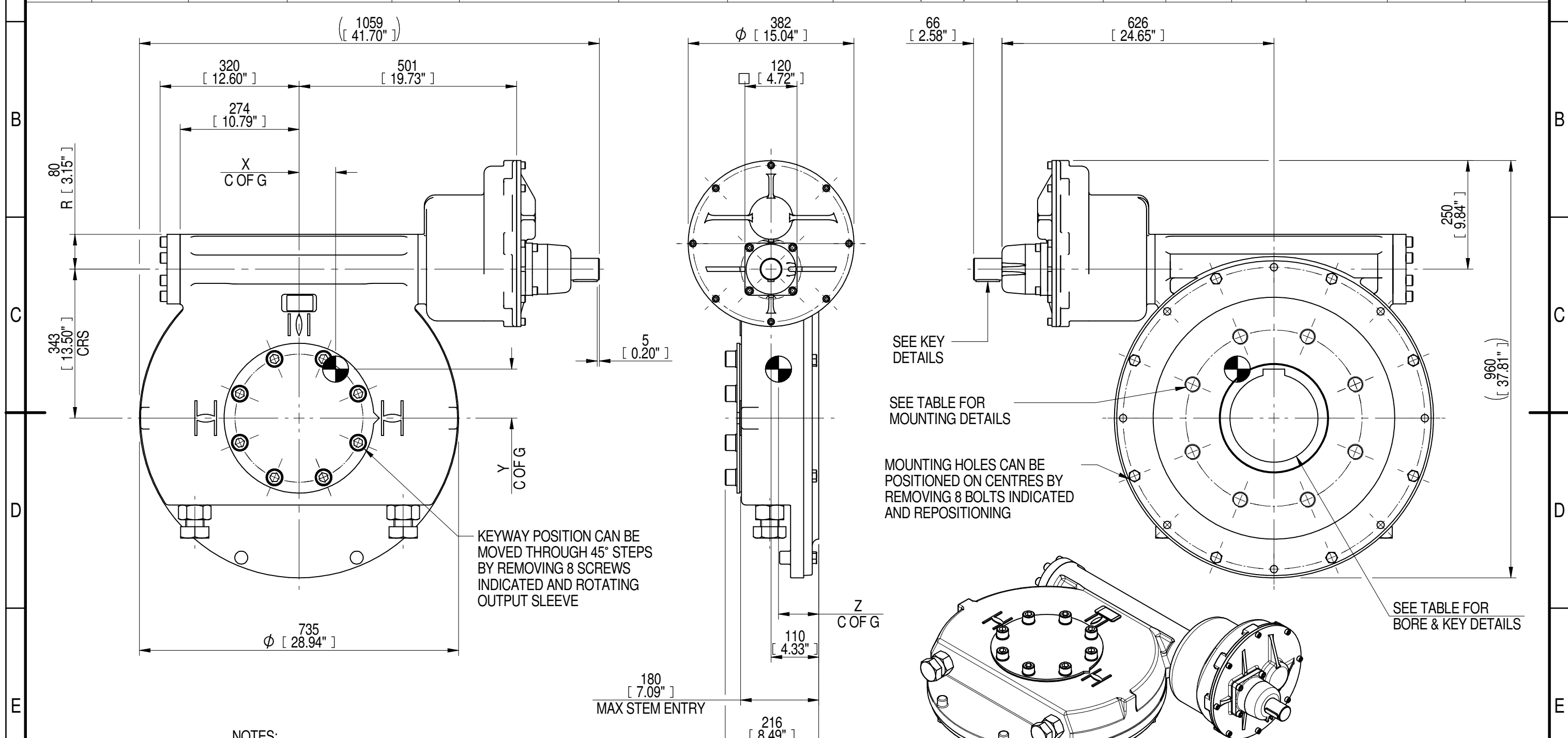


INPUT FLANGE DETAILS								MOUNTING HOLES - BOLT CIRCLE (OFF CENTRES)							
INPUT FLANGE	FLANGE O/DIA. + THICKNESS	SHAFT DIA.	RECESS DIA.	RECESS DEPTH	HOLE DETAILS (OFF CENTRES)	KEY DETAILS	ISO 5211 / MSS SP-101 MOUNTING OPTION	HOLE DETAILS (22.5° OFF CENTRES)	STANDARD	MIN BORE	SQ KEY MAX BORE	SQ KEY SIZE	RECT. KEY MAX BORE	RECT. KEY SIZE	SQ BORE MAX
		Ø50.00-0.05 (Ø1.969"-0.002")				14x9x55 (0.55"x0.35"x2.17")	ISO F40*	8 x M36 x 36 (1.42") DEEP ON Ø406.0 (Ø15.98") P.C.	BS4235	-	-	-	203	50 x 28	□ 152.6 (6.00")
							FA40*	8 x 1.25" UNC x 36 (1.42") DEEP ON Ø406.4 (Ø16.00") P.C.	ANSI B17.1	-	7.375"	1.3/4" SQ.	7.625"	2" x 1.1/2"	
									DIN 6885	-	-	-	203	50 x 28	



KEYWAY POSITION CAN BE MOVED THROUGH 45° STEPS BY REMOVING 8 SCREWS INDICATED AND ROTATING OUTPUT SLEEVE

SEE KEY DETAILS

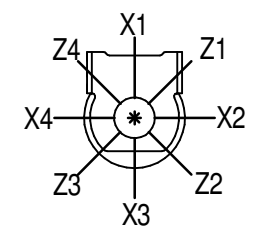
SEE TABLE FOR MOUNTING DETAILS

MOUNTING HOLES CAN BE POSITIONED ON CENTRES BY REMOVING 8 BOLTS INDICATED AND REPOSITIONING

SEE TABLE FOR BORE & KEY DETAILS

1:12

PLAN VIEW OF GEARBOX IN CLOSED POSITION SHOWING STANDARD KEYWAY POSITIONS. ALTERNATIVES AVAILABLE ON REQUEST



NOTES:
 1. * THREAD DEPTH DOES NOT MATCH ISO STANDARD
 2. CENTRE OF GRAVITY POSITION IS INDICATIVE FOR STANDARD BUILD WHEN IN POSITION SHOWN

RATIO	TURNS TO CLOSE	M.A. ± 10%	WEIGHT (Kg)	MAX OUTPUT (Nm)	MAX INPUT (Nm)	X	Y	Z
DESCRIPTION			TORQUE		CENTRE OF GRAVITY			
3000	750	1188	393	88130	74	84	113	93
2520	630	998	398	88130	88	89	117	93
2160	540	855	392	88130	103	83	112	93
1440	360	570	394	88130	155	84	113	93
1080	270	428	391	88130	206	83	112	93
960	240	380	394	88130	232	84	113	93

AS PART OF CONTINUOUS PRODUCT DEVELOPMENT, ALL DETAILS SUBJECT TO CHANGE WITHOUT PRIOR NOTICE. FOR UP TO DATE DETAILS PLEASE VISIT www.rotork.com

	Document Type PUBLICITY	Title IW/MOW10 QUARTER TURN GEARBOX, 960/1080/1440/2160/2520/3000 : 1, MANUAL INPUT: F40/ FA40 OUTPUT
	Dimensions in mm	
LEEDS - UK www.rotork.com		Iss. 01 Sheet 1 of 1 Size A3