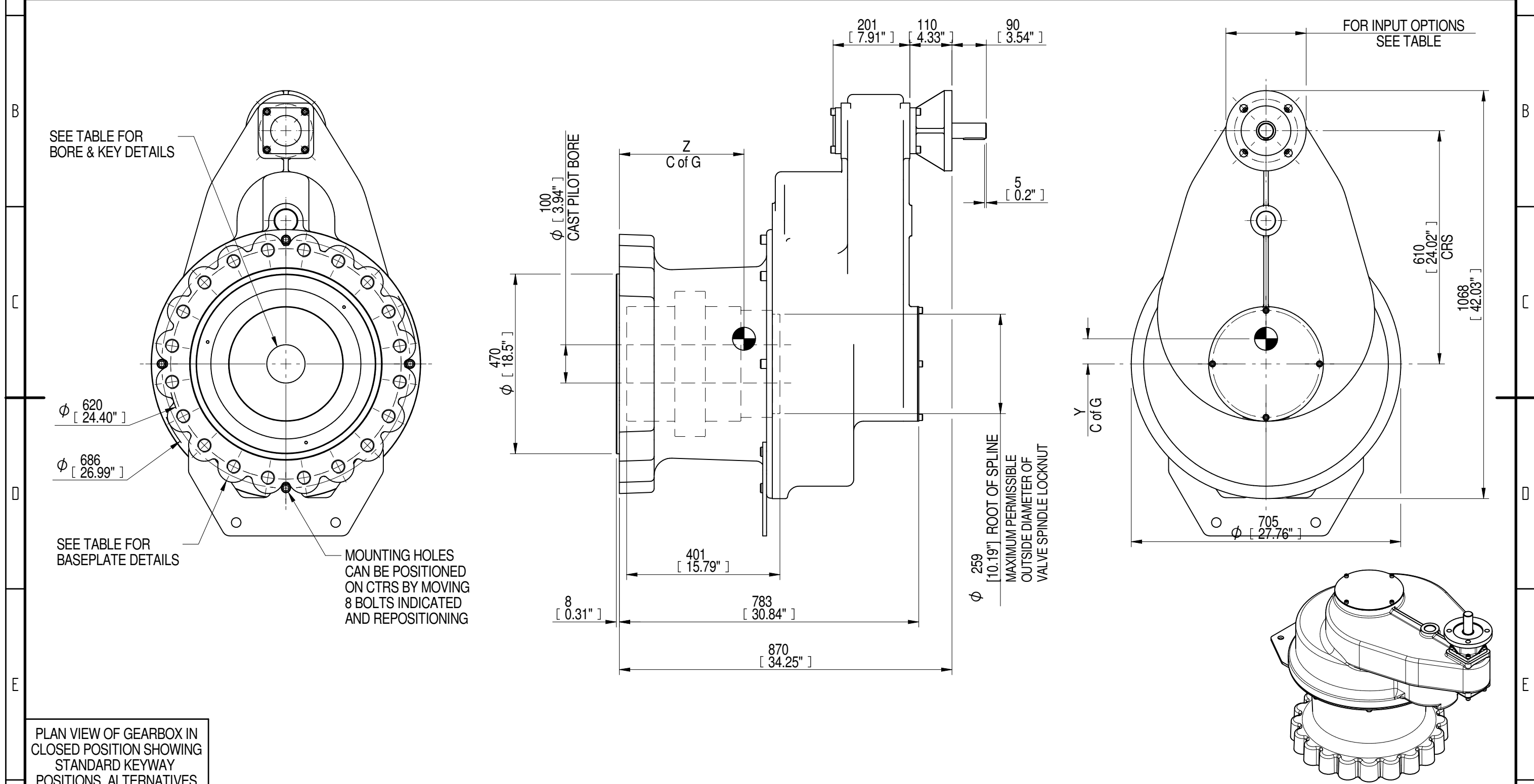
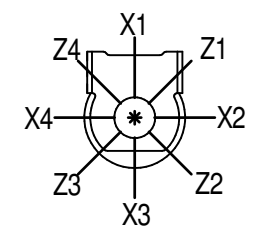


INPUT FLANGE DETAILS		MOUNTING HOLES - BOLT CIRCLE (OFF CENTRES)				STEM ACCEPTANCE IN ACCORDANCE TO STANDARD										
INPUT FLANGE	FLANGE O/DIA. + THICKNESS	SHAFT DIA.	RECESS DIA.	RECESS DEPTH	HOLE DETAILS 45° (OFF CENTRES)	KEY DETAILS	ISO 5211 / MSS SP-101 MOUNTING OPTION	HOLE DETAILS 9° (OFF CENTRES)	MAX STEM SCREW ACCEPTANCE	STANDARD	MIN BORE	SQ KEY MAX BORE	SQ KEY SIZE	RECT. KEY MAX BORE	RECT KEY SIZE	SQ BORE MAX
F16	Ø210 x 20	Ø40.00 - 0.05	Ø130.05 + 0.05	5	4 HOLES Ø20.5 ON Ø165.0 P.C.	12x8x55	F60	20 HOLES M36x54 DEEP ON Ø603.0 P.C.	Ø225	BS4235	107.1	-	-	206.0	50 x 28	□ 166 AF
FA16	(Ø8.27" x 0.79")	(Ø1.575" - 0.002")	(Ø4.997" + 0.002")	(0.20")	4 HOLES (Ø0.81") ON (Ø6.50") P.C.	(0.47"x0.31"x2.17")	FA60	20 HOLES (1.25"UNCx2.13") DEEP ON (Ø23.74") P.C.	(Ø8.750")	BS46	4.217"	7.500"	1.875" SQ	7.750"	2" x 1.375"	□ 6.535" AF
										ANSI B17.1	4.217"	7.500"	1.750" SQ	7.750"	2" x 1.50"	□ 6.535" AF
										DIN 6885	107.1	-	-	206.0	50 x 28	□ 166 AF



PLAN VIEW OF GEARBOX IN CLOSED POSITION SHOWING STANDARD KEYWAY POSITIONS. ALTERNATIVES AVAILABLE ON REQUEST



DESCRIPTION			TORQUE		CENTRE OF GRAVITY		
RATIO	M.A.	WEIGHT	MAX OUTPUT	MAX INPUT	X	Y	Z
15	13.650	1010 Kg	43386	3178	0	65	336
24	21.680	1008 Kg	43386	2001	0	64	335

AS PART OF CONTINUOUS PRODUCT DEVELOPMENT, ALL DETAILS SUBJECT TO CHANGE WITHOUT PRIOR NOTICE. FOR UP TO DATE DETAILS PLEASE VISIT [www.rotork.com](http://www.rotork.com)

**rotork** Gears  
Leeds - UK  
[www.rotork.com](http://www.rotork.com)

This drawing is confidential and is the property of Rotork Gears and must not be reproduced either wholly or partly. All rights in respect of patents, designs and copyrights are reserved. © 2013

Document type **PUBLICITY**

Dimensions in mm  
Scale 1:10

Created **E CHANG** 16/12/2013  
Checked **M JONES** 15/01/2014  
Approved

Title **IS21 GEARBOX F16/FA16 INPUT F60/FA60 OUTPUT**

Drawing Number **PUBIS21-F16-F60**

Sheet 1 of 1 Size A3

Rev B