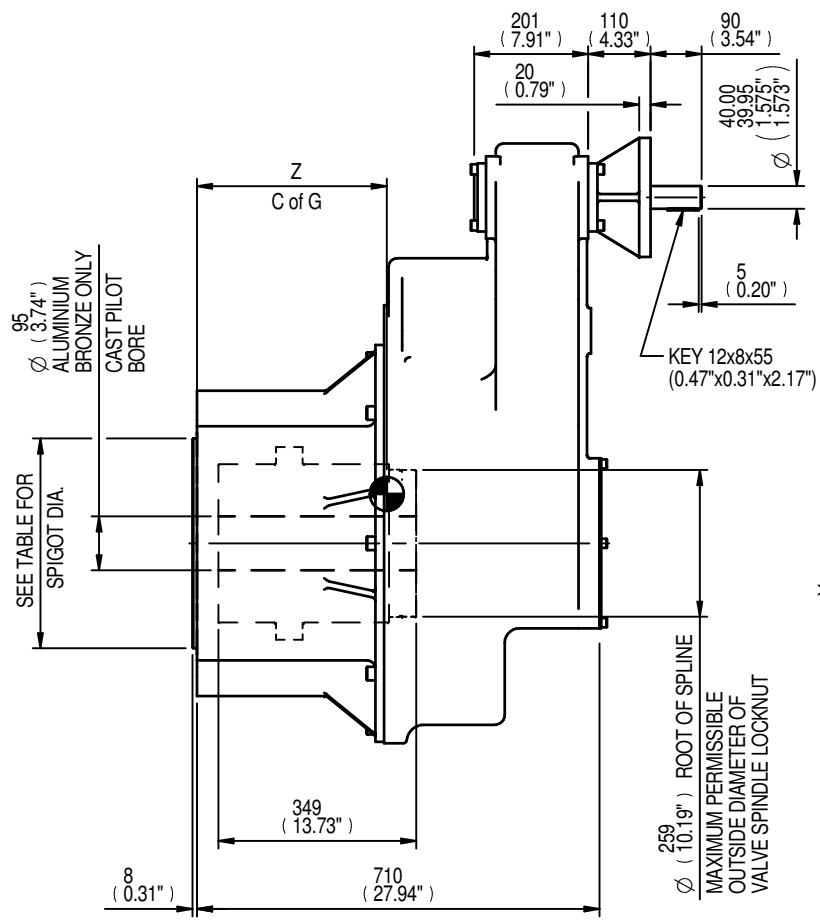


SEE TABLE FOR BORE & KEY DETAILS

SEE TABLE FOR BASEPLATE DETAILS

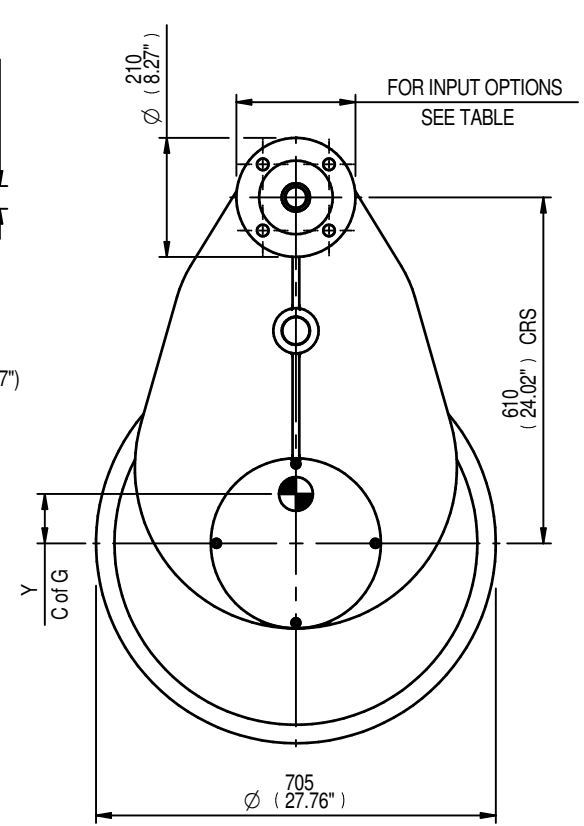
MOUNTING HOLES CAN BE POSITIONED ON CTRS BY REMOVING 8 BOLTS INDICATED AND REPOSITIONING



95 (3.74") ALUMINIUM BRONZE ONLY CAST PILOT BORE

SEE TABLE FOR SPIGOT DIA.

259 (10.19") ROOT OF SPLINE MAXIMUM PERMISSIBLE OUTSIDE DIAMETER OF VALVE SPINDLE LOCKNUT



FOR INPUT OPTIONS SEE TABLE

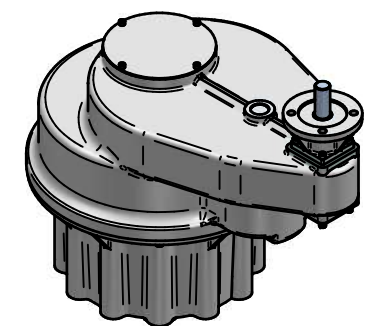
| RATIO | M.A. | C.O.G. | | | MAX. OUTPUT TORQUE Nm (lbs.ft) |
|-------|--------|--------|----|-----|--------------------------------|
| | | X | Y | Z | |
| 15 | 13.650 | 0 | 84 | 344 | 43386 (32000) |
| 24 | 21.680 | 0 | 83 | 349 | 43386 (32000) |

| MAX BORE SQ KEY | | | MAX BORE RECTANGULAR KEY | | |
|-----------------|--------|-----------|--------------------------|--------|-------------|
| STD | BORE | KEY | STD | BORE | KEY |
| BS4235 | - | - | BS4235 | 206.0 | 50 x 28 |
| BS46 | 7.500" | 1 7/8" SQ | BS46 | 7.750" | 2" x 1 1/2" |
| ANSI B17.1 | 7.500" | 1 3/4" SQ | ANSI B17.1 | 7.750" | 2" x 1 1/2" |

| | |
|--------------------------------|--------------|
| MAX STEM SCREW ACCEPTANCE DIA. | 225 (8.750") |
|--------------------------------|--------------|

| INPUT FLANGE DETAILS | | | | | |
|----------------------|-------------------------------|---------------------------------|----------------------------------|--------------|---|
| ISO | FLANGE | SHAFT | RECESS | RECESS | HOLE DETAILS |
| | O/DIA. & THICKNESS | DIA. | DIA. | DEPTH | 45°(OFF CENTRES) DETAILS |
| F16 | Ø210 x 20 (Ø8.27" x 0.79") | Ø40.00-0.05 (Ø1.575"-0.002") | Ø130.05+0.05 (Ø5.120"+0.002") | 5 (0.20") | 4 HOLES Ø20.5 (Ø0.81") ON Ø165.0 (Ø6.50") P.C. |
| | Ø210 x 20 (Ø8.27" x 0.79") | Ø40.00-0.05 (Ø1.575"-0.002") | Ø126.92+0.05 (Ø4.997"+0.002") | 5 (0.20") | 4 HOLES Ø20.5 (Ø0.81") ON Ø165.0 (Ø6.50") P.C. |

| BASEPLATE DETAILS | |
|-------------------|-----------------------------------|
| ISO | HOLE DETAILS (15° OFF CENTRES) |
| F48 | Ø369.95-0.05 (Ø14.565"-0.002") |
| F48 | Ø368.20-0.15 (Ø14.496"-0.006") |



IS20 GEARBOX F16/FA16 INPUT F48/FA48 OUTPUT

APPROX WEIGHT 738.0 kg

DETAILS SUBJECT TO CHANGE WITHOUT PRIOR NOTICE

FOR UP TO DATE DETAILS VISIT www.rotork.com

| | | |
|------------|-----------------|---|
| DRAWING No | PUBIS20-F16-F48 | 9 Brown Lane West Holbeck Leeds LS12 6BH United Kingdom |
| ISSUE | B | |
| DATE | 21/06/2011 | |