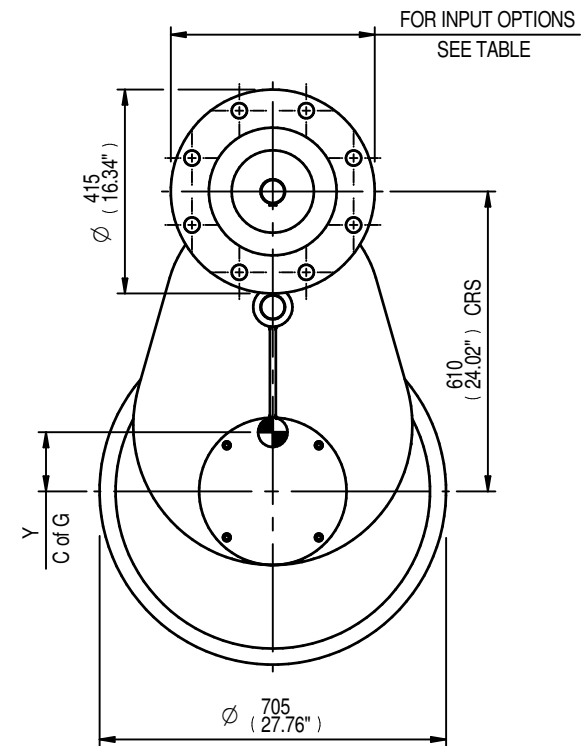
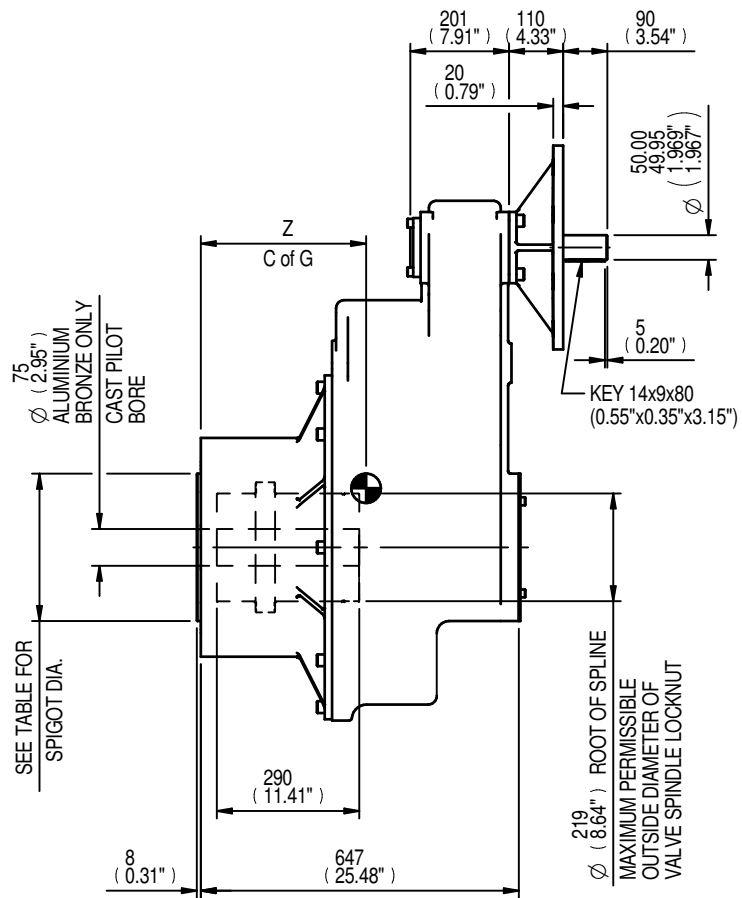


SEE TABLE FOR BORE & KEY DETAILS

SEE TABLE FOR BASEPLATE DETAILS

MOUNTING HOLES CAN BE POSITIONED ON CTRS BY REMOVING 8 BOLTS INDICATED AND REPOSITIONING



FOR INPUT OPTIONS SEE TABLE

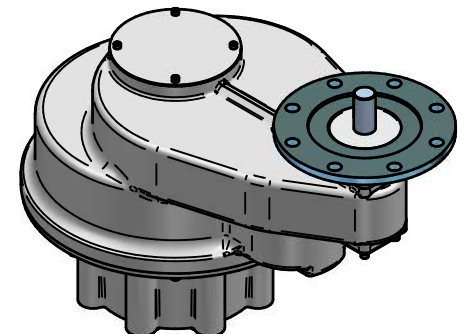
RATIO	M.A.	C.O.G.			MAX. OUTPUT TORQUE Nm (lbs.ft)
		X	Y	Z	
15	13.650	0	114	340	43386 (32000)
24	21.680	0	111	343	43386 (32000)

MAX BORE SQ KEY			MAX BORE RECTANGULAR KEY		
STD	BORE	KEY	STD	BORE	KEY
BS4235	-	-	BS4235	170.0	40x22
BS46	6.125"	1 ¹⁷ / ₃₂ " SQ	BS46	6.500"	1 ³ / ₈ "x1 ¹ / ₂ "
ANSI B17.1	6.125"	1 ¹ / ₂ " SQ	ANSI B17.1	6.500"	1 ¹ / ₂ "x1"

MAX STEM SCREW ACCEPTANCE DIA. 190(7.375")

	INPUT FLANGE DETAILS				
	FLANGE O/DIA. & THICKNESS	SHAFT DIA.	RECESS DIA.	RECESS DEPTH	HOLE DETAILS
ISO F35	Ø415 x 20	Ø50.00-0.05	Ø260.10+0.05	6	8 HOLES Ø31.0 (Ø1.22")
	(Ø16.34" x 0.79")	(Ø1.969"-0.002")	(Ø10.240"+0.002")	(0.24")	ON Ø356.0 (Ø14.02") P.C. (0.55"x0.35"x3.15")
FA35	Ø418 x 20	Ø50.00-0.05	Ø216.10+0.05	6	8 HOLES Ø23.0 (Ø0.91")
	(Ø16.46" x 0.79")	(Ø1.969"-0.002")	(Ø8.508"+0.002")	(0.24")	ON Ø356.0 (Ø14.02") P.C. (0.55"x0.35"x3.15")

	BASEPLATE DETAILS	
	SPIGOT DIA.	HOLE DETAILS (22.5° OFF CENTRES)
ISO F40	Ø299.95-0.05	8 HOLES M36x45 (1.77") DEEP
	(Ø11.809"-0.002")	ON Ø406.0 (Ø15.98") P.C.
FA40	Ø228.60-0.15	8 HOLES 1.25"UNCx45 (1.77") DEEP
	(Ø9.000"-0.006")	ON Ø406.4 (Ø16.00") P.C.



IS19 GEARBOX F35/FA35 INPUT F40/FA40 OUTPUT

DETAILS SUBJECT TO CHANGE WITHOUT PRIOR NOTICE

FOR UP TO DATE DETAILS VISIT www.rotork.com

APPROX WEIGHT 607.1 kg

DRAWING No	PUBIS19-F35-F40	9 Brown Lane West Holbeck Leeds LS12 6BH United Kingdom
ISSUE	B	
DATE	14/06/2011	