

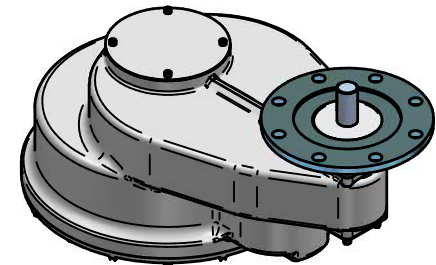
MOUNTING HOLES CAN BE POSITIONED ON CTRS BY REMOVING 8 BOLTS INDICATED AND REPOSITIONING

RATIO	M.A.	C.O.G.			MAX. OUTPUT TORQUE Nm (lbs.ft)
		X	Y	Z	
15	13.650	0	127	248	43386 (32000)
24	21.680	0	123	250	43386 (32000)

MAX BORE SQ KEY			MAX BORE RECTANGULAR KEY			MAX STEM SCREW ACCEPTANCE DIA 127(5.000")
STD	BORE	KEY	STD	BORE	KEY	
BS4235	-	-	BS4235	121.0	32x18	
BS46	4.500"	1 1/4" SQ	BS46	4.625"	1 1/4"x7/8"	
ANSI B17.1	4.500"	1" SQ	ANSI B17.1	4.625"	1 1/4"x7/8"	

	INPUT FLANGE DETAILS					
	FLANGE	SHAFT	RECESS	RECESS	HOLE DETAILS	KEY
	O/DIA. & THICKNESS	DIA.	DIA.	DEPTH	22.5°(OFF CENTRES)	DETAILS
ISO F35	Ø415 x 20	Ø50.00-0.05	Ø260.10+0.05	6	8 HOLES Ø31.0 (Ø1.22")	14x9x80
	(Ø16.34" x 0.79")	(Ø1.969"-0.002")	(Ø10.240"+0.002")	(0.24")	ON Ø356.0 (Ø14.02") P.C	(0.55"x0.35"x3.15")
FA35	Ø418 x 20	Ø50.00-0.05	Ø216.10+0.05	6	8 HOLES Ø23.0 (Ø0.91")	14x9x80
	(Ø16.46" x 0.79")	(Ø1.969"-0.002")	(Ø8.508"+0.002")	(0.24")	ON Ø356.0 (Ø14.02") P.C	(0.55"x0.35"x3.15")

	BASEPLATE DETAILS	
	SPIGOT DIA.	HOLE DETAILS (22.5° OFF CENTRES)
ISO F35	Ø259.95-0.05	8 HOLES M30x40 (1.57") DEEP (Ø10.234"-0.002") ON Ø356.0 (Ø14.02") P.C.
FA35	Ø215.80-0.25	8 HOLES 1"UNCx40 (1.57") DEEP (Ø8.496"-0.008") ON Ø355.6 (Ø14.00") P.C.



**rotork  
gears**

IS17 GEARBOX  
F35/FA35 INPUT F35/FA35 OUTPUT

DETAILS SUBJECT TO CHANGE WITHOUT PRIOR NOTICE

FOR UP TO DATE DETAILS VISIT [www.rotork.com](http://www.rotork.com)

APPROX WEIGHT 509.9 kg

DRAWING No	PUBIS17-F35-F35	9 Brown Lane West Holbeck Leeds LS12 6BH United Kingdom
ISSUE	B	
DATE	17/07/2012	