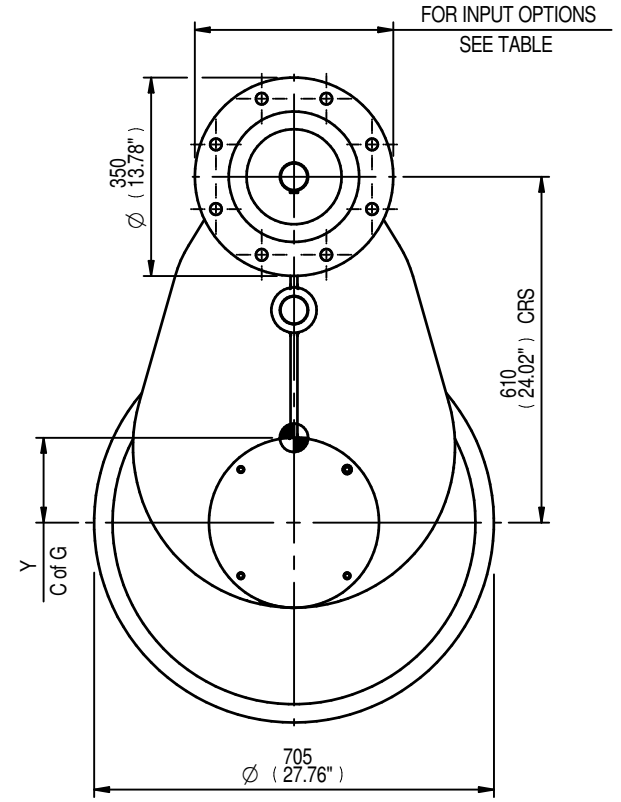
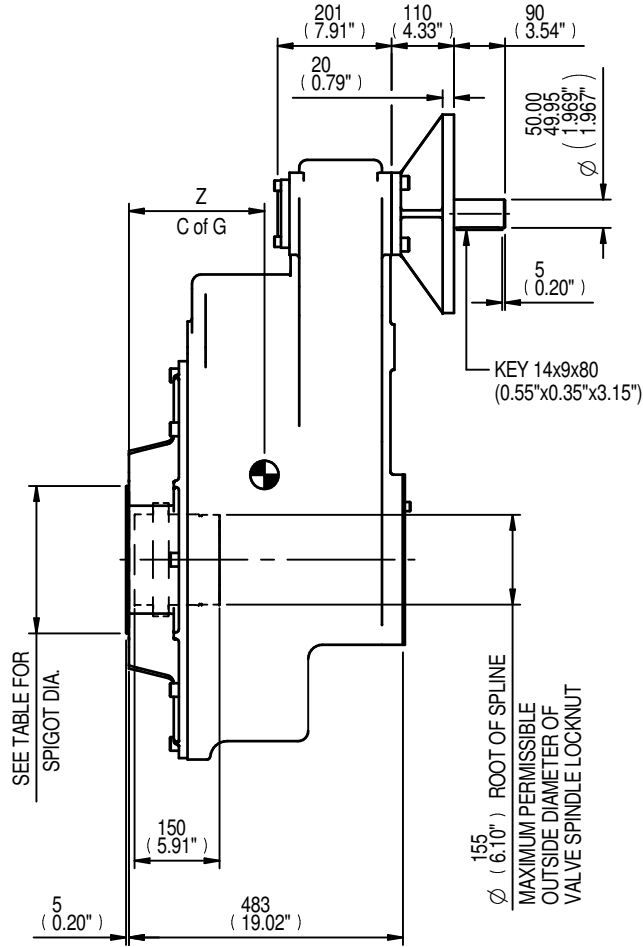


MOUNTING HOLES CAN BE POSITIONED ON CTRS BY REMOVING 8 BOLTS INDICATED AND REPOSITIONING

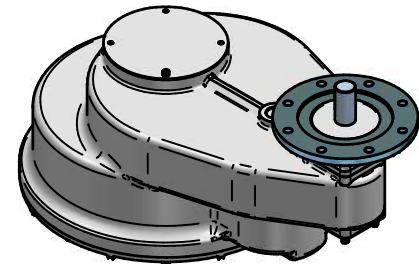


RATIO	M.A.	C.O.G.			MAX. OUTPUT TORQUE Nm (lbs.ft)
		X	Y	Z	
15	13.650	0	141	243	43386 (32000)
24	21.680	0	137	245	43386 (32000)

MAX BORE SQ KEY			MAX BORE RECTANGULAR KEY			MAX STEM SCREW ACCEPTANCE DIA 127(5.000")
STD	BORE	KEY	STD	BORE	KEY	
BS4235	-	-	BS4235	121.0	32x18	
BS46	4.500"	1 1/4" SQ	BS46	4.625"	1 1/4"x7/8"	
ANSI B17.1	4.500"	1" SQ	ANSI B17.1	4.625"	1 1/4"x7/8"	

	INPUT FLANGE DETAILS					
	FLANGE O/DIA. & THICKNESS	SHAFT DIA.	RECESS DIA.	RECESS DEPTH	HOLE DETAILS	KEY DETAILS
	ISO F30	Ø350 x 20 (Ø13.78" x 0.79")	Ø50.00-0.05 (Ø1.969"-0.002")	Ø230.10+0.05 (Ø9.059"+0.002")	6 (0.24")	8 HOLES Ø20.5 (Ø0.81") ON Ø298.0 (Ø11.73") P.C.
FA30	Ø350 x 20 (Ø13.78" x 0.79")	Ø50.00-0.05 (Ø1.969"-0.002")	Ø177.80+0.05 (Ø7.000"+0.002")	6 (0.24")	8 HOLES Ø20.5 (Ø0.81") ON Ø298.0 (Ø11.73") P.C.	14x9x80 (0.55"x0.35"x3.15")

	BASEPLATE DETAILS	
	SPIGOT DIA.	HOLE DETAILS (22.5" OFF CENTRES)
	ISO F35	Ø259.95-0.05 (Ø10.234"-0.002")
FA35	Ø215.80-0.25 (Ø8.496"-0.008")	8 HOLES 1"UNCx40 (1.57") DEEP ON Ø355.6 (Ø14.00") P.C.



**rotork
gears**

IS17 GEARBOX
F30/FA30 INPUT F35/FA35 OUTPUT

APPROX WEIGHT 467.4 kg

DETAILS SUBJECT TO CHANGE WITHOUT PRIOR NOTICE

FOR UP TO DATE DETAILS VISIT www.rotork.com

DRAWING No	PUBIS17-F30-F35	9 Brown Lane West Holbeck Leeds LS12 6BH United Kingdom
ISSUE	B	
DATE	17/07/2012	