

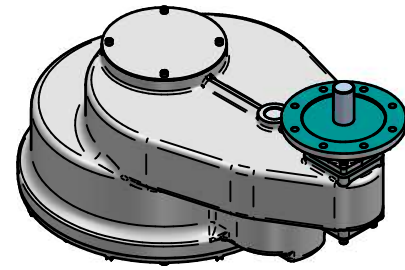
RATIO	M.A.	C.O.G.			MAX. OUTPUT TORQUE Nm (lbs.ft)
		X	Y	Z	
15	13.650	0	138	241	43386 (32000)
24	21.680	0	147	237	43386 (32000)

MAX BORE SQ KEY			MAX BORE RECTANGULAR KEY		
STD	BORE	KEY	STD	BORE	KEY
BS4235	-	-	BS4235	121.0	32x18
BS46	4.500"	1 1/4" SQ	BS46	4.625"	1 1/4"x7/8"
ANSI B17.1	4.500"	1" SQ	ANSI B17.1	4.625"	1 1/4"x7/8"

MAX STEM SCREW ACCEPTANCE DIA 127(5.000")

INPUT FLANGE DETAILS						
ISO	FLANGE	SHAFT	RECESS	RECESS	HOLE DETAILS	KEY
	O/DIA. & THICKNESS	DIA.	DIA.	DEPTH	22.5°(OFF CENTRES)	DETAILS
F25	Ø300 x 20	Ø50.00-0.05	Ø200.10+0.10	5	8 HOLES Ø16.5 (Ø0.65")	14x9x80
	(Ø11.81" x 0.79")	(Ø1.969"-0.002")	(Ø7.878"+0.004")	(0.20")	ON Ø254.0 (Ø10.00") P.C.	(0.55"x0.35"x3.15")
FA25	Ø300 x 20	Ø50.00-0.05	Ø152.37+0.10	5	8 HOLES Ø16.5 (Ø0.65")	14x9x80
	(Ø11.81" x 0.79")	(Ø1.969"-0.002")	(Ø5.999"+0.004")	(0.20")	ON Ø254.0 (Ø10.00") P.C.	(0.55"x0.35"x3.15")

BASEPLATE DETAILS	
ISO	HOLE DETAILS (22.5° OFF CENTRES)
F35	8 HOLES M30x40 (1.57") DEEP
FA35	8 HOLES 1"UNCx40 (1.57") DEEP



IS17 GEARBOX
F25/FA25 INPUT F35/FA35 OUTPUT

DETAILS SUBJECT TO CHANGE WITHOUT PRIOR NOTICE

FOR UP TO DATE DETAILS VISIT www.rotork.com

APPROX WEIGHT 464.2 kg

DRAWING No	PUBIS17-F25-F35	9 Brown Lane West Holbeck Leeds LS12 6BH United Kingdom
ISSUE	B	
DATE	10/06/2011	