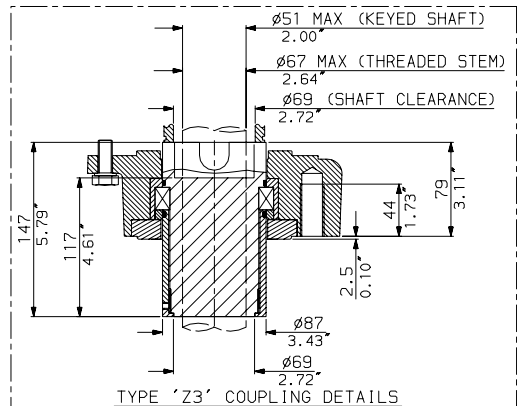
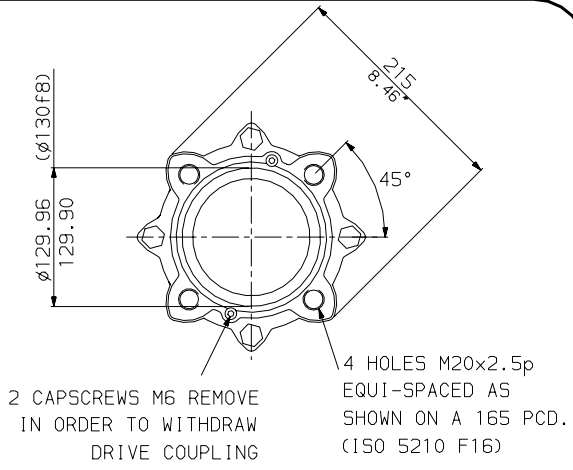


TYPE 'Z' COUPLING DETAILS



TYPE 'Z3' COUPLING DETAILS

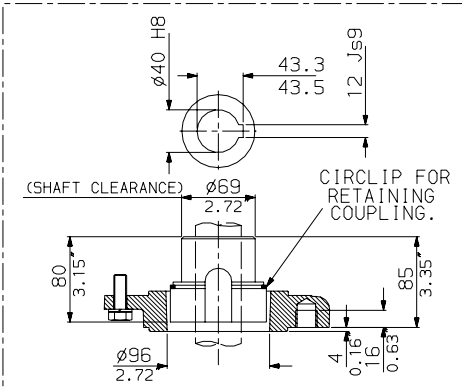
IQM35 THRUST BASES



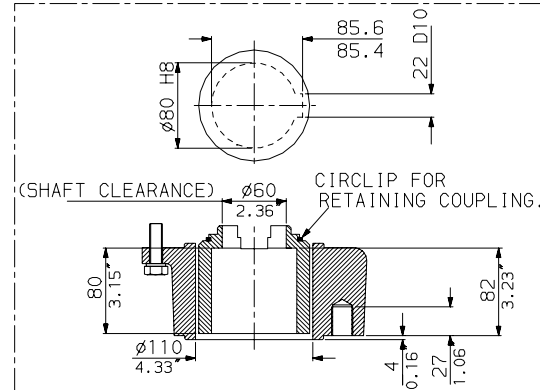
2 CAPSCREWS M6 REMOVE IN ORDER TO WITHDRAW DRIVE COUPLING

4 HOLES M20x2.5p EQUI-SPACED AS SHOWN ON A 165 PCD. (ISO 5210 F16)

IQM35 NON-THRUST BASES

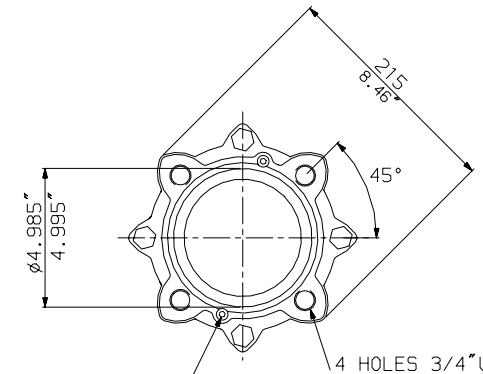


TYPE 'B3' COUPLING DETAILS



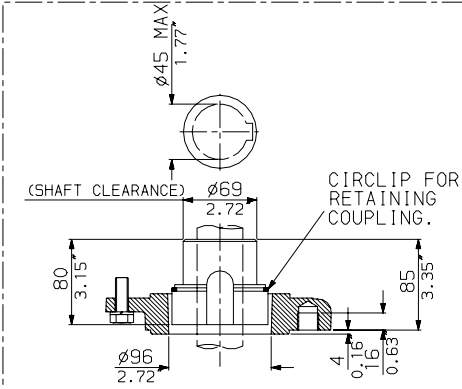
TYPE 'B1' COUPLING DETAILS

F16 BASE DETAILS FOR 'Z' COUPLINGS

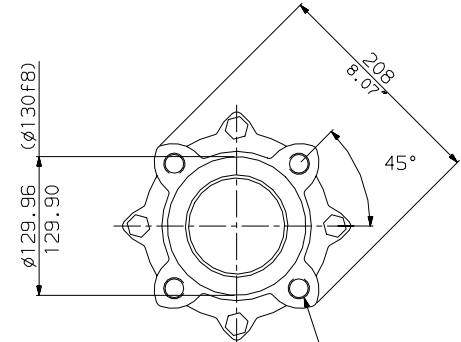


2 CAPSCREWS M6 REMOVE IN ORDER TO WITHDRAW DRIVE COUPLING

4 HOLES 3/4"UNC EQUI-SPACED AS SHOWN ON A 6.5"PCD. (MSS SP-102 FA16)

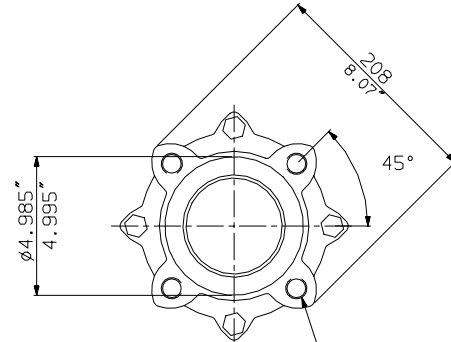


TYPE 'B4' COUPLING DETAILS



4 HOLES M20x2.5p EQUI-SPACED AS SHOWN ON A 165 PCD. (ISO 5210 F16)

F16 BASE DETAILS FOR 'B' COUPLINGS

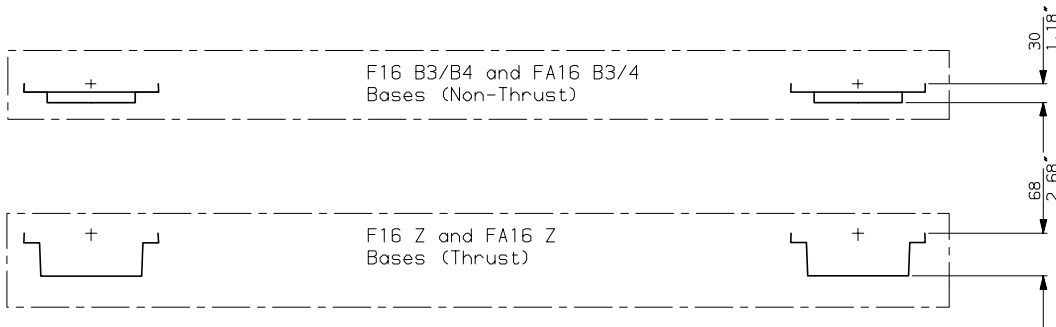
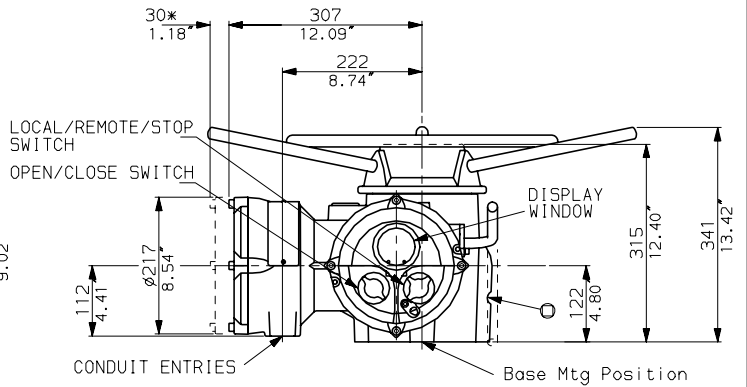
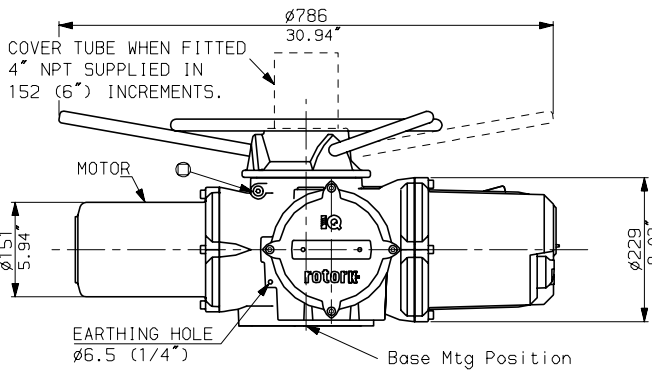
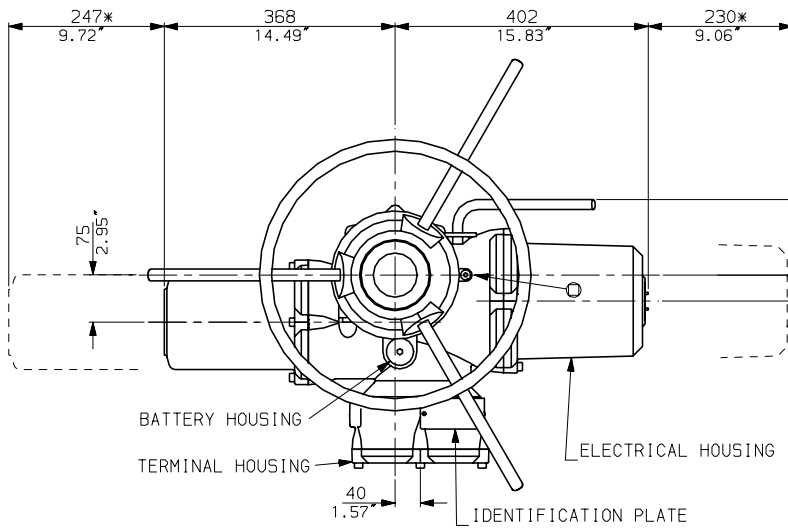


4 HOLES 3/4"UNC EQUI-SPACED AS SHOWN ON A 6.5"PCD. (MSS SP-102 FA16)

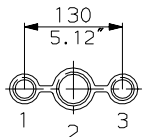
FA16 BASE DETAILS FOR 'B' COUPLINGS

FA16 BASE DETAILS FOR 'Z' COUPLINGS

# IQM35 WITH STANDARD HANDWHEEL



## CONDUIT ENTRIES



Nos.1 & 3 TAPPED 1" NPT  
 No.2 TAPPED 1 1/2" NPT  
 STANDARD ALTERNATIVES IF SPECIFIED  
 2 X M25, 1 X M40  
 2 X PG16, 1 X PG29

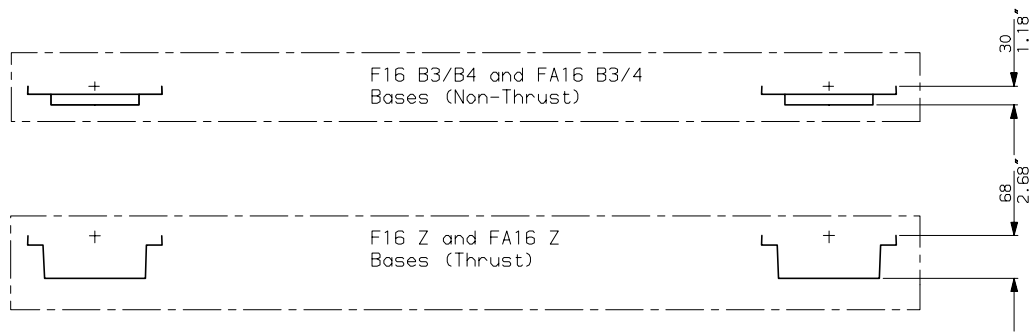
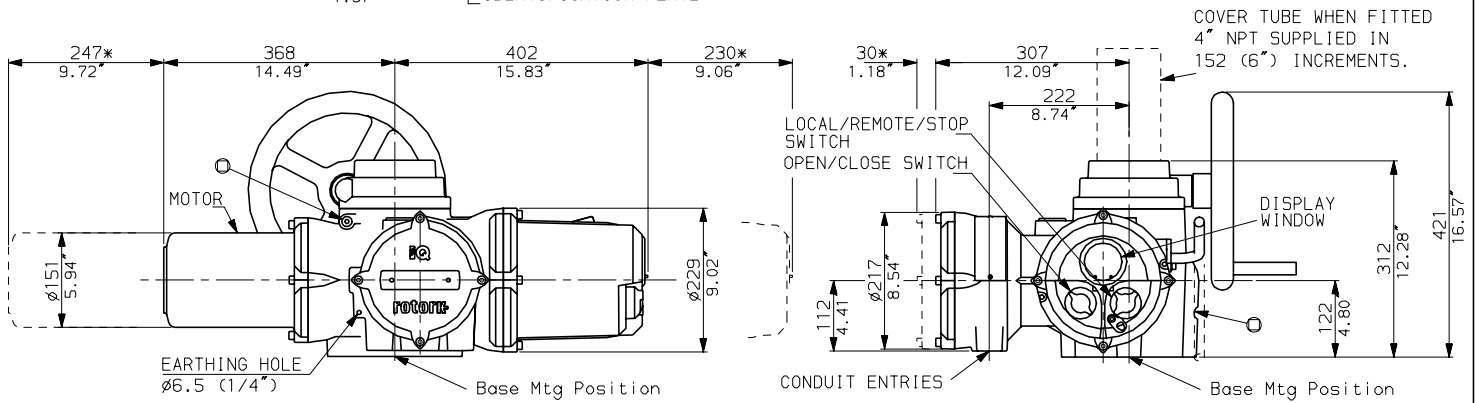
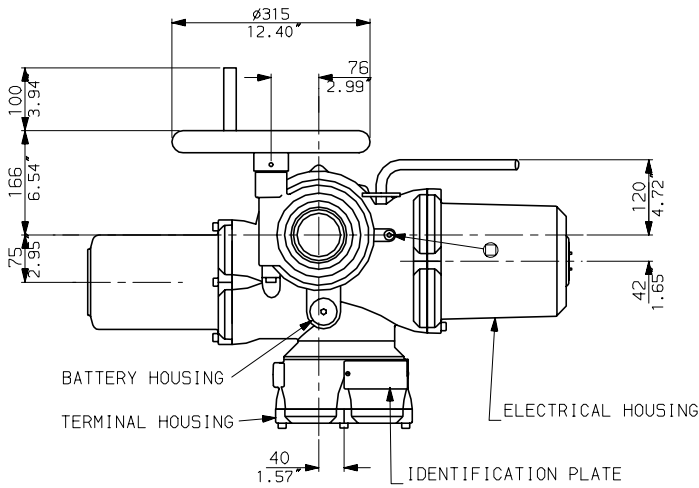
## NOTES

Two BASE options are detailed to suit the relevant Coupling arrangement.  
 The required BASE for the SIDE & END views should be loaded to position indicated.

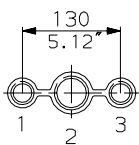
**rotork**

IQM35 (THW) DATA  
 Date 020401 Scale 1:12

IQM35 WITH OPTIONAL  
SIDE HANDWHEEL



CONDUIT ENTRIES



Nos.1 & 3 TAPPED 1" NPT  
 No.2 TAPPED 1 1/2" NPT  
 STANDARD ALTERNATIVES IF SPECIFIED  
 2 X M25, 1 X M40  
 2 X PG16, 1 X PG29

NOTES

Two BASE options are detailed to suit the relevant Coupling arrangement. The required BASE for the SIDE & END views should be loaded to position indicated.

**rotork**

IQM35 (SHW) DATA

Date 020401

Scale 1:12