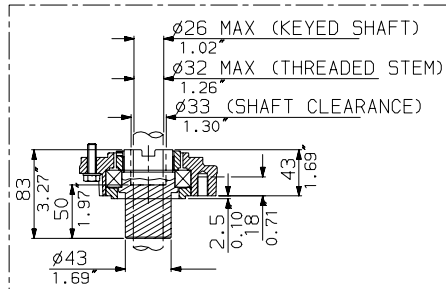
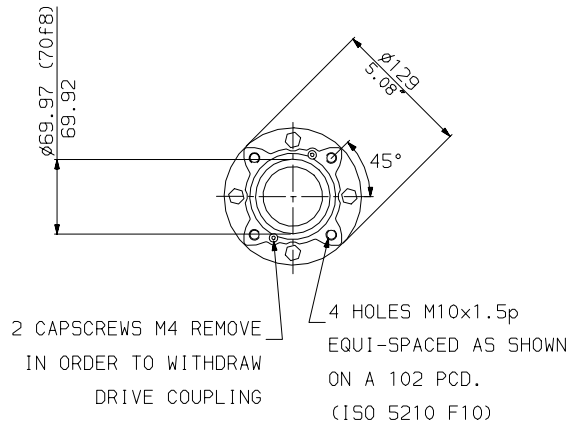


TYPE 'A' COUPLING DETAILS



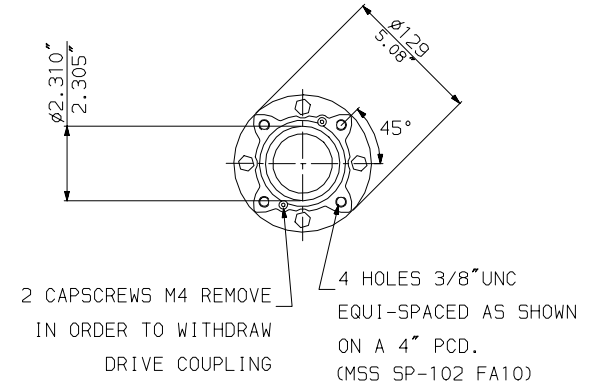
TYPE 'Z3' COUPLING DETAILS



2 CAPSCREWS M4 REMOVE
IN ORDER TO WITHDRAW
DRIVE COUPLING

4 HOLES M10x1.5p
EQUI-SPACED AS SHOWN
ON A 102 PCD.
(ISO 5210 F10)

F10 BASE DETAILS
FOR 'A' & 'Z' COUPLINGS



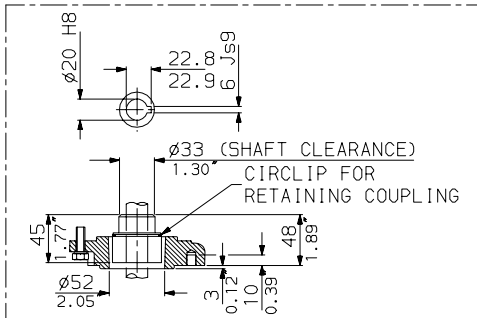
2 CAPSCREWS M4 REMOVE
IN ORDER TO WITHDRAW
DRIVE COUPLING

4 HOLES 3/8"UNC
EQUI-SPACED AS SHOWN
ON A 4" PCD.
(MSS SP-102 FA10)

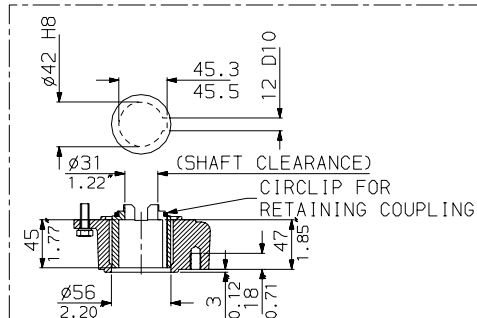
FA10 BASE DETAILS
FOR 'A' & 'Z' COUPLINGS

IQM10-12 THRUST BASES

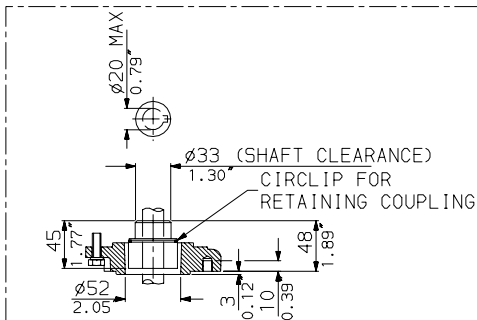
IQM10-12 NON-THRUST BASES



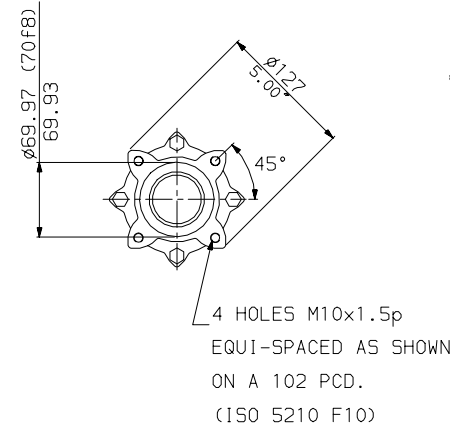
TYPE 'B3' COUPLING DETAILS



TYPE 'B1' COUPLING DETAILS

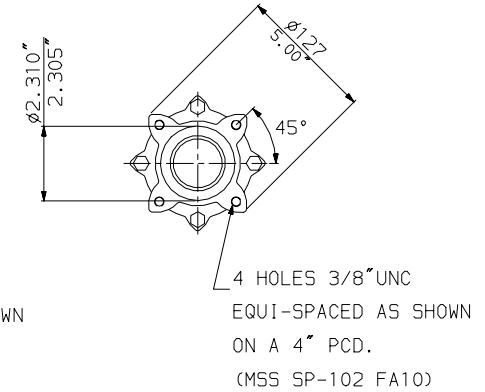


TYPE 'B4' COUPLING DETAILS



4 HOLES M10x1.5p
EQUI-SPACED AS SHOWN
ON A 102 PCD.
(ISO 5210 F10)

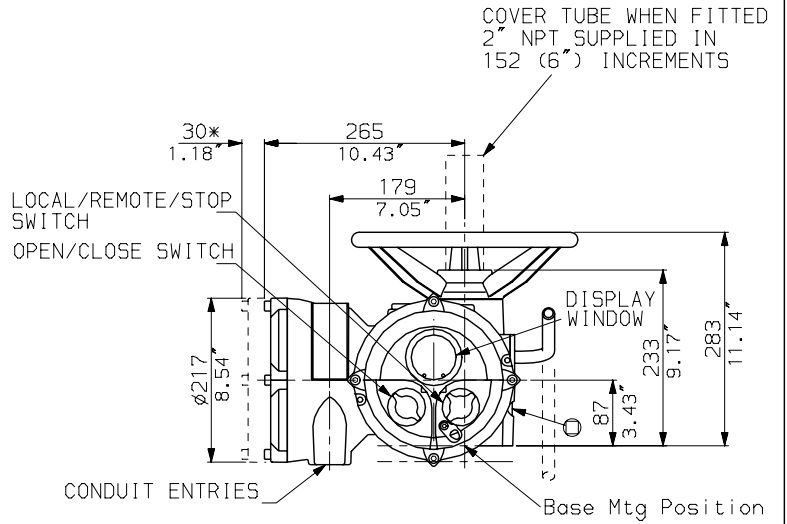
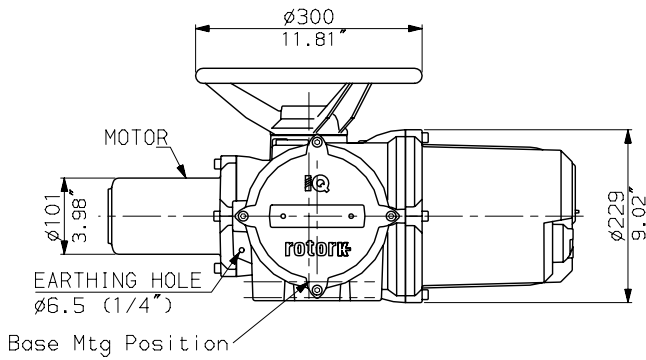
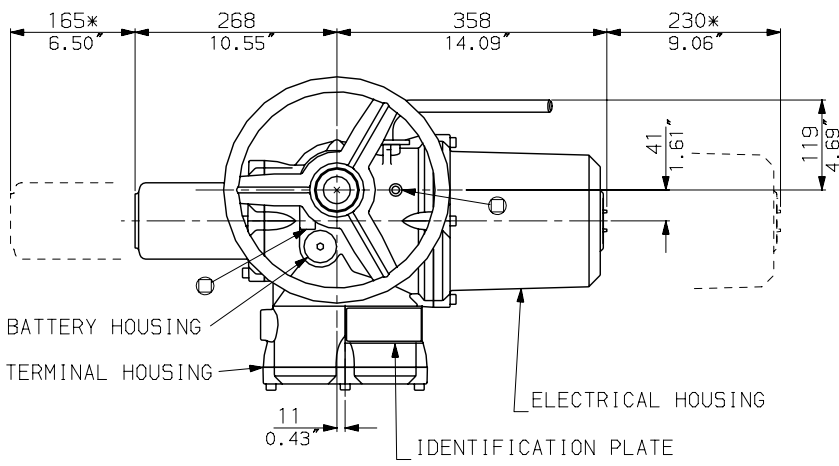
F10 BASE DETAILS
FOR 'B' COUPLINGS



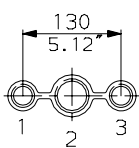
4 HOLES 3/8"UNC
EQUI-SPACED AS SHOWN
ON A 4" PCD.
(MSS SP-102 FA10)

FA10 BASE DETAILS
FOR 'B' COUPLINGS

IQM10-12 WITH
TOP HANDWHEEL



CONDUIT ENTRIES



Nos.1 & 3 TAPPED 1" NPT
No.2 TAPPED 1 1/2" NPT
STANDARD ALTERNATIVES IF SPECIFIED
2 X M25, 1 X M40
2 X PG16, 1 X PG29

NOTES

Three BASE options are detailed to suit the relevant Coupling arrangement. The required BASE for the SIDE & END views should be loaded to position indicated. (The B4 base cannot be seen due to the conduit entries).

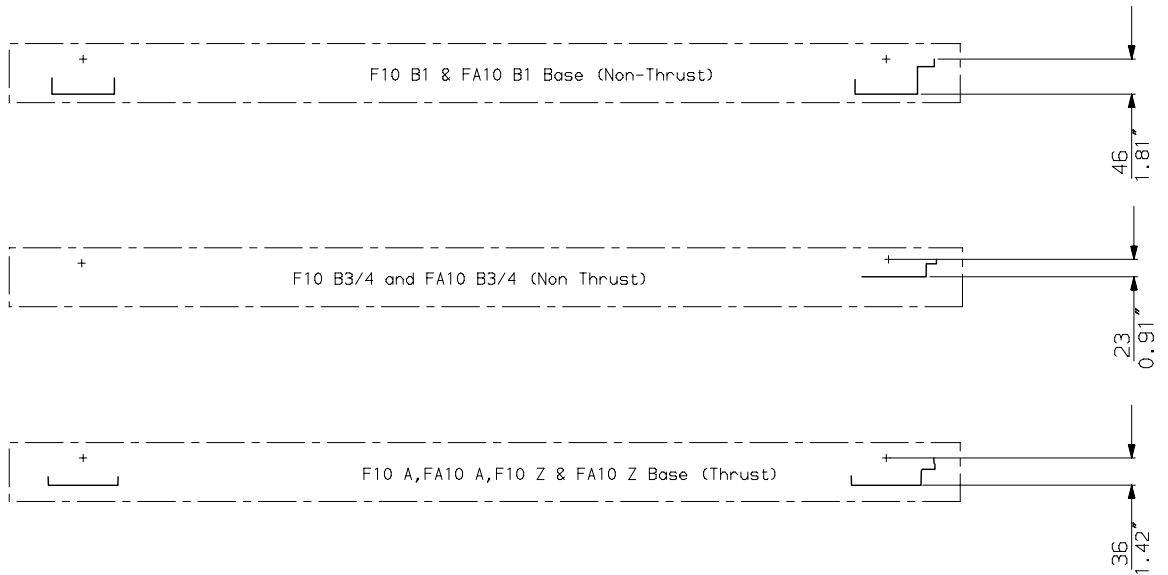
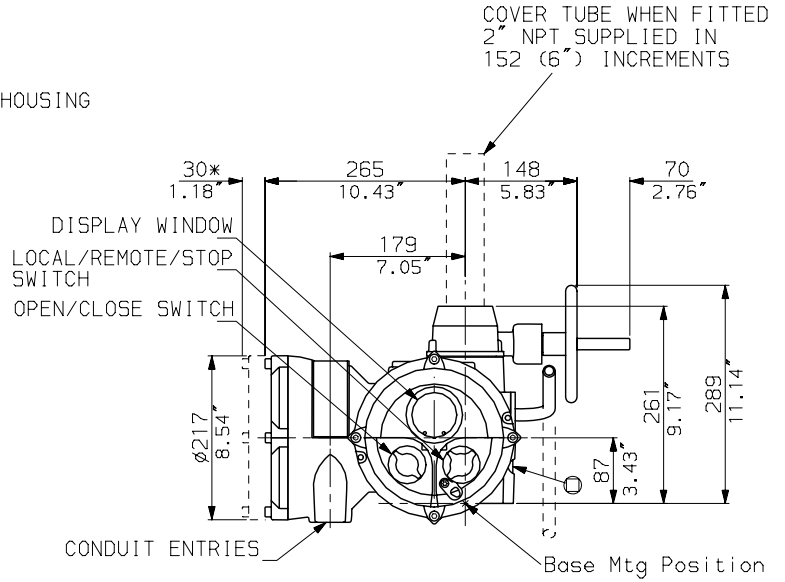
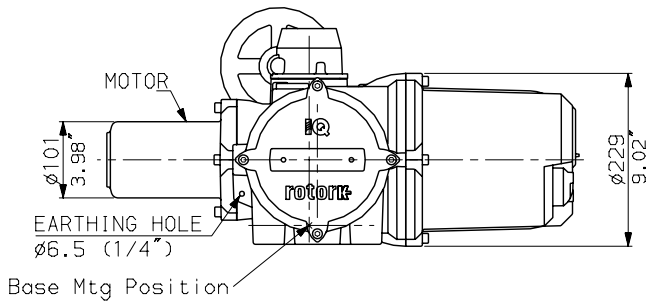
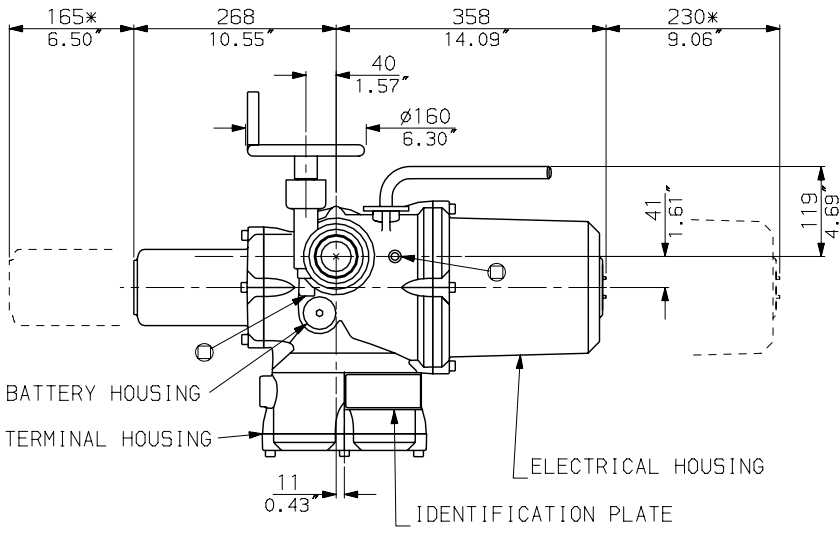
rotork

IQM10 (THW) DATA

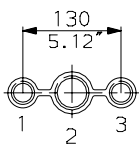
Date 140605

Scale 1:10

IQM10-12 WITH OPTIONAL
SIDE HANDWHEEL



CONDUIT ENTRIES



Nos.1 & 3 TAPPED 1" NPT
No.2 TAPPED 1 1/2" NPT
STANDARD ALTERNATIVES IF SPECIFIED
2 X M25, 1 X M40
2 X PG16, 1 X PG29

NOTES

Three BASE options are detailed to suit the relevant Coupling arrangement. The required BASE for the SIDE & END views should be loaded to position indicated. (The B4 base cannot be seen due to the conduit entries).

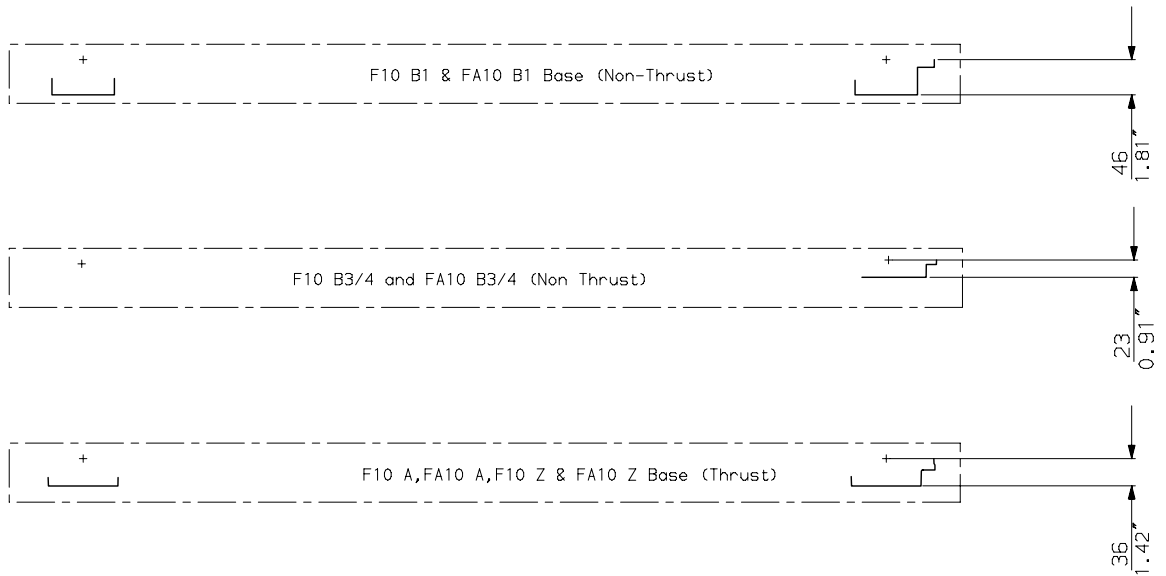
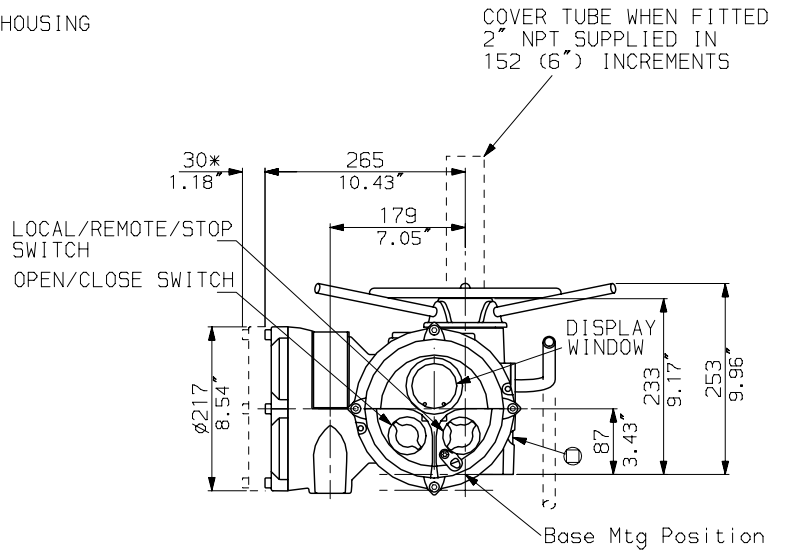
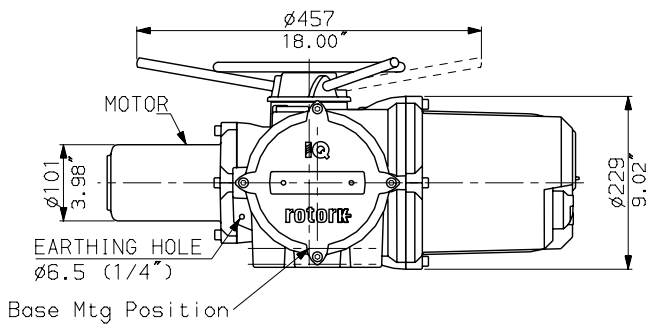
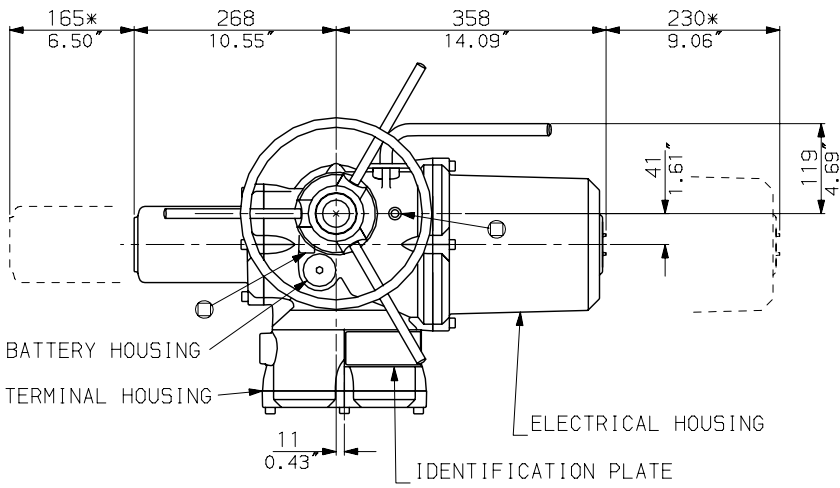
rotork

IQM10 (SHW) DATA

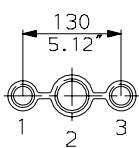
Date 140605

Scale 1:10

IQM10-12 WITH OPTIONAL
LARGE TOP HANDWHEEL



CONDUIT ENTRIES



Nos.1 & 3 TAPPED 1" NPT
No.2 TAPPED 1 1/2" NPT
STANDARD ALTERNATIVES IF SPECIFIED
2 X M25, 1 X M40
2 X PG16, 1 X PG29

NOTES

Three BASE options are detailed to suit the relevant Coupling arrangement. The required BASE for the SIDE & END views should be loaded to position indicated. (The B4 base cannot be seen due to the conduit entries).

rotork

IQM10 (LTHW) DATA

Date 140605

Scale 1:10