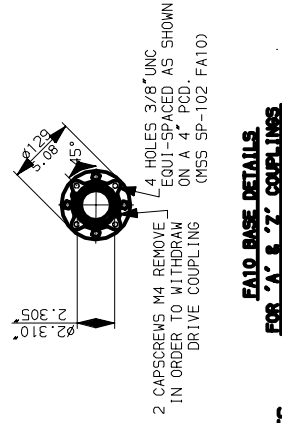
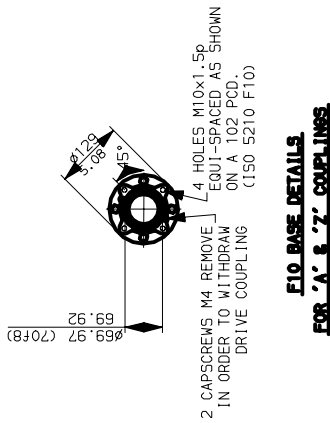
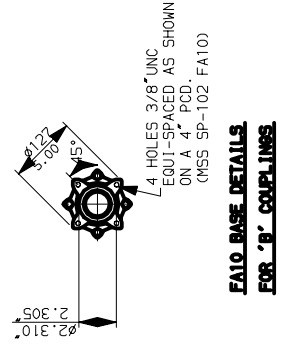
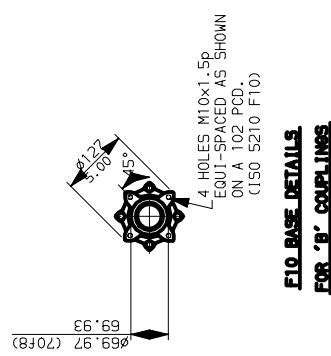
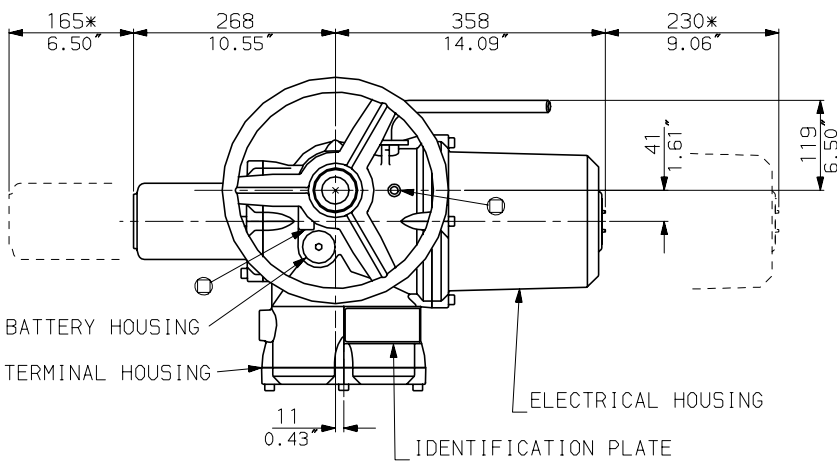


1QM10-12 NON-THRUST BASES

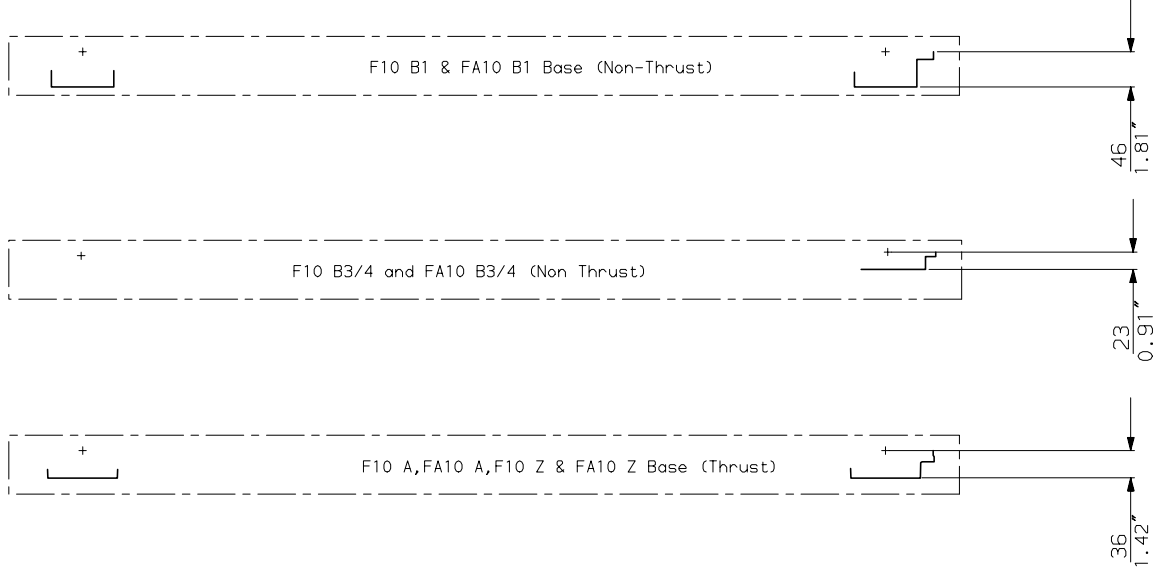
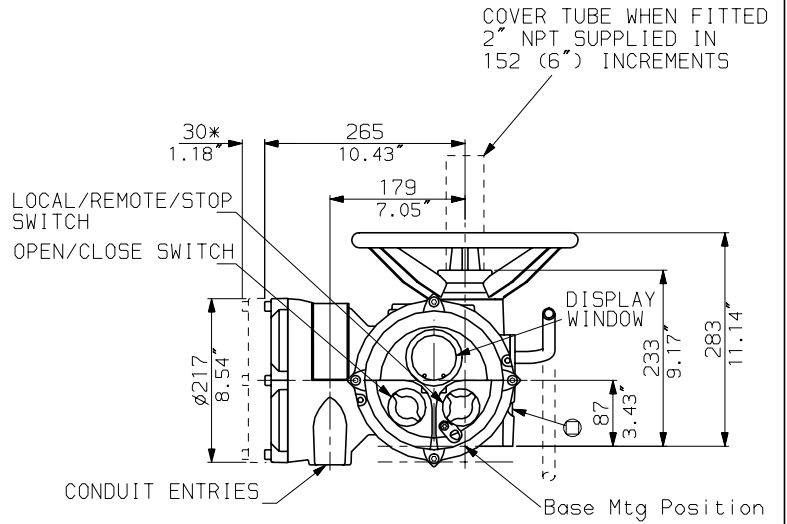
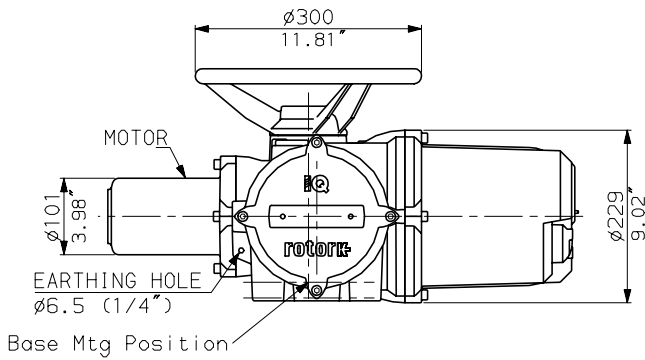


1QM10-12 THRUST BASES

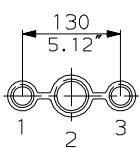




IQM10-12 WITH TOP HANDWHEEL



CONDUIT ENTRIES



Nos.1 & 3 TAPPED 1" NPT
 No.2 TAPPED 1 1/2" NPT
 STANDARD ALTERNATIVES IF SPECIFIED
 2 X M25, 1 X M40
 2 X PG16, 1 X PG29

NOTES

Three BASE options are detailed to suit the relevant Coupling arrangement. The required BASE for the SIDE & END views should be loaded to position indicated. (The B4 base cannot be seen due to the conduit entries).

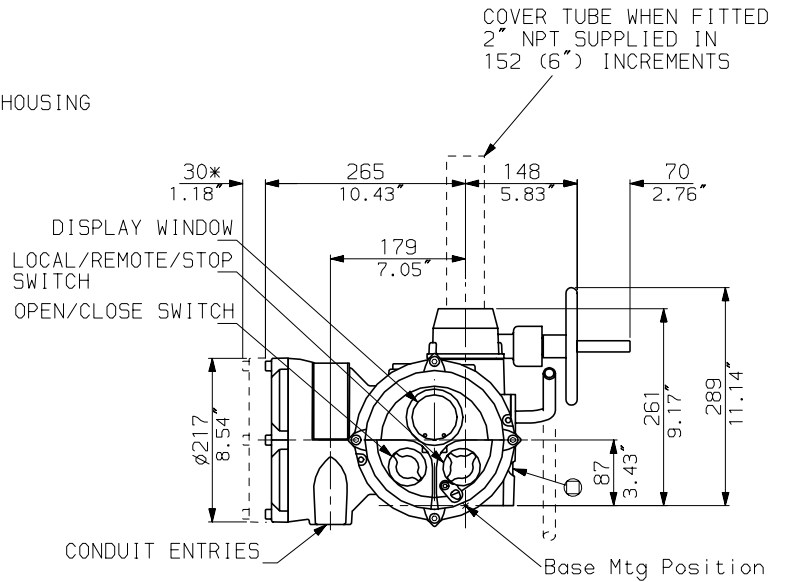
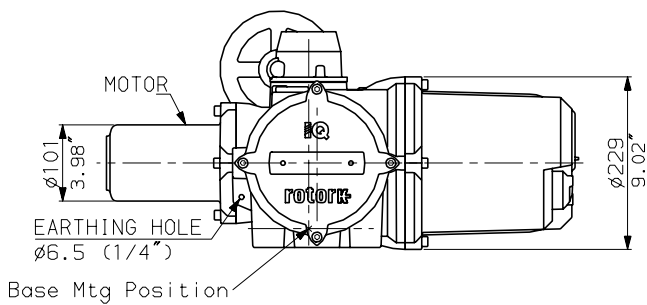
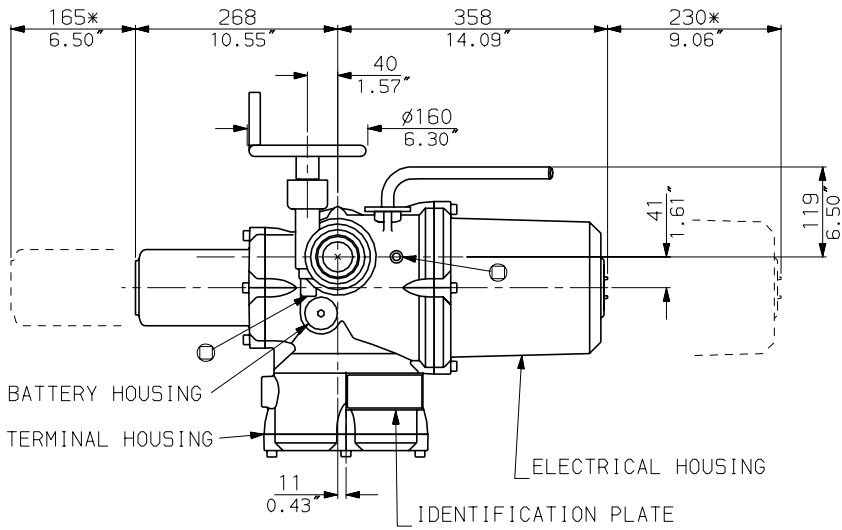
rotork

IQM10 (THW) DATA

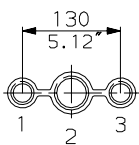
Date 300301

Scale 1:10

IQM10-12 WITH OPTIONAL
SIDE HANDWHEEL



CONDUIT ENTRIES



Nos.1 & 3 TAPPED 1" NPT
No.2 TAPPED 1 1/2" NPT
STANDARD ALTERNATIVES IF SPECIFIED
2 X M25, 1 X M40
2 X PG16, 1 X PG29

NOTES

Three BASE options are detailed to suit the relevant Coupling arrangement. The required BASE for the SIDE & END views should be loaded to position indicated. (The B4 base cannot be seen due to the conduit entries).

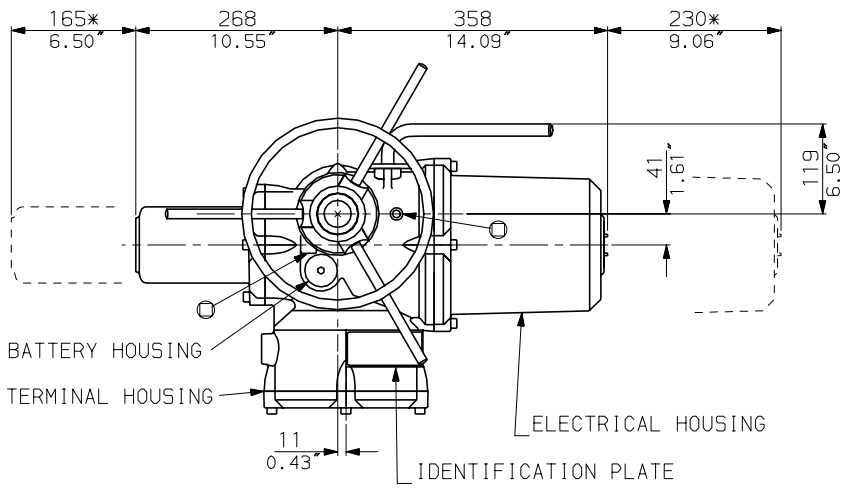
rotork

IQM10 (SHW) DATA

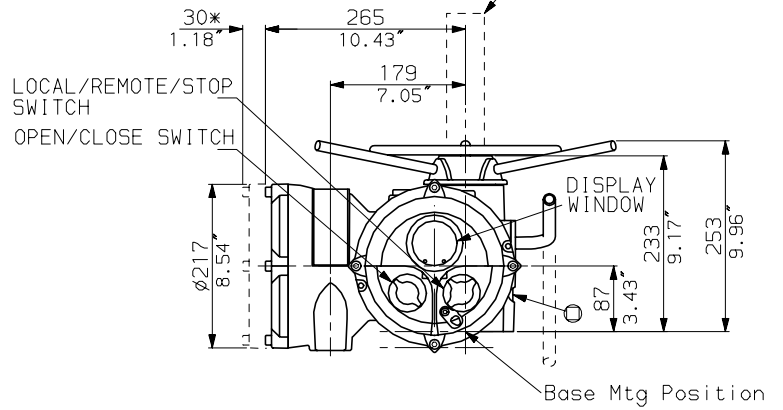
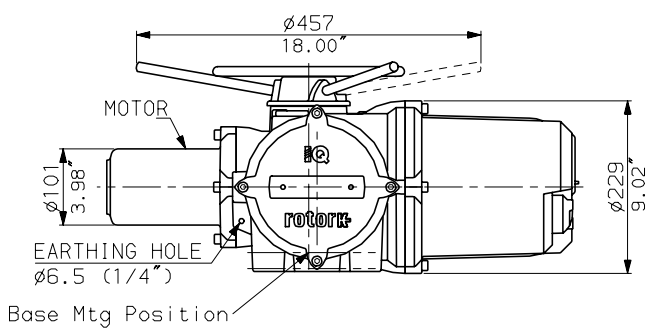
Date 300301

Scale 1:10

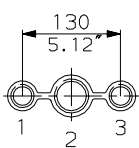
IQM10-12 WITH OPTIONAL
LARGE TOP HANDWHEEL



COVER TUBE WHEN FITTED
2" NPT SUPPLIED IN
152 (6") INCREMENTS



CONDUIT ENTRIES



Nos.1 & 3 TAPPED 1" NPT
No.2 TAPPED 1 1/2" NPT
STANDARD ALTERNATIVES IF SPECIFIED
2 X M25, 1 X M40
2 X PG16, 1 X PG29

NOTES

Three BASE options are detailed to suit the relevant Coupling arrangement. The required BASE for the SIDE & END views should be loaded to position indicated. (The B4 base cannot be seen due to the conduit entries).

rotork

IQM10 (LTHW) DATA

Date 300301

Scale 1:10