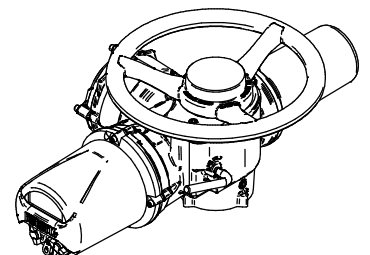
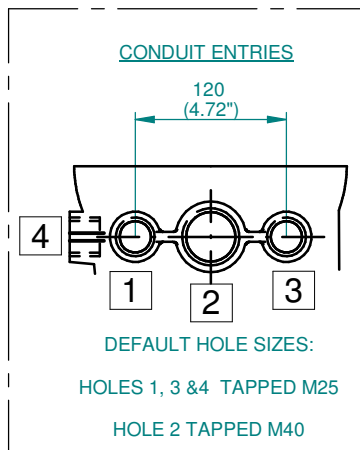
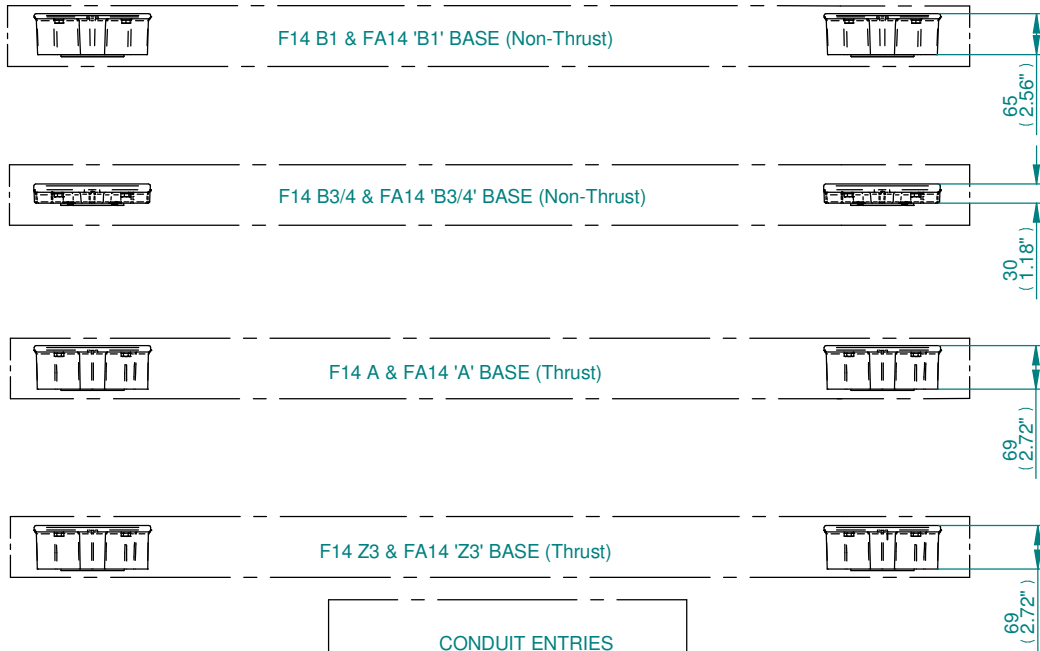
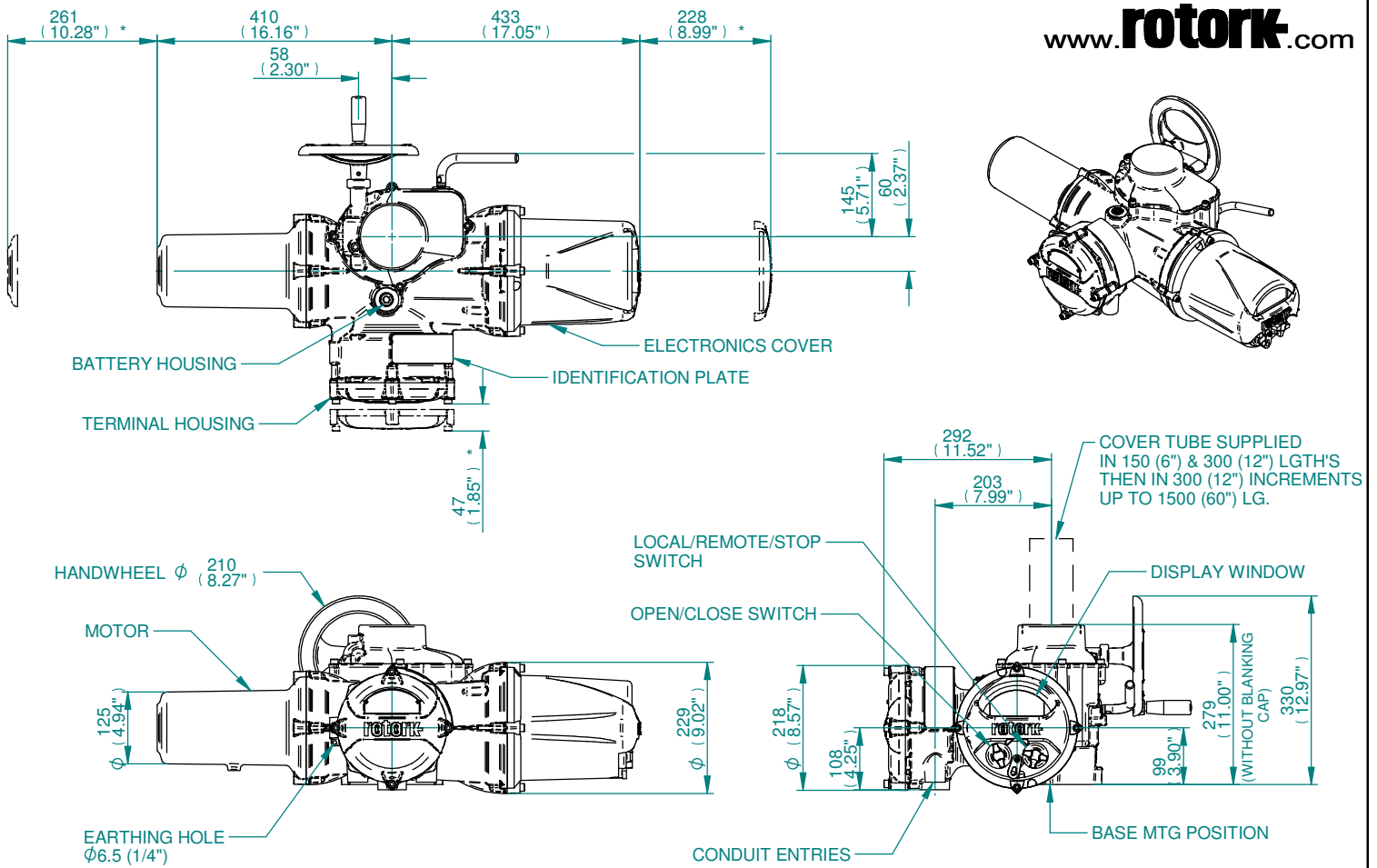


**NOTES**

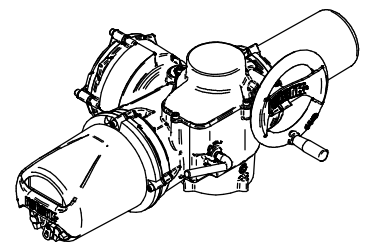
- FOUR BASE OPTIONS ARE DETAILED TO SUIT THE RELEVANT COUPLING ARRANGEMENT.
- THE REQUIRED BASE FOR THE SIDE & END VIEWS SHOULD BE LOADED TO MTG POSITION INDICATED.
- \*\*1 REMOVAL ALLOWANCE REQUIRED.

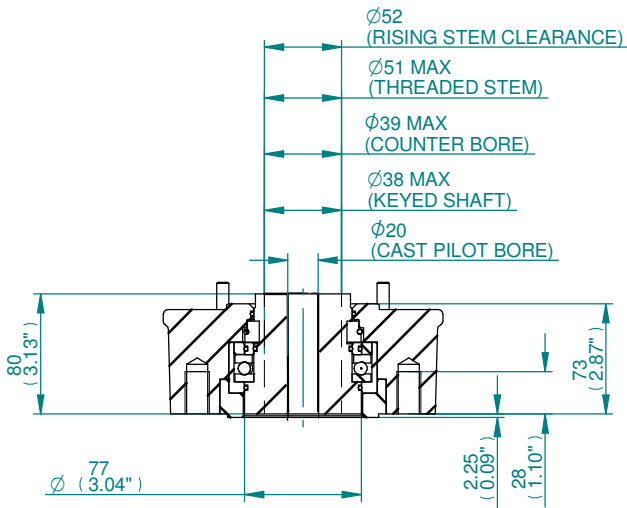




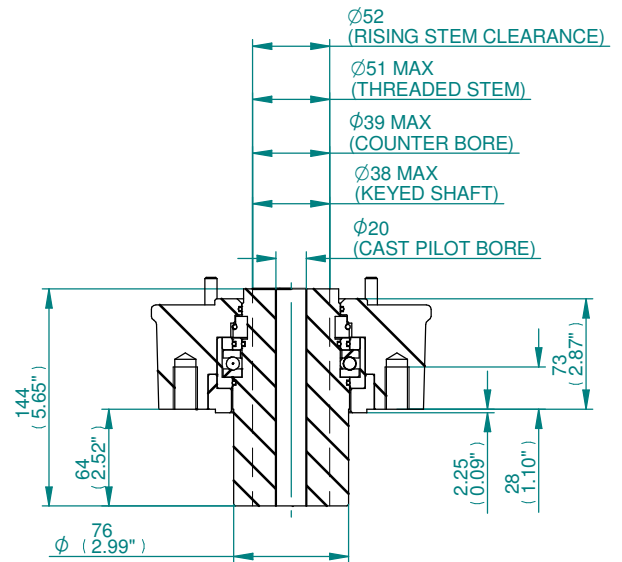
**NOTES**

- FOUR BASE OPTIONS ARE DETAILED TO SUIT THE RELEVANT COUPLING ARRANGEMENT.
- THE REQUIRED BASE FOR THE SIDE & END VIEWS SHOULD BE LOADED TO MTG POSITION INDICATED.
- \*1\* REMOVAL ALLOWANCE REQUIRED.



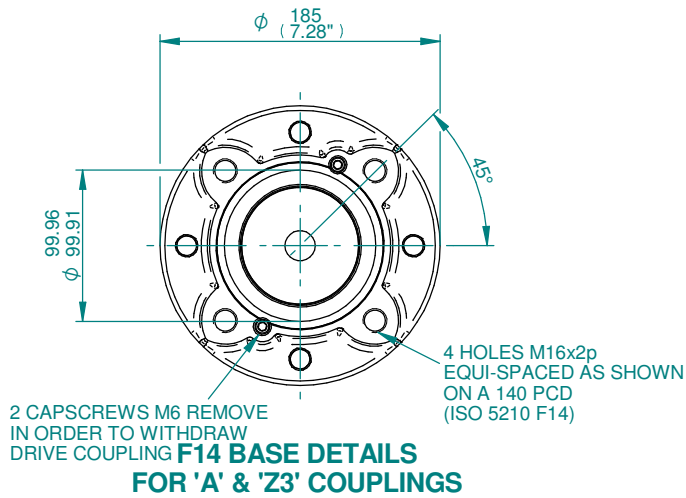


TYPICAL 'A' COUPLING DETAILS

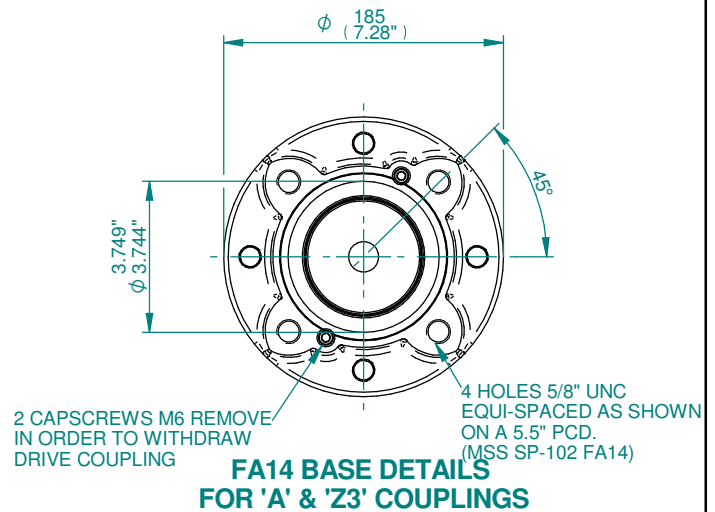


TYPICAL 'Z3' COUPLING DETAILS

NOTE : COUPLINGS WITHOUT PILOT BORE AVAILABLE IF SPECIFIED WITH ORDER.

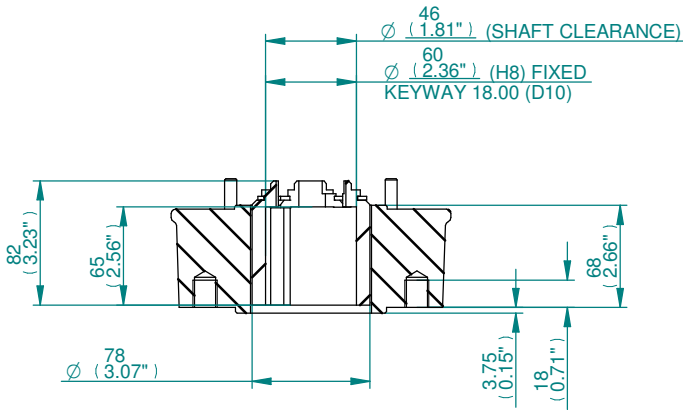


**F14 BASE DETAILS FOR 'A' & 'Z3' COUPLINGS**

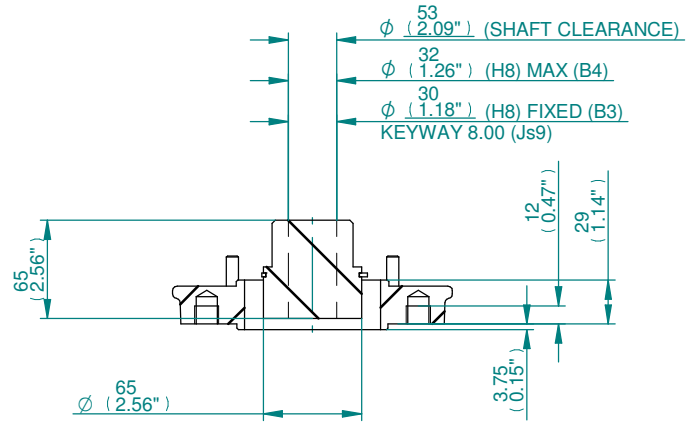


**FA14 BASE DETAILS FOR 'A' & 'Z3' COUPLINGS**

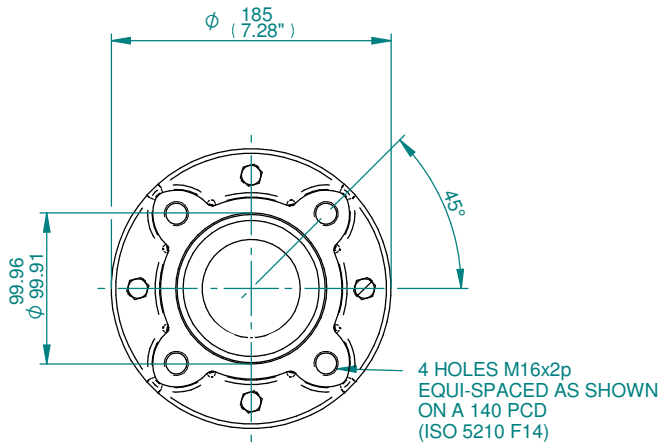
**IQ3 SIZE 20-25 THRUST BASES**



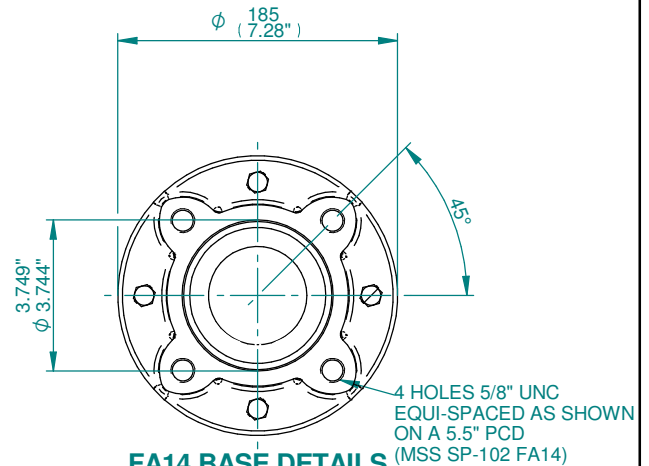
TYPICAL 'B1' COUPLING DETAILS



TYPICAL 'B3/B4' COUPLING DETAILS



F14 BASE DETAILS  
FOR 'B1' & 'B3/B4' COUPLINGS



FA14 BASE DETAILS  
FOR 'B1' & 'B3/B4' COUPLINGS

**IQ3 SIZE 20-25  
NON-THRUST BASES**