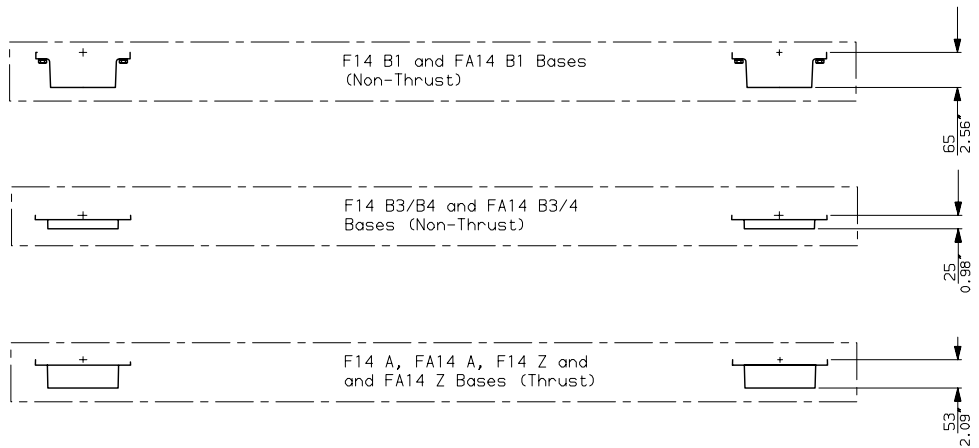
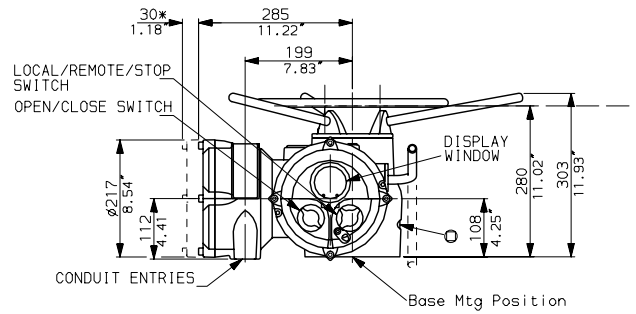
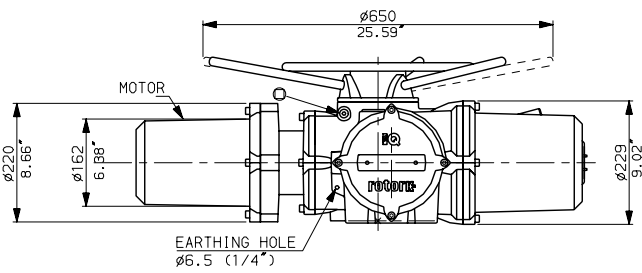
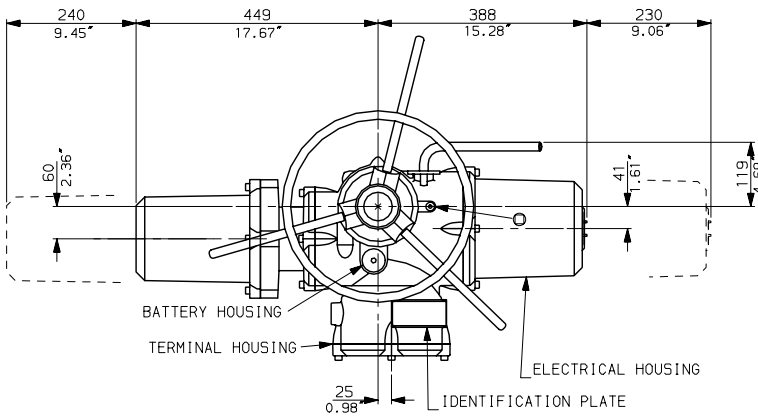
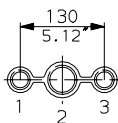


# IQ20 DC WITH STANDARD HANDWHEEL



## CONDUIT ENTRIES



Nos.1 & 3 TAPPED 1" NPT  
No.2 TAPPED 1 1/2" NPT  
STANDARD ALTERNATIVES IF SPECIFIED  
2 X M25, 1 X M40  
2 X PG16, 1 X PG29

## NOTES

Three BASE options are detailed to suit the relevant Coupling arrangement.  
The required BASE for the SIDE & END views should be loaded to position indicated.

**rotork**

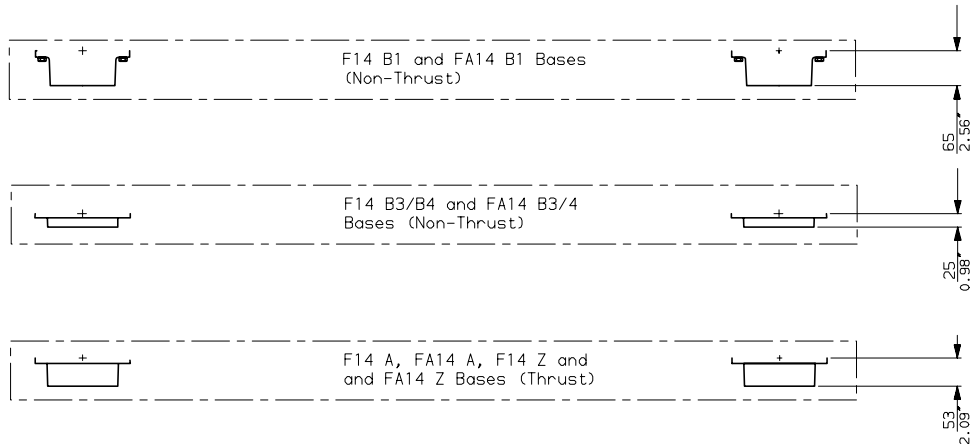
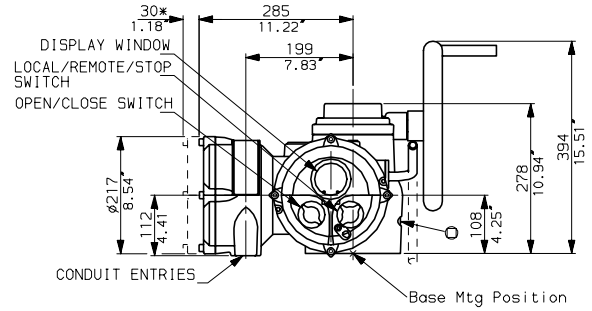
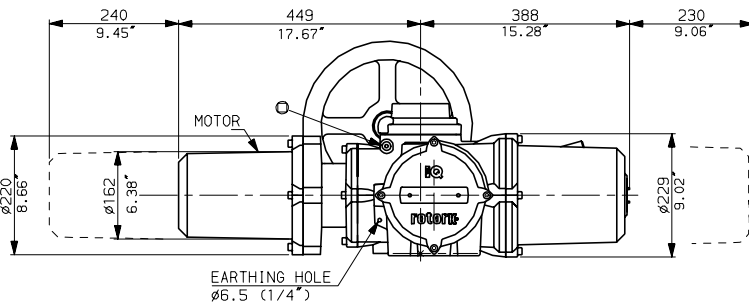
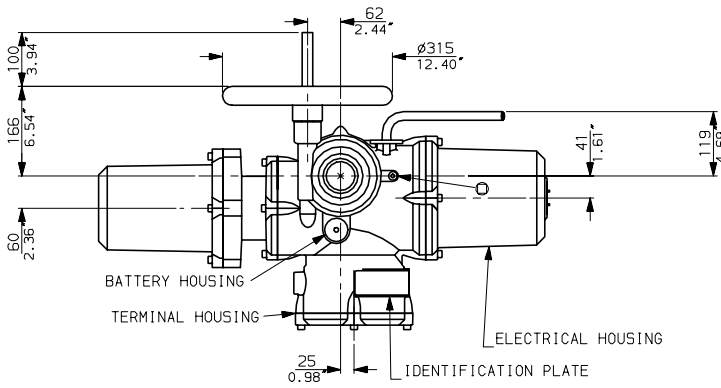
Rotork Controls Ltd.  
Bath, England BA1 3JQ  
Bath (01225) 733200

IQ20 DC (THW) DATA

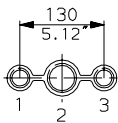
Date 231104

Scale 1:12

# IQ20 DC WITH OPTIONAL SIDE HANDWHEEL



## CONDUIT ENTRIES



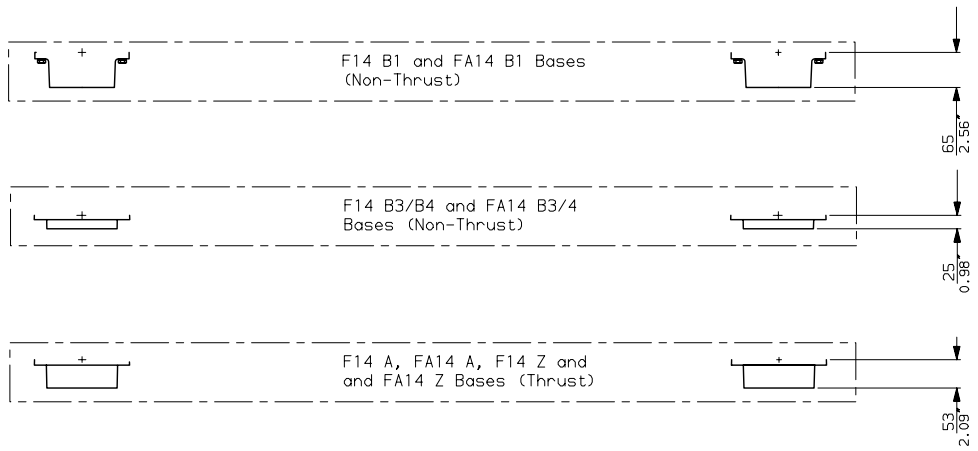
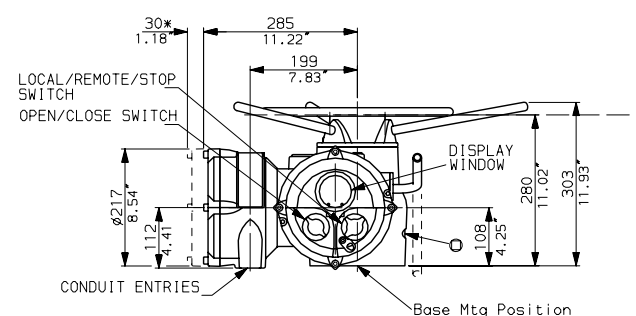
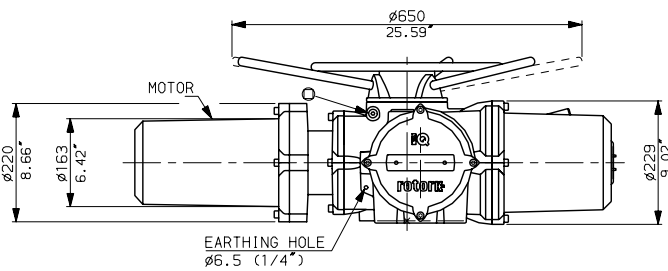
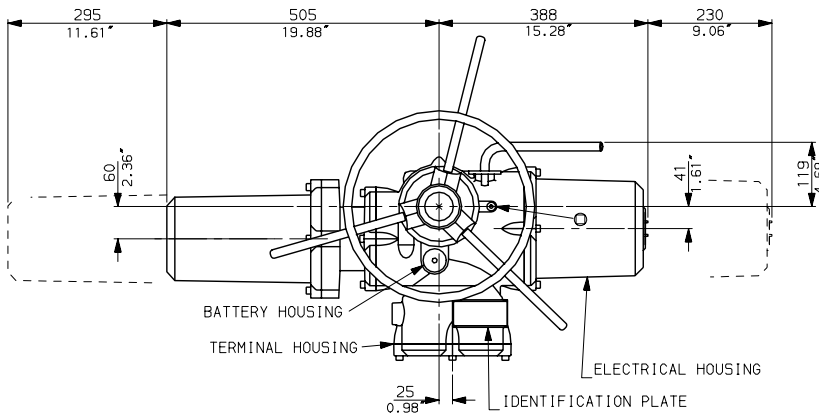
Nos.1 & 3 TAPPED 1" NPT  
 No.2 TAPPED 1 1/2" NPT  
 STANDARD ALTERNATIVES IF SPECIFIED  
 2 X M25, 1 X M40  
 2 X PG16, 1 X PG29

## NOTES

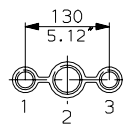
Three BASE options are detailed to suit the relevant Coupling arrangement. The required BASE for the SIDE & END views should be loaded to position indicated.

<b>rotork</b>	Rotork Controls Ltd. Bath, England BA1 3JQ Bath (01225) 733200
	IQ20 DC (SHW) DATA
	Date 150104 Scale 1:12

# IQ25 DC WITH STANDARD HANDWHEEL



### CONDUIT ENTRIES



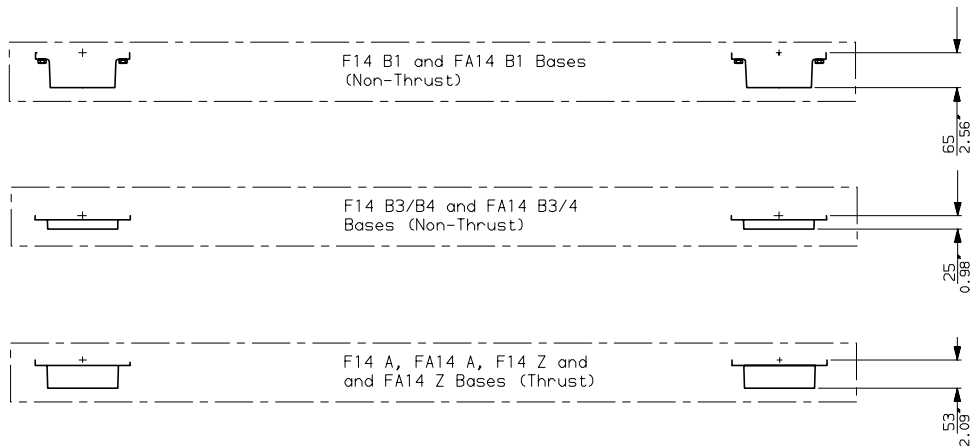
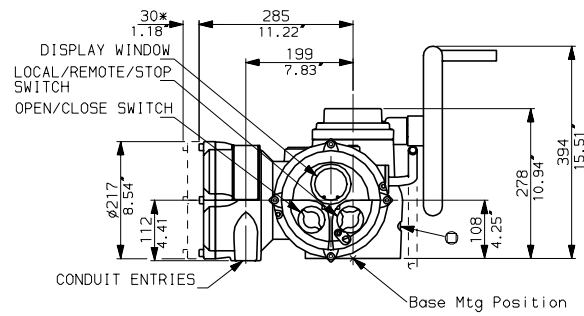
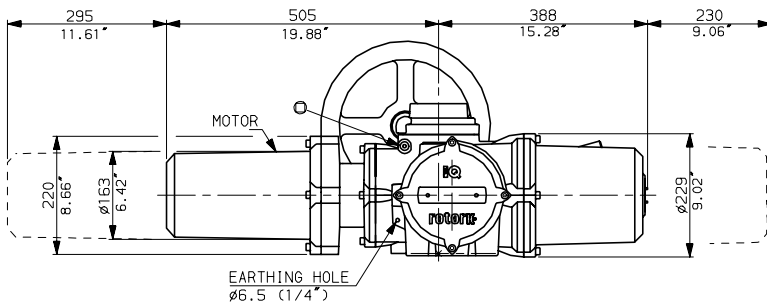
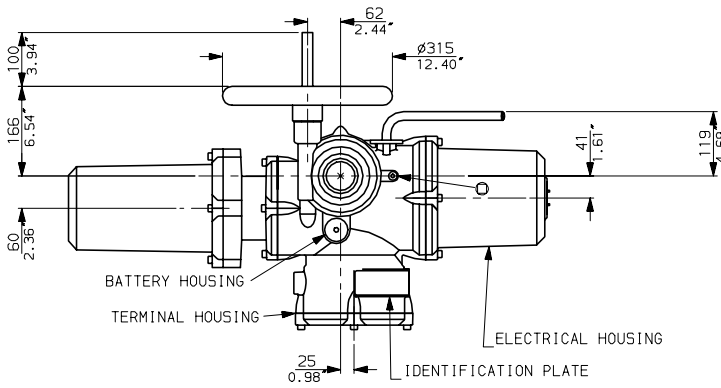
Nos.1 & 3 TAPPED 1" NPT  
 No.2 TAPPED 1 1/2" NPT  
 STANDARD ALTERNATIVES IF SPECIFIED  
 2 X M25, 1 X M40  
 2 X PG16, 1 X PG29

### NOTES

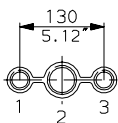
Three BASE options are detailed to suit the relevant Coupling arrangement. The required BASE for the SIDE & END views should be loaded to position indicated.

<b>rotork</b>	Rotork Controls Ltd. Bath, England BA1 3JQ Bath (01225) 733200
	IQ25 DC (THW) DATA Date 231104 Scale 1:12

# IQ25 DC WITH OPTIONAL SIDE HANDWHEEL



## CONDUIT ENTRIES



Nos.1 & 3 TAPPED 1" NPT  
 No.2 TAPPED 1 1/2" NPT  
 STANDARD ALTERNATIVES IF SPECIFIED  
 2 X M25, 1 X M40  
 2 X PG16, 1 X PG29

## NOTES

Three BASE options are detailed to suit the relevant Coupling arrangement. The required BASE for the SIDE & END views should be loaded to position indicated.

**rotork**

Rotork Controls Ltd.  
 Bath, England BA1 3JQ  
 Bath (01225) 733200

IQ25 DC (SHW) DATA

Date 150104

Scale 1:12