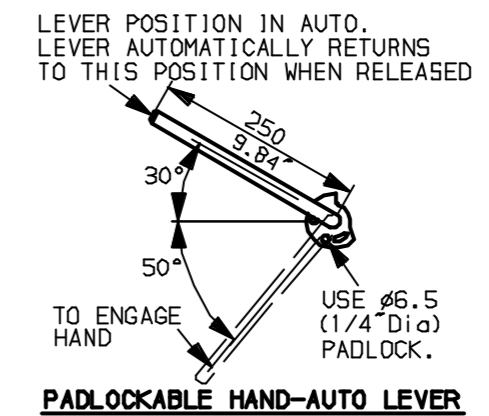
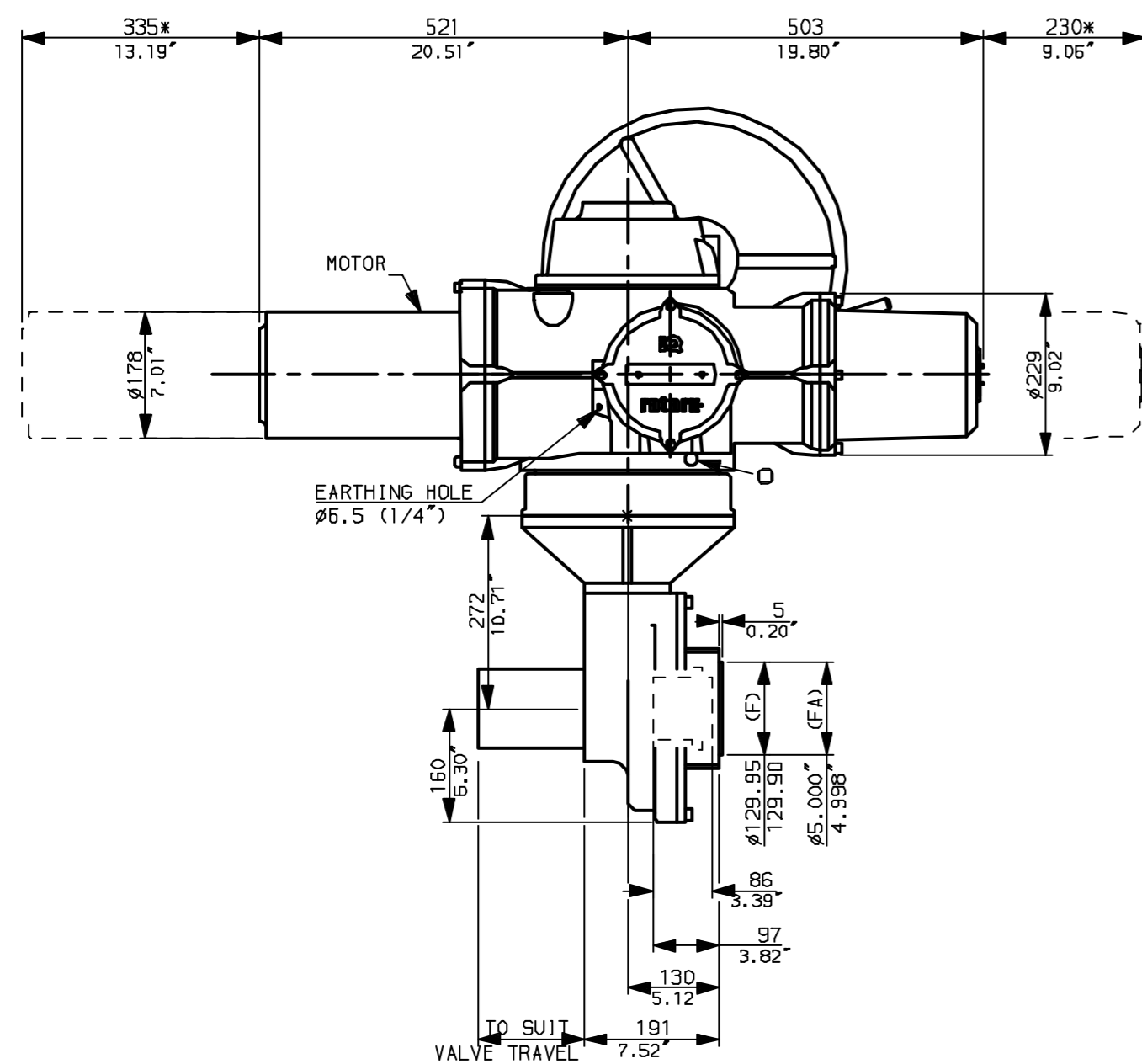
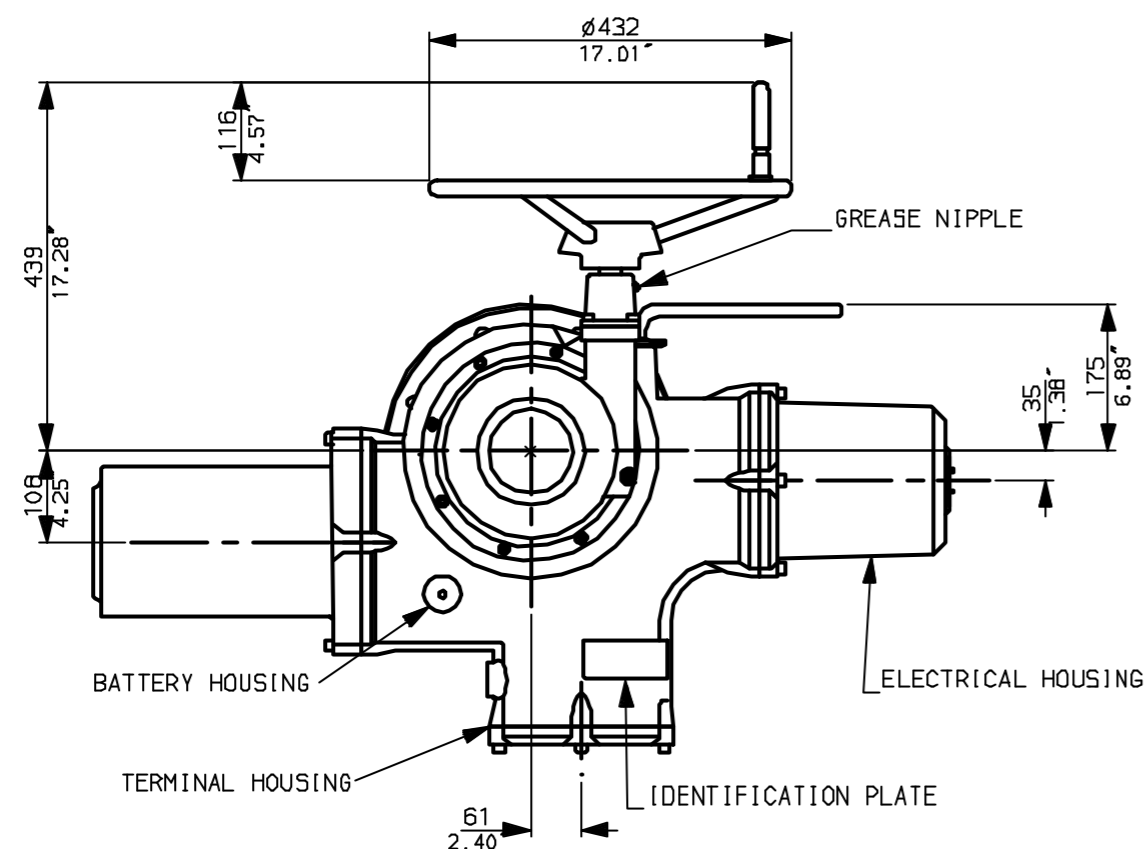
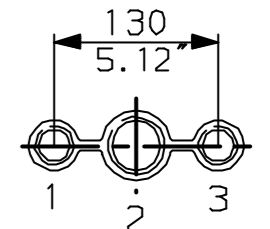


G
F
E
D
C
B
A

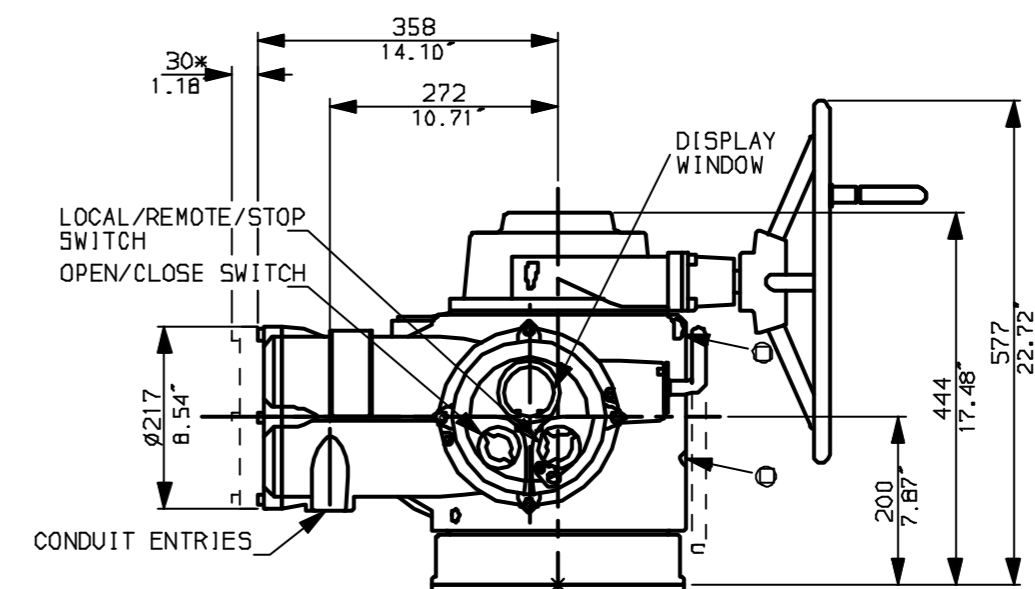


NOTES:
 * DIMENSIONS WITH '*' INDICATE COVER REMOVAL ALLOWANCE
 NETT WEIGHT = 270kg (594 lbs)
 ○ = OIL FILLER/DRAIN PLUG
 THE INTERFACE PROVIDED FOR MOUNTING THE ACTUATOR OR SECOND STAGE GEARBOX ONTO THE VALVE SHOULD CONFORM TO GOOD ENGINEERING PRACTICES, ENSURING ADEQUATELY TOLERANCED LIMITS FOR PARALLELISM, PERPENDICULARITY AND CONCENTRICITY.

CONDUIT ENTRIES (N.T.S)



Nos.1 & 3 TAPPED 1" NPT
 No.2 TAPPED 1 1/2" NPT
 STD ALTERNATIVES IF SPECIFIED
 2 X M25, 1 X M40
 2 X PG16, 1 X PG29



"F" version

4 HOLES TAPPED M20x25 DP
 EQUI-SPACED ON A 165 PCD
 (1505210 F16).

"FA" version

4 HOLES TAPPED 3/4" UNC
 x1" dp EQUI-SPACED ON A
 6.5" PCD (MSS SP102-FA16).

$\phi 25$ SLAVE PILOT BORE
 M/C IN OUTPUT SLEEVE) $\phi 73$ MAX
 2.87"



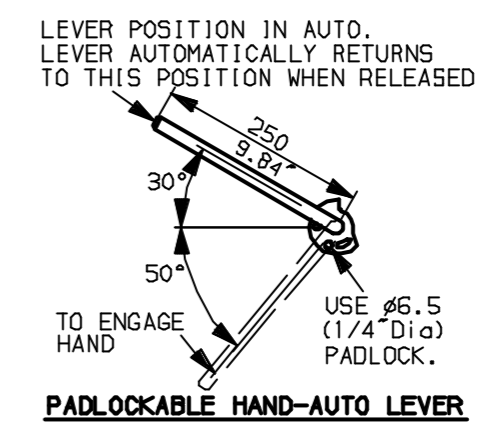
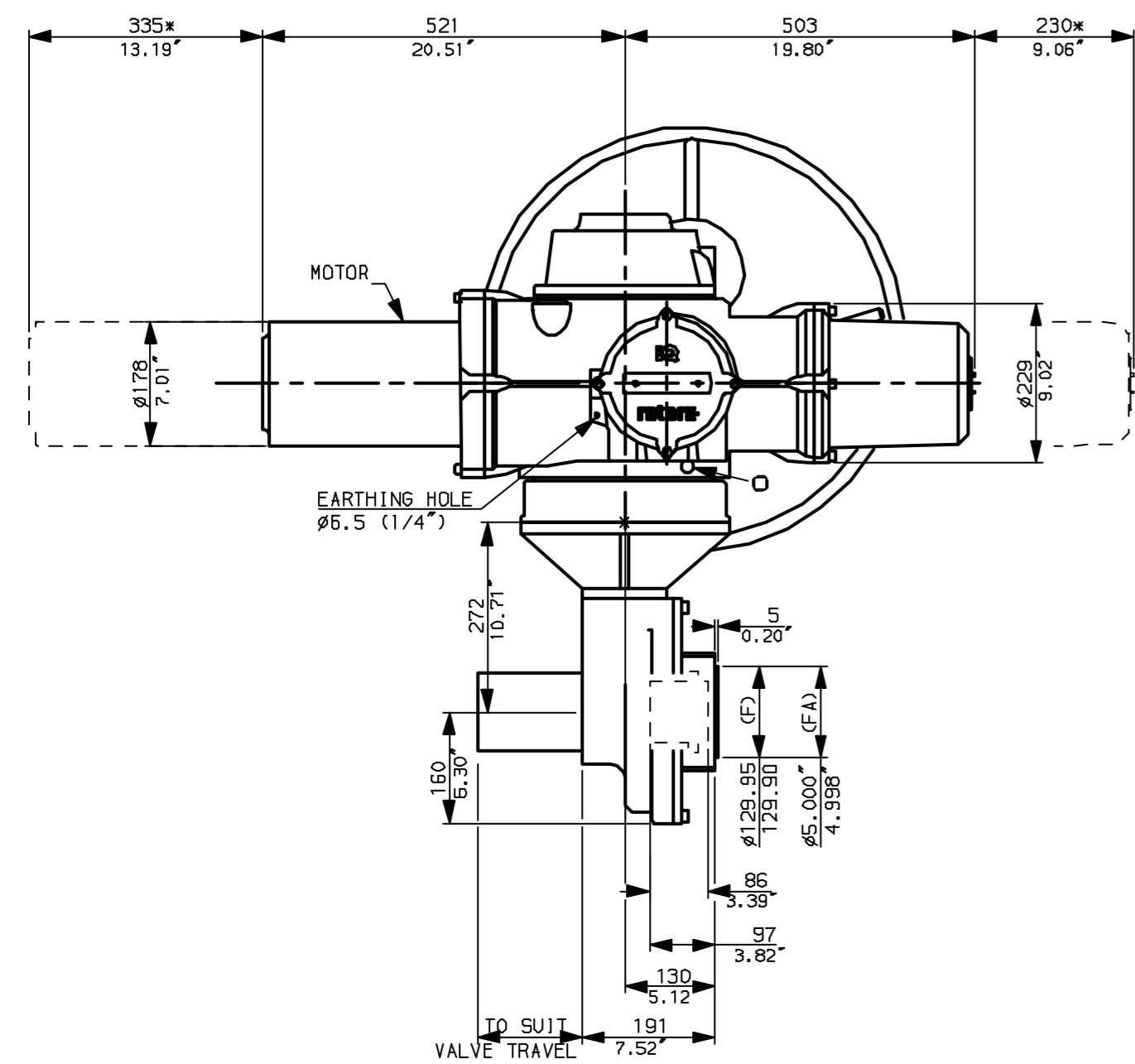
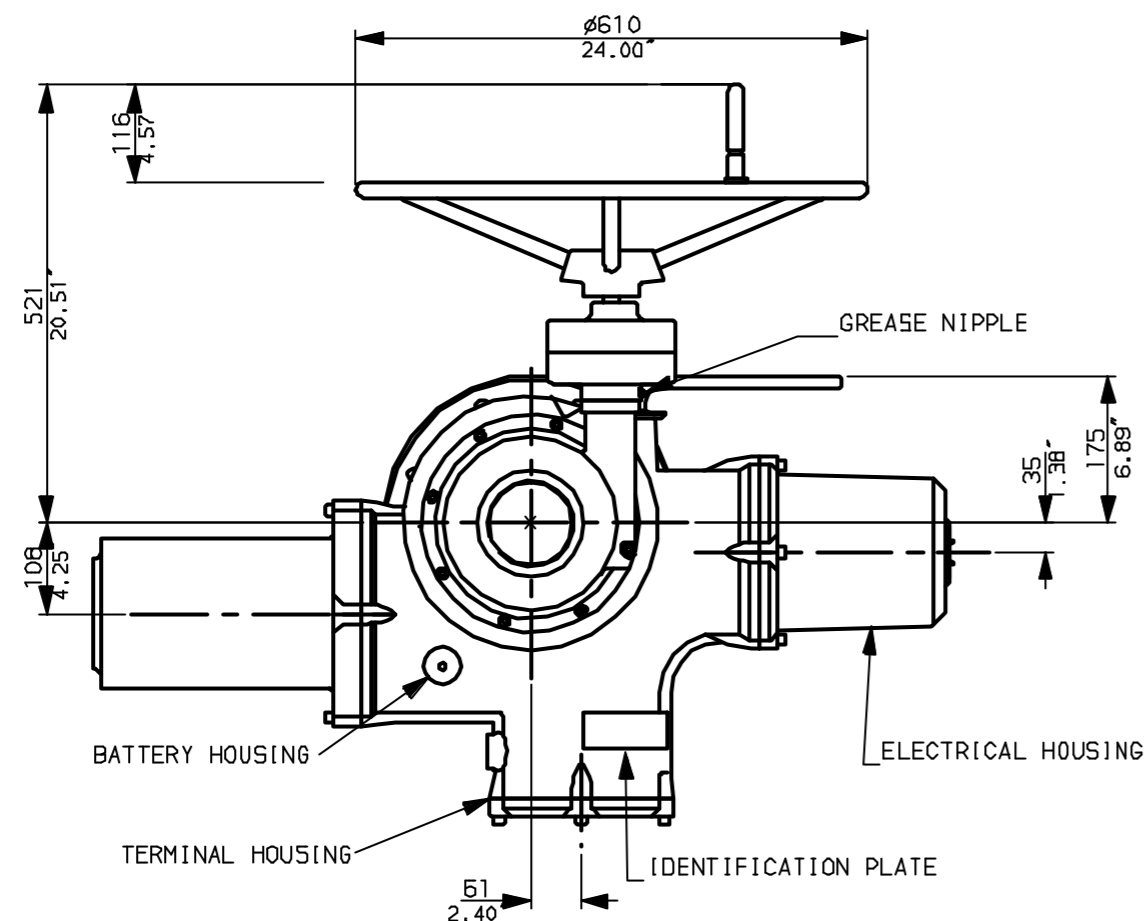
Rotork Controls Ltd.
 Bath England, BA1 3JQ.
 (Phone 01225-733200)
 Rotork Controls Inc.
 Rochester, NY 14624
 (Phone 585-328-1550)

Title IQ70, 90, SHW, IB8,		
STANDARD DIMENSIONAL DATA		
Drawn CAD	Checked PRE	Ref Data Sheet
Date April 04	Job No IQ55HW_IB8	

01	First Issue.
Scale 1:9	THIRD ANGLE PROJECTION
Drawing Number	IQ55HW_IB8

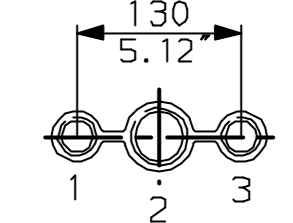
1 | 2 | 3 | 4 | 5 | 6 | 7 | 8 | 9 | 10

G
F
E
D
C
B
A

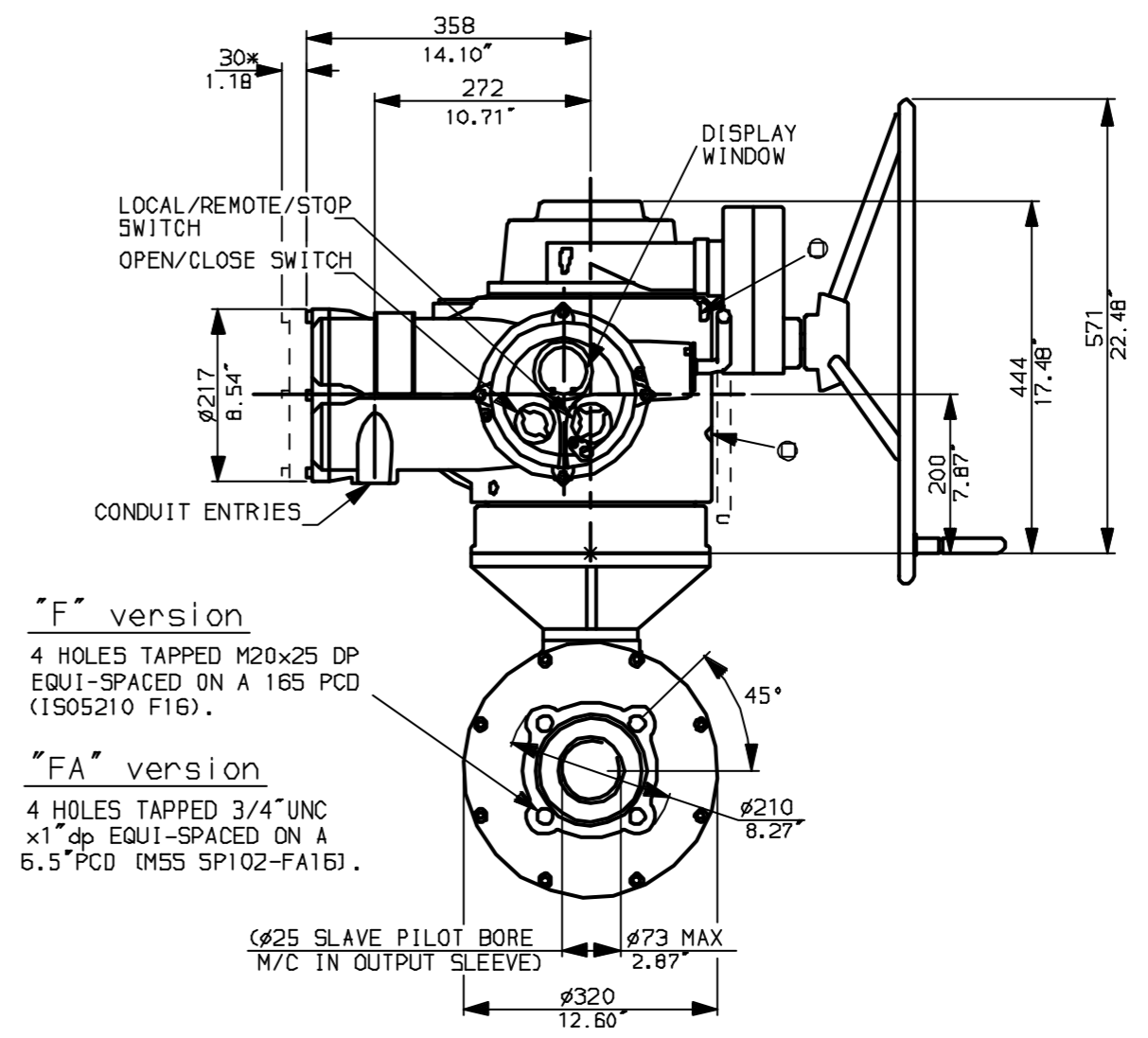


NOTES:
 * DIMENSIONS WITH '*' INDICATE COVER REMOVAL ALLOWANCE
 NETT WEIGHT = 270kg (594 lbs)
 ○ = OIL FILLER/DRAIN PLUG
 THE INTERFACE PROVIDED FOR MOUNTING THE ACTUATOR OR SECOND STAGE GEARBOX ONTO THE VALVE SHOULD CONFORM TO GOOD ENGINEERING PRACTICES, ENSURING ADEQUATELY TOLERANCED LIMITS FOR PARALLELISM, PERPENDICULARITY AND CONCENTRICITY.

CONDUIT ENTRIES (N.T.S)



Nos.1 & 3 TAPPED 1" NPT
 No.2 TAPPED 1 1/2" NPT
 STD ALTERNATIVES IF SPECIFIED
 2 X M25, 1 X M40
 2 X PG16, 1 X PG29



"F" version
 4 HOLES TAPPED M20x25 DP EQUI-SPACED ON A 165 PCD (1905210 F16).
 "FA" version
 4 HOLES TAPPED 3/4" UNC x 1" dp EQUI-SPACED ON A 6.5" PCD (M55 SP102-FA16J).



Rotork Controls Ltd.
 Bath England, BA1 3JQ.
 (Phone 01225-733200)
 Rotork Controls Inc.
 Rochester, NY 14624
 (Phone 585-328-1550)

Title IQ70, 90, SSHW, IB8,
 STANDARD DIMENSIONAL DATA
 Drawn CAD Checked PRE Ref Data Sheet
 Date April 04 Job No IQ5SSHW_IB8

01	First Issue.
Scale	1:9 THIRD ANGLE PROJECTION
Drawing Number	IQ5SSHW_IB8

1 | 2 | 3 | 4 | 5 | 6 | 7 | 8 | 9 | 10