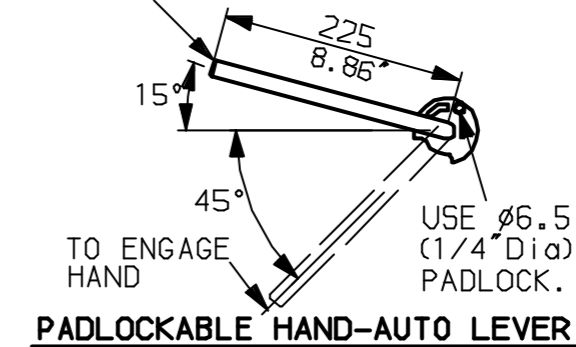



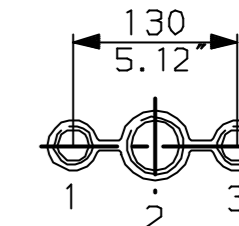
LEVER POSITION IN AUTO.
LEVER AUTOMATICALLY RETURNS
TO THIS POSITION WHEN RELEASED



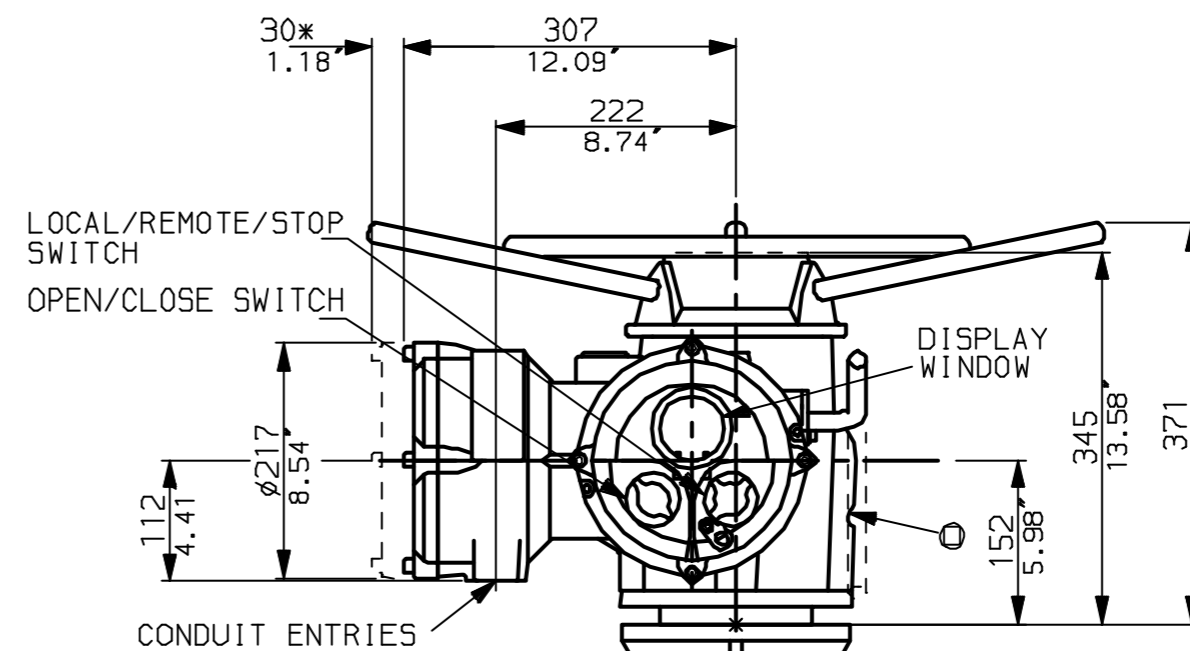
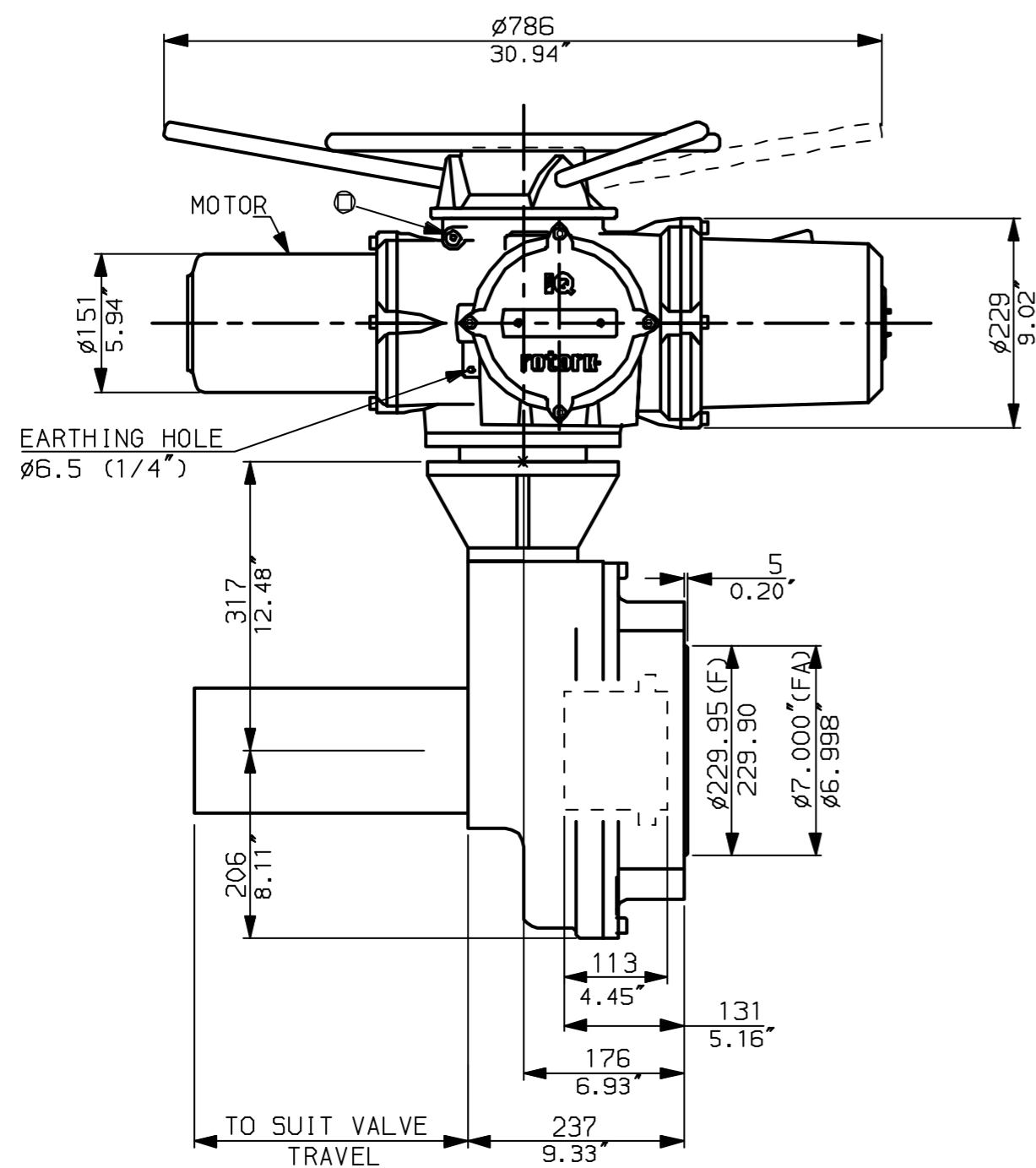
PADLOCKABLE HAND-AUTO LEVER

- NOTES:**
 * DIMENSIONS WITH '*' INDICATE COVER REMOVAL ALLOWANCE
 : NETT WEIGHT = 200kg (440lbs)
 :  = OIL FILLER/DRAIN PLUG
 : THE INTERFACE PROVIDED FOR MOUNTING THE ACTUATOR OR SECOND STAGE GEARBOX ONTO THE VALVE SHOULD CONFORM TO GOOD ENGINEERING PRACTICES, ENSURING ADEQUATELY TOLERANCED LIMITS FOR PARALLELISM, PERPENDICULARITY AND CONCENTRICITY.

CONDUIT ENTRIES (N.T.S)



Nos.1 & 3 TAPPED 1" NPT
 No.2 TAPPED 1 1/2" NPT
 STD ALTERNATIVES IF SPECIFIED
 2 X M25, 1 X M40
 2 X PG16, 1 X PG29

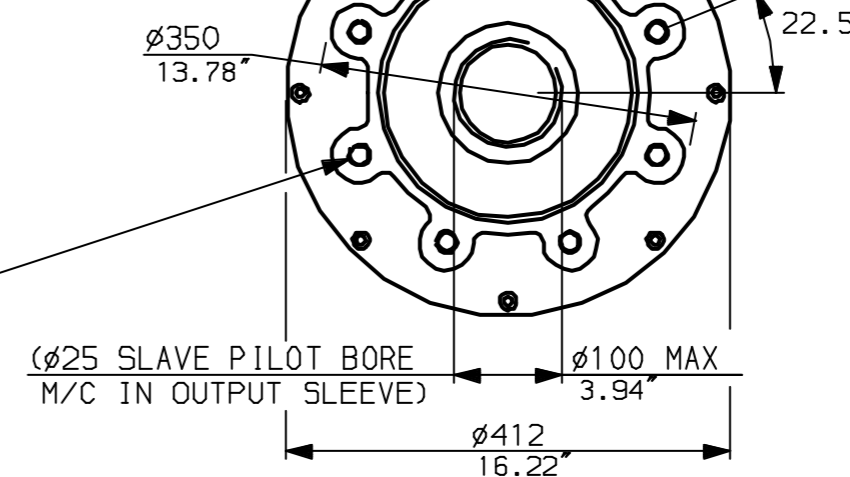


"F" version

8 HOLES TAPPED M20x25 DP
 EQUI-SPACED ON A 298 PCD
 (ISO5210 F30)

"FA" version

8 HOLES TAPPED 3/4" UNC
 x1" dp, EQUI-SPACED ON A
 11.75" PCD (MSS SP102-FA30)

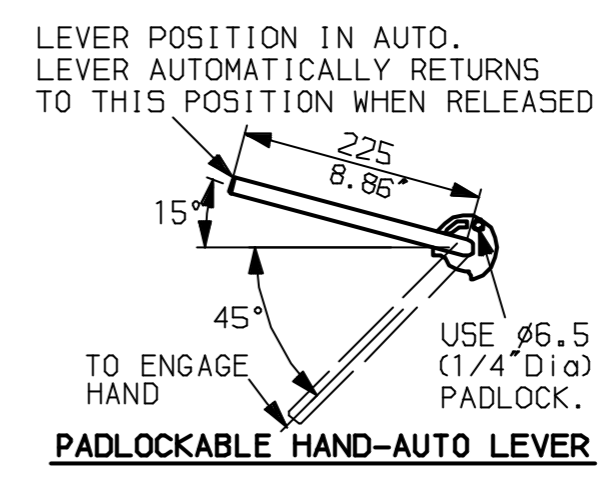
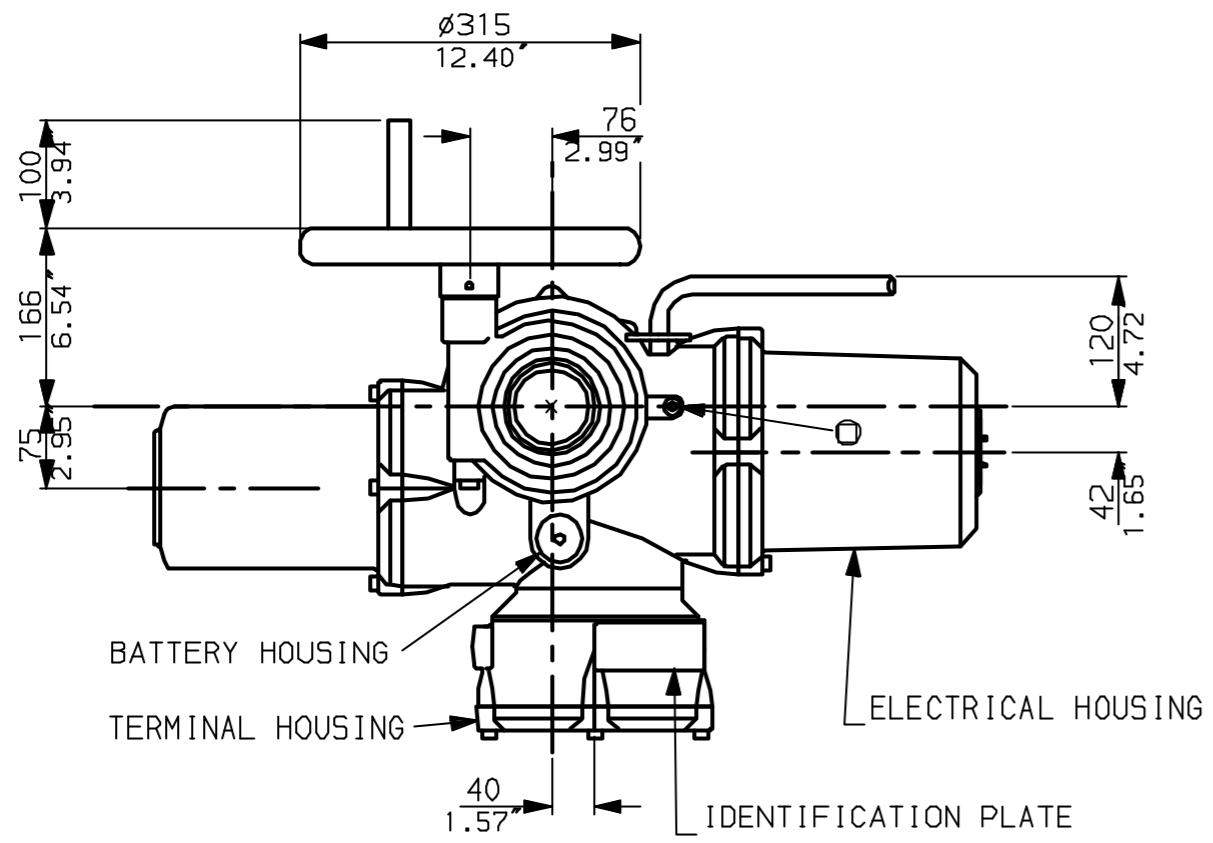


Rotork Controls Ltd.
 Bath England, BA1 3JQ.
 (Phone 01225-733200)
 Rotork Controls Inc.
 Rochester, NY 14624
 (Phone 585-328-1550)

Title IQ35 (+IQM35+IQS35), THW, IB11,		
STANDARD DIMENSIONAL DATA		
Drawn CAD	Checked PRE	Ref Data Sheet
Date April 04	Job No	IQ35THW_IB11

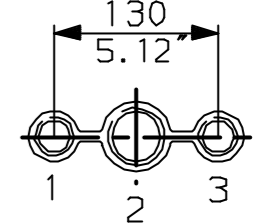
01	First Issue.
Scale	1:7 THIRD ANGLE PROJECTION
Drawing Number	IQ35THW_IB11

G
F
E
D
C
B
A

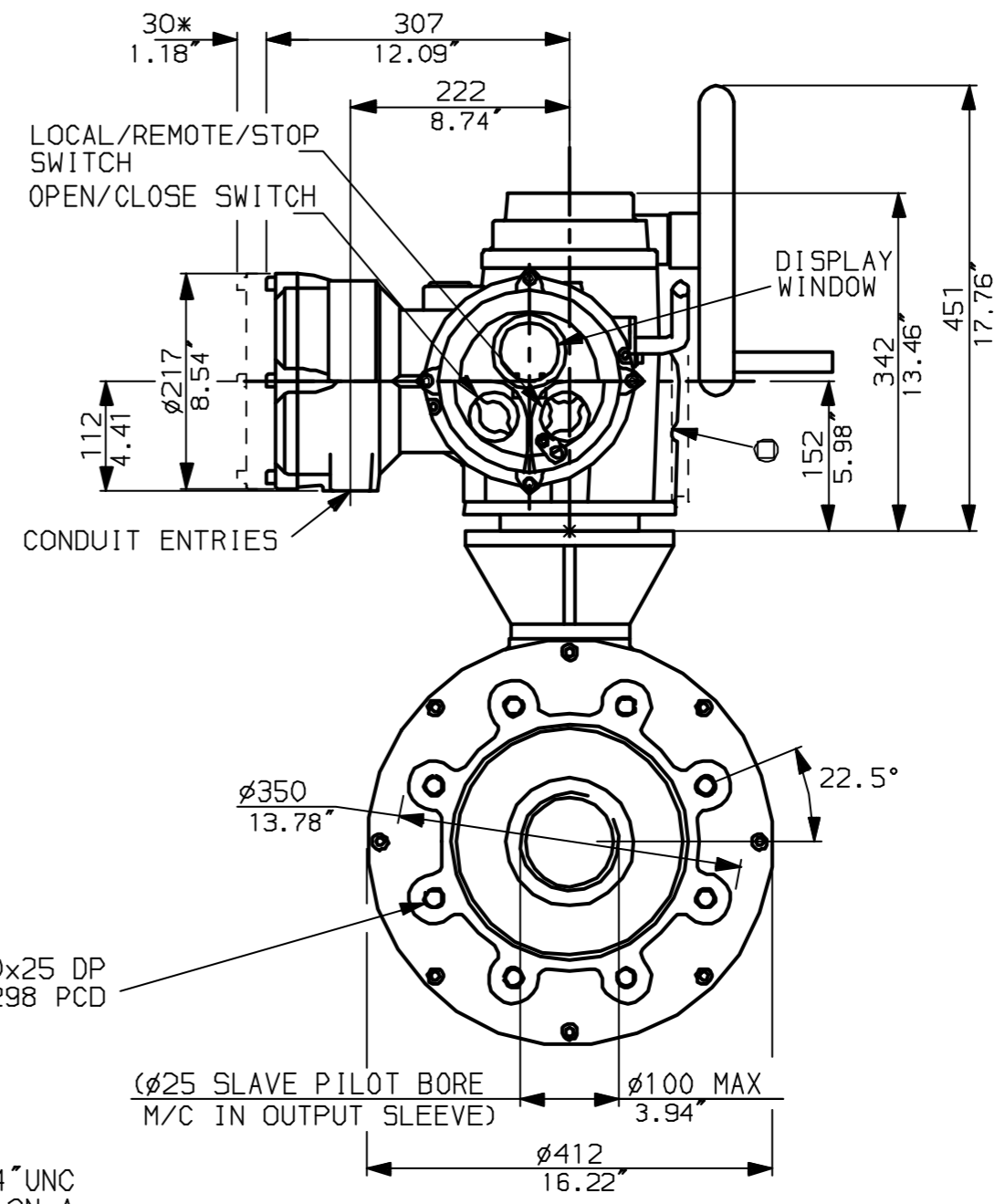
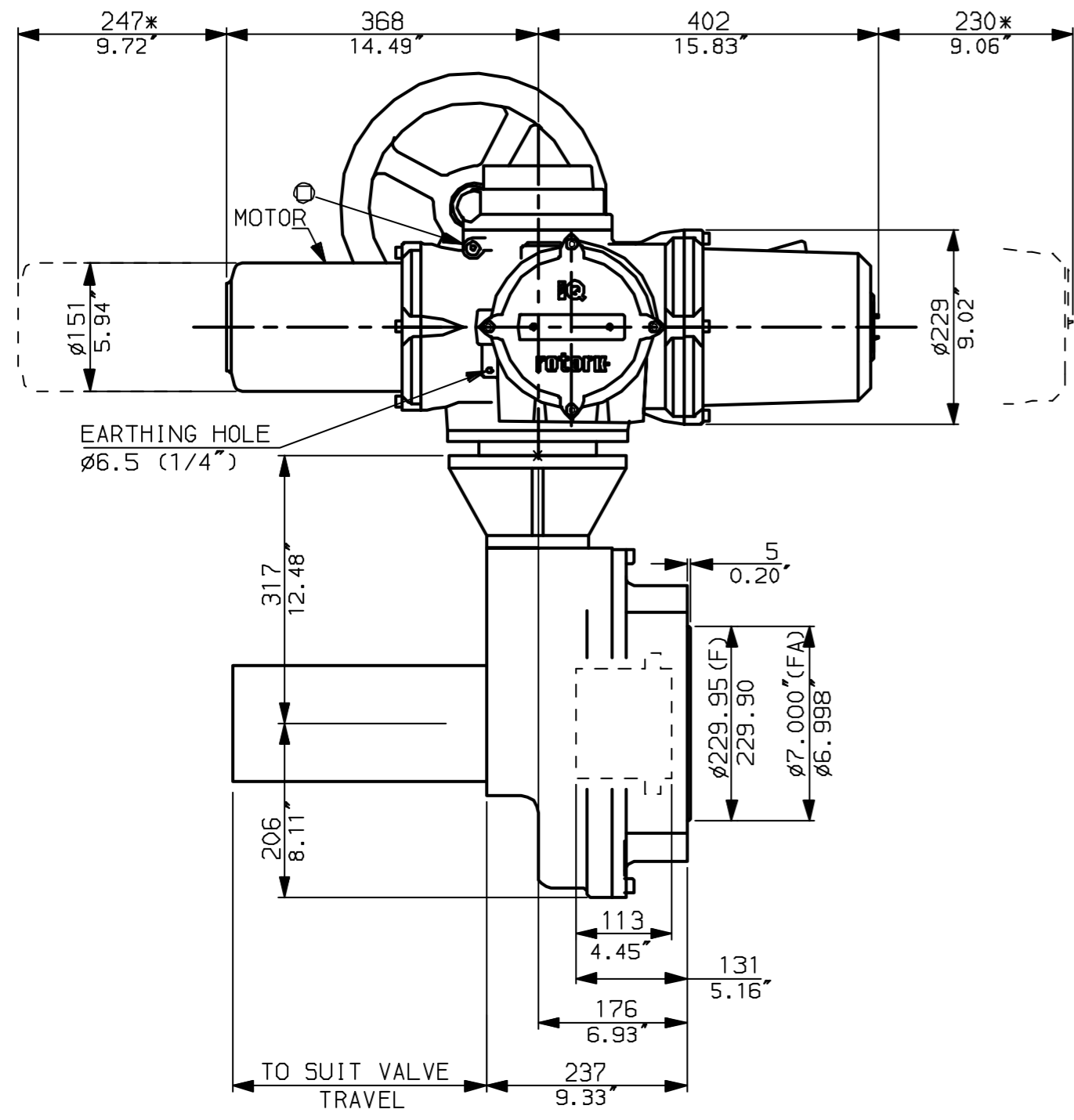


NOTES:
 DIMENSIONS WITH '*' INDICATE COVER REMOVAL ALLOWANCE
 NETT WEIGHT = 200kg (440lbs)
 \odot = OIL FILLER/DRAIN PLUG
 THE INTERFACE PROVIDED FOR MOUNTING THE ACTUATOR OR SECOND STAGE GEARBOX ONTO THE VALVE SHOULD CONFORM TO GOOD ENGINEERING PRACTICES, ENSURING ADEQUATELY TOLERANCED LIMITS FOR PARALLELISM, PERPENDICULARITY AND CONCENTRICITY.

CONDUIT ENTRIES (N.T.S)



Nos.1 & 3 TAPPED 1" NPT
 No.2 TAPPED 1 1/2" NPT
 STD ALTERNATIVES IF SPECIFIED
 2 X M25, 1 X M40
 2 X PG16, 1 X PG29



"F" version
 8 HOLES TAPPED M20x25 DP
 EQUI-SPACED ON A 298 PCD
 (ISO5210 F30)

"FA" version
 8 HOLES TAPPED 3/4" UNC
 x1" dp, EQUI-SPACED ON A
 11.75" PCD (MSS 5P102-FA30)

$\phi 25$ SLAVE PILOT BORE
 M/C IN OUTPUT SLEEVE) $\phi 100$ MAX
 3.94
 $\phi 412$
 16.22



Rotork Controls Ltd.
 Bath England, BA1 3JQ.
 (Phone 01225-733200)
 Rotork Controls Inc.
 Rochester, NY 14624
 (Phone 585-328-1550)

Title IQ35 (+IQM35+IQS35), SHW, IB11,		
STANDARD DIMENSIONAL DATA		
Drawn CAD	Checked PRE	Ref Data Sheet
Date April 04	Job No	IQ35SHW_IB11

01	First Issue.
Scale	1:7 THIRD ANGLE PROJECTION
Drawing Number	IQ35SHW_IB11

1 | 2 | 3 | 4 | 5 | 6 | 7 | 8 | 9 | 10